

**Suppression of metastasis by mirtazapine via restoration of the Lin-7C/ $\beta$ -catenin pathway in human cancer cells**

Katsuhiro Uzawa<sup>1,2</sup>, Atsushi Kasamatsu,<sup>2</sup> Toshihiro Shimizu<sup>1</sup>, Yasuhiro Saito<sup>1</sup>, Takao Baba<sup>1</sup>, Kentaro Sakuma<sup>1</sup>, Kazuaki Fushimi<sup>1</sup>, Yosuke Sakamoto<sup>2</sup>, Katsunori Ogawara<sup>2</sup>, Masashi Shiiba<sup>1,3</sup> and Hideki Tanzawa<sup>1,2</sup>

<sup>1</sup>Department of Clinical Molecular Biology, Graduate School of Medicine, Chiba University, Chiba, Japan; <sup>2</sup>Department of Dentistry-Oral and Maxillofacial Surgery, Chiba University Hospital, Chiba, Japan; and <sup>3</sup>Department of Medical Oncology, Graduate School of Medicine, Chiba University, Chiba, Japan.

Correspondence: Dr Katsuhiro Uzawa, Department of Clinical Molecular Biology, Graduate School of Medicine, Chiba University, 1-8-1 Inohana, Chuo-ku, Chiba 260-8670, Japan.

Phone/fax: +81-43-226-2300; E-mail: uzawak@faculty.chiba-u.jp

## **Supplementary information**

Figure legends

### **Supplementary Figure 1.**

Full-length images of the blots presented in the main figure.

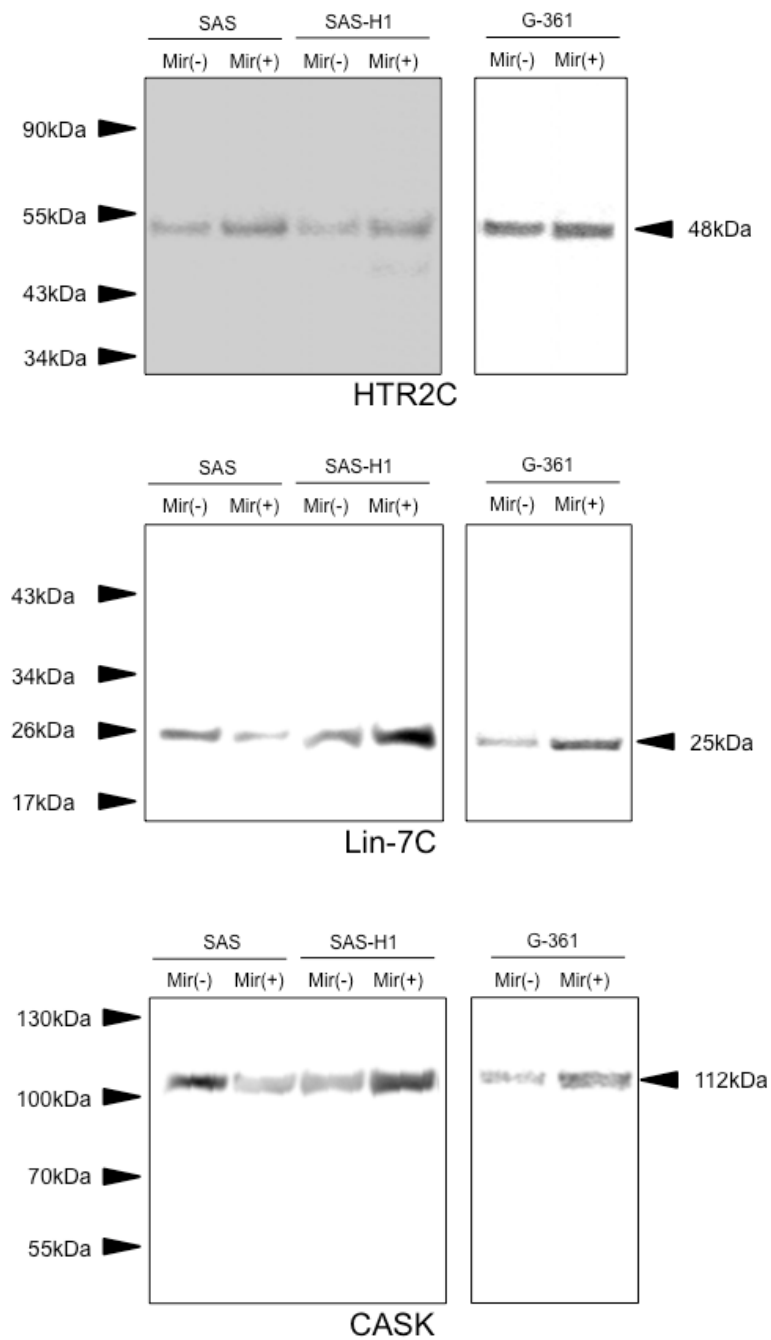
### **Supplementary Figure 2.**

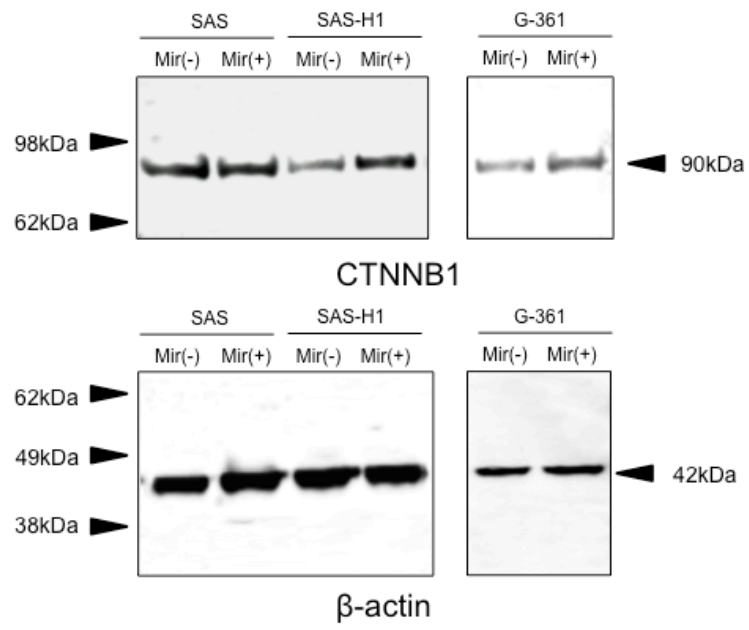
Comparison of the body weights of the no treatment group, the control group (Tween80-treatment) and the mirtazapine-treatment groups. The body weights were measured throughout the 4 weeks of treatment. Values shown represent the mean  $\pm$  SEM (n=5 per group). NT = no mirtazapine treatment.

## Supplementary Figure 1

Full length bolts of Figure 4b

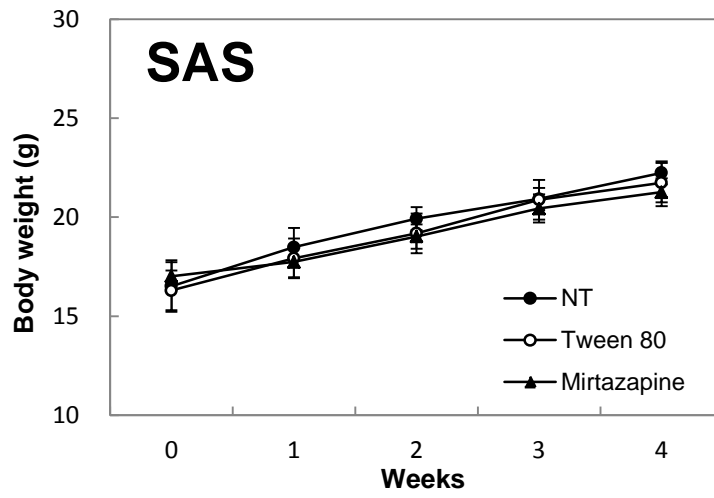
### For Figure 4b



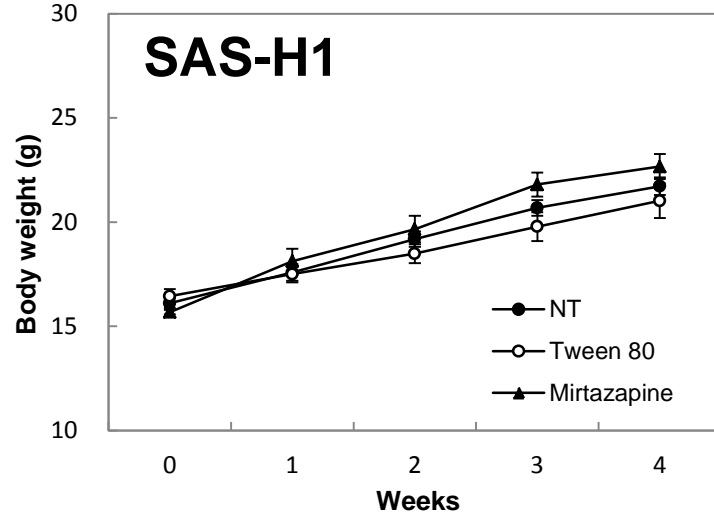


Supplementary Figure 2

(a)



(b)



(c)

