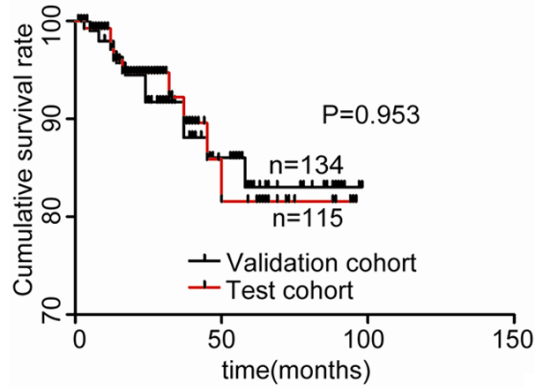


Rictor is a prognostic factor for endometrial carcinoma



Supplementary Figure 1. Comparisons of OS between in the test and validation cohorts. (P=0.953).

Supplementary Table 1. Background disposition and clinical characteristics of endometrial cancer in test and validation cohort

	No. (%)		P value
	Test cohort (n=134)	Validation cohort (n=115)	
Pregnancy			
No	7 (5.2%)	6 (5.2%)	0.998
Yes	127 (94.8%)	109 (94.8%)	
Pathological type			
Adenocarcinoma	121 (90.3%)	102 (88.7%)	0.680
Squamous carcinoma, papillary serous carcinoma, clear cell carcinoma	13 (9.7%)	13 (11.3%)	
Stage			
I	115 (85.8%)	100 (87%)	0.789
II	11 (8.2%)	9 (7.8%)	
III, IV	8 (6%)	6 (5.2%)	
Grade			
G1	77 (57.5%)	69 (60%)	0.776
G2	42 (31.3%)	32 (27.8%)	
G3	15 (11.2%)	14 (12.2%)	
Vascular invasion			
No	126 (94%)	109 (94.8%)	0.797
Yes	8 (6%)	6 (5.2%)	
Lymphatic metastasis			
No	127 (94.8%)	110 (95.7%)	0.748
Yes	7 (5.2%)	5 (4.3%)	
RICTOR			
No	75 (56%)	65 (56.5%)	0.930
Yes	59 (44%)	50 (43.5%)	