

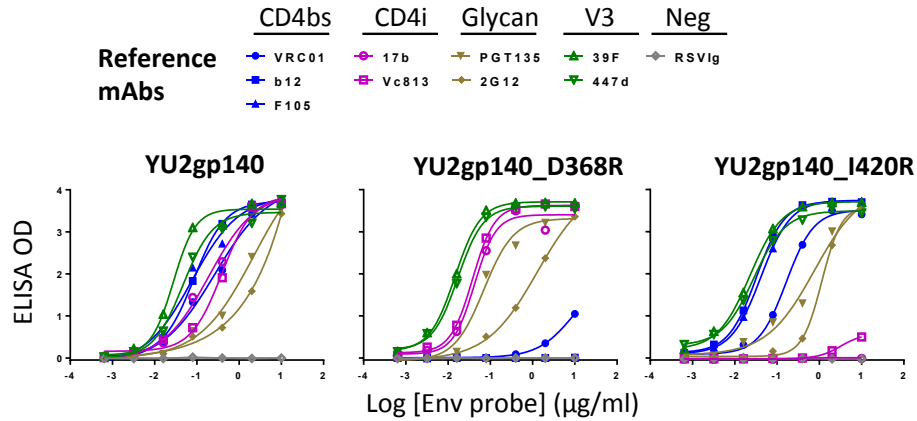
**Supplemental Table 1.** Gene array comparison of gp140-specific B cells with strong versus weak pro-resting memory profiles

Category	Gene names	Fold change	FDR <sup>B</sup>	p-value
Inhibitory Receptors	FCRL4	<b>-3.05<sup>A</sup></b>	<b>0.064</b>	<b>2.60E-02</b>
	SIGLEC6	<b>-3.20</b>	<b>0.020</b>	<b>4.33E-03</b>
	FCGR2B	<b>-3.91</b>	<b>0.020</b>	<b>2.16E-03</b>
	LILRB1	<b>-2.97</b>	<b>0.064</b>	<b>2.60E-02</b>
	LILRB2	<b>-4.61</b>	<b>0.031</b>	<b>8.66E-03</b>
	CD72	<b>-3.38</b>	<b>0.031</b>	<b>8.66E-03</b>
	LAIR1	-0.04	0.725	5.89E-01
	CD84	<b>-3.72</b>	<b>0.020</b>	<b>4.33E-03</b>
	PTGER4	1.10	0.274	1.80E-01
Cell Activation	SLAMF7	-1.99	0.115	6.49E-02
Trafficking	ITGAX	<b>-4.71</b>	<b>0.020</b>	<b>2.16E-03</b>
	SELL	1.24	0.274	1.80E-01
	CCR7	-1.01	0.525	3.94E-01
Cytokine Receptors	IL13RA1	-1.34	0.525	3.78E-01
	IL4R	-1.47	0.349	2.40E-01
Tyrosine Kinases & Phosphatases	HCK	<b>-4.68</b>	<b>0.020</b>	<b>2.16E-03</b>
	LCK	2.19	0.115	6.49E-02
	FGR	<b>-3.03</b>	<b>0.048</b>	<b>1.52E-02</b>
	FYN	<b>-2.87</b>	<b>0.064</b>	<b>2.60E-02</b>
	PTPN22	-2.26	0.115	6.49E-02
	DUSP4	0.69	0.903	8.18E-01
Somatic Hypermutation	AICDA	<b>-3.55</b>	<b>0.020</b>	<b>4.33E-03</b>
Transcription Factors	PBX3	-1.93	0.115	6.49E-02
	SOX5	<b>-2.74</b>	<b>0.094</b>	<b>4.11E-02</b>
	BCL11B	<b>-3.83</b>	<b>0.020</b>	<b>4.33E-03</b>
Cell Cycle	CCNB2	-0.47	0.725	5.89E-01
Cell-cell Signaling	SEMA4A	-0.08	1.000	1.00E+00
Apoptosis	TNFRSF1B	-1.85	0.157	9.31E-02
Cell Energy	LAX1	-0.39	0.799	6.99E-01

<sup>A</sup>Bold numbers indicate a statistical significant difference in gene expression

<sup>B</sup>Wilcoxon test followed by Benjamini-Hochberg FDR calculation

## Supplemental Figure 1

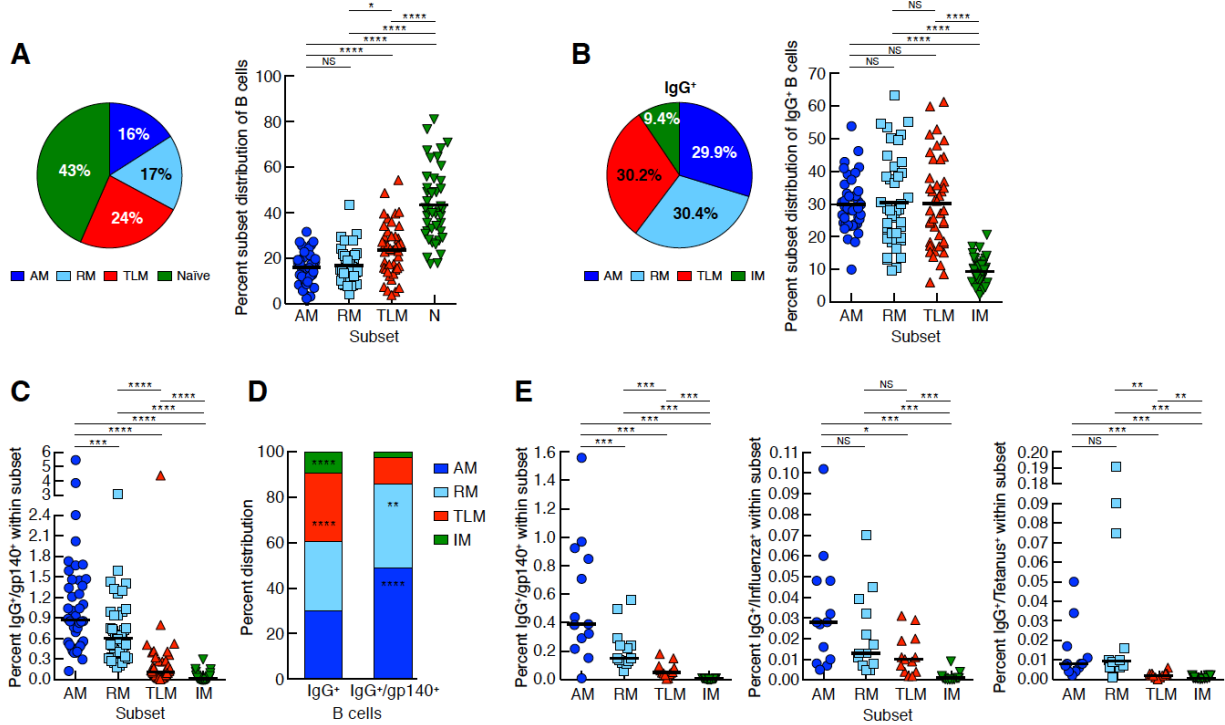


	Binding of YU2gp140FT-Biotin Probes to Selected Antibodies									
	CD4bs			CD4i		V3		Glycan		Neg. Control
	VRC01	b12	F105	17b	Vc813	39F	447d	PGT135	2G12	RSVlg
YU2gp140FT WT	+++	++++	++++	+++	+++	++++	++++	+++	+++	-
YU2gp140FT D368R	+	-	-	++++	++++	++++	++++	++++	+++	-
YU2gp140FT I420R	+++	++++	++++	-	+	++++	++++	+++	+++	-

Relative binding of probes was based on the OD<sub>450</sub> values at the highest concentration of protein (10 µg/ml), and EC<sub>50</sub> values:  
 OD<sub>450</sub> ≥ 3.0 and EC<sub>50</sub> ≤ 0.10 = +++; OD<sub>450</sub> ≥ 3.0 and EC<sub>50</sub> > 0.10 = ++; 1.0 ≤ OD<sub>450</sub> < 3.0 = +; 0.2 ≤ OD<sub>450</sub> < 1.0 = +; OD<sub>450</sub> < 0.2 = -

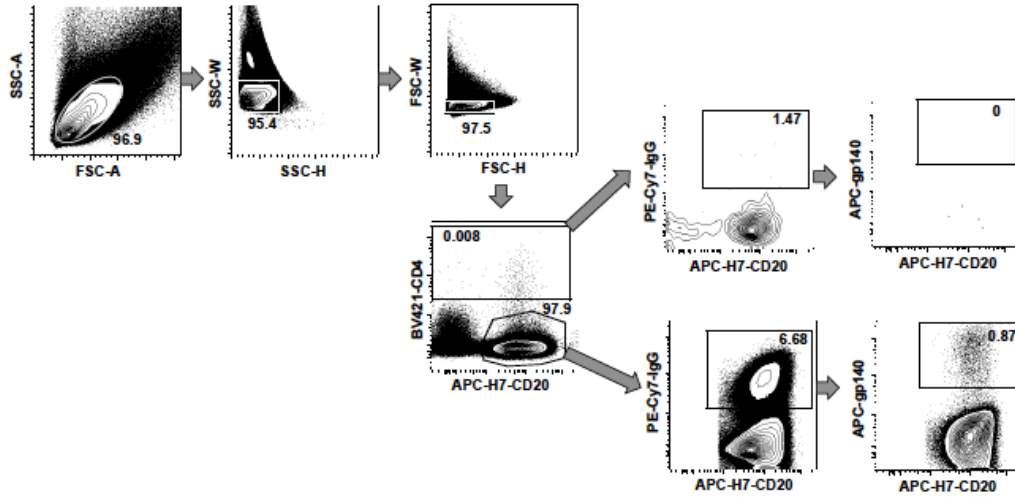
Validation of specificity of YU2-biotin probes by ELISA. ELISA (96-well) plates were coated with 100 µl of HIV-1 Env –specific reference mAbs at 2 µg/ml, followed by addition of five-fold serial dilutions of biotin-labeled YU2gp140 and derivative probes, starting at 10 µg/ml. Bound probe was detected with streptavidin-HRP conjugate (Sigma) and TMB substrate (Invitrogen). Reference mAbs included CD4bs-, CD4-induced (CD4i)-, glycan-, and V3-specific mAbs. The non-HIV mAb RSVlg was used as negative (Neg) control.

### Supplemental Figure 2



Frequencies of total, IgG<sup>+</sup>, IgG<sup>+</sup>/gp140<sup>+</sup>, IgG<sup>+</sup>/influenza<sup>+</sup> and IgG<sup>+</sup>/tetanus<sup>+</sup> B-cell subsets. Mature (CD10<sup>-</sup>) B cells isolated from the peripheral blood of HIV-infected untreated individuals and stained for CD3, CD20, IgG, CD21, CD27 and probes for gp140, influenza and tetanus. Gates were set on (A) CD20<sup>+</sup> and (B) IgG<sup>+</sup> B cells, followed by determination of the distribution of each subset using markers CD21 and CD27. Pie chart analysis of CD20<sup>+</sup> and IgG<sup>+</sup> B cells by subset and comparison between subsets are shown for the same 42 HIV-viremic individuals as in Figure 3. (C) Comparison between B-cell subsets of gp140-binding within each subset for the same 42 HIV-viremic individuals. (D) Comparison of mean percent distribution among subsets between IgG<sup>+</sup> and IgG<sup>+</sup>/gp140<sup>+</sup> B cells. (E) Comparison between B-cell subsets of gp140-, influenza- or tetanus-binding within each subset for the same 12 HIV-viremic individuals shown in Figure 5. Horizontal bars show mean (A, B) and median (C, E) values and asterisk are for following p-values: \* < 0.05; \*\* < 0.01; \*\*\* < 0.001; \*\*\*\* < 0.0001.

Supplemental Figure 3



Purity of B cells and absence of CD4-mediated binding to gp140 among IgG<sup>+</sup> B cells. Mature (CD10<sup>-</sup>) B cells isolated from the peripheral blood of a representative HIV-infected individual were stained for CD4, CD20, IgG and the gp140-WT probe. Live cells and singlets were established by forward (FSC) and side (SSC) scatter gating, followed by gating on CD4<sup>+</sup> and CD20<sup>+</sup> cells and determination of percent gp140 binding among IgG/CD20-expressing cells from each gate.