

Supplemental Materials

Molecular Biology of the Cell

Xu et al.

Supplemental Materials

Figure S1. Expression of wild-type and mutant CPL-1 tagged with mChOint in germline sheath cells and hypodermis. Representative DIC and fluorescence images are shown for *yqEx688* (CPL-1, WT), *yqEx690* (CPL-1, del51), *yqEx743* (CPL-1, C144A) and *yqEx746* (CPL-1, G230R). Bars, 10 μm .

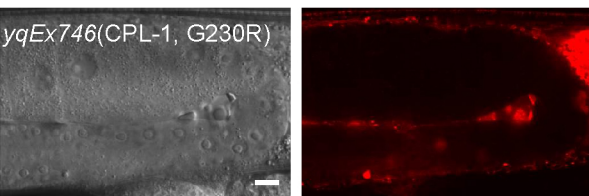
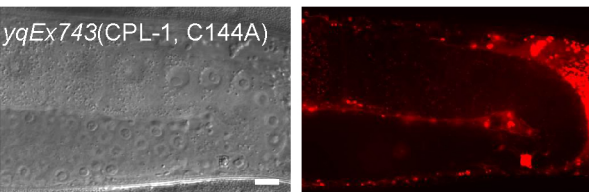
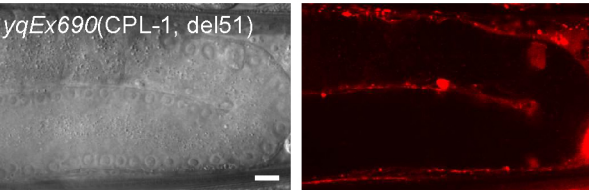
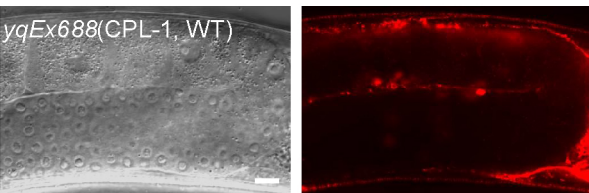
Figure S2. qRT-PCR evaluation of RNAi effect on mRNAs of some lysosomal cathepsins. 12 cathepsins as indicated were randomly chosen for examination of mRNA levels after RNAi treatment. qRT-PCR was performed by using mRNAs isolated from RNAi-treated animals that were also scored for germ cell corpses. Data were derived from three repeats. Comparisons were performed between control RNAi (Ctrl RNAi) and individual cathepsin RNAi (cathepsin RNAi) using unpaired *t*-test. ** $p < 0.01$. *** $p < 0.001$.

Figure S1

Germline sheath cells

DIC

CPL-1::mChOint



Hypodermis

DIC

CPL-1::mChOint

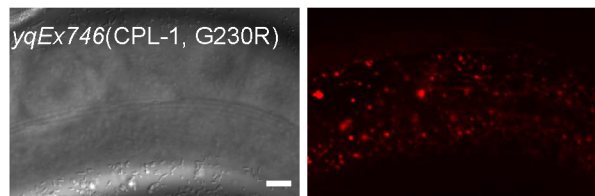
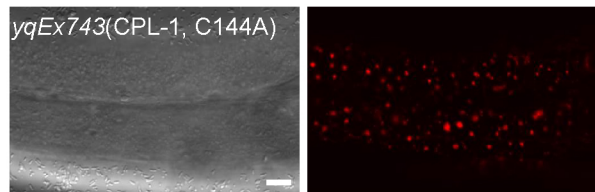
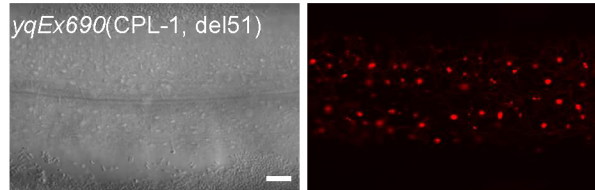
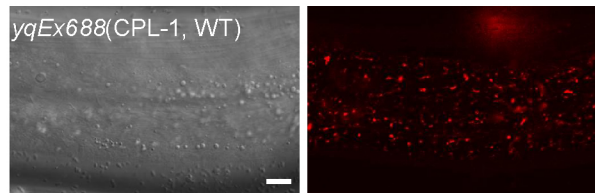


Figure S2

