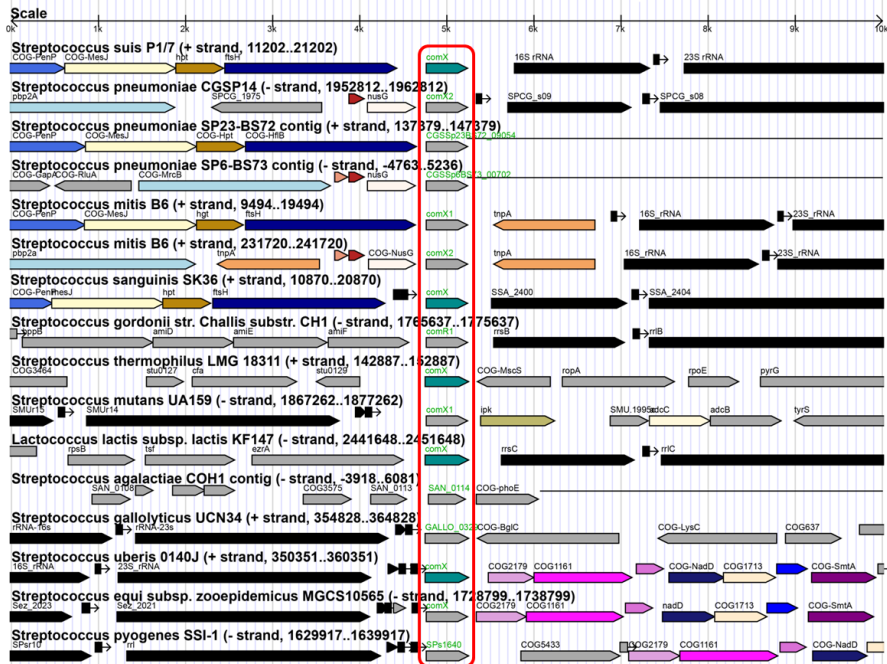


A



B



Figure 1. A) Overview of the *comX* region in the genome of different streptococcal species. The *comX* sequences have a sequence identity greater than 37%. Orthologous genes are represented with the same colors if amino acid identity was greater than 50%. B). Overview of the *comRS* locus in *S. suis* and in other representative streptococcal species. The *comR* sequences have a sequence identity greater 37%. Orthologous genes are represented with the same colors if amino acid identity was greater than 50%. (Red box): *comR* genes, (black boxes): conserved genes surrounding *comR*.