

FOR ONLINE SUPPLEMENT

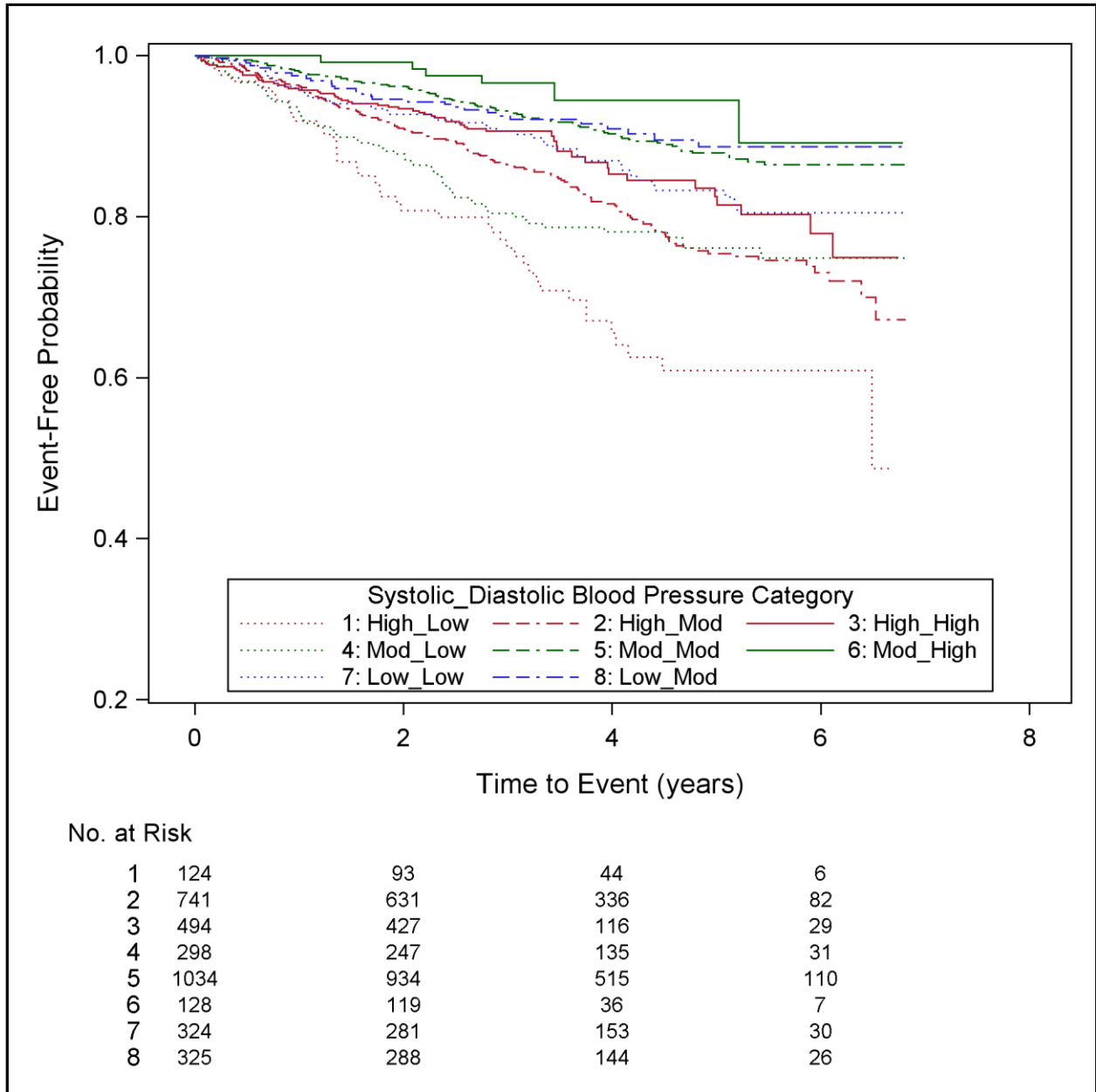
Supplemental Table 1. Extended multivariable models for cardiovascular disease, mortality, and composite outcomes

	CVD		Mortality		Composite	
	Hazard Ratio (95% CI)	P- value	Hazard Ratio (95% CI)	P- value	Hazard Ratio (95% CI)	P- value
Systolic BP (mmHg)						
<110	0.74 (0.45-1.21)	0.23	0.48 (0.26-0.89)	0.019	0.65 (0.42-0.99)	0.045
110-119	1.18 (0.83-1.67)	0.35	0.98 (0.66-1.43)	0.90	1.14 (0.86-1.52)	0.37
120-129	reference	---	reference	---	reference	---
130-139	1.24 (0.91-1.68)	0.17	1.15 (0.84-1.57)	0.39	1.15 (0.89-1.47)	0.29
140-149	1.43 (1.05-1.93)	0.022	1.15 (0.83-1.58)	0.40	1.28 (0.99-1.65)	0.059
150-159	1.54 (1.09-2.18)	0.015	1.09 (0.75-1.59)	0.66	1.26 (0.94-1.69)	0.13
160+	2.15 (1.54-2.99)	<0.001	1.13 (0.77-1.63)	0.54	1.67 (1.26-2.23)	<0.001
Diastolic BP (mmHg)						
<60	1.50 (1.02-2.22)	0.040	1.41 (0.91-2.18)	0.13	1.36 (0.97-1.92)	0.074
60-69	1.40 (1.08-1.81)	0.010	1.34 (1.01-1.77)	0.039	1.40 (1.13-1.74)	0.002
70-79	reference	---	reference	---	reference	---
80-89	1.04 (0.81-1.32)	0.77	0.91 (0.70-1.20)	0.51	1.00 (0.81-1.23)	0.97
90-99	0.95 (0.67-1.35)	0.77	1.07 (0.73-1.55)	0.74	1.03 (0.77-1.39)	0.82
100+	0.94 (0.52-1.70)	0.85	0.99 (0.51-1.94)	0.98	0.86 (0.51-1.45)	0.57
Age (per 5 yr)	1.10 (1.05-1.16)	<0.001	1.23 (1.16-1.30)	<0.001	1.15 (1.10-1.20)	<0.001
Female sex	0.88 (0.72-1.09)	0.24	1.06 (0.85-1.33)	0.60	0.94 (0.79-1.12)	0.52
Race						
Black	0.80 (0.62-1.04)	0.091	1.07 (0.82-1.40)	0.64	0.87 (0.70-1.08)	0.21
Other	0.90 (0.61-1.34)	0.61	0.96 (0.63-1.47)	0.85	1.13 (0.83-1.54)	0.45
Country						
Canada	0.79 (0.58-1.08)	0.14	0.65 (0.46-0.93)	0.018	0.72 (0.56-0.94)	0.017
Brazil	0.73 (0.51-1.06)	0.096	1.17 (0.78-1.75)	0.46	0.80 (0.58-1.09)	0.15
Low dose vitamin	0.95 (0.80-1.14)	0.61	0.99 (0.82-1.21)	0.95	0.95 (0.81-1.11)	0.50
History of CVD	2.13 (1.76-2.59)	<0.001	1.47 (1.18-1.83)	<0.001	1.79 (1.51-2.12)	<0.001
History of diabetes	2.34 (1.92-2.85)	<0.001	1.85 (1.49-2.29)	<0.001	2.04 (1.72-2.40)	<0.001
Smoking status						
Current	1.41 (1.06-1.88)	0.019	1.73 (1.27-2.36)	<0.001	1.50 (1.17-1.92)	0.001
Former	1.10 (0.90-1.33)	0.35	1.33 (1.06-1.65)	0.012	1.22 (1.03-1.45)	0.019
LDL cholesterol (per 10 mg/dL)	1.01 (0.98-1.04)	0.44	1.00 (0.97-1.03)	0.85	1.01 (0.99-1.04)	0.21
HDL cholesterol (per 10 mg/dL)	0.93 (0.86-1.00)	0.050	0.94 (0.86-1.02)	0.14	0.90 (0.85-0.96)	0.003
Triglycerides (per 50 mg/dL)	1.00 (0.98-1.02)	0.96	1.01 (0.99-1.02)	0.49	1.00 (0.99-1.01)	0.93
Albumin Creatinine Ratio (Ln mg/g)	1.09 (1.03-1.15)	0.002	1.22 (1.15-1.29)	<0.001	1.12 (1.07-1.17)	<0.001
Body mass index	0.89 (0.82-0.97)	0.006	0.92 (0.84-1.00)	0.054	0.89 (0.82-0.95)	<0.001

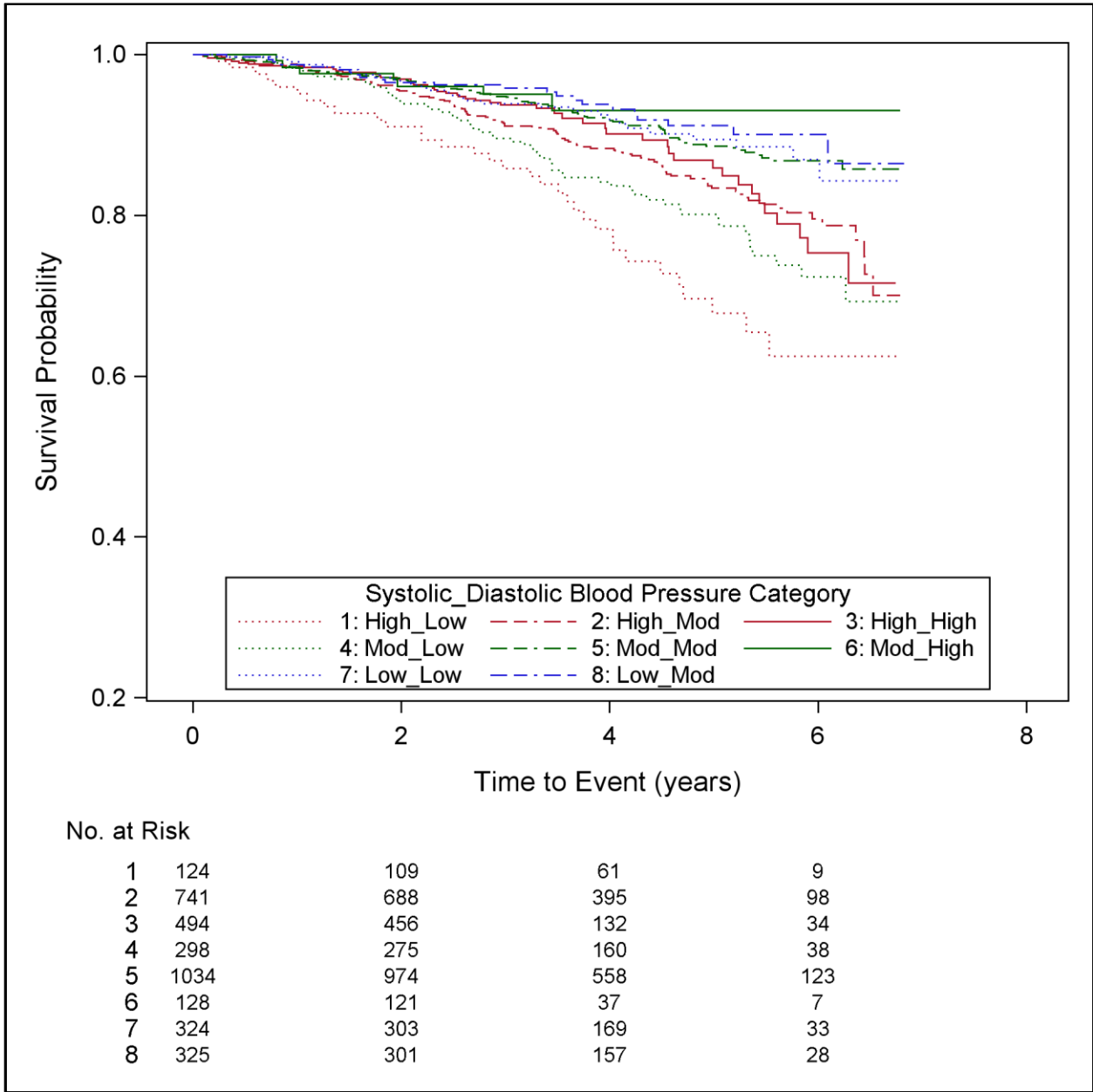
eGFR (10 unit change for eGFR<45 mL/min per 1.73 m²)	0.88 (0.83-0.94)	<0.001	0.87 (0.81-0.93)	<0.001	0.90 (0.85-0.95)	<0.001
eGFR (10 unit change for eGFR≥45 mL/min per 1.73 m²)	1.00 (0.96-1.04)	0.96	1.00 (0.96-1.05)	0.86	0.99 (0.95-1.03)	0.63
Transplant vintage	1.01 (0.99-1.03)	0.18	1.02 (1.00-1.04)	0.085	1.02 (1.00-1.03)	0.011
Living donor	0.84 (0.69-1.01)	0.067	0.63 (0.50-0.79)	<0.001	0.78 (0.66-0.92)	0.004
ACE Inhibitor Use	0.97 (0.80-1.18)	0.77	0.96 (0.77-1.19)	0.68	0.94 (0.80-1.12)	0.50
Angiotensin Receptor Blocker Use	0.97 (0.75-1.25)	0.80	0.82 (0.61-1.11)	0.19	0.94 (0.76-1.18)	0.61
Beta Blocker Use	1.05 (0.86-1.27)	0.65	0.86 (0.69-1.06)	0.15	0.98 (0.83-1.16)	0.85
Dihydropyridine CA Channel Blocker Use	0.99 (0.82-1.20)	0.90	1.00 (0.81-1.24)	0.97	0.97 (0.82-1.15)	0.73
Non-Dihydropyridine CA Channel Blocker Use	1.12 (0.80-1.58)	0.51	1.19 (0.81-1.74)	0.37	1.26 (0.95-1.68)	0.11
Loop Diuretic Use	1.18 (0.97-1.44)	0.10	1.39 (1.12-1.72)	0.003	1.21 (1.02-1.44)	0.025
Other Diuretic Use	1.41 (1.08-1.84)	0.012	1.07 (0.78-1.47)	0.69	1.24 (0.98-1.57)	0.078

Supplemental Figure 1. Kaplan-Meier survival curves for (a) cardiovascular disease outcomes, (b) all-cause mortality, and (c) composite of CVD or all-cause mortality

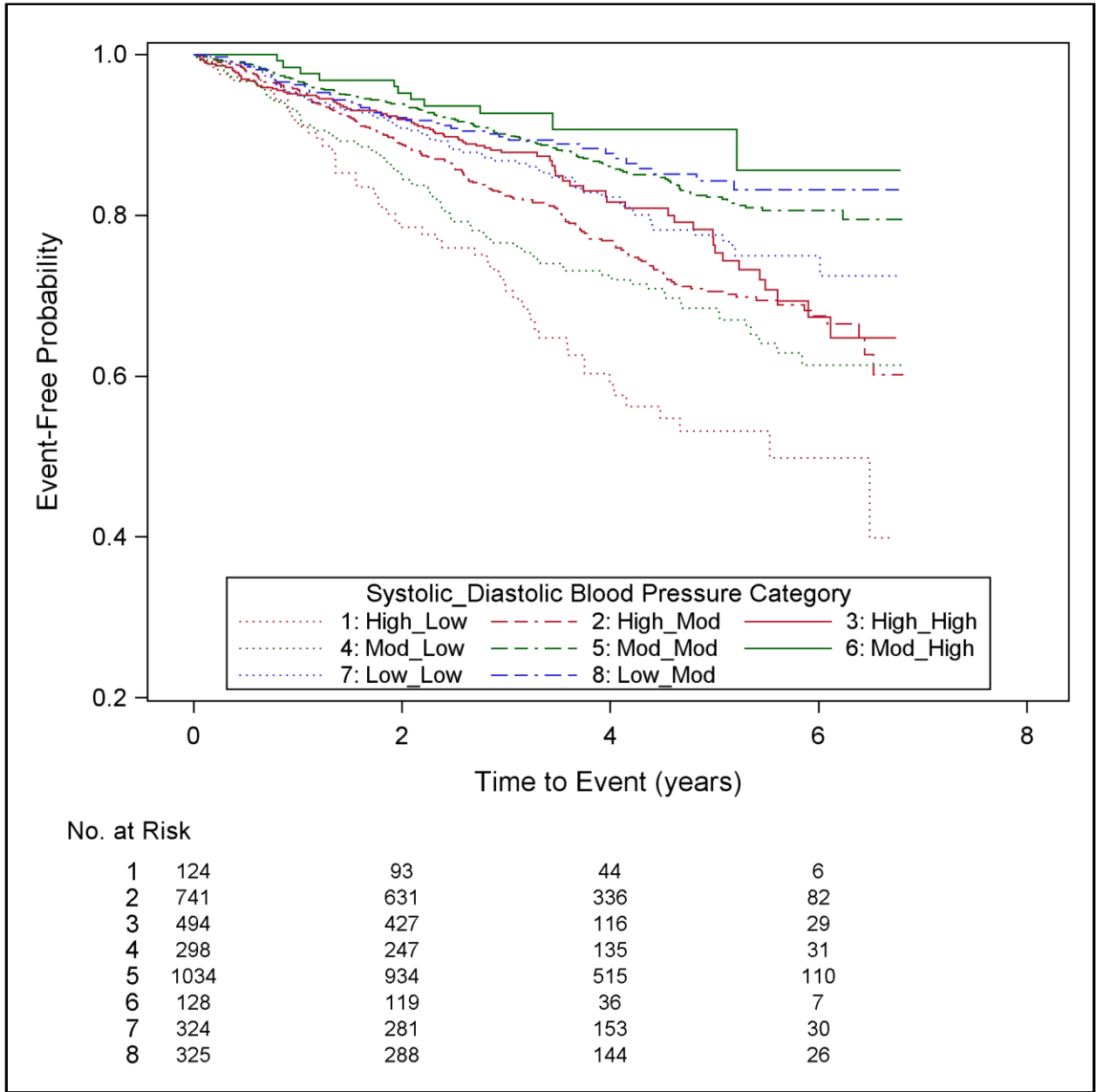
(a) Cardiovascular disease



(b) All-cause mortality



(c) Composite of CVD and all-cause mortality



*Blood pressure categories

Systolic BP	Diastolic BP
Low: < 120 mmHg	Low: < 70 mmHg
Moderate: 120 – 139 mmHg	Moderate: 70 – 89 mmHg
High: ≥ 140 mmHg	High: ≥ 90 mmHg