

Figure-S1: Representative sort gates and purities for B cell subsets.

- (A) Dot plots showing B cell subsets prior to cell sorting (CD19 gate)
- (B) Post-sort purity of CD19+ cells (lymphocyte gate)
- (C) Post-sort purities of B cell subsets (CD19 gate)

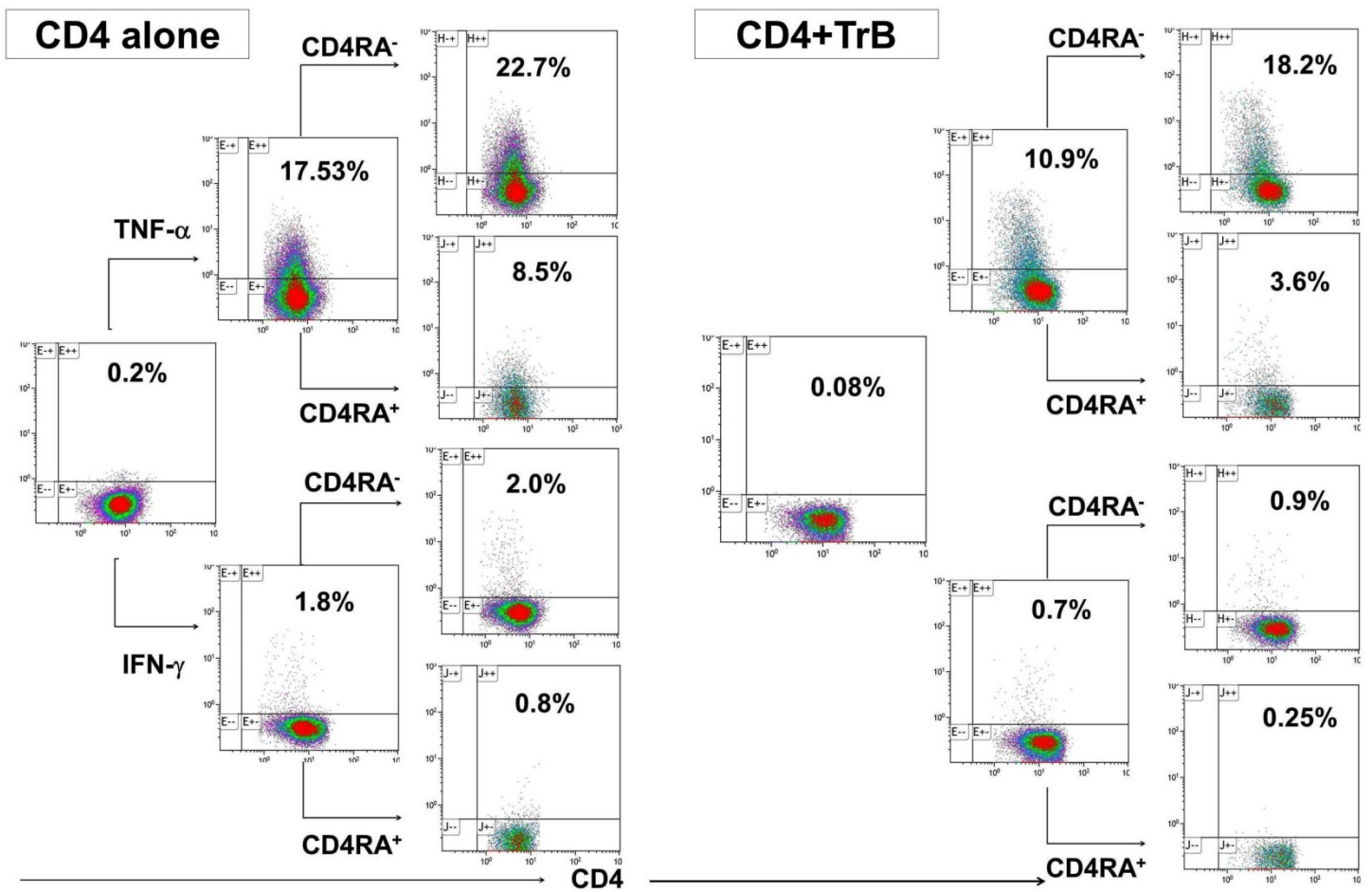


Figure-S2: Effect of TrB on CD45RA⁺ and CD45RA⁻ CD4 Tconv cells

Representative scatter plot showing the expression of TNF- α and IFN- γ by CD45RA⁺ and CD45RA⁻ Tconv when stimulated for 72hrs by plate bound anti human CD3 when cultured alone or in the presence of autologous TrB (n=3).

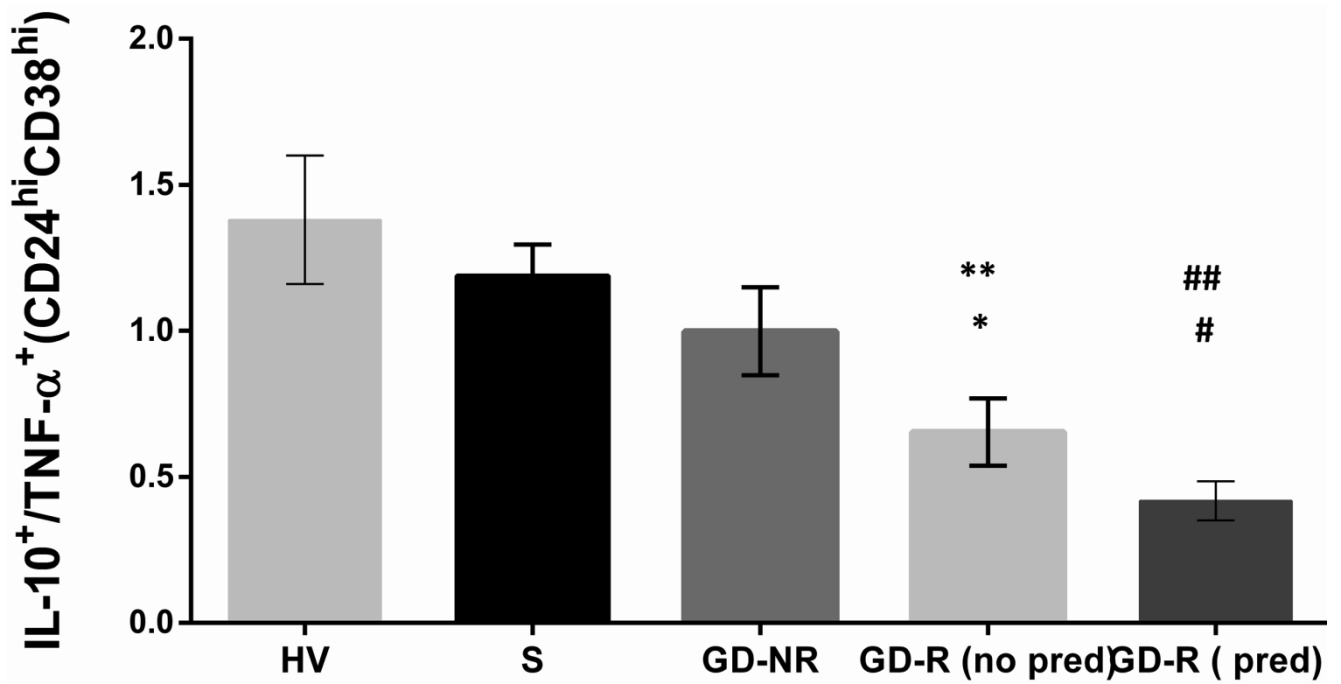


Figure-S3: IL-10/TNF- α ratio for TRB cells patient groups-influence of maintenance corticosteroids

Pred- maintenance corticosteroids, no pred- no maintenance corticosteroids

*S vs. GD-R (no pred), P=0.02; **S vs. GD-R (pred), P=0.0002; #GD-NR vs. GD-R (no pred), P=0.1;

##GD-NR vs. GD-R (pred), P=0.008

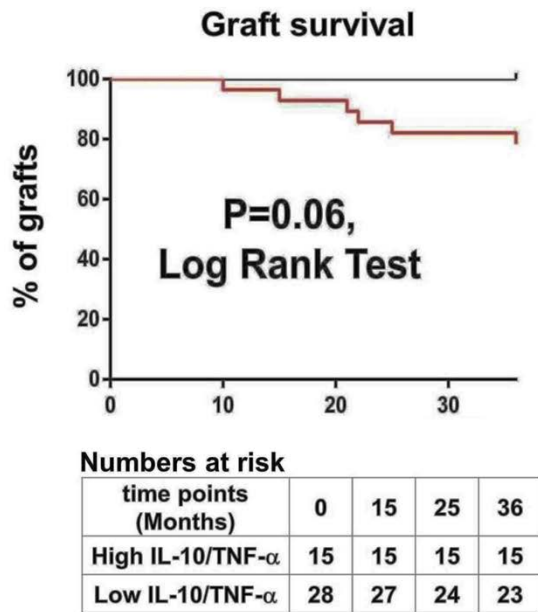
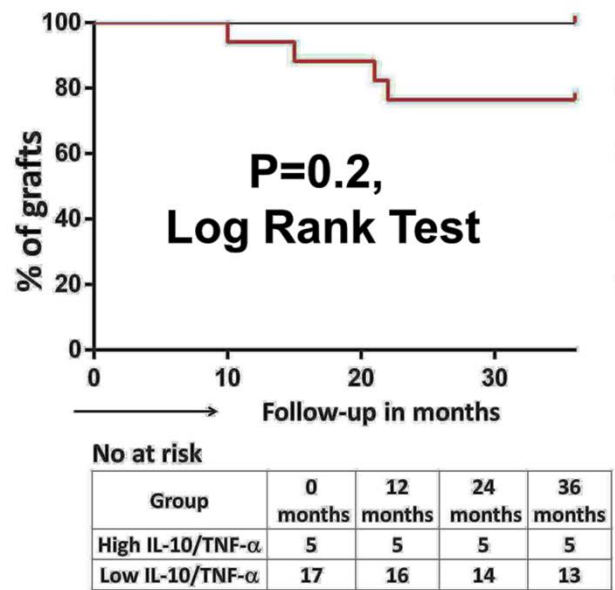
A**B**

Figure-S4: Graft survival in patients with graft dysfunction and rejection

(A) Kaplan Meier survival curves for the high and low IL-10/TNF- α (TrB) for graft loss over 3 years in patients with (A) graft dysfunction and (B) rejection (GD-R group).