

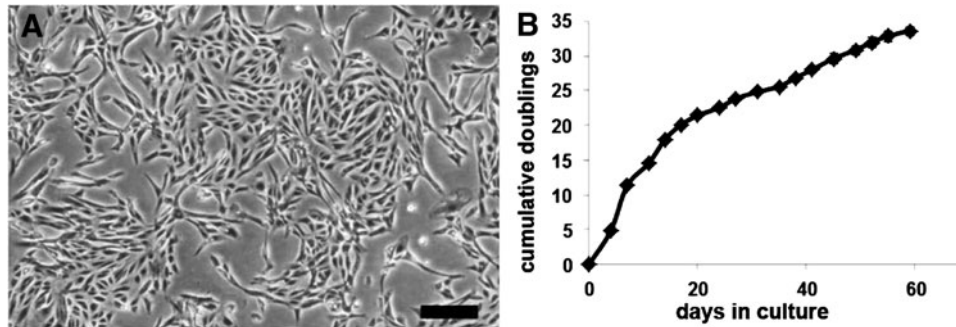
Supplementary Data

Supplementary Materials and Methods

Cell growth potential

Human kidney-derived cells were plated at 5000 cells/cm² onto two T75 flasks in renal epithelial growth medium

(#CC-3190; Lonza) and cultured at 37°C and 5% CO₂. Cells were passaged every 2–7 days. At each passage, cells were counted and viability was measured using a Guava instrument (Guava Technologies). Population doublings were calculated.



SUPPLEMENTARY FIG. S1. (A) Light microscopic image of human kidney-derived cells (hKDCs) at passage 4 shows a homogeneous epithelial morphology. Scale bar = 200 μm. (B) For growth kinetics, hKDCs were cultured in renal epithelial growth medium until cells reached senescence. Senescence was determined when cells failed to achieve greater than one population doubling during the study time interval.