

A

banana



B

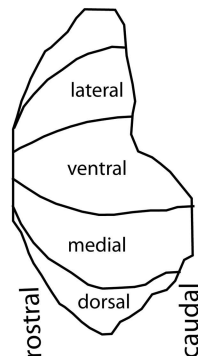
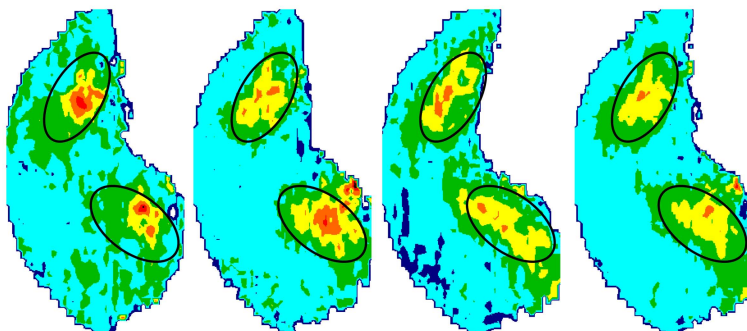
study 1

study 2

study 3

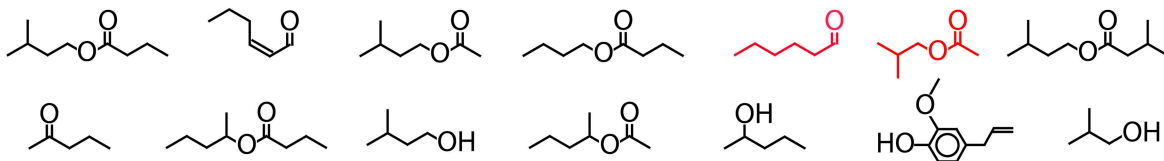
average

orientation



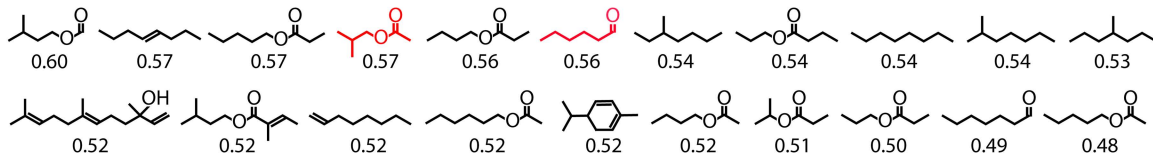
C

Major volatile components



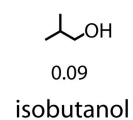
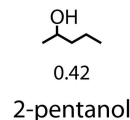
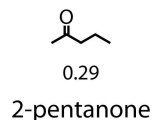
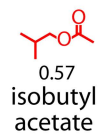
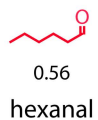
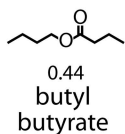
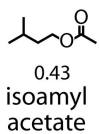
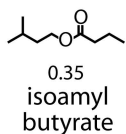
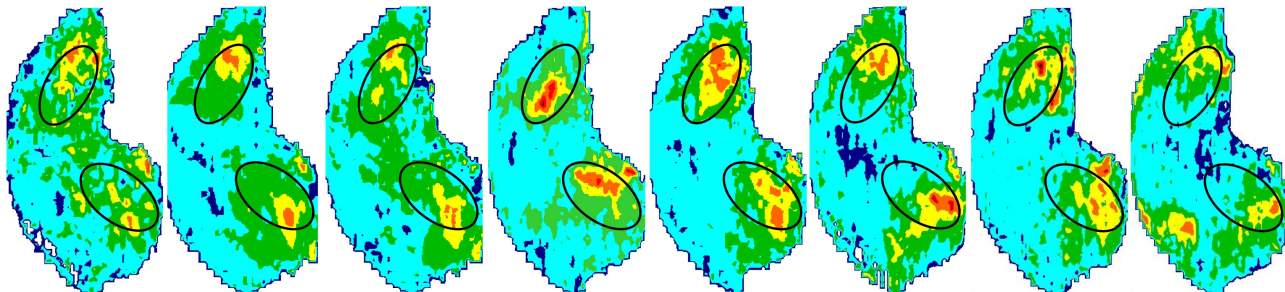
D

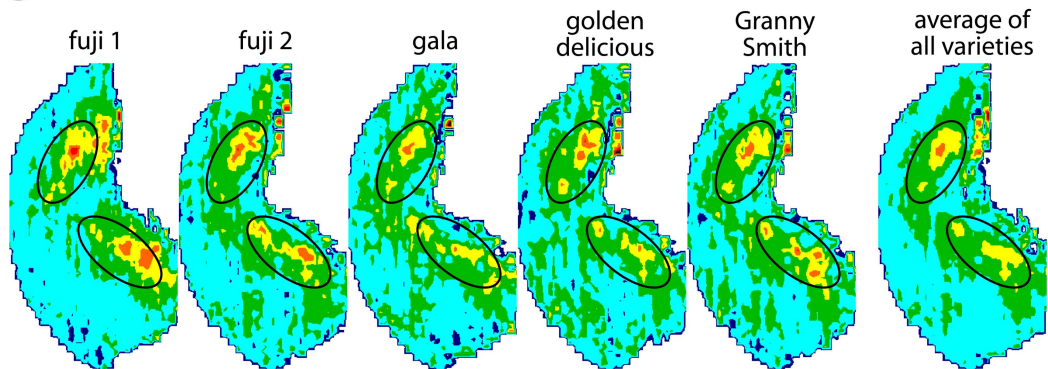
Odorants in archive giving highest correlations



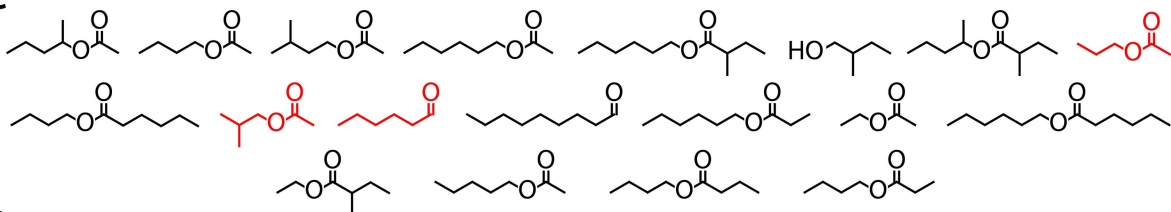
E

Patterns evoked by components in archive

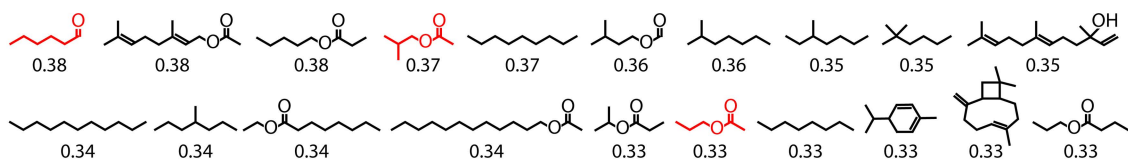


A apple**B****C**

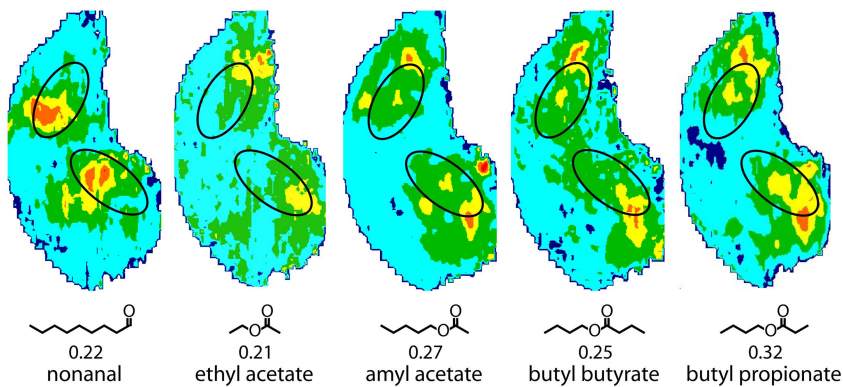
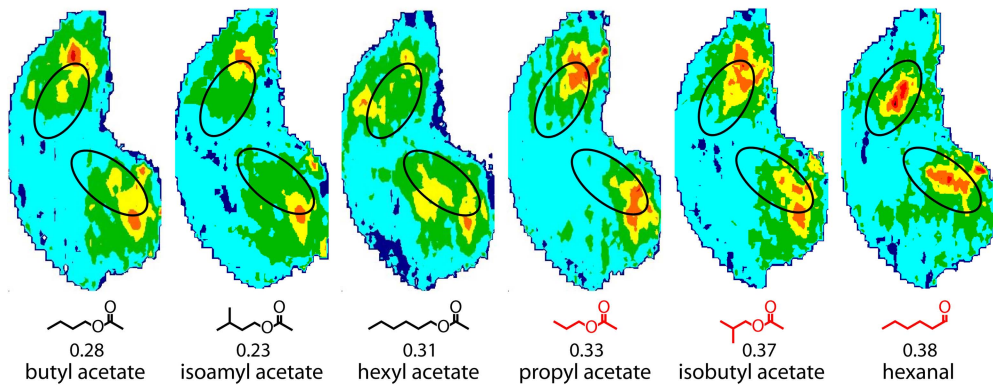
Major volatile components

**D**

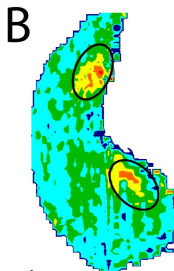
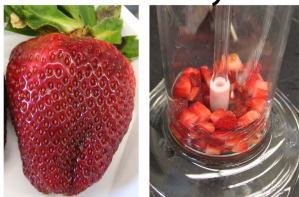
Odorants in archive giving highest correlations

**E**

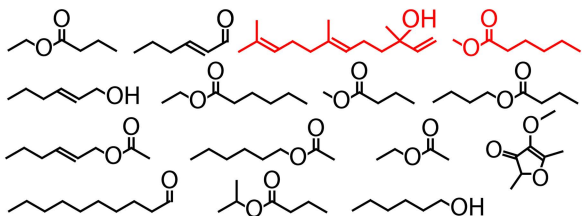
Patterns evoked by components in archive



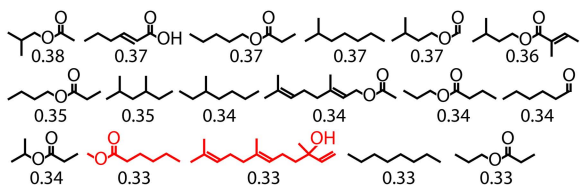
A strawberry



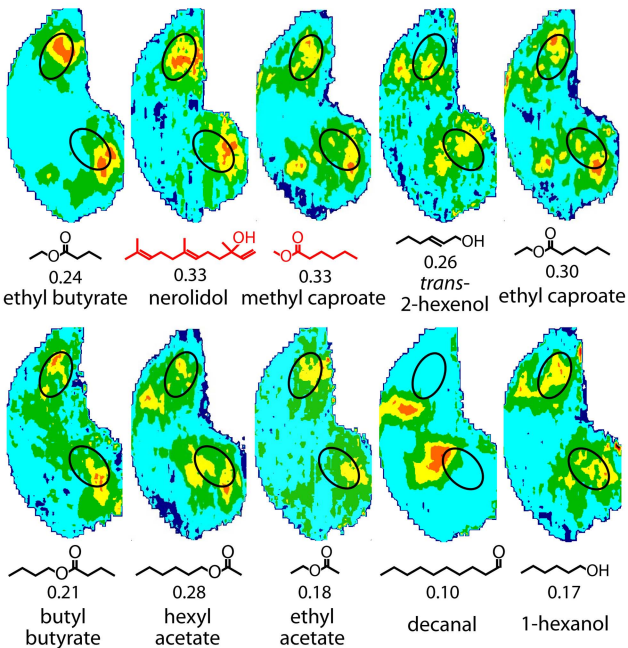
C Major volatile components



D Odorants in archive giving highest correlations

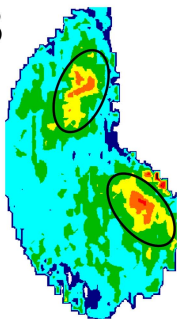


E Patterns evoked by components in archive

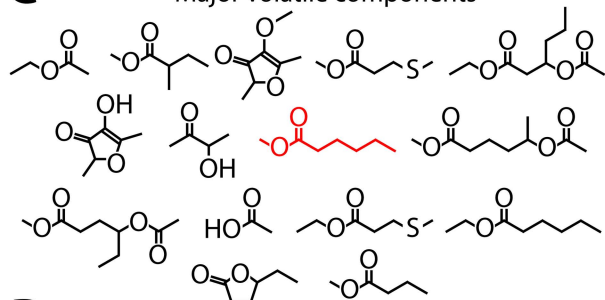


A

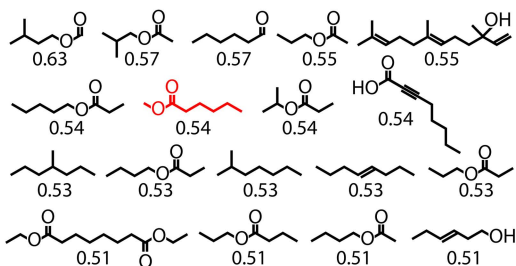
pineapple

**B****C**

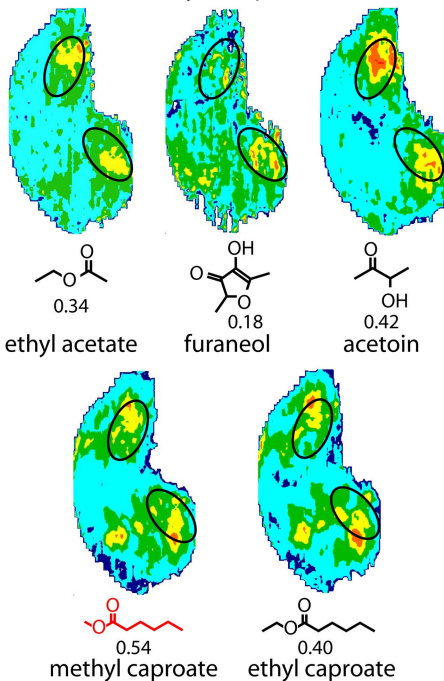
Major volatile components

**D**

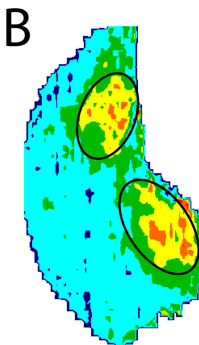
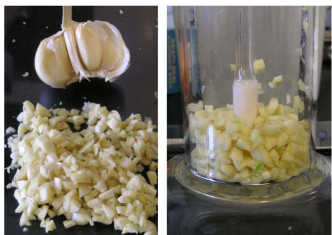
Odorants in archive giving highest correlations

**E**

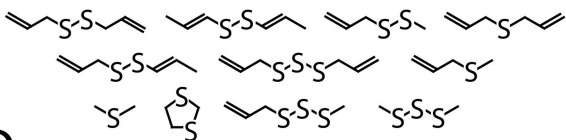
Patterns evoked by components in archive



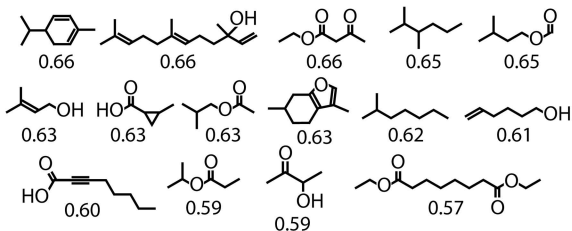
A garlic



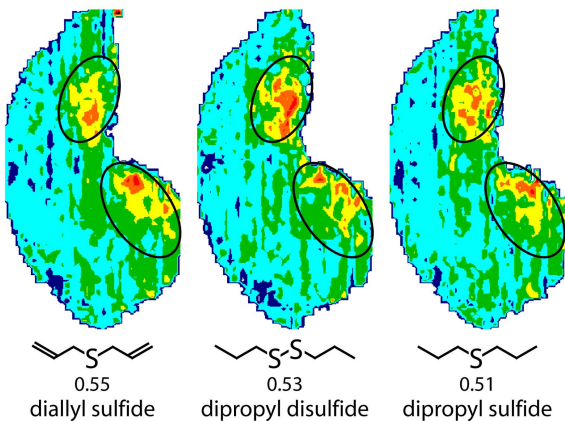
C Major volatile components



D Odorants in archive giving highest correlations



E Patterns evoked by odorants related to major components

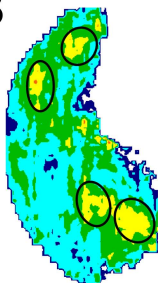


A

cinnamon bark

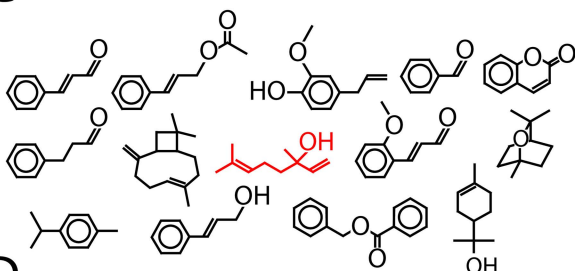


B



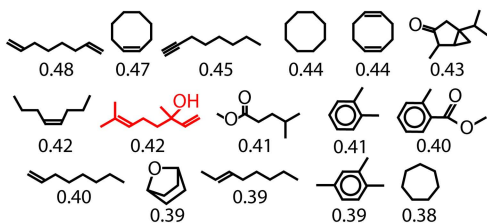
C

Major volatile components



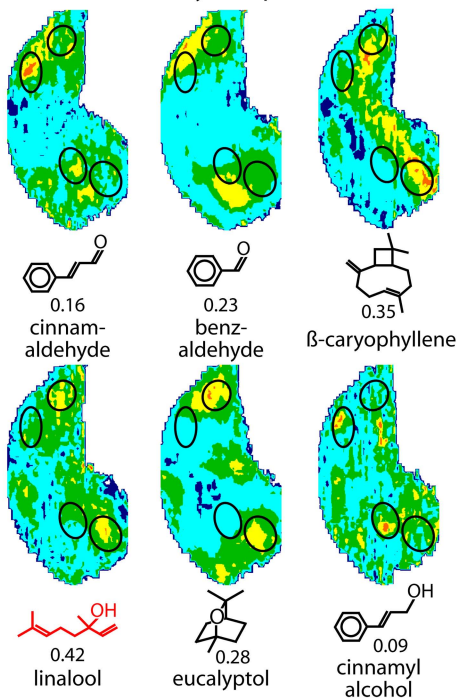
D

Odorants in archive giving highest correlations

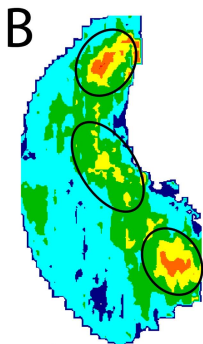


E

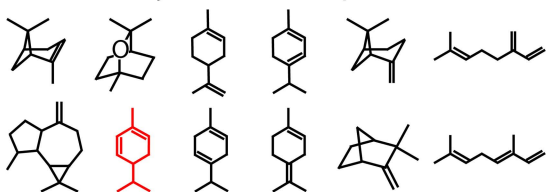
Patterns evoked by components in archive



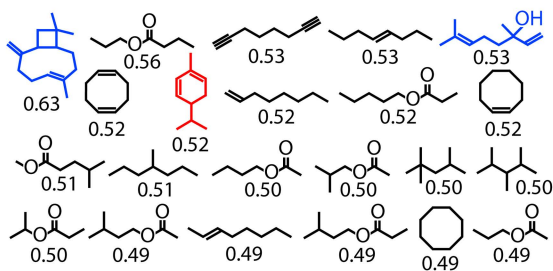
A eucalyptus leaves



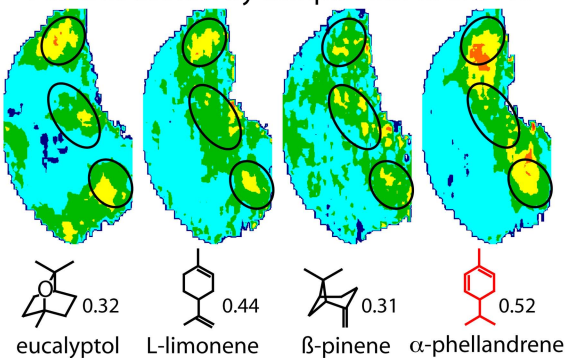
C Major volatile components



D Odorants in archive giving highest correlations

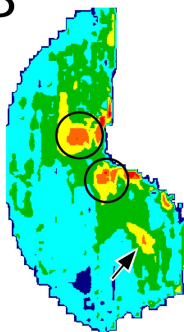


E Patterns evoked by components in archive

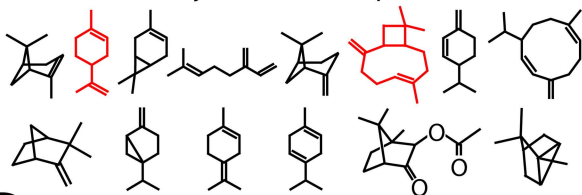


A

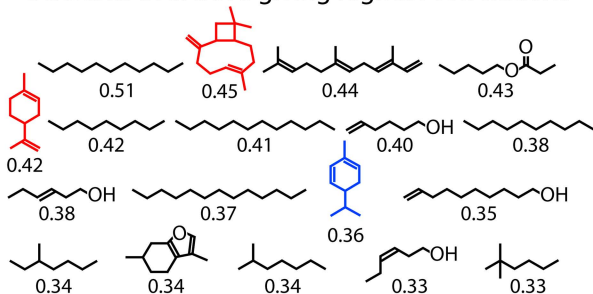
pine needles

**B****C**

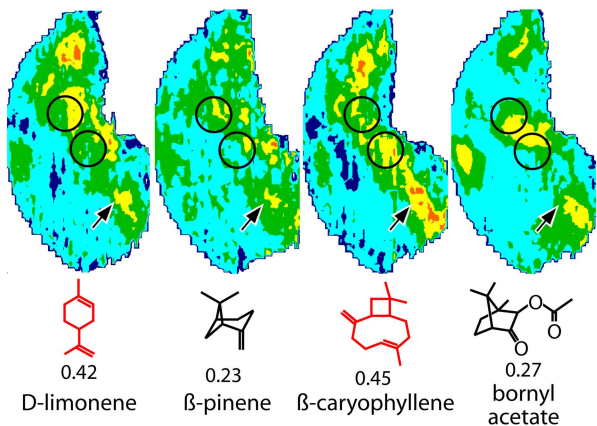
Major volatile components

**D**

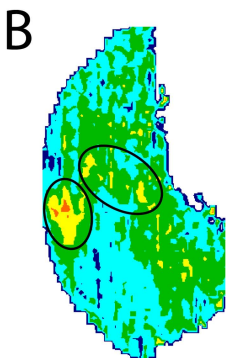
Odorants in archive giving highest correlations

**E**

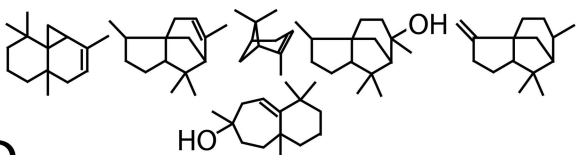
Patterns evoked by components in archive



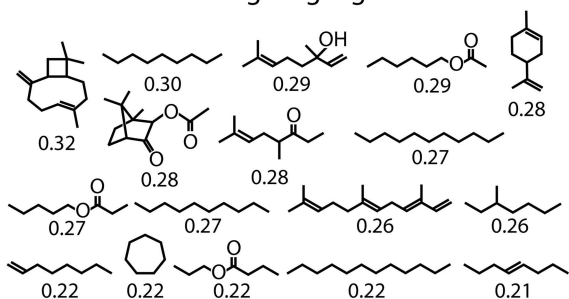
A cedarwood



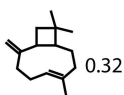
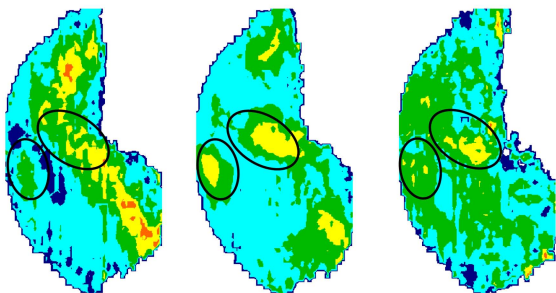
C Major volatile components



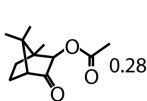
D Odorants in archive giving highest correlations



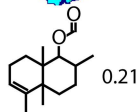
E Patterns evoked by odorants related to major components



β -caryophyllene



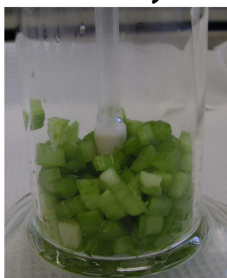
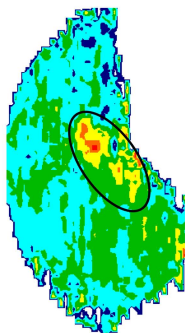
bornyl acetate



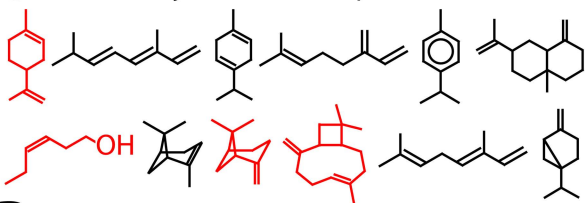
oxyoctaline formate

A

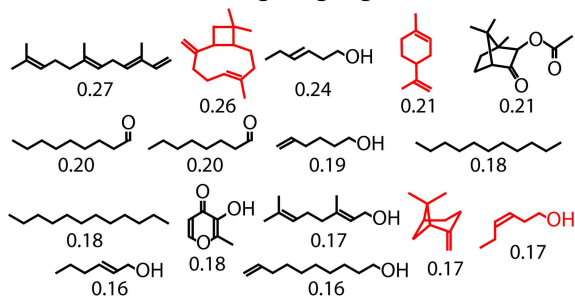
celery

**B****C**

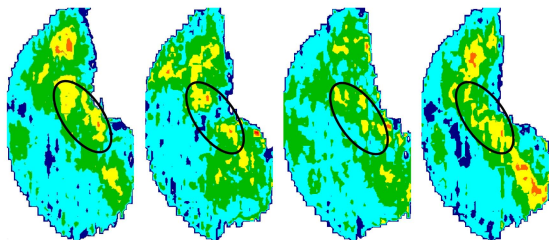
Major volatile components

**D**

Odorants in archive giving highest correlations

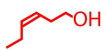
**E**

Patterns evoked by components in archive



0.21

D-limonene



0.17

cis-3-hexen-1-ol



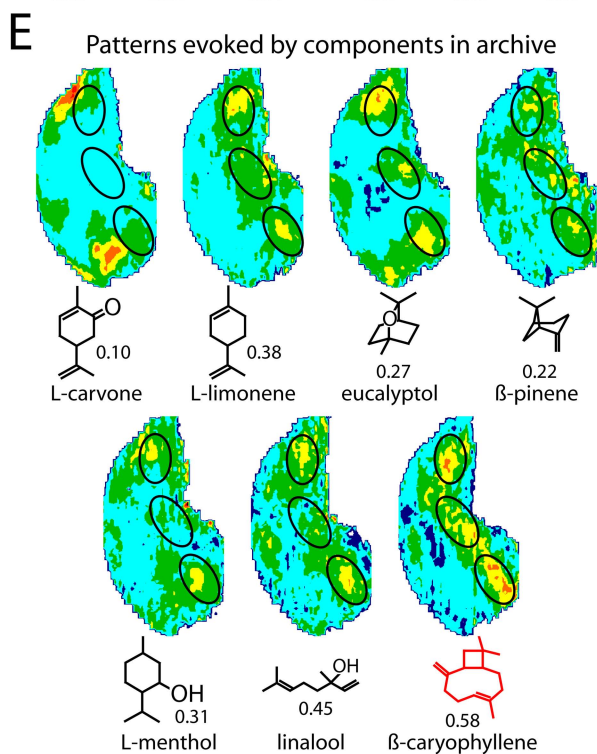
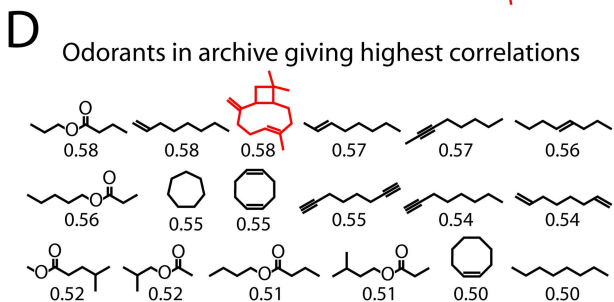
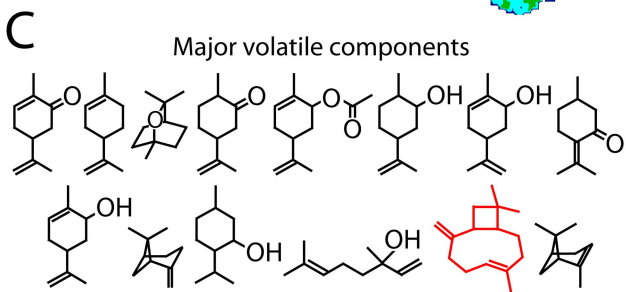
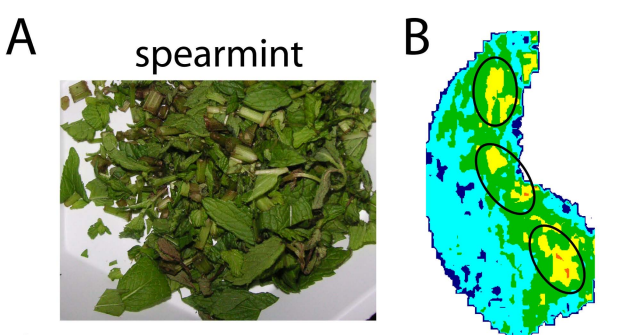
0.17

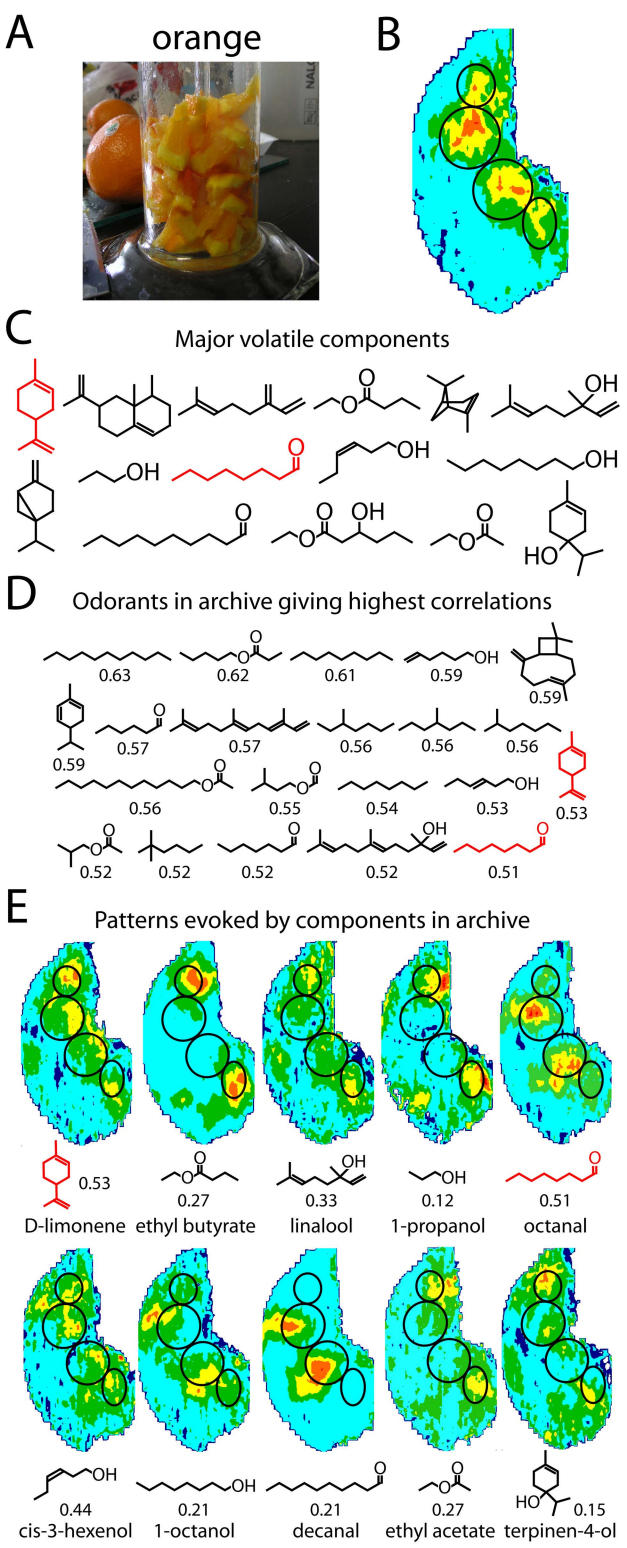
β-pinene



0.26

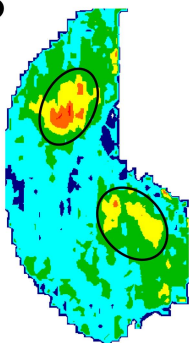
β-caryophyllene



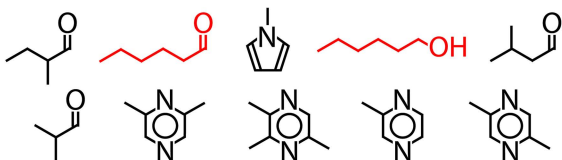


A

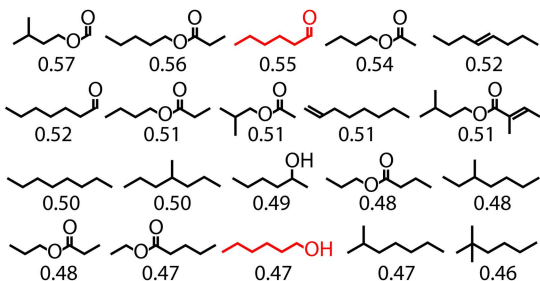
peanut butter

**B****C**

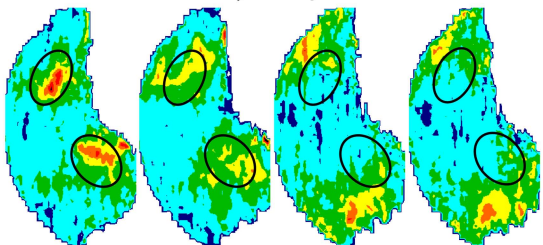
Major volatile components

**D**

Odorants in archive giving highest correlations

**E**

Patterns evoked by components in archive



0.55

hexanal



0.47

1-hexanol



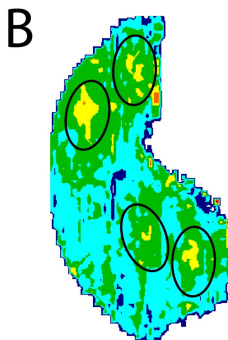
0.17

2,6-dimethyl-
pyrazine

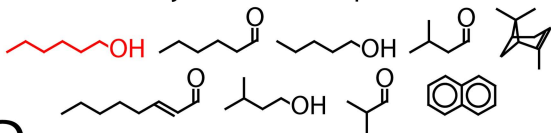
0.13

2,3,5-tri-
methylpyrazine

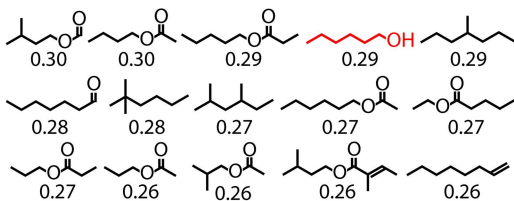
A wheat bran



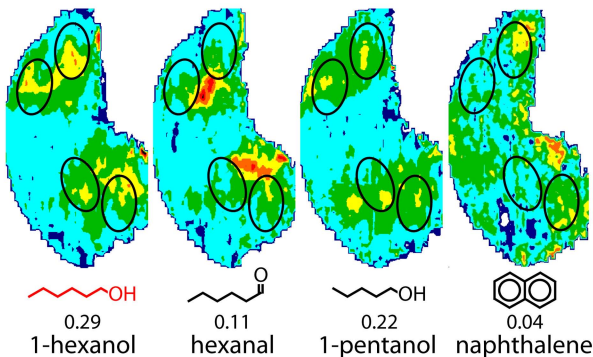
C Major volatile components

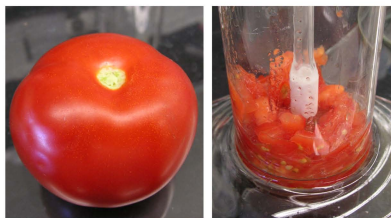
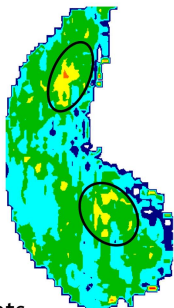
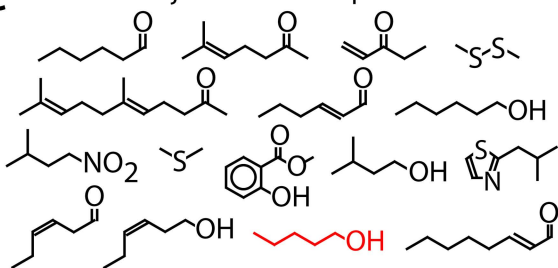
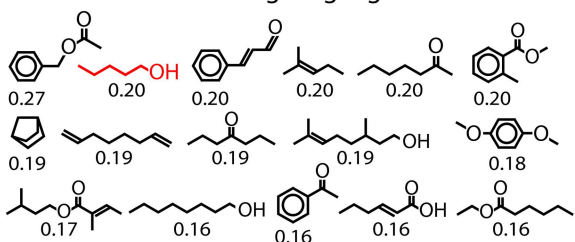
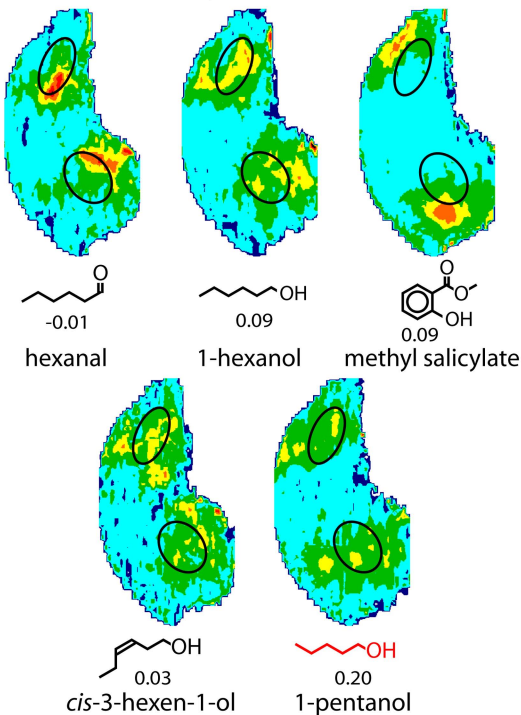


D Odorants in archive giving highest correlations



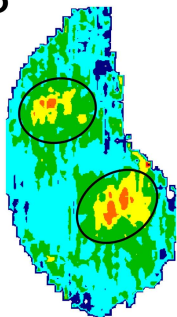
E Patterns evoked by components in archive



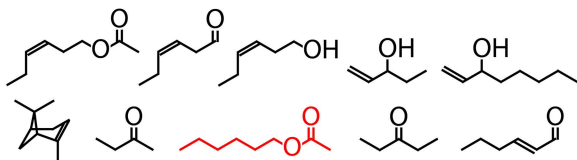
A tomato**B****C** Major volatile components**D** Odorants in archive giving highest correlations**E** Patterns evoked by components in archive

A

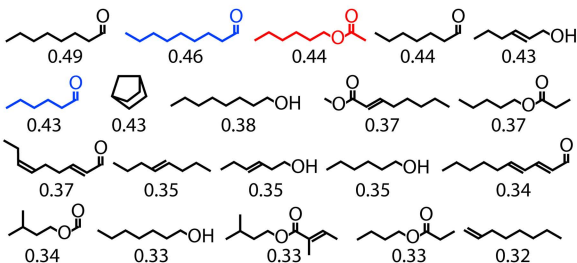
grass

**B****C**

Major volatile components

**D**

Odorants in archive giving highest correlations

**E**

Patterns evoked by components in archive

