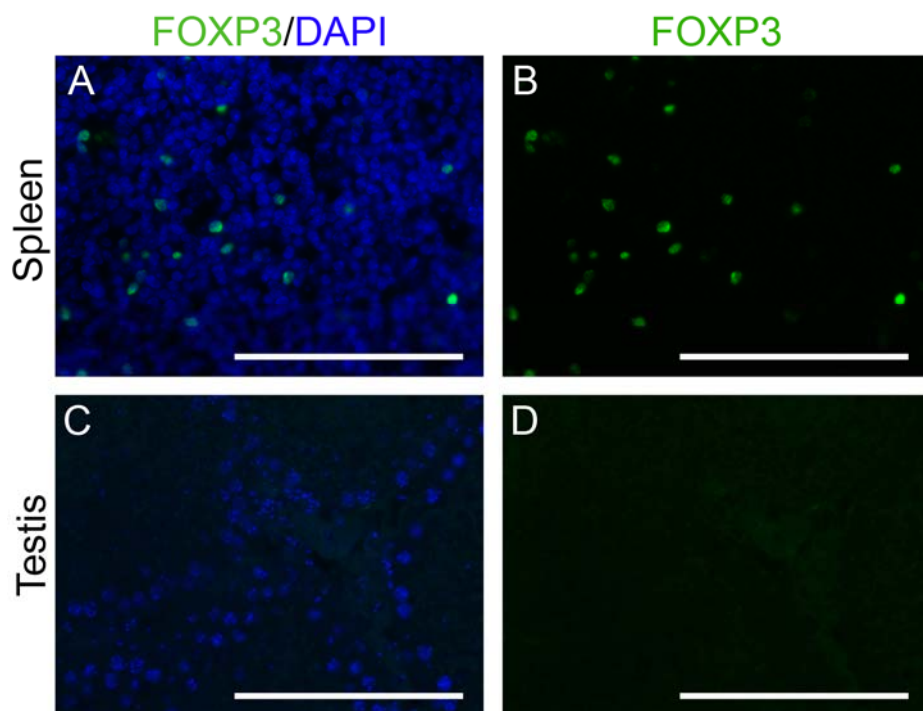


Supplemental Figure S1



Supplemental Figure S1. To determine which testicular cell types contain FOXP3 protein, we performed immunohistochemistry on sections of spleen (positive control) (**A**, **B**) and sections of testis (**C**, **D**). **A**, **C**) FOXP3 (green) and cell nuclei marked with DAPI (blue). **B**, **D**) FOXP3 (green) without the nuclear stain is also shown. FOXP3 protein is readily detected in spleen, a tissue known to express FOXP3, but is not detected in testis. Four animals were analyzed in this study and a representative staining is shown. Original magnification x630, bars = 100 μ m.