

	WT	β ERKO
N	17	20
Number of animals with		
0 litters	0	7 (35%)
1 litters	0	8 (40%)
2 litters	3 (18%)	3 (15%)
3 litters	4 (23%)	1 (5%)
4 litters	7 (41%)	1 (5%)
5 litters	3 (18%)	0
Average number of litters/animal (\pm SEM)	3.6 \pm 0.2	1.1 \pm 0.2*
Average number of pups/litter (\pm SEM)	8.6 \pm 0.4	2.8 \pm 0.2*
Average number of pups/dam (\pm SEM)	30.5 \pm 2.4	3.0 \pm 0.8*

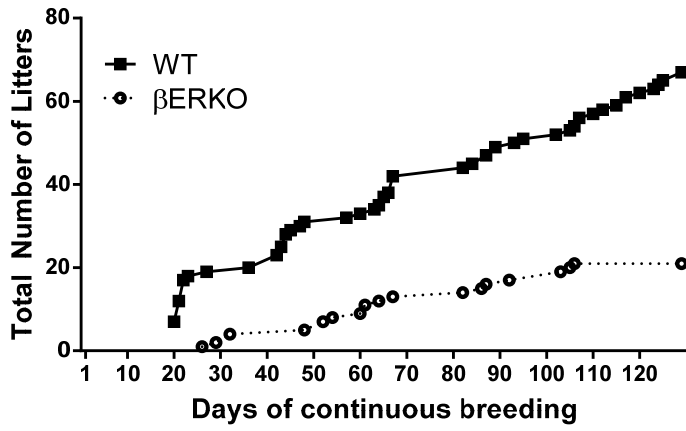
* Different from WT; $p < 0.001$ by unpaired 2-sided t-test.

Supplemental Table S1

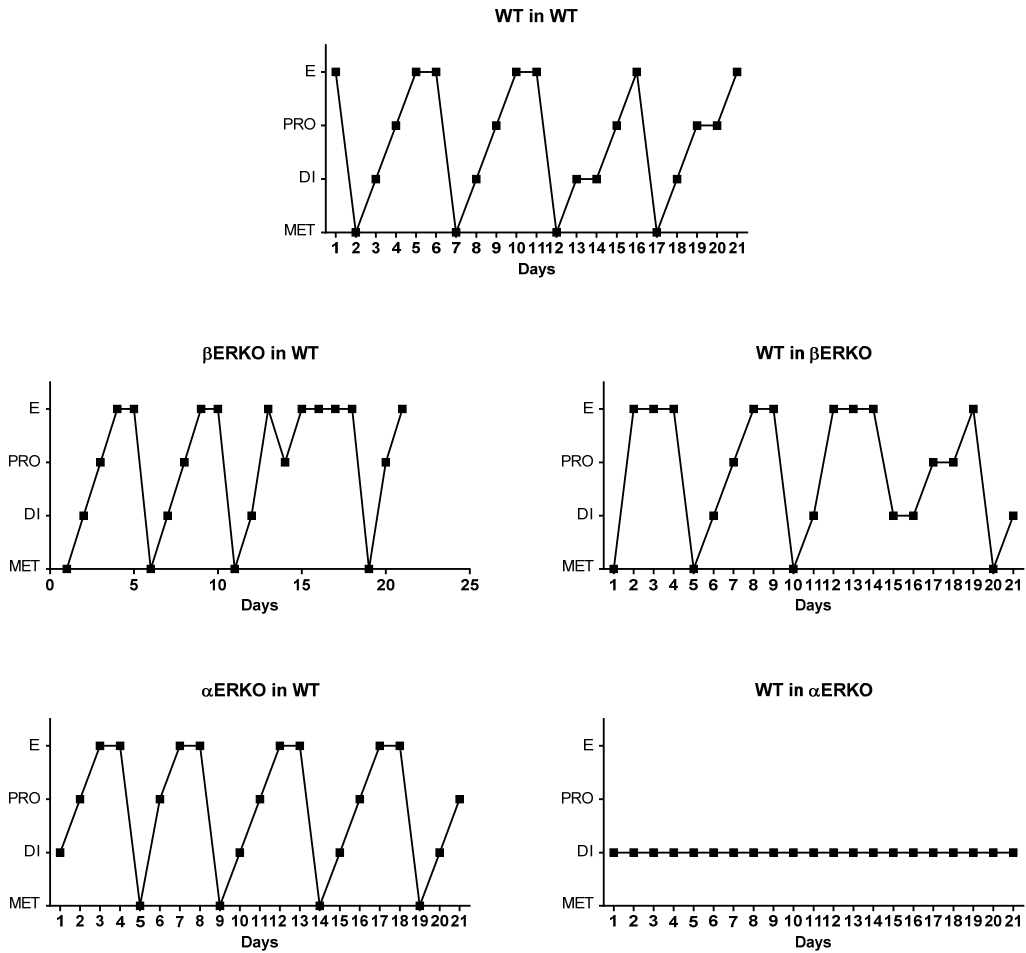
	WT in WT		β ERKO in WT		WT in β ERKO		α ERKO in WT		WT in α ERKO	
N	20		21		18		13		10	
Number of animals with		%		%		%		%		%
0 litters	2	10.0	17	81.0	3	16.7	11	84.6	10	100.0
1 litters	0	0.0	2	9.5	1	5.6	1	7.7	0	0.0
2 litters	12	60.0	1	4.8	4	22.2	0	0.0	0	0.0
3 litters	6	30.0	1	4.8	10	55.6	1	7.7	0	0.0
average # litters/animal (SEM)	2.1 \pm 0.2		0.3 \pm 0.2*		2.2 \pm 0.3		0.3 \pm 0.2*		0*	
average # pups/litter (SEM)	4.4 \pm 0.5		0.7 \pm 0.3*		4.2 \pm 0.6		0.6 \pm 0.5*		0*	
average # pups/dam	10.4 \pm 1.3		1.2 \pm 0.8*		11.2 \pm 1.7		1.5 \pm 1.2*		0*	

* Different than WT; $p < 0.05$ by One-way ANOVA with Tukey's multiple comparison post-test.

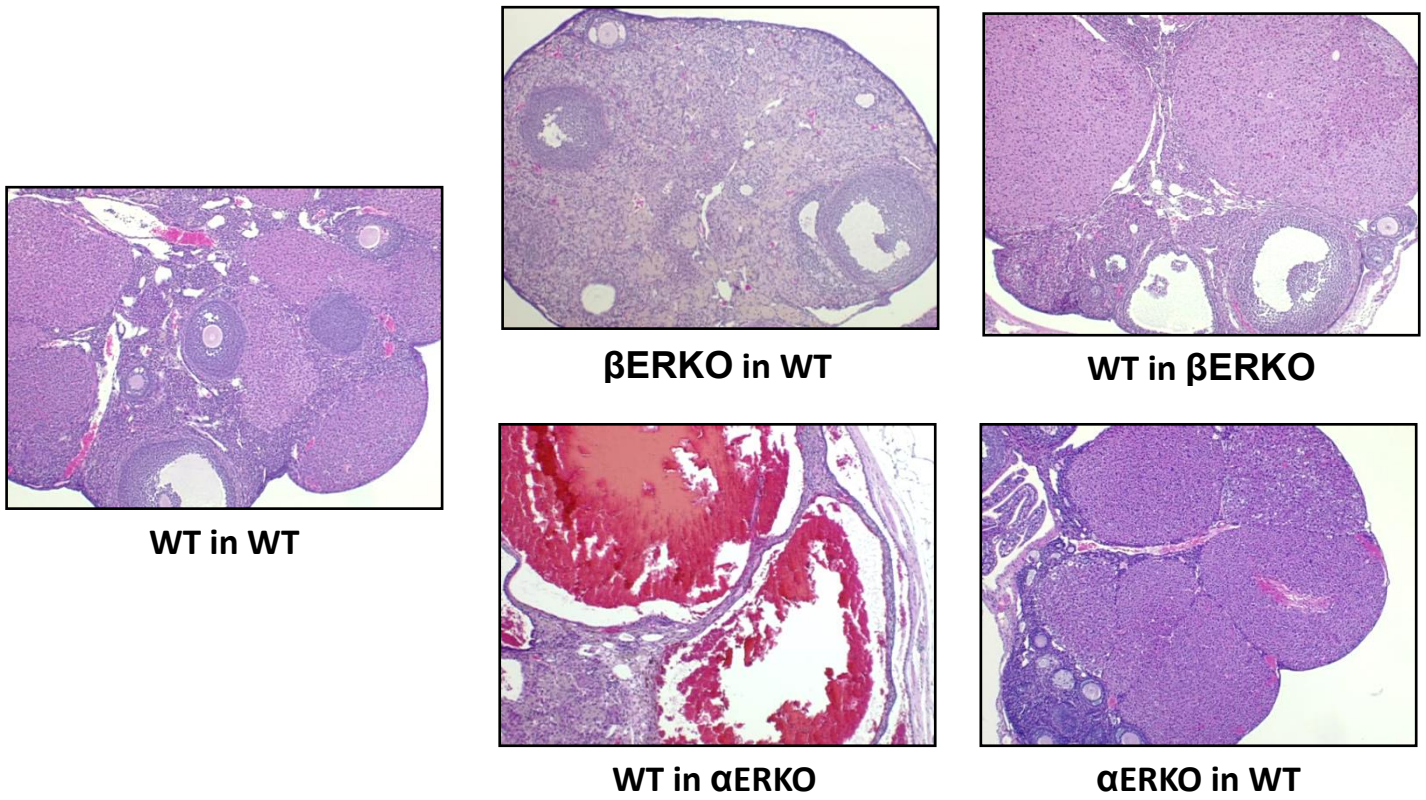
Supplemental Table S2



Supplemental Figure S1



Supplemental Figure S2



Supplemental Figure S3