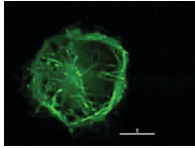


## SUPPLEMENTAL MATERIAL

Ogawa et al., <http://www.jem.org/cgi/content/full/jem.20131926/DC1>



**Video 1. Dynamic nature of the microtubule plus-end in WT, but not *Dock5*<sup>-/-</sup>, BMMCs.** BMMCs expressing GFP-tagged c-APC were sensitized with anti-DNP IgE antibody and then stimulated with DNP-HSA. Images were taken at 2-s intervals for 100 s, and a 10× time-lapse video is shown for WT and *Dock5*<sup>-/-</sup> BMMCs. Images are representative of 18 (for WT) or 20 (*Dock5*<sup>-/-</sup>) BMMCs collected from ten independent experiments. This video is shown at 5 frames/s. Bar, 5 μm.