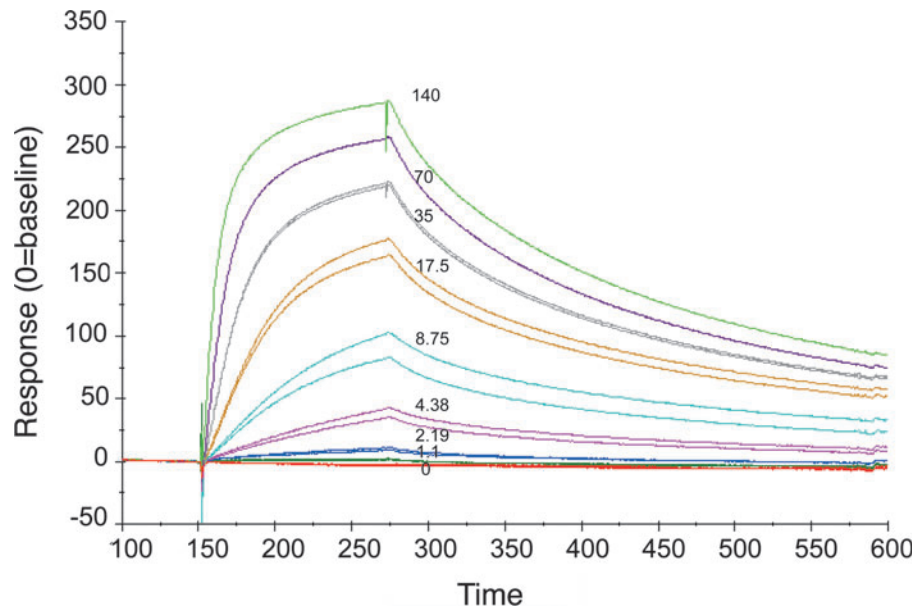


## Supplementary Data



**SUPPLEMENTARY FIG. S1.** Kinetic analysis of the Tim-3 Gal-9 interaction. Surface plasma resonance multicycle sensogram of a CM5 chip coupled with 1.82 ng of Tim-3 human IgG Fc chimera and a 2-fold concentration series of Gal-9 from 280 nM to 1.1 nM was injected over the surface is shown. Duplicates of each concentration of Gal-9 were used and multiple 0 nM buffer injections were included as blanks for double referencing.