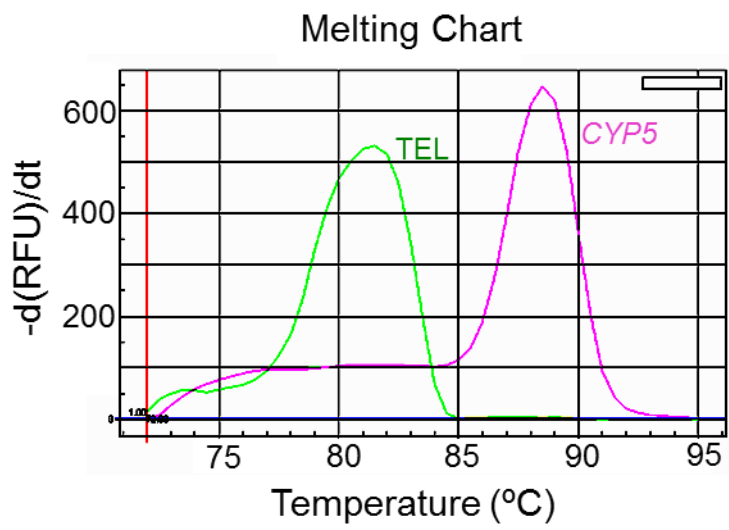


Determination of *Arabidopsis thaliana* telomere length by PCR

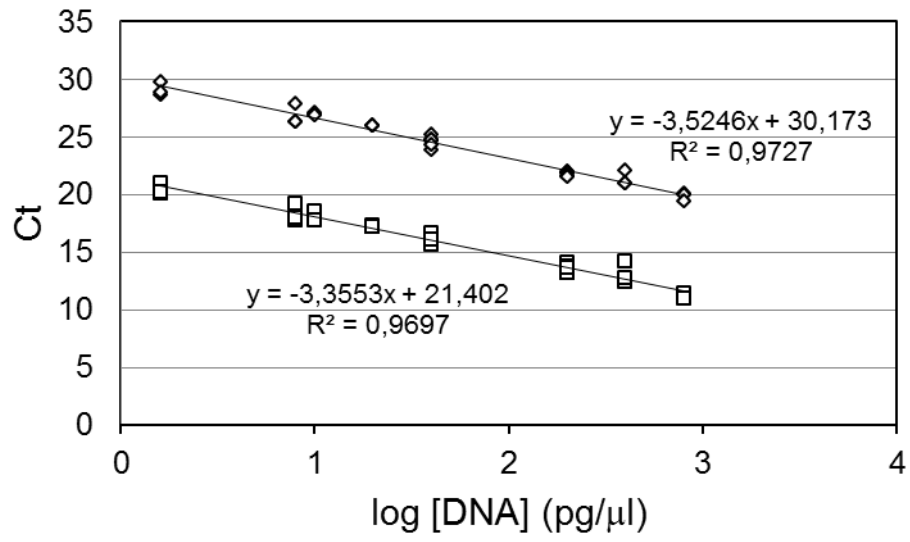
María I. Vaquero-Sedas & Miguel A. Vega-Palas*

Instituto de Bioquímica Vegetal y Fotosíntesis, CSIC-Universidad de Sevilla,
IBVF (CSIC-US), c/ Américo Vespucio nº 49, 41092 Seville, Spain.

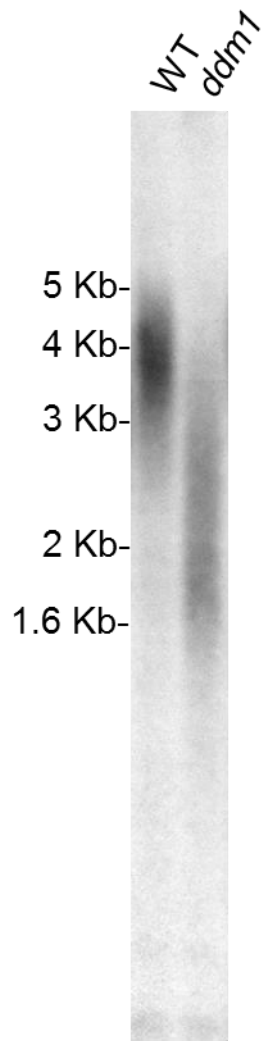
*Correspondence should be addressed to M.A.V. (vega-palas@ibvf.csic.es)



Supplementary Fig. 1

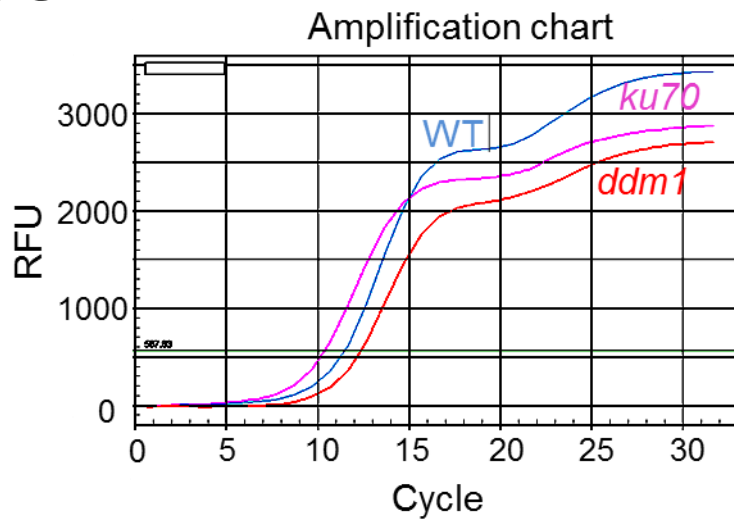


Supplementary Fig. 2

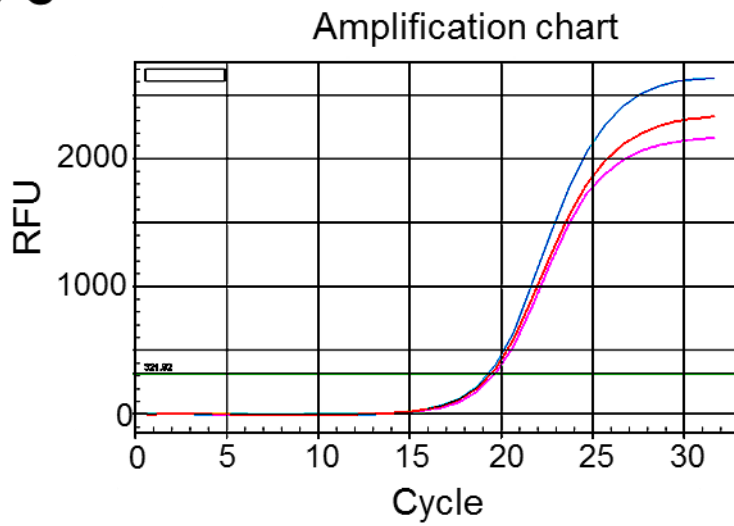


Supplementary Fig. 3

74°C



85°C



Supplementary Fig. 4

Legend to Supplementary Figure 1 | Melting curves of telomeric and *CYP5* amplification products. Dissociation curves obtained after amplifying Arabidopsis wild type bulk genomic DNA with primers TelA and TelB (green) or with the primers designed to amplify a single copy sequence from the *CYP5* gene (pink) in the MMQPCR experiments. This figure has been performed as previously reported for humans¹⁹.

Legend to Supplementary Figure 2 | Standard curves used to determine relative T/S ratios. Eight different amounts of Arabidopsis wild type bulk genomic DNA samples, ranging from 20 ng to 40 pg, were used to perform MMQPCR reactions. Three independent MMQPCR reactions were performed for each DNA concentration. Telomeric (represented by squares) and *CYP5* (represented by diamonds) fluorescent signals were collected at 74°C and 85°C, respectively. The corresponding Cts are represented versus the log [DNA] expressed in pg/μl.

Legend to Supplementary Figure 3 | TRF analyses of Arabidopsis wild type and *ddm1* strains. A Southern blot hybridization of bulk genomic DNA samples digested with the restriction enzyme Tru9I is shown. The migration distances of molecular size markers are indicated in the left.

Legend to Supplementary Figure 4 | MMQPCR amplification of Arabidopsis wild-type, *ku70* and *ddm1* strains. Bulk genomic DNA samples from the wild type (blue), *ku70* (pink) and *ddm1* (red) strains were

analyzed by MMQPCR. Amplification curves at 74°C and at 85°C are shown. Note that the Ct values for *CYP5* (85°C) corresponding to the three strains are similar whereas the Ct values for telomeres (74°C) differ.