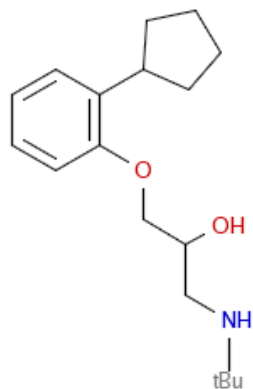
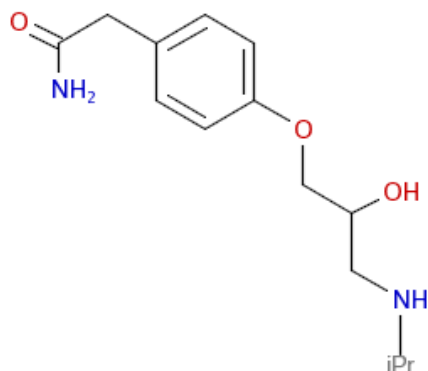


Figure S1. Hypertension drugs grouped by molecular structure similarity

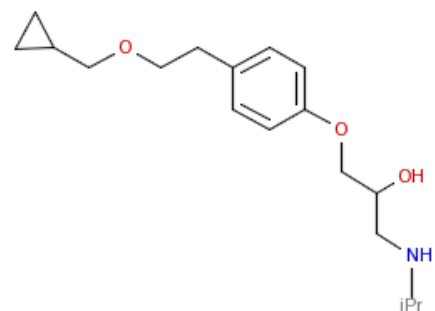
SimilarityGroup: 1



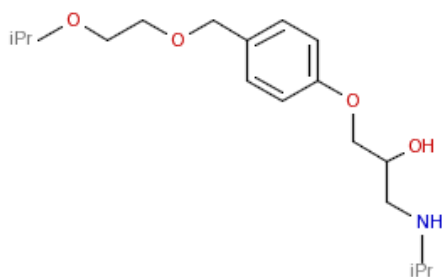
Penbutolol



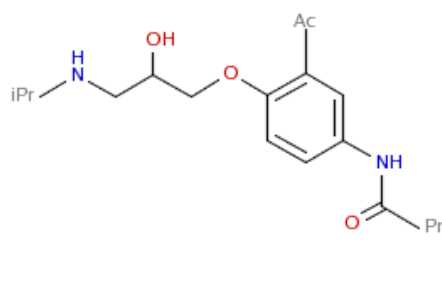
Atenolol



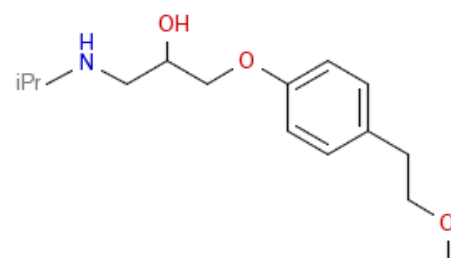
Betaxolol



Bisoprolol

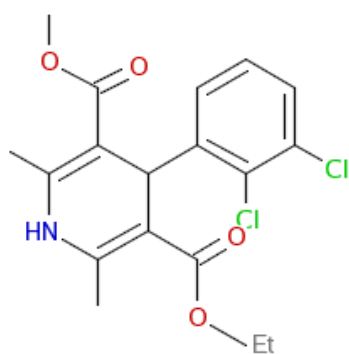


Acebutolol

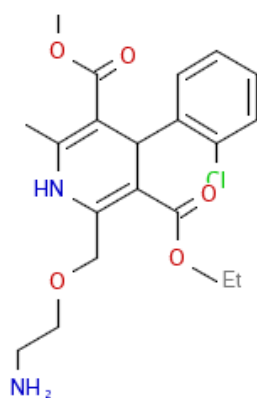


Metoprolol

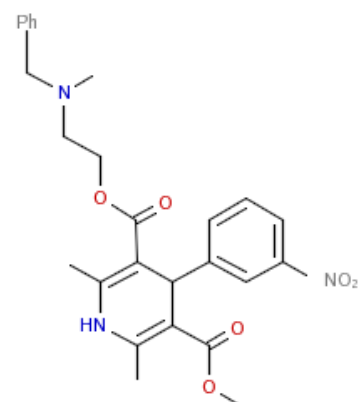
SimilarityGroup: 2



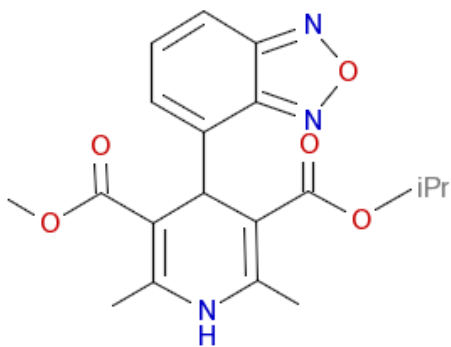
Felodipine



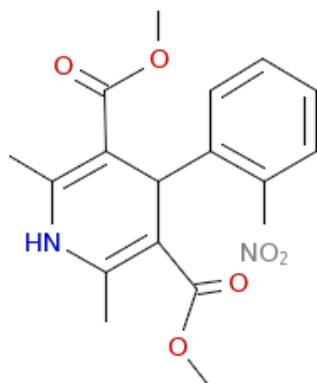
Amlodipine



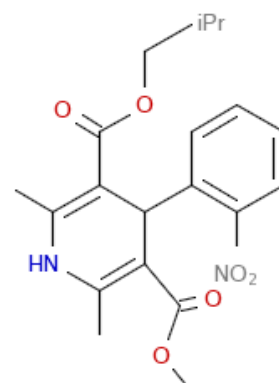
Nicardipine



Isradipine

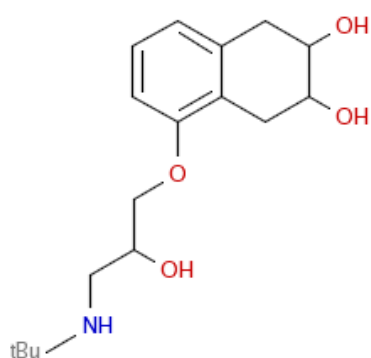


Nifedipine

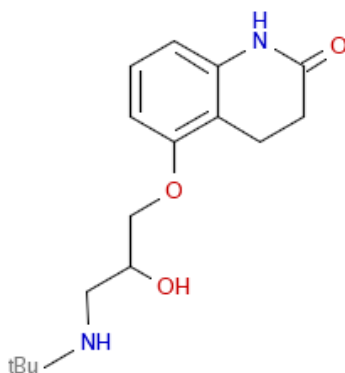


Nisoldipine

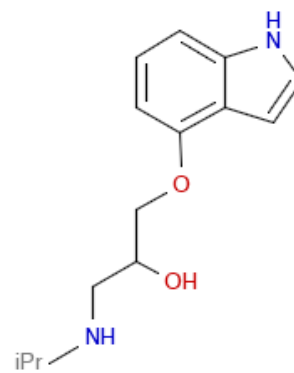
SimilarityGroup: 3



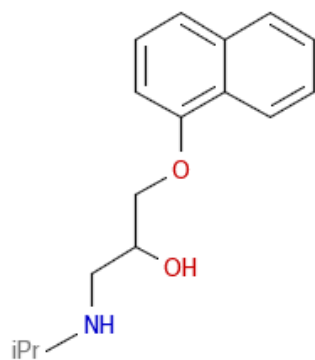
Nadolol



Carteolol

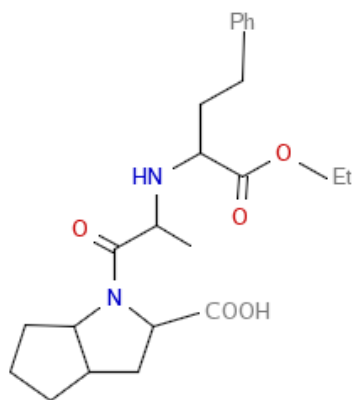


Pindolol

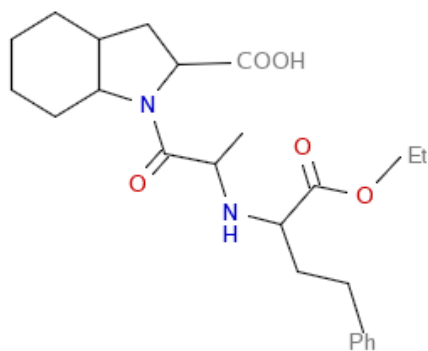


Propranolol

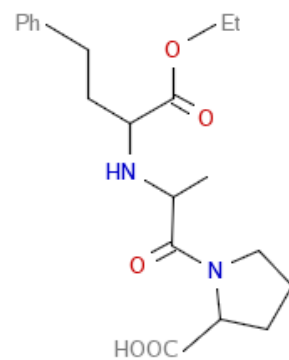
SimilarityGroup: 4



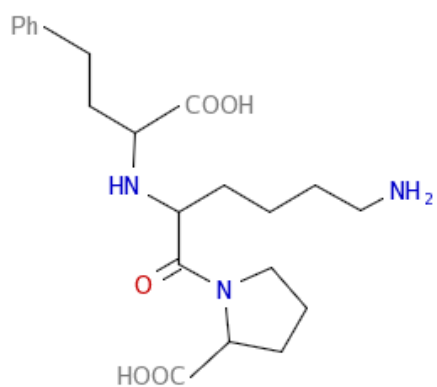
Ramipril



Trandolapril

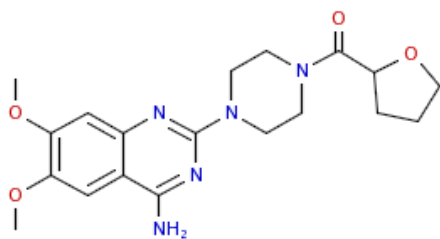


Enalapril

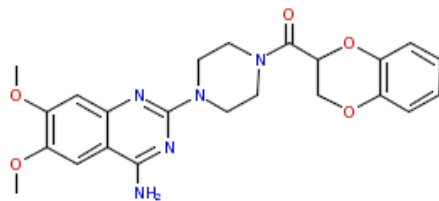


Lisinopril

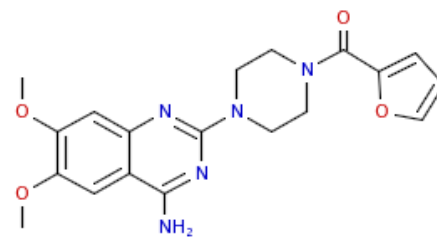
SimilarityGroup: 5



Terazosin

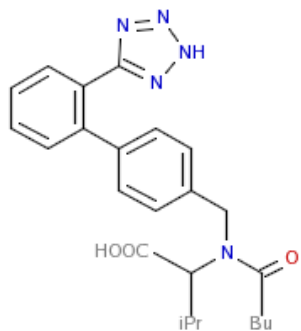


Doxazosin

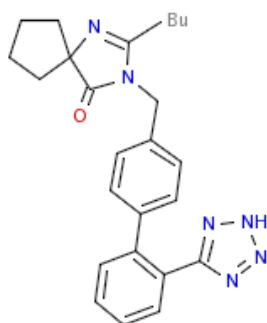


Prazosin

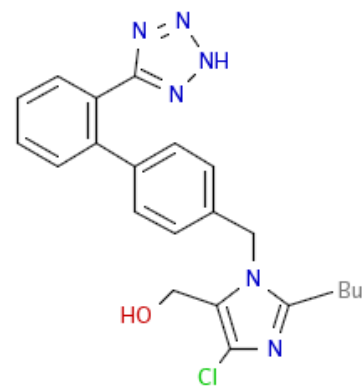
SimilarityGroup: 6



Valsartan

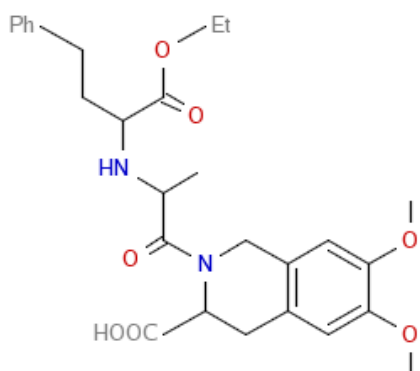


Irbesartan

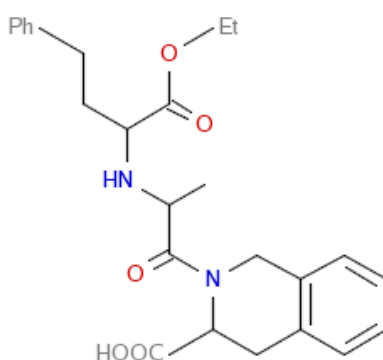


Losartan

SimilarityGroup: 7

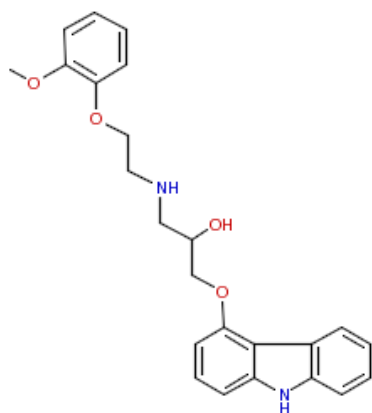


Moexipril

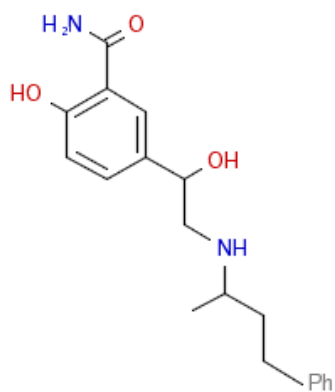


Quinapril

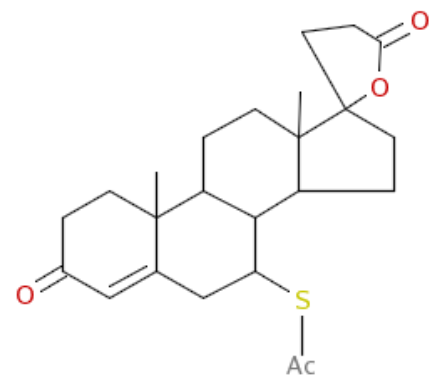
SimilarityGroup: Singletons



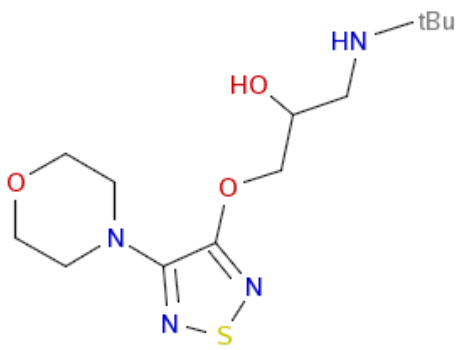
Carvedilol



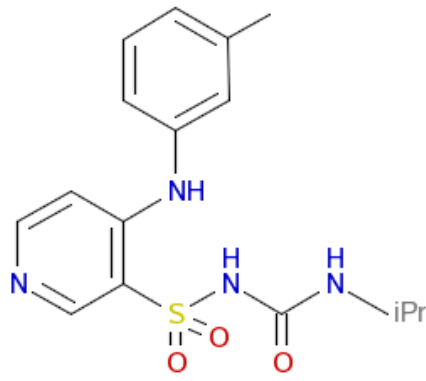
Labetalol



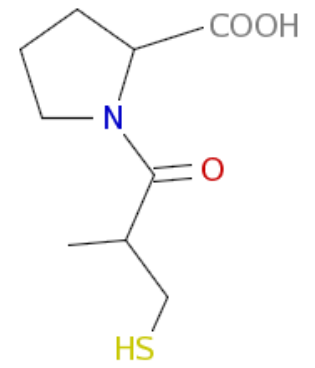
Spironolactone



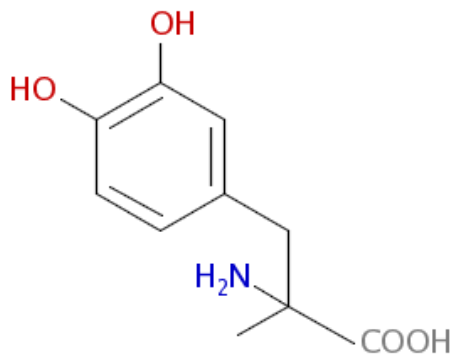
Timolol



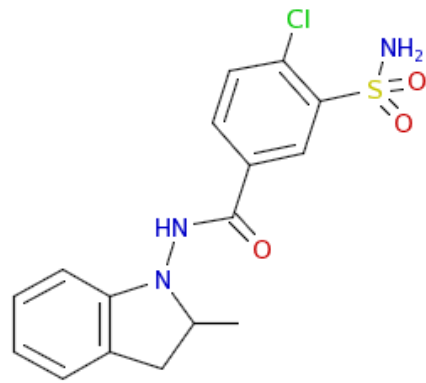
Torasemide



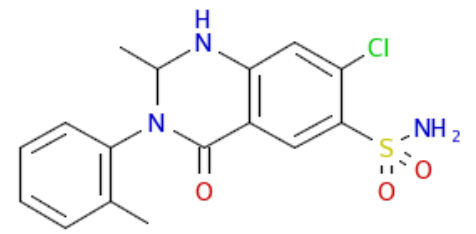
Captopril



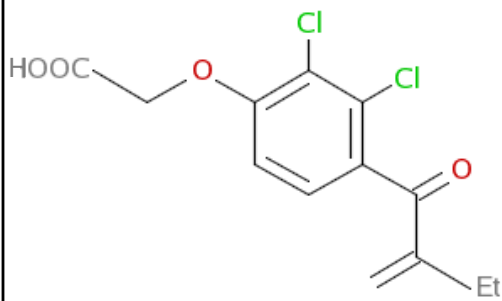
Methyldopa



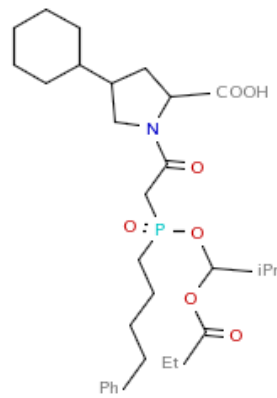
Indapamide



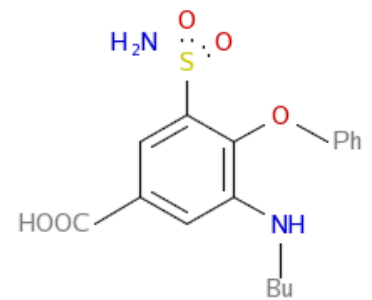
Metolazone



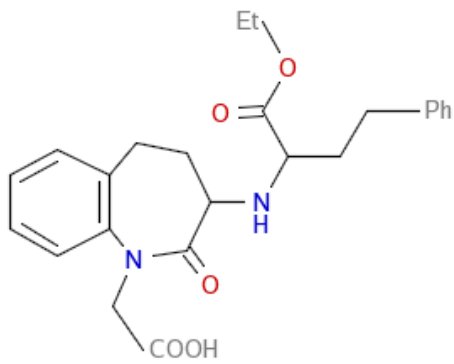
Ethacrynic acid



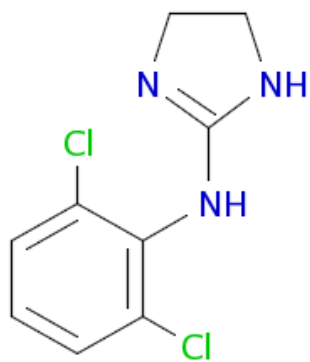
Fosinopril



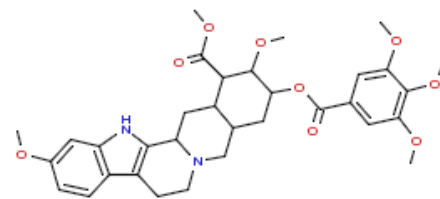
Bumetanide



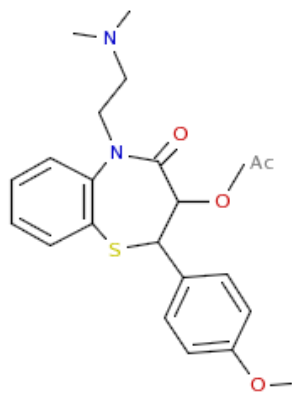
Benazepril



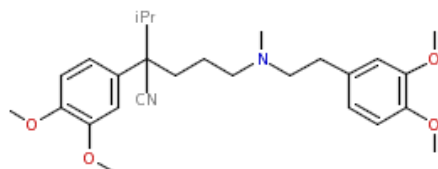
Clonidine



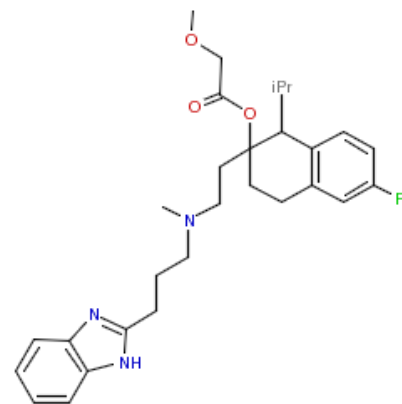
Reserpine



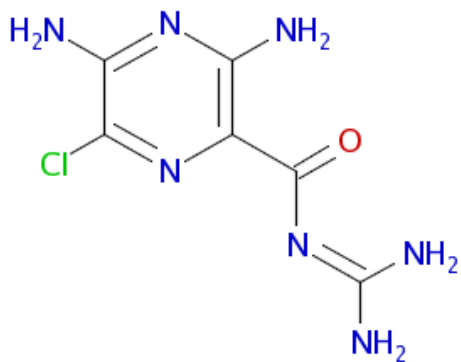
Diltiazem



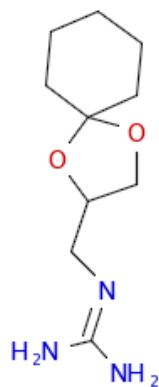
Verapamil



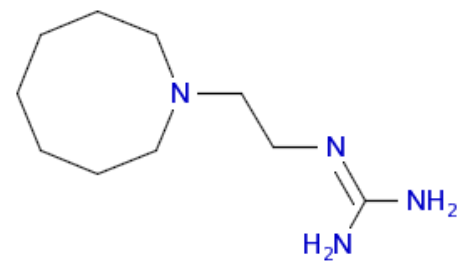
Mibefradil



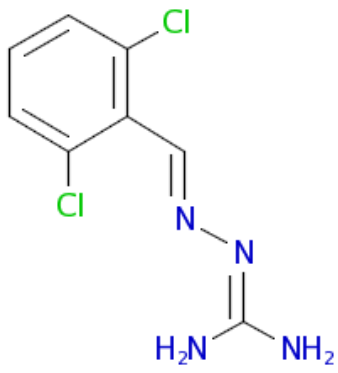
Amiloride



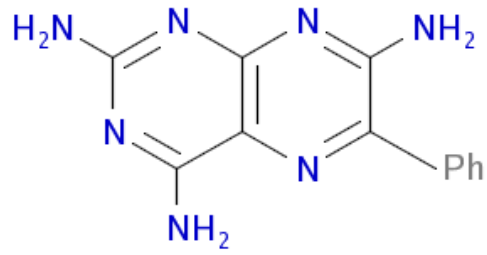
Guanadrel Sulfate



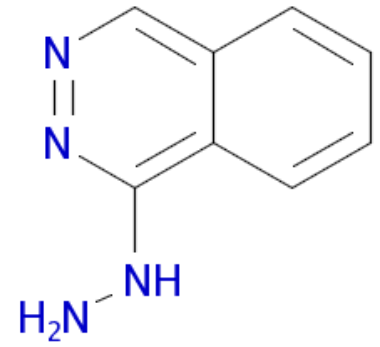
Guanethidine



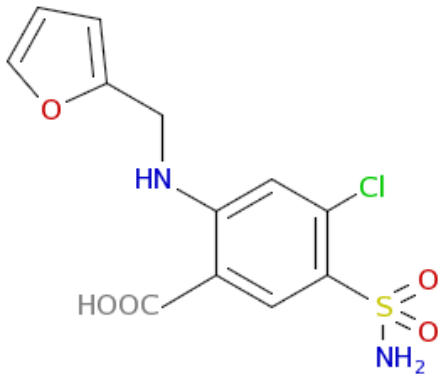
Guanabenz



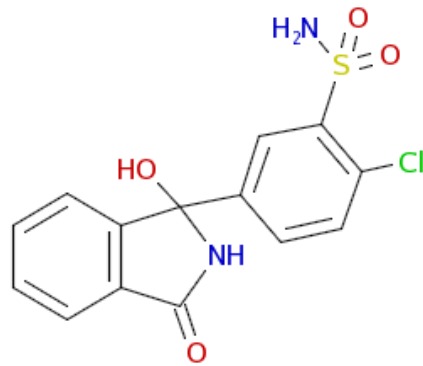
Triamterene



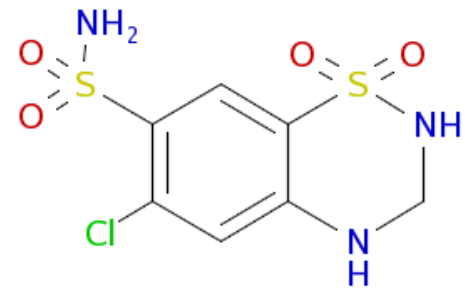
Hydralazine



Furosemide



Chlorthalidone



Hydrochlorothiazide