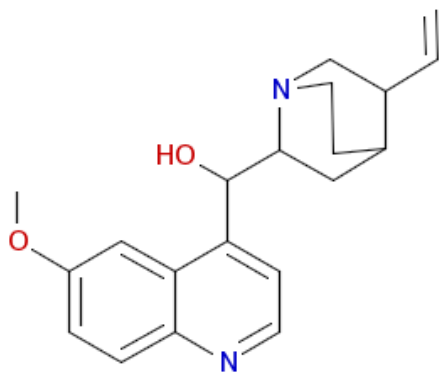
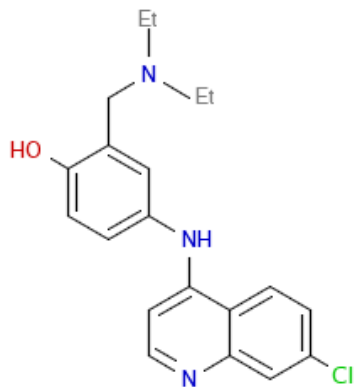


Figure S3. Malaria drugs grouped by molecular structure similarity

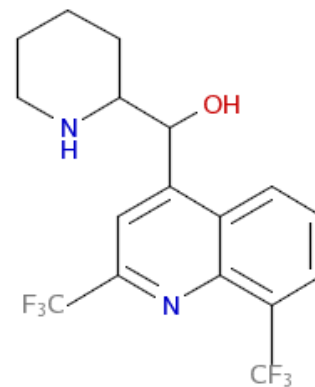
SimilarityGroup: 1



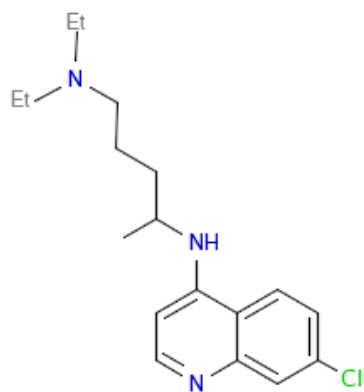
Quinine



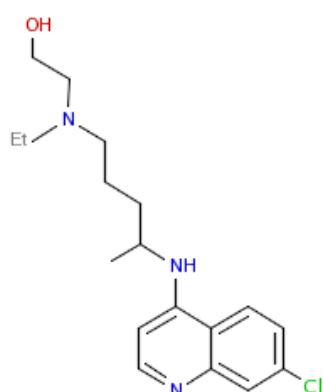
Amodiaquine



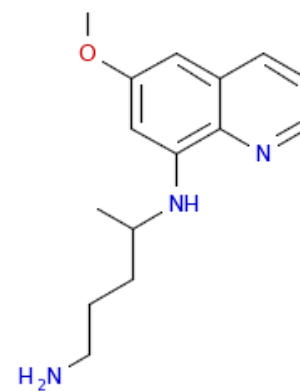
Mefloquine



Chloroquine

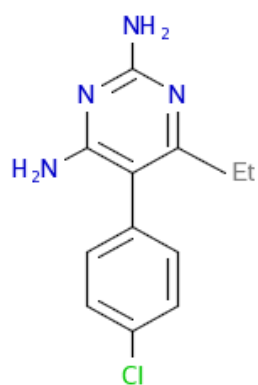


Hydroxychloroquine

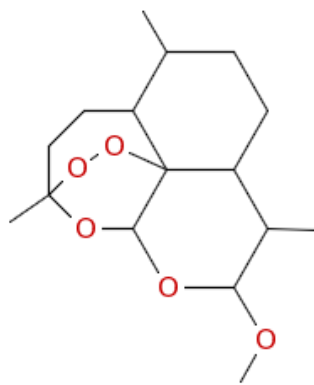


Primaquine

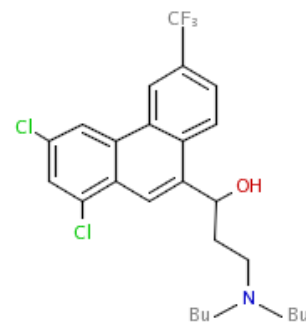
SimilarityGroup: Singleton



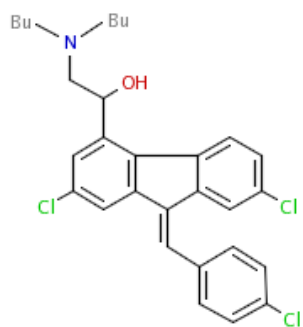
Pyrimethamine



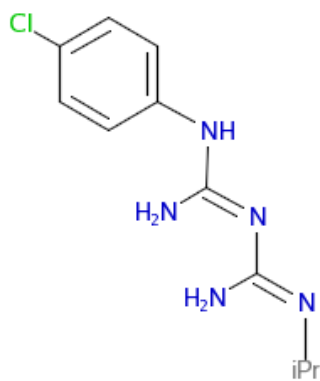
Artemether



Halofantrine



Lumefantrine



Proguanil