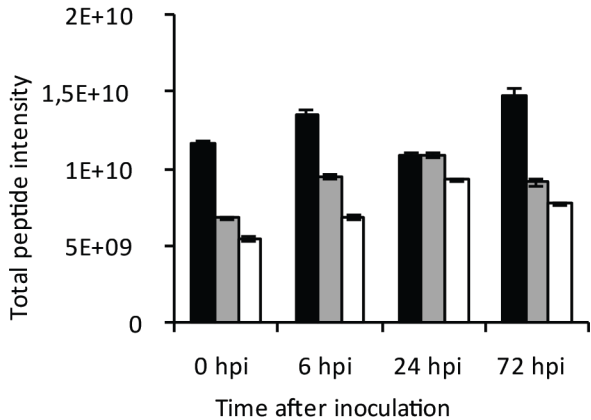
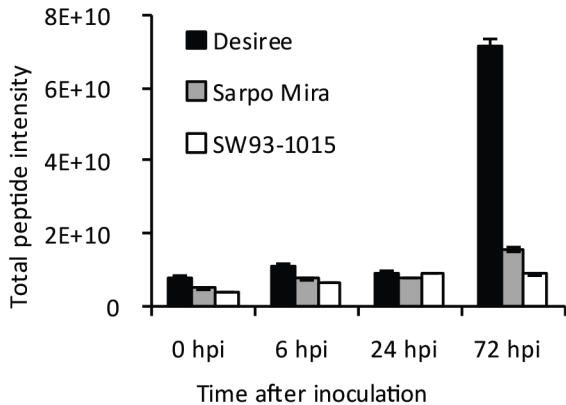


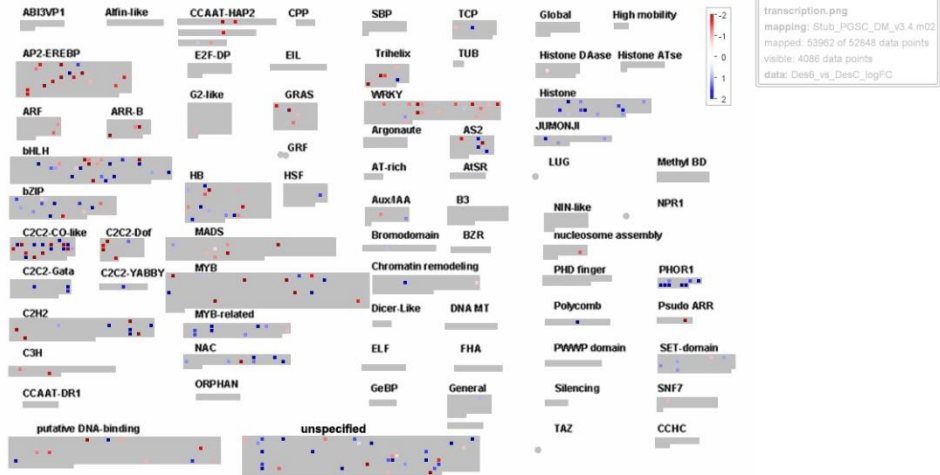
Supporting Information Figure S1: **Total peptide intensity for proteases and peptidases. a**, Sum of total intensities of 49 proteins in the secretome identified as glucanases and glucosidases (4 replicates) **b**, Sum of total intensities of 78 proteins in the secretome identified as Proteases and carboxypeptidases (4 replicates). Error bars indicated \pm SD of the mean.



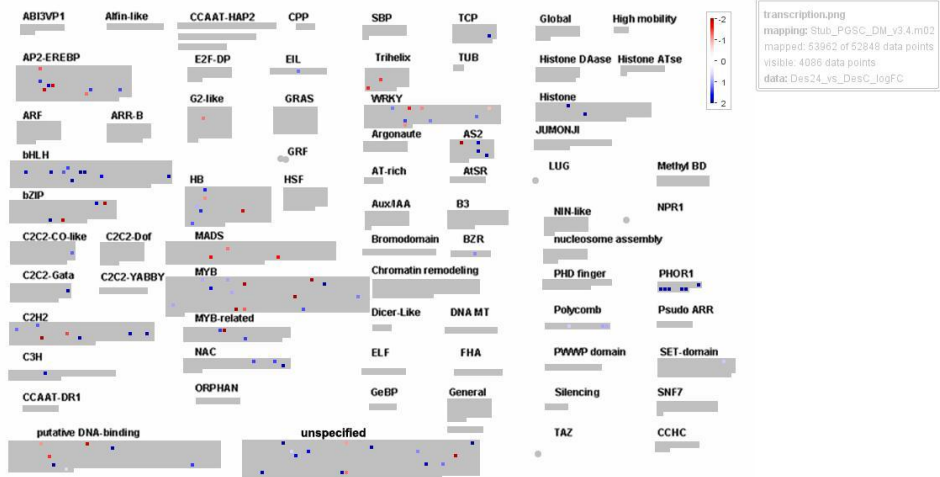
Supporting Information Figure S2: **Functional analysis of gene expression by MapMan.** Bins for genes related to hormones (a) and transcription (b) for Desirée, Sarpo Mira and SW-1015 at 6, 24 or 72 hpi with an adjusted p-value of <0.05 are shown.

Desiree – transcription factors

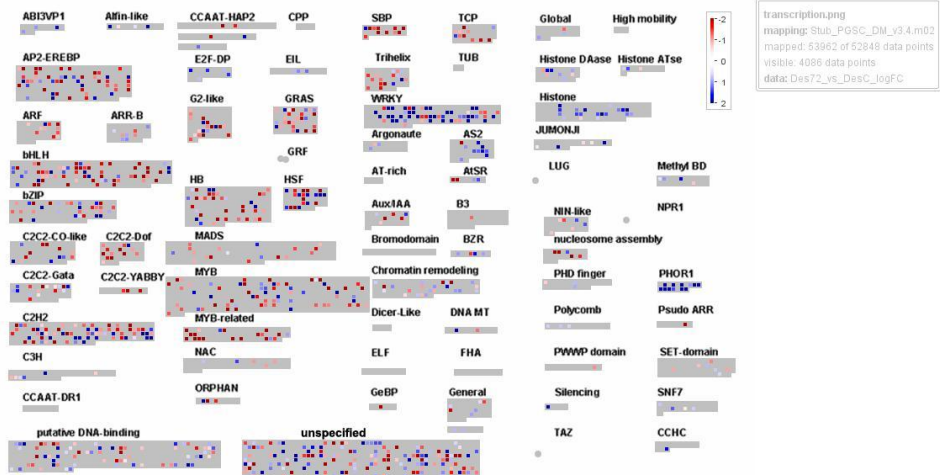
6 h



24 h

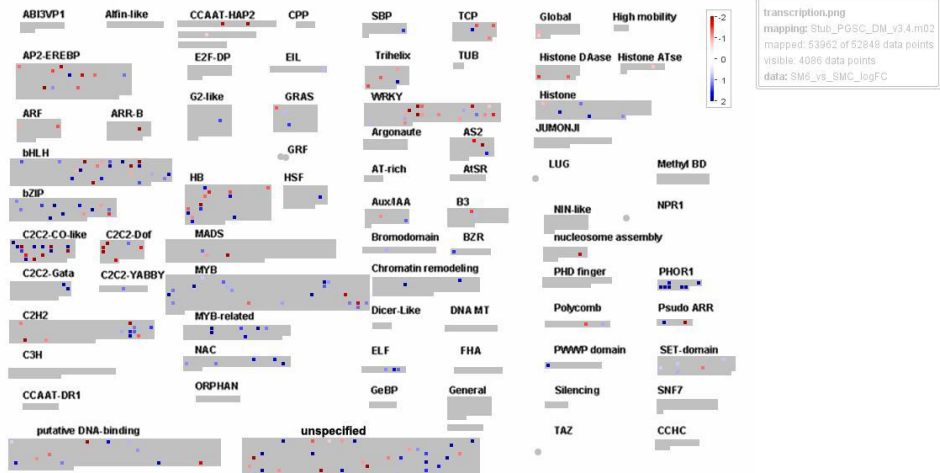


72 h

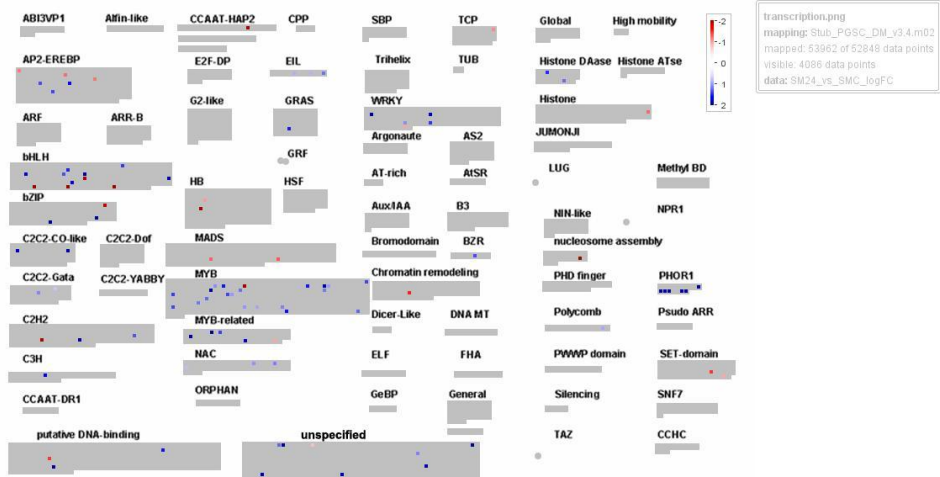


Sarpo Mira – transcription factors

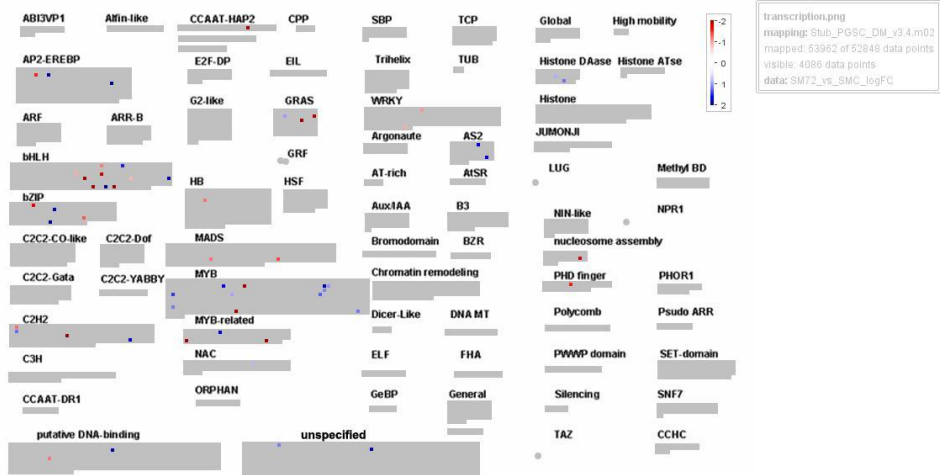
6 h



24 h

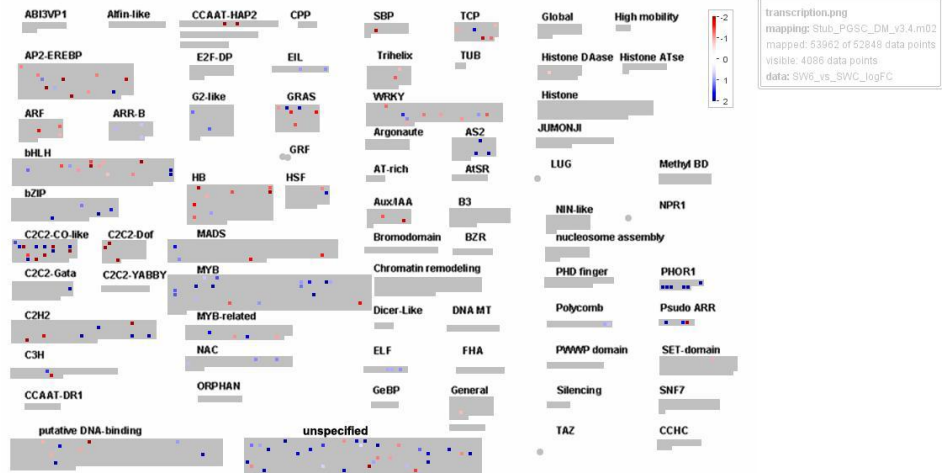


72 h

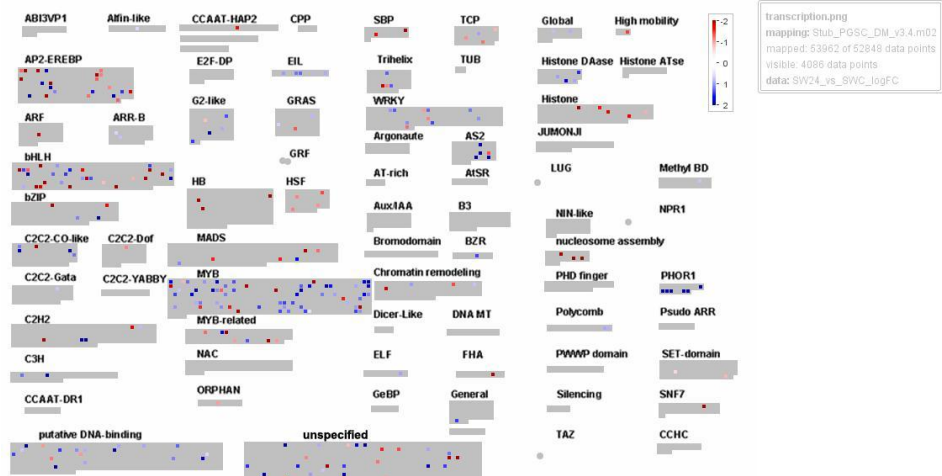


SW-1015 – transcription factors

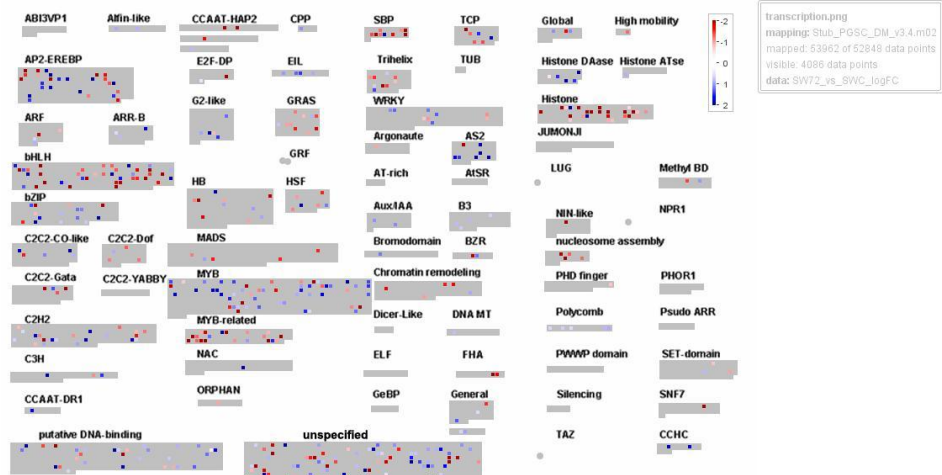
6 h



24 h



72 h



Desiree – hormones and signalling

6hpi

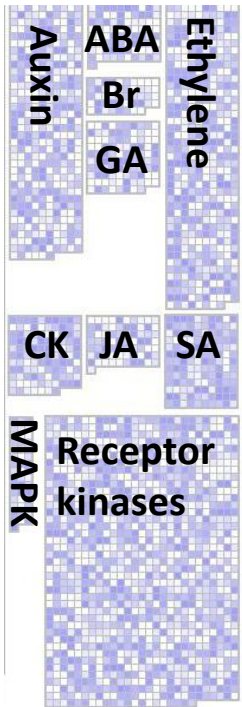
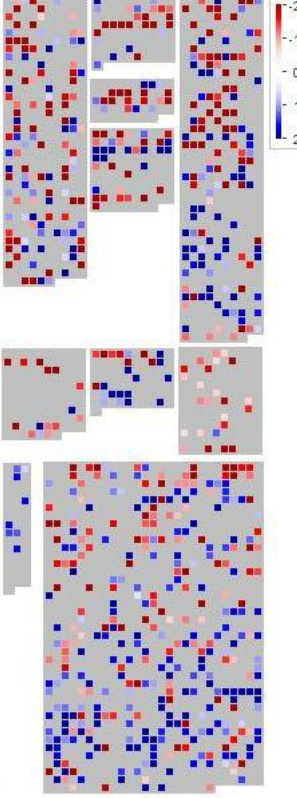
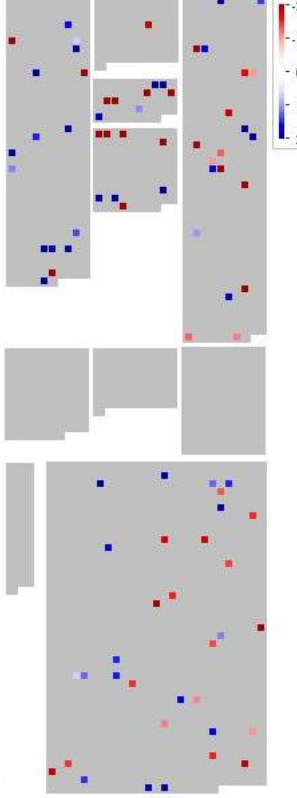
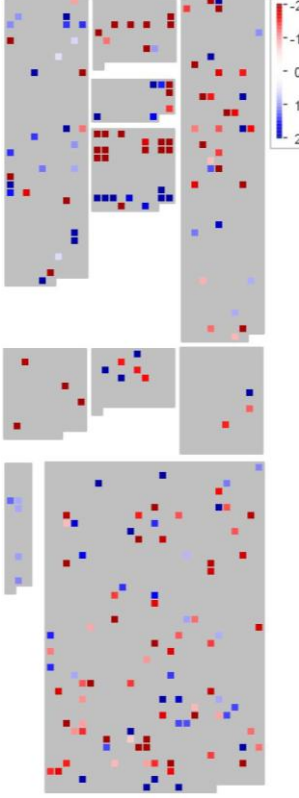
24hpi

72hpi

Regulation_overview.png
mapping: Stub_PGSC_DM_v3.4.m02
mapped: 53962 of 52848 data points
visible: 12202 data points
data: Des6_vs_DesC_logFC

Regulation_overview.png
mapping: Stub_PGSC_DM_v3.4.m02
mapped: 53962 of 52848 data points
visible: 12202 data points
data: Des24_vs_DesC_logFC

Regulation_overview.png
mapping: Stub_PGSC_DM_v3.4.m02
mapped: 53962 of 52848 data points
visible: 12202 data points
data: Des72_vs_DesC_logFC



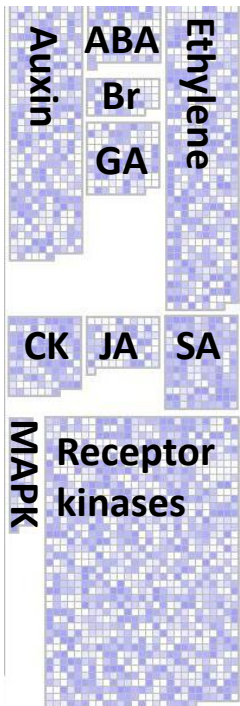
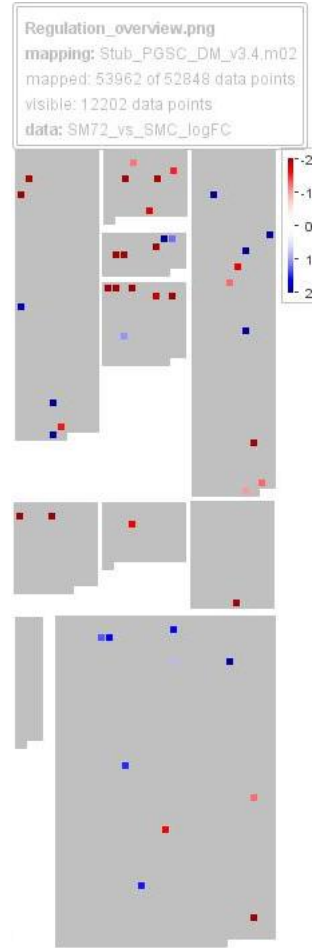
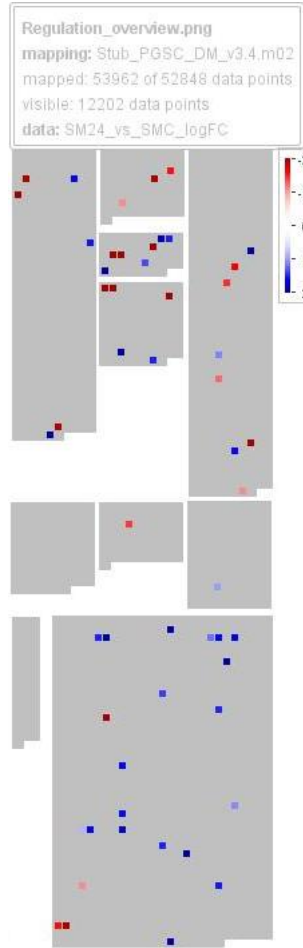
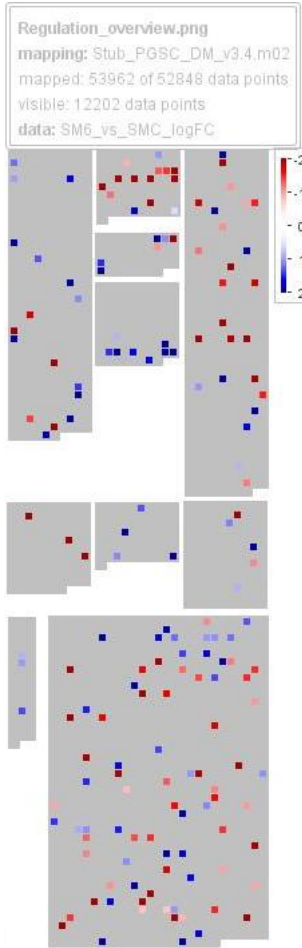
ABA, abscisic acid
BR, brassinosteroids
GA, gibberellic acid
CK, cytokinin
JA, jasmonic acid
SA, salicylic acid
MAPK, Mitogen-Activated Protein Kinase

Sarpo Mira – hormones and signalling

6hpi

24hpi

72hpi



ABA, abscisic acid
 BR, brassinosteroids
 GA, giberellic acid
 CK, cytokinin
 JA, jasmonic acid
 SA, salicylic acid
 MAPK, Mitogen-Activated Protein Kinase