

Supplemental Figures

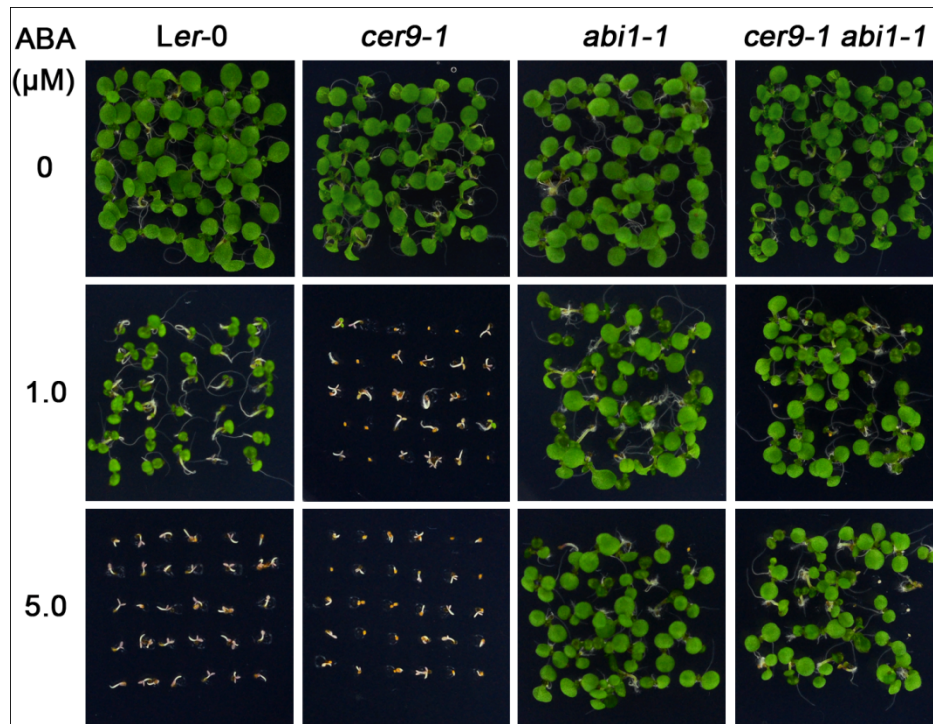


Figure S1. Sensitivity of the *cer9-1 abi1-1* double mutant to ABA.

Ler-0 (wild type), *cer9-1*, *abi1-1* and *cer9-1 abi1-1* seeds were sown onto $\frac{1}{2}$ MS agar medium supplemented with 0, 1.0, or 5.0 μ M ABA. Representative pictures show the morphology of seedlings 7 days after being sown on the medium plates.

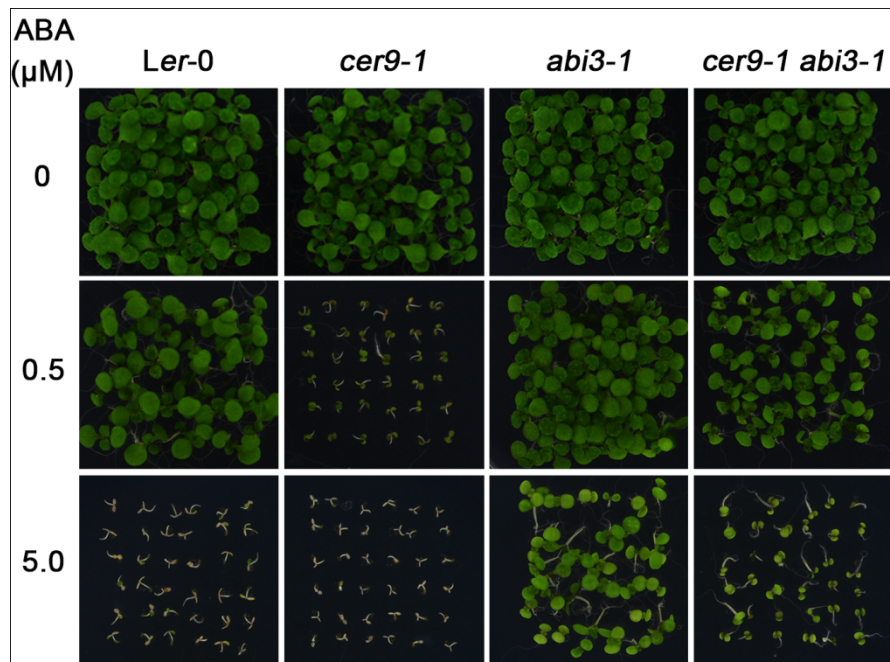


Figure S2. Sensitivity of the *cer9-1 abi3-1* double mutant to ABA.

Ler-0 (wild type), *cer9-1*, *abi3-1* and *cer9-1 abi3-1* seeds were sown onto $\frac{1}{2}$ MS agar medium supplemented with 0, 0.5, or 5.0 μM ABA. Representative pictures show the morphology of seedlings 7 days after being sown on the medium plates.

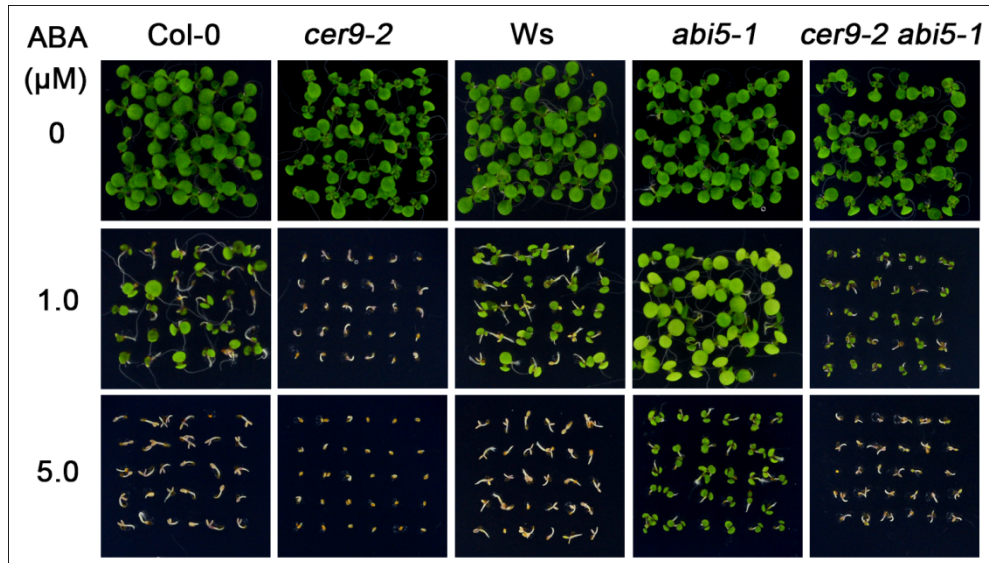


Figure S3. Sensitivity of the *cer9-2 abi5-1* double mutant to ABA.

Col-0 (wild type), Ws (wild type), *cer9-2*, *abi5-1* and *cer9-2 abi5-1* seeds were sown onto $\frac{1}{2}$ MS agar medium supplemented with 0, 1.0, or 5.0 μM ABA. Representative pictures show the morphology of seedlings 7 days after being sown on the medium plates.

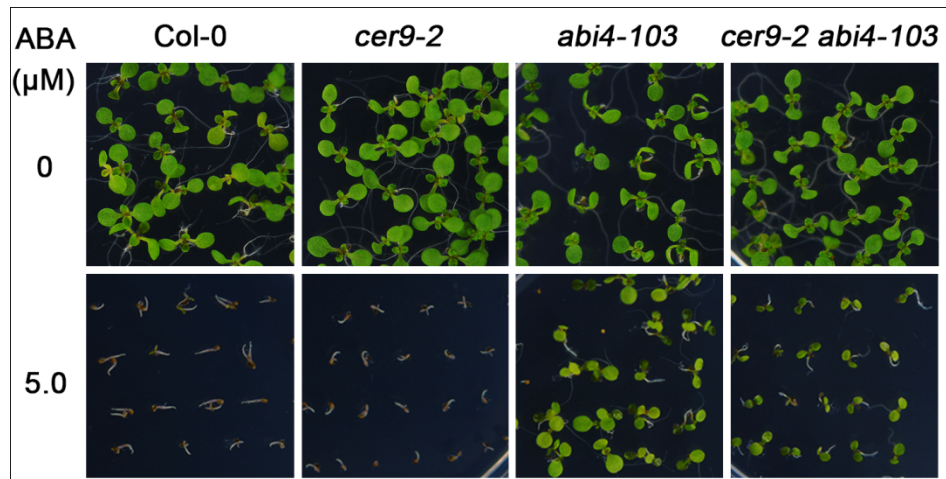


Figure S4. Sensitivity of the *cer9-2 abi4-103* double mutant to ABA.

Col-0 (wild type), *cer9-2*, *abi4-103* and *cer9-2 abi4-103* seeds were sown onto $\frac{1}{2}$ MS medium supplemented with 0 or 5.0 μM ABA. Representative pictures showed the morphology of seedlings 7 days after being sown on the media plates.