

## Supporting Information for

### **Hemiasterline analogues incorporating an aromatic, and heterocyclic type C-terminus: design, synthesis and biological evaluation**

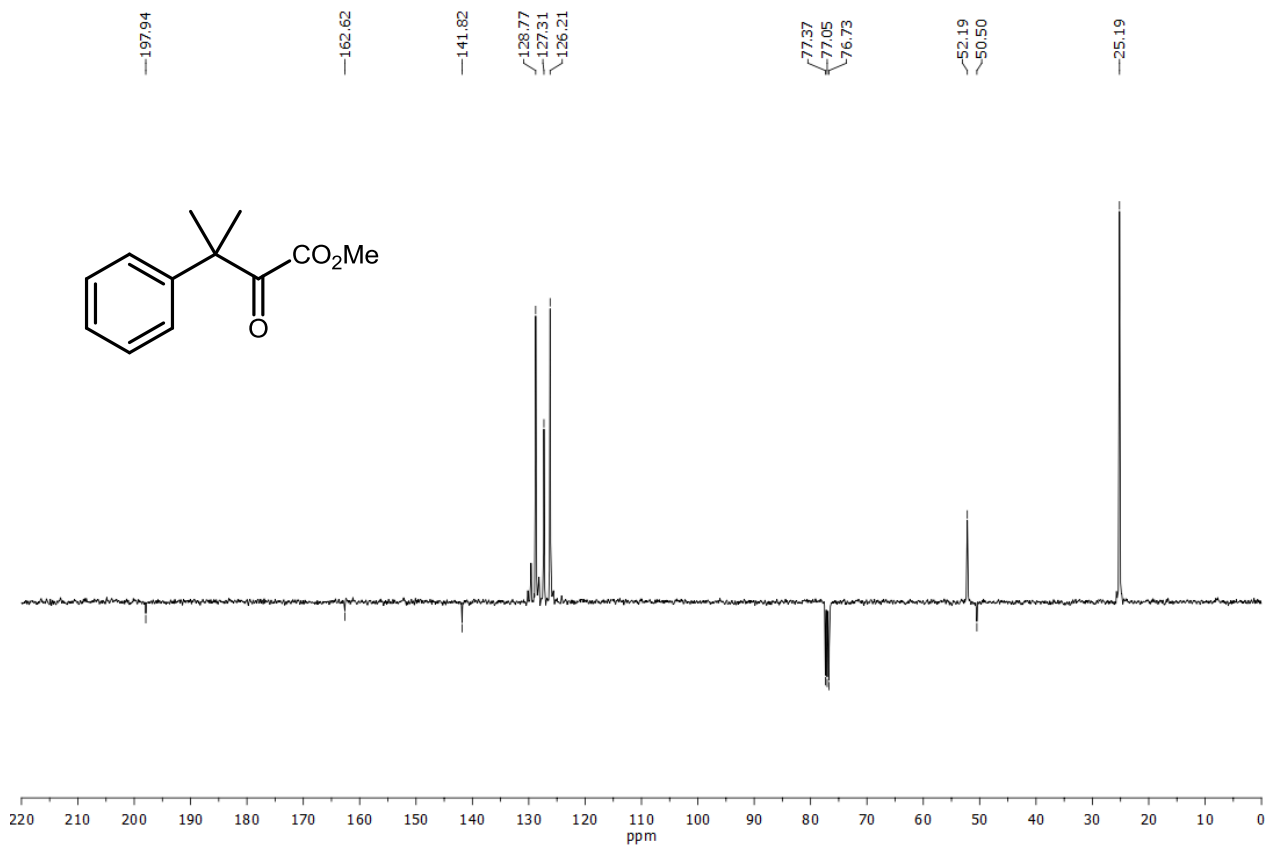
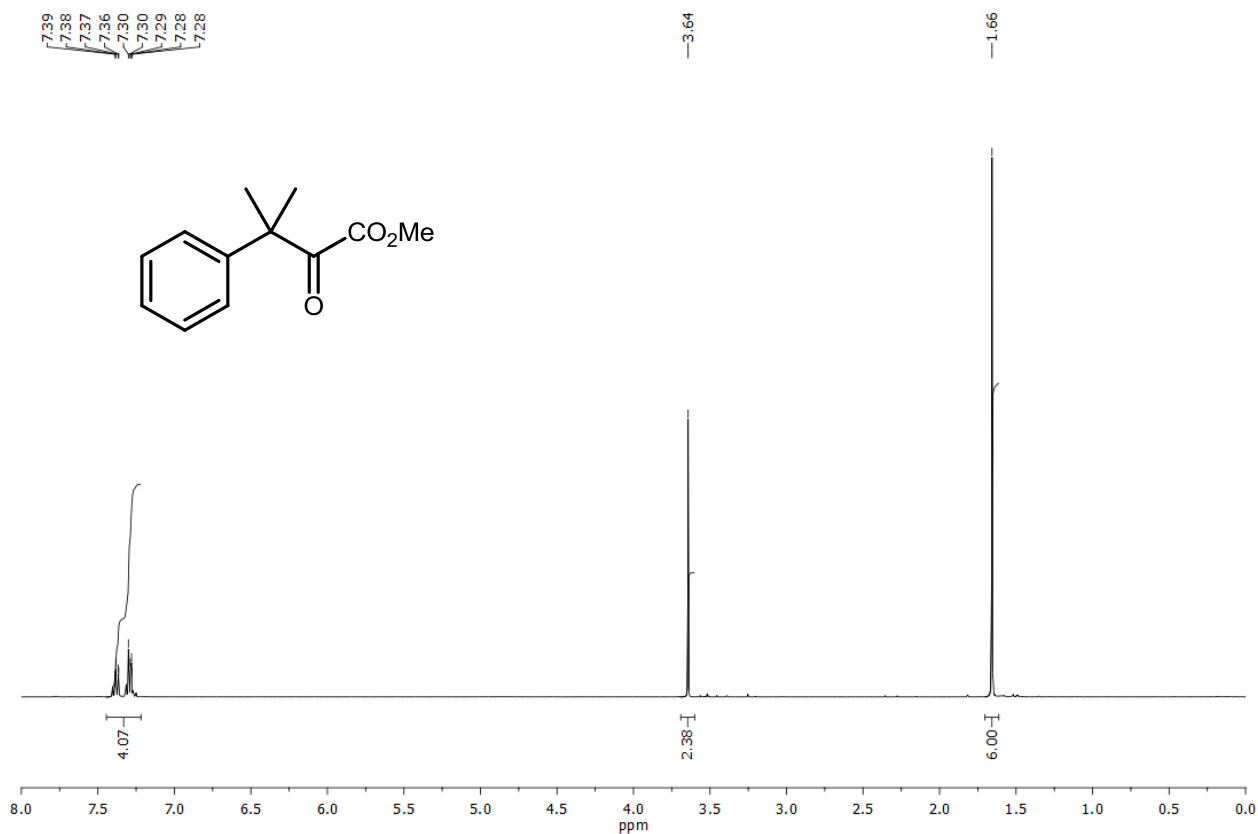
*Giordano Lesma,\*<sup>a</sup> Alessandro Sacchetti,\*<sup>b</sup> Rouli Bai,<sup>c</sup> Giuseppe Basso,<sup>d</sup> Roberta Bortolozzi,<sup>d</sup>  
Ernest Hamel,<sup>c</sup> Alessandra Silvani,\*<sup>a</sup> Nadia Vaiana,<sup>a</sup> and Giampietro Viola<sup>d</sup>*

*<sup>a</sup>Università di Milano, Dipartimento di Chimica, via Golgi 19, Milano, 20133, Italy. E-mail: [alessandra.silvani@unimi.it](mailto:alessandra.silvani@unimi.it). <sup>b</sup>Politecnico di Milano, Dipartimento di Chimica, Materiali ed Ing.Chimica 'Giulio Natta', p.zza Leonardo da Vinci 32, Milano, 20133, Italy. E-mail: [alessandro.sacchetti@polimi.it](mailto:alessandro.sacchetti@polimi.it)  
<sup>c</sup>Screening Technologies Branch, Developmental Therapeutics Program, Division of Cancer Treatment and Diagnosis, National Cancer Institute, Frederick National Laboratory for Cancer Research, National Institutes of Health, Frederick, Maryland 21702, USA. <sup>d</sup>Università degli Studi di Padova, Dipartimento di Salute della Donna e del Bambino, via Giustiniani 2, Padova, 35128, Italy.; E-mail: [giampietro.viola.1@unipd.it](mailto:giampietro.viola.1@unipd.it)*

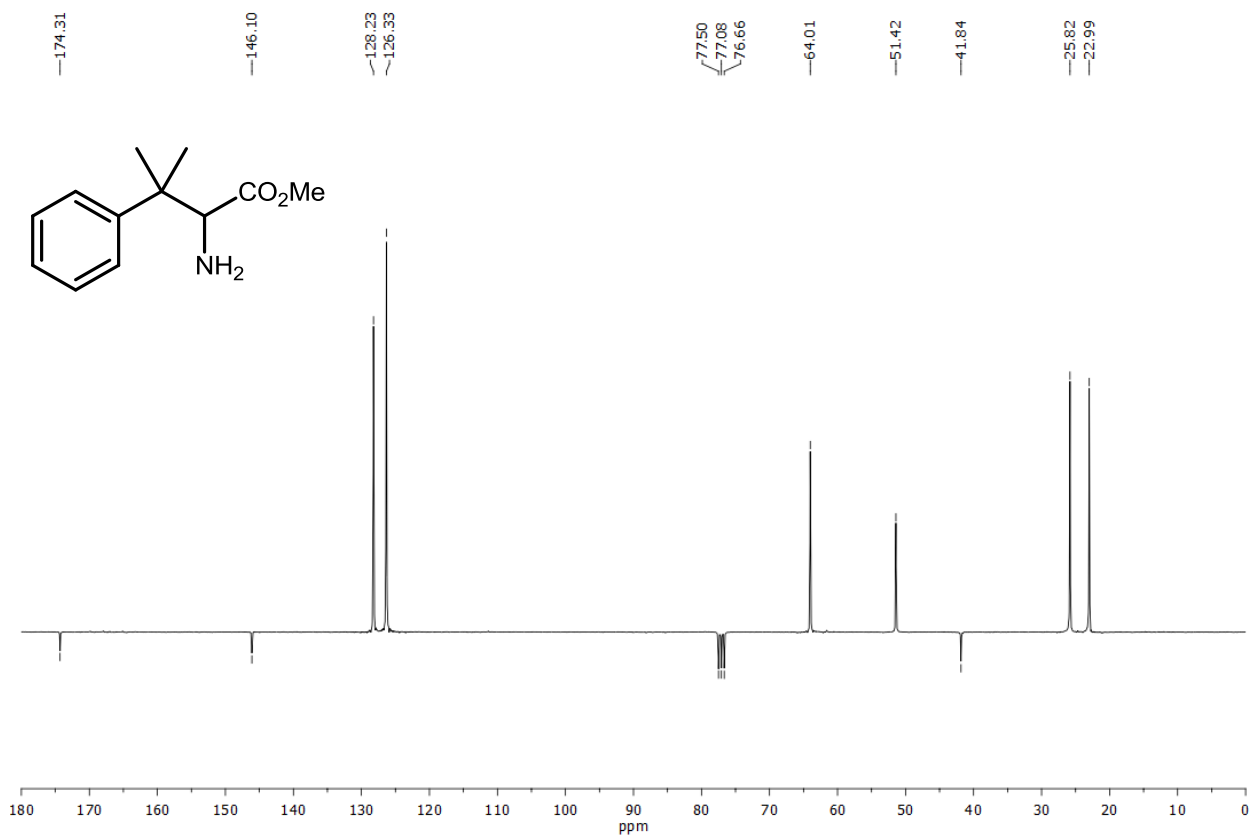
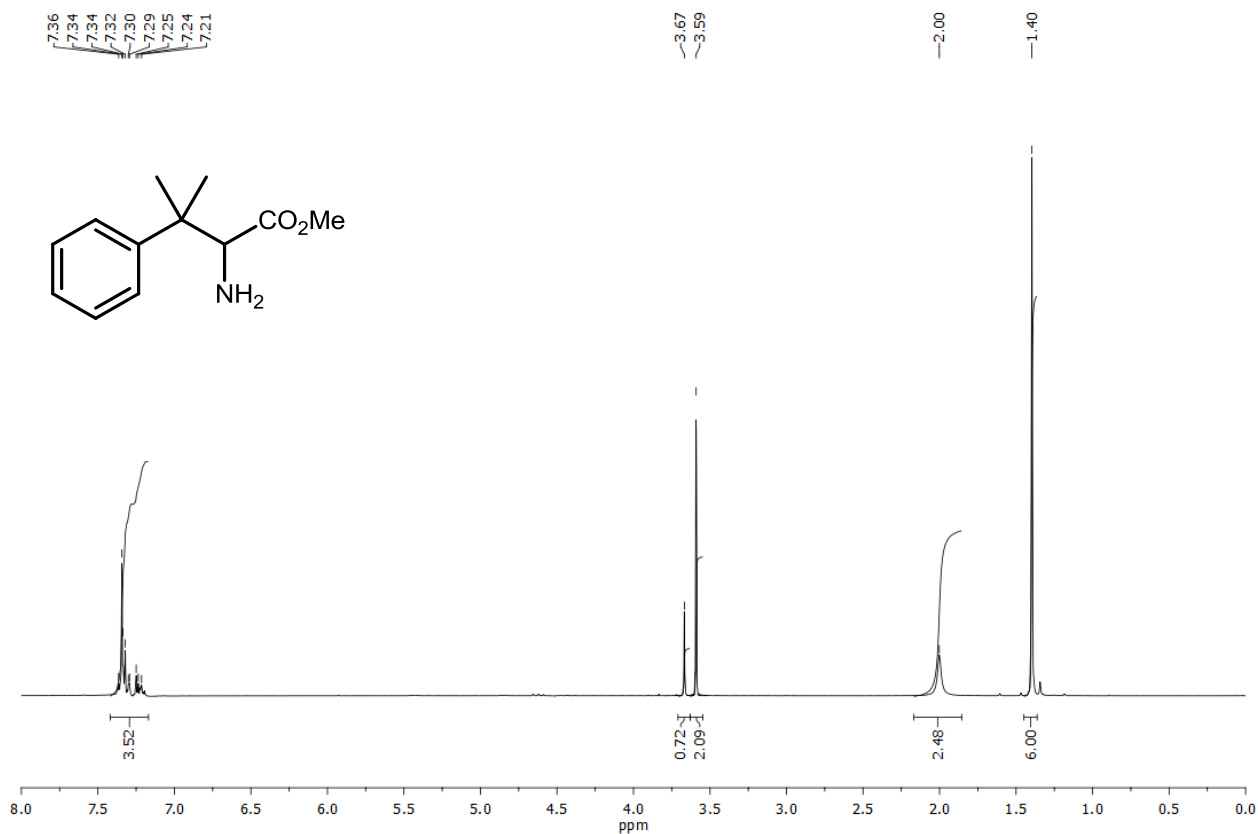
## Table of Contents

NMR spectra of compounds <b>3-36</b>	S2-S35
HPLC for compound <b>12</b>	S36

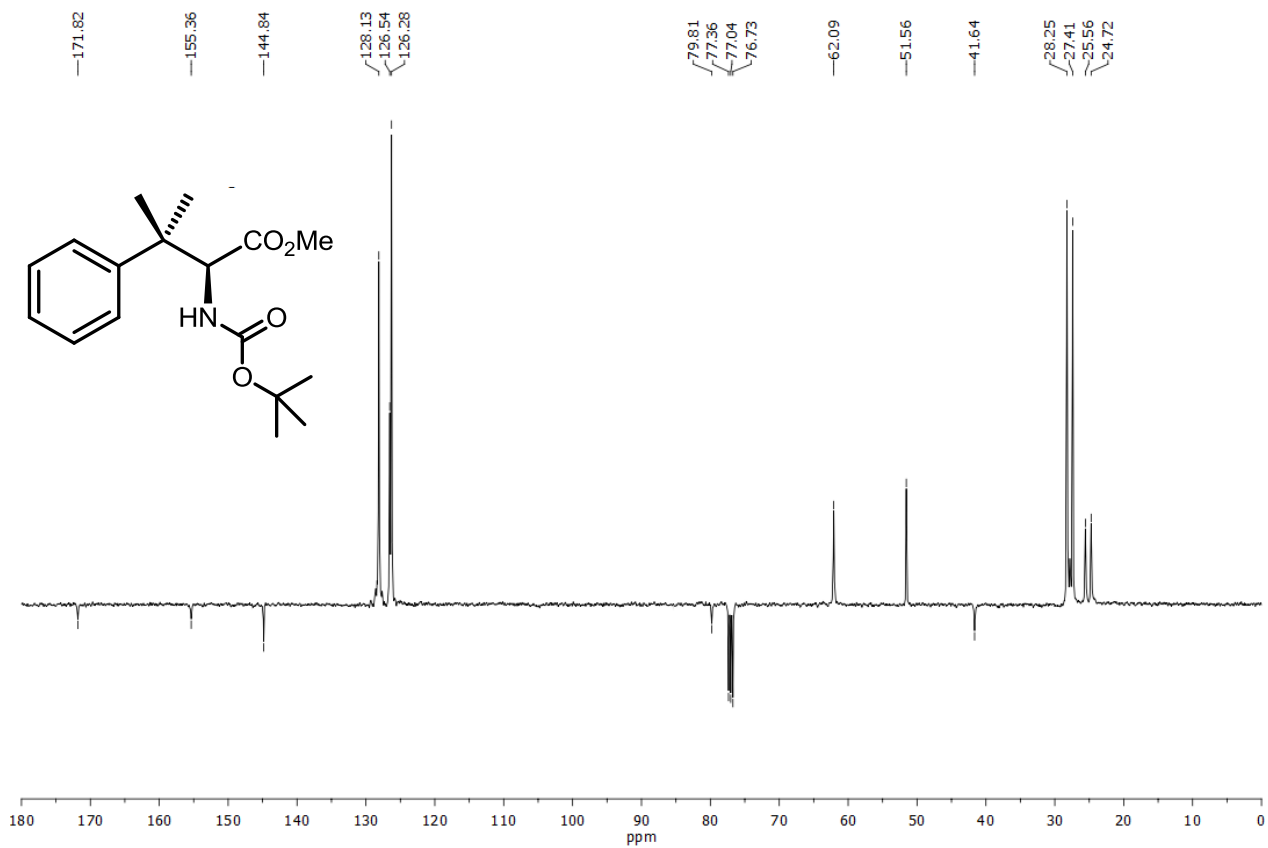
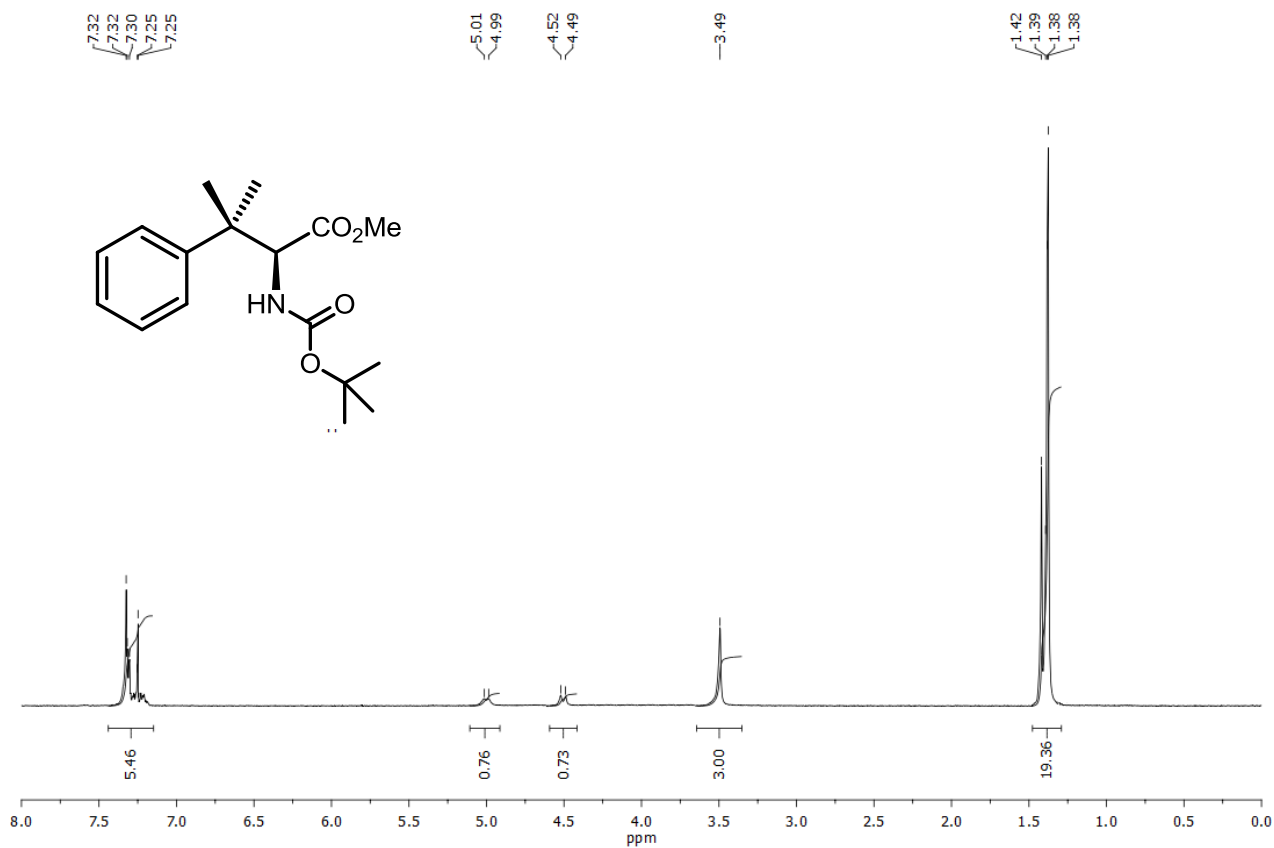
# Compound 10



# Compound 11

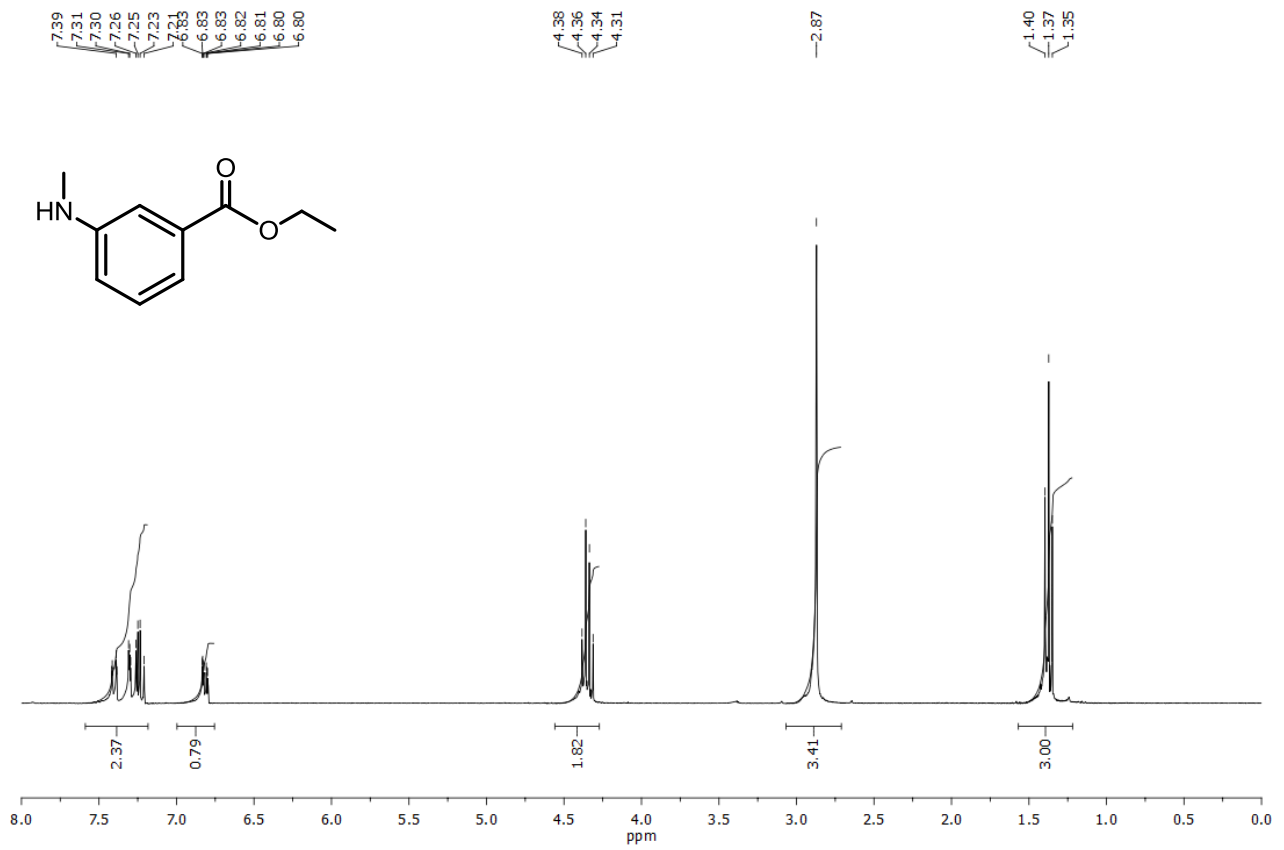


# Compound 12

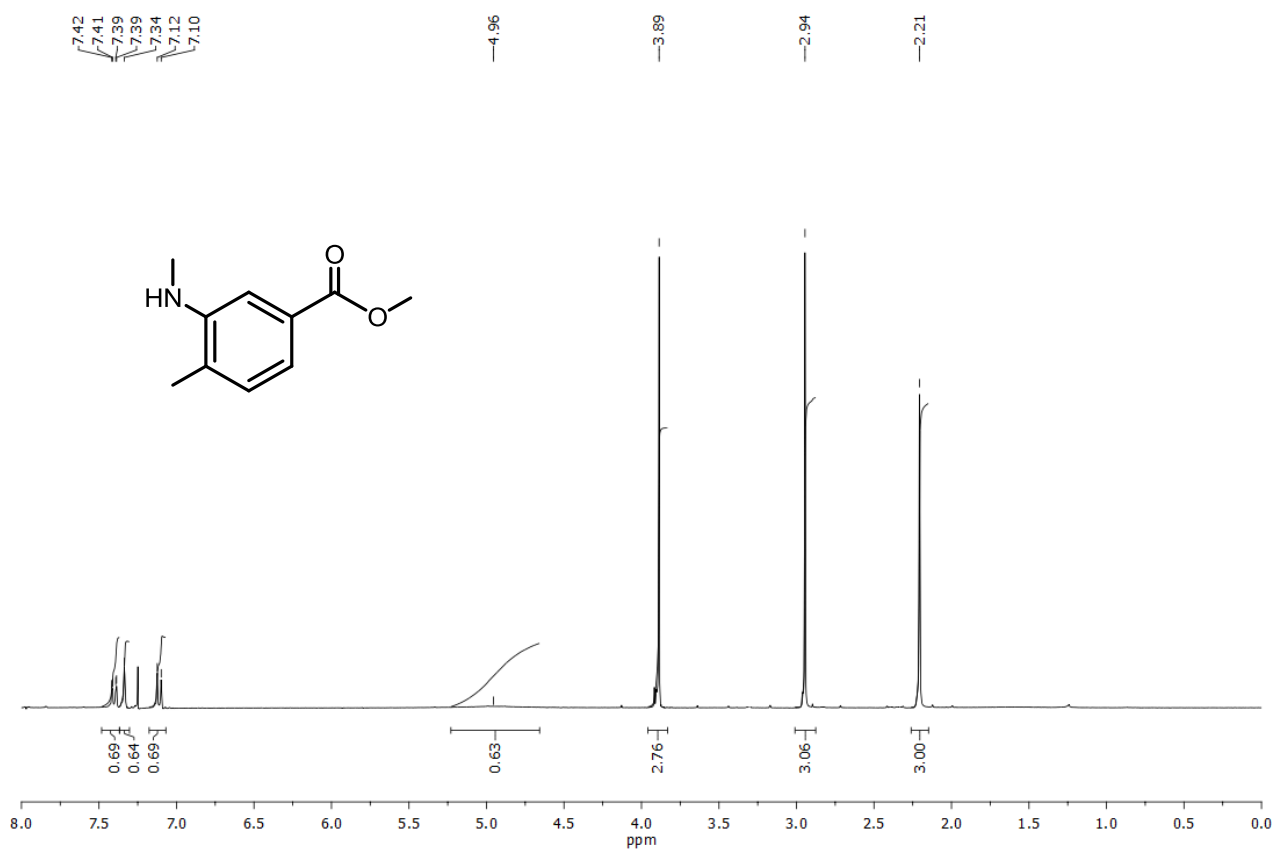




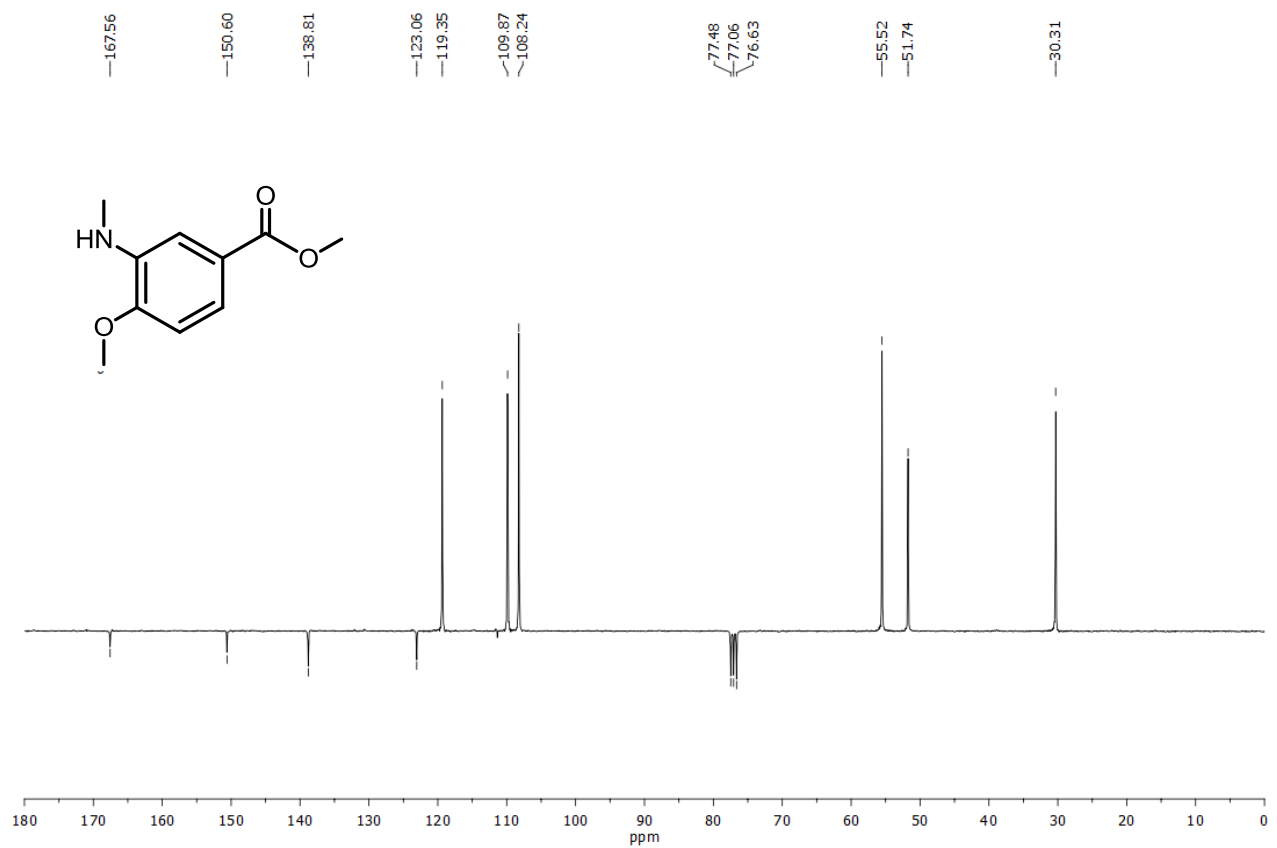
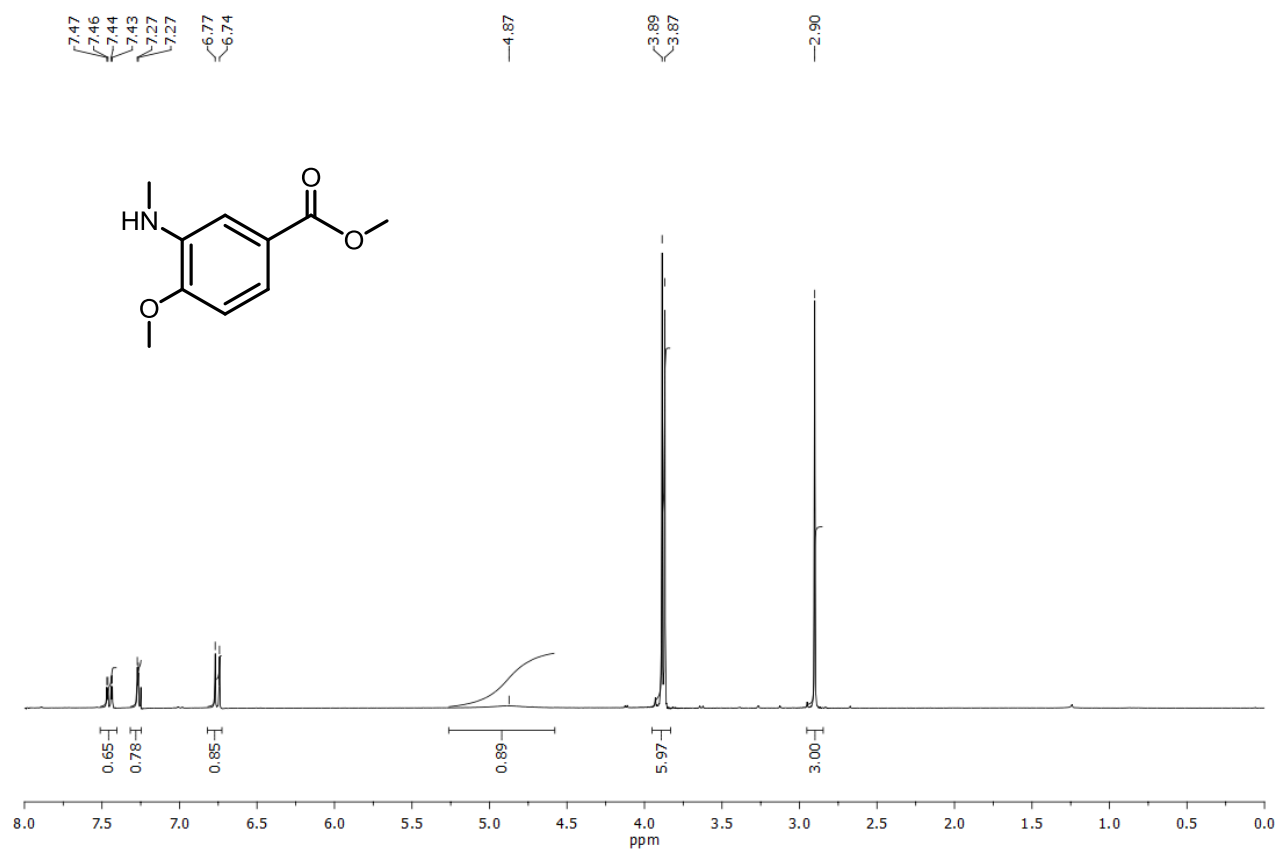
**Compound 13** (*known product*)



# Compound 14

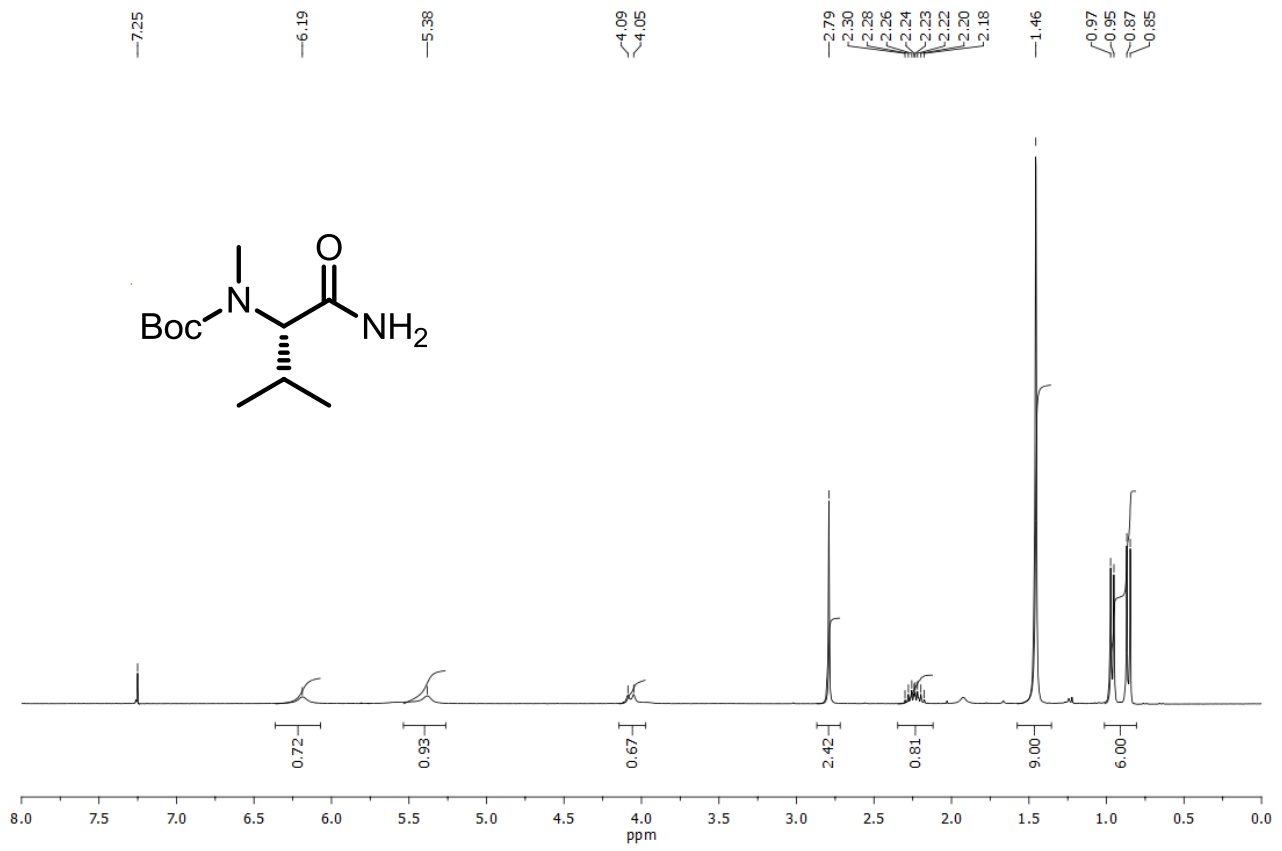


# Compound 15

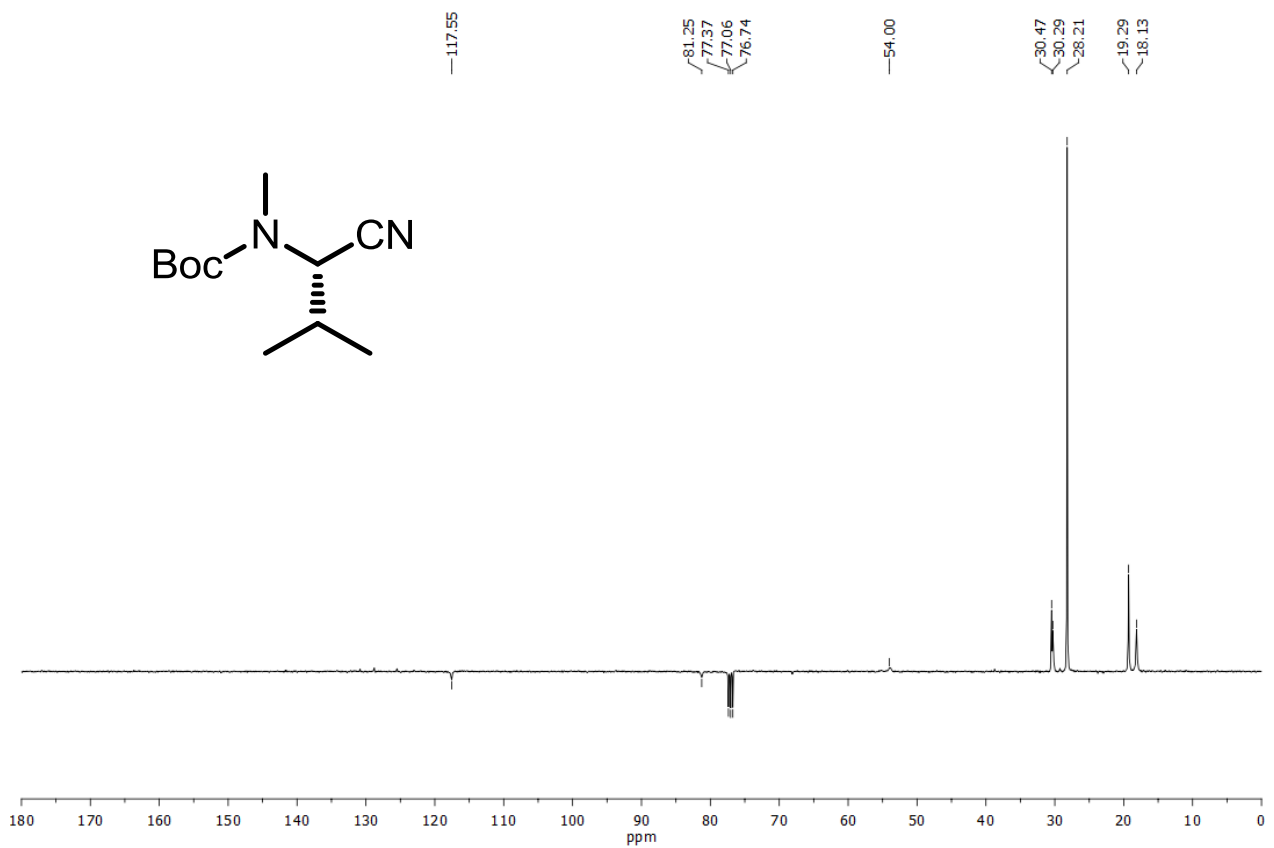
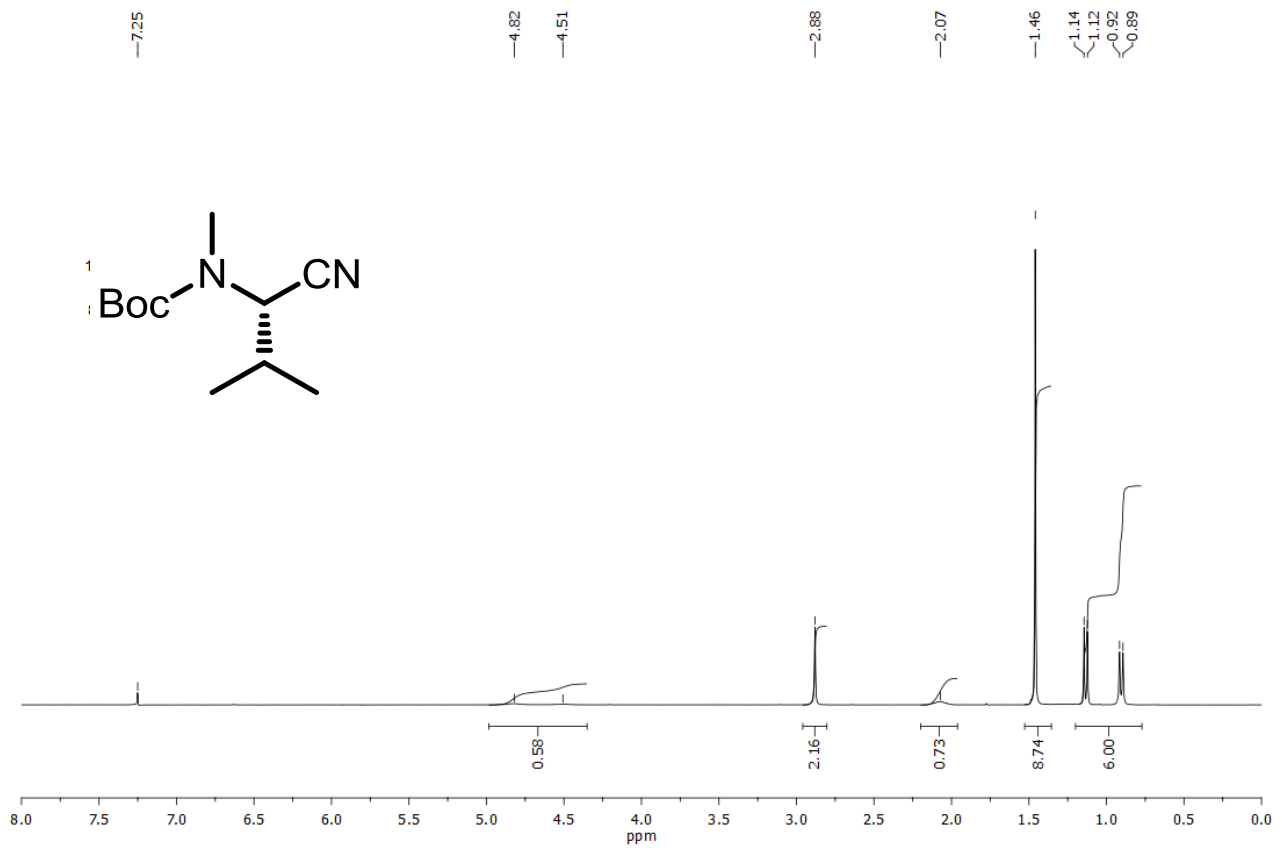




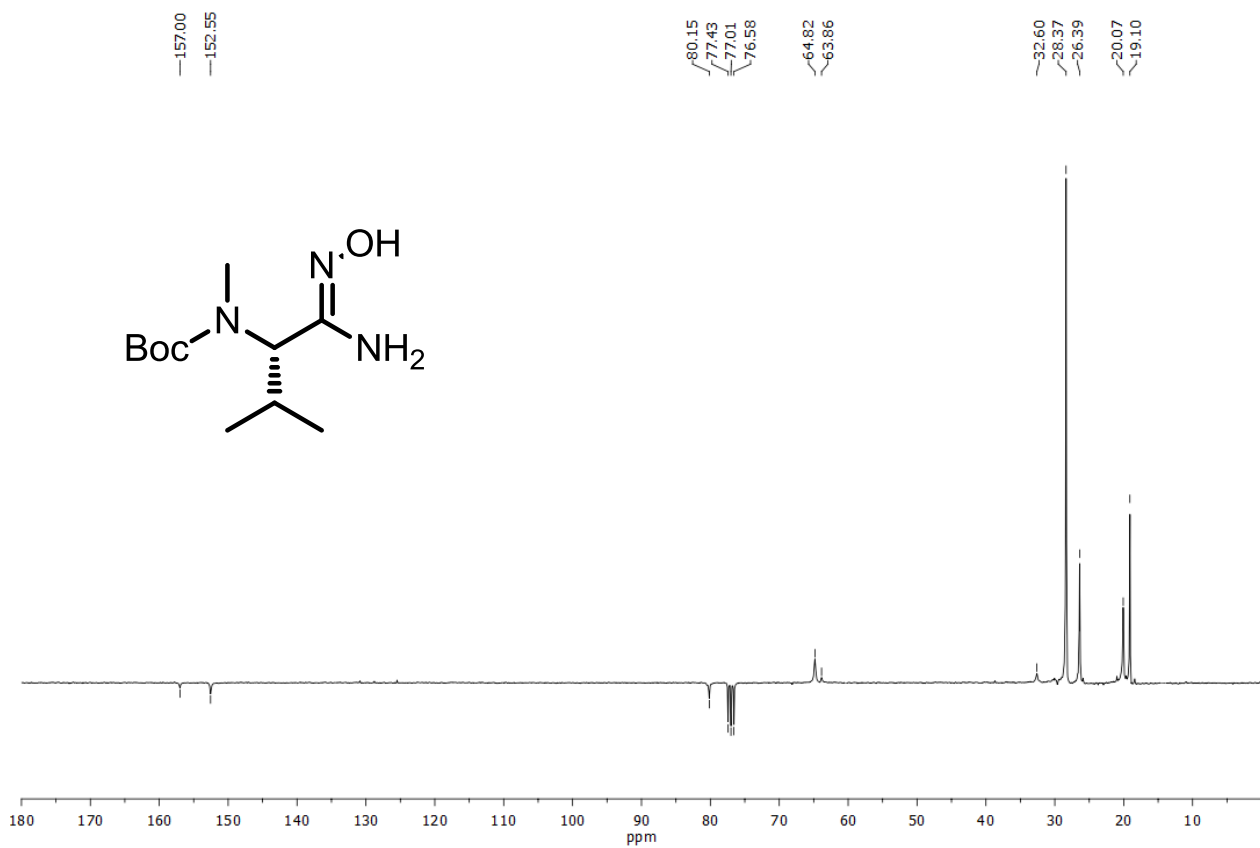
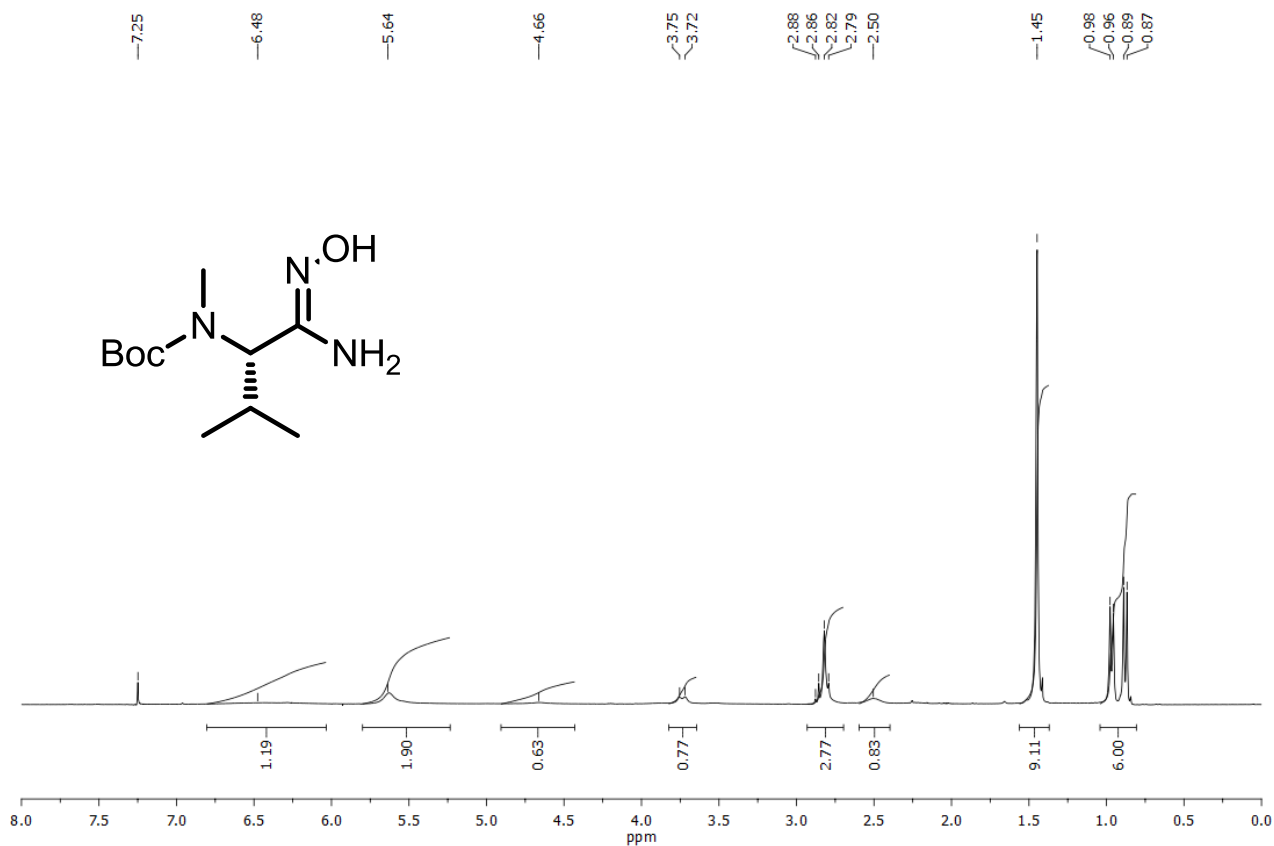
**Compound 16** (*known product*)



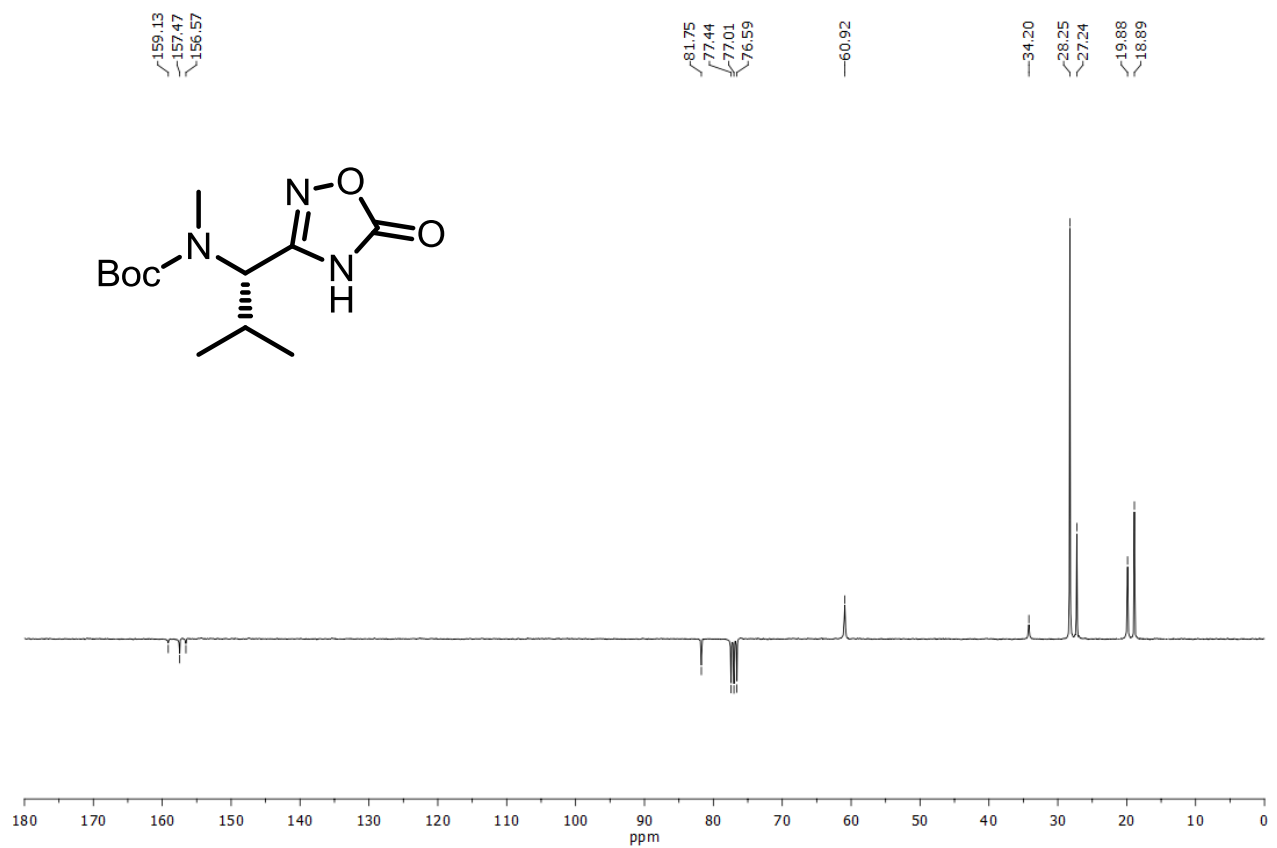
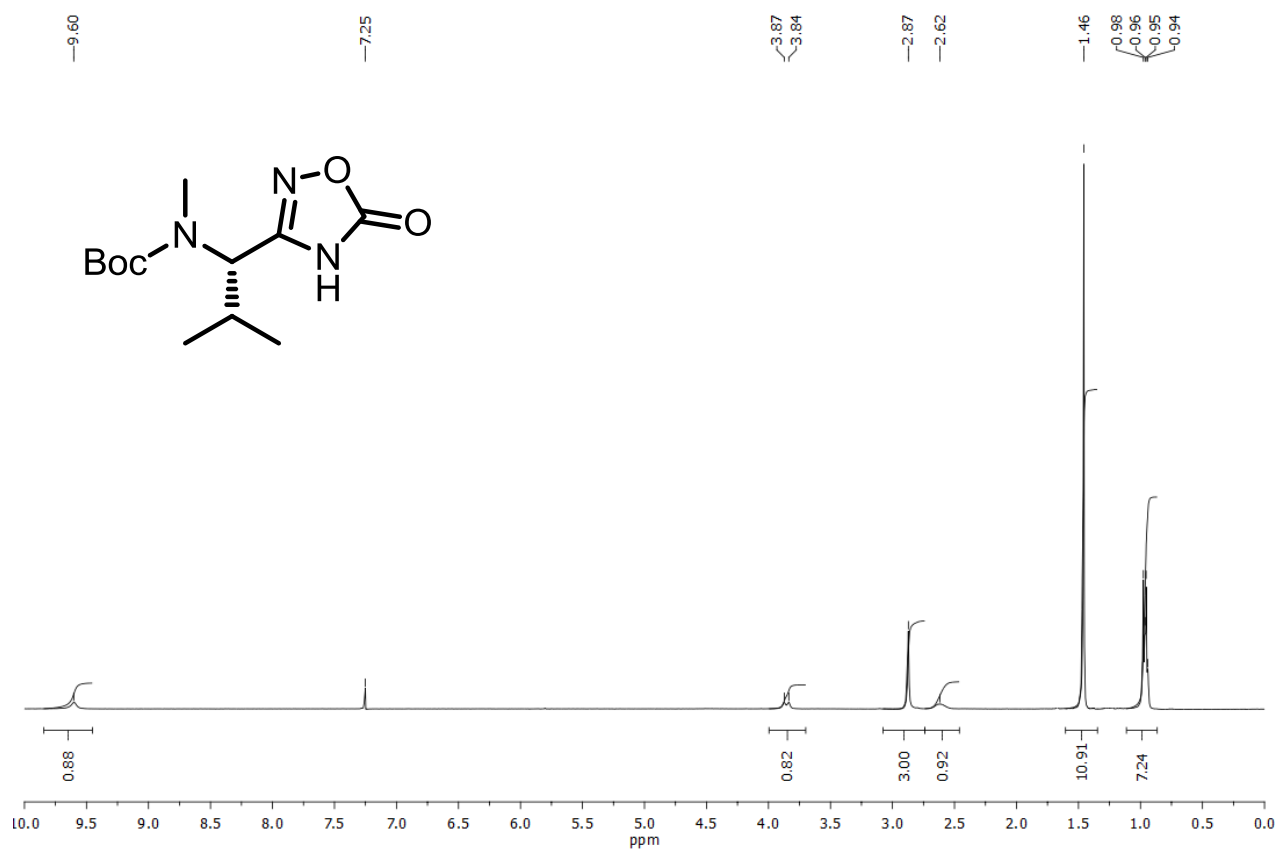
# Compound 17



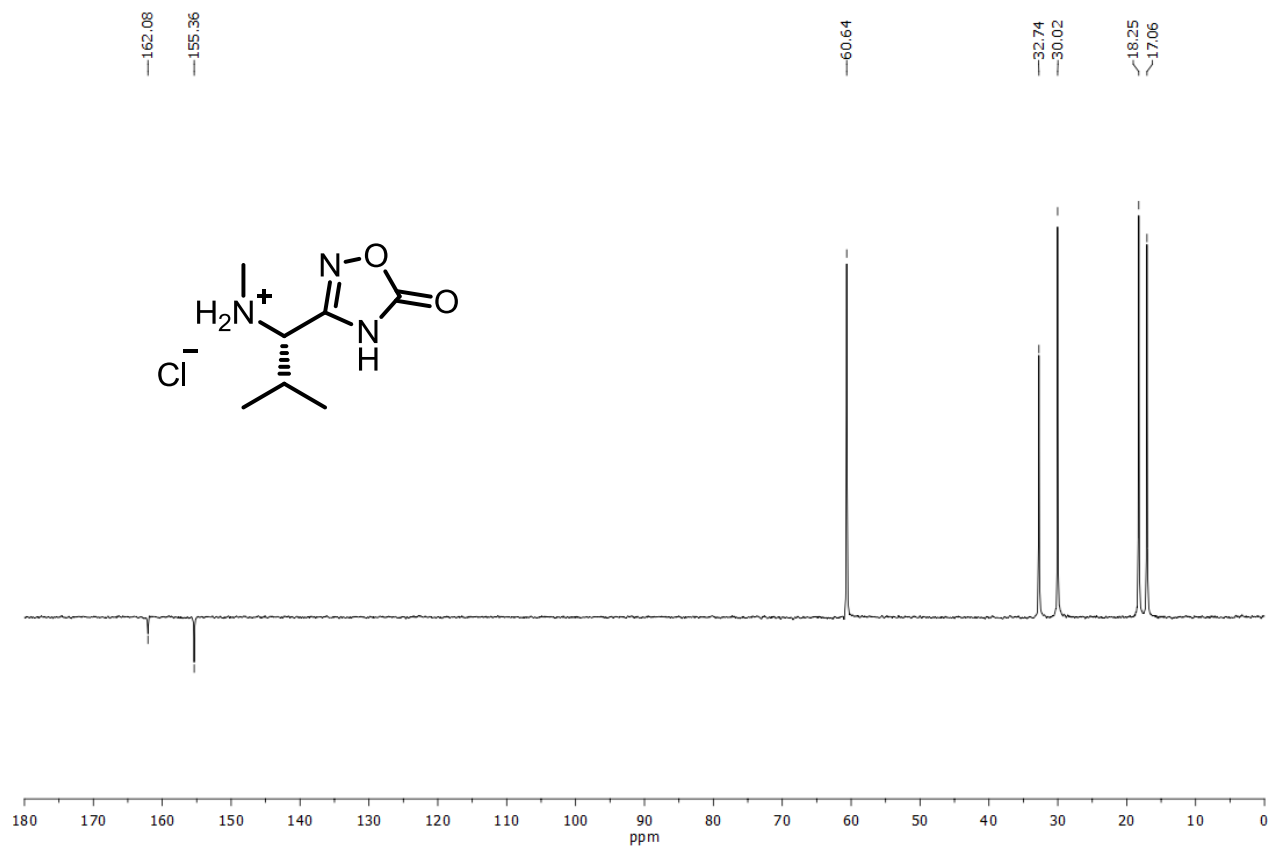
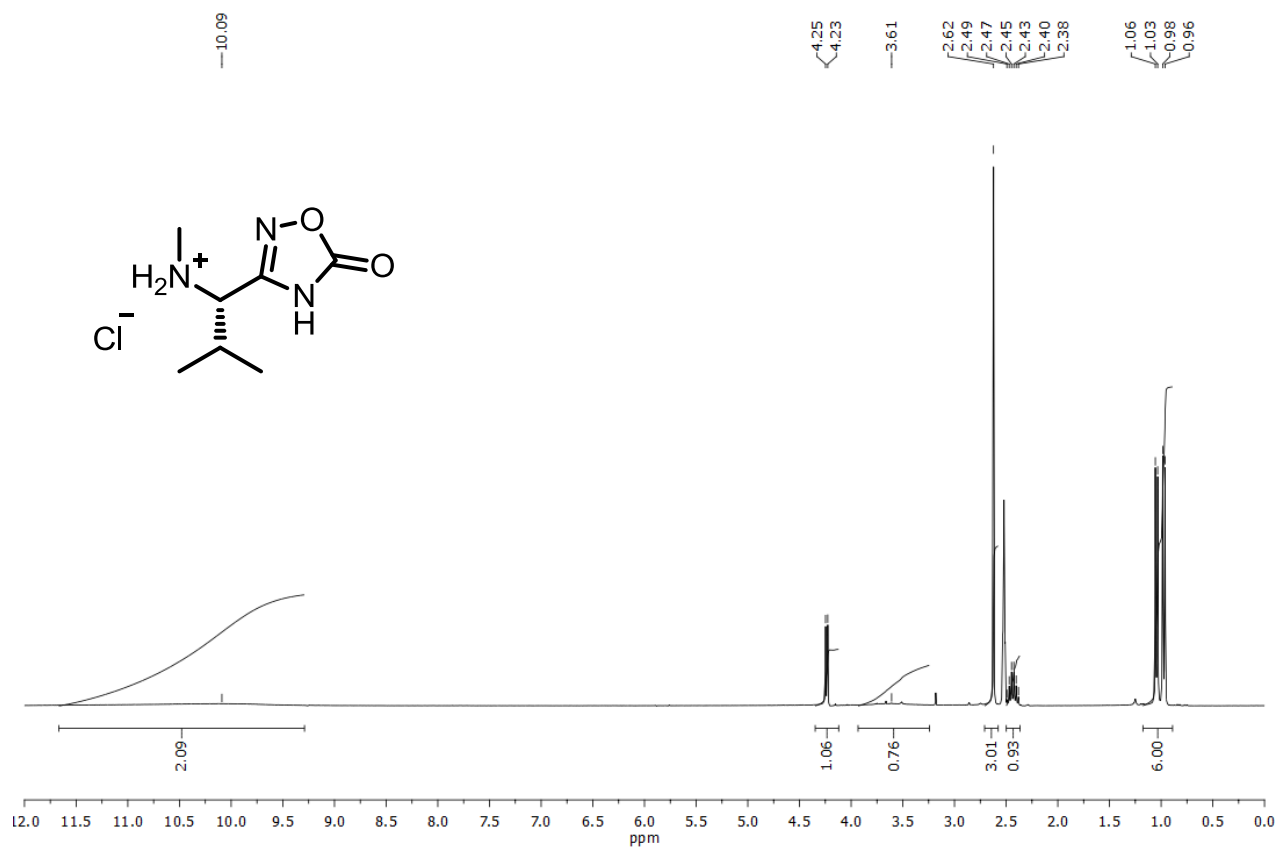
**Compound 18**



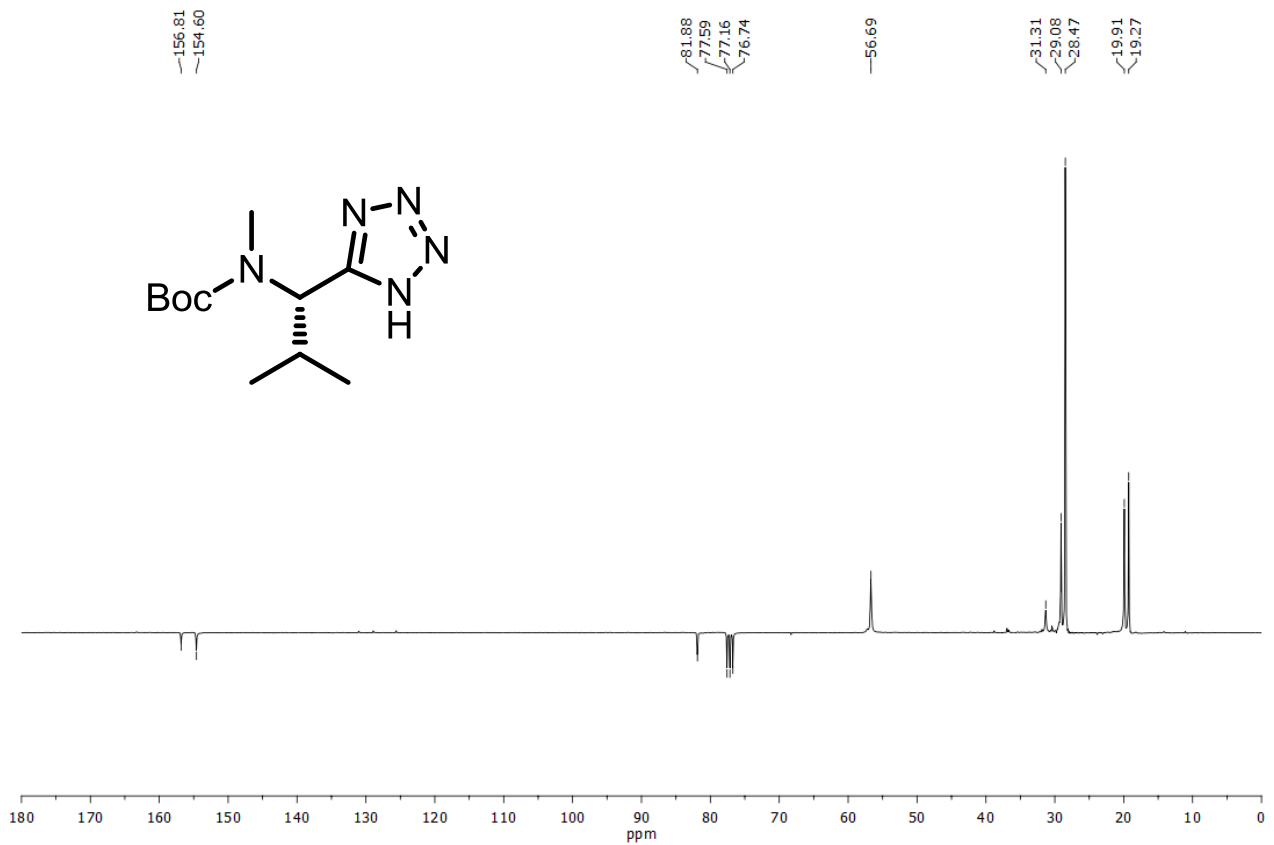
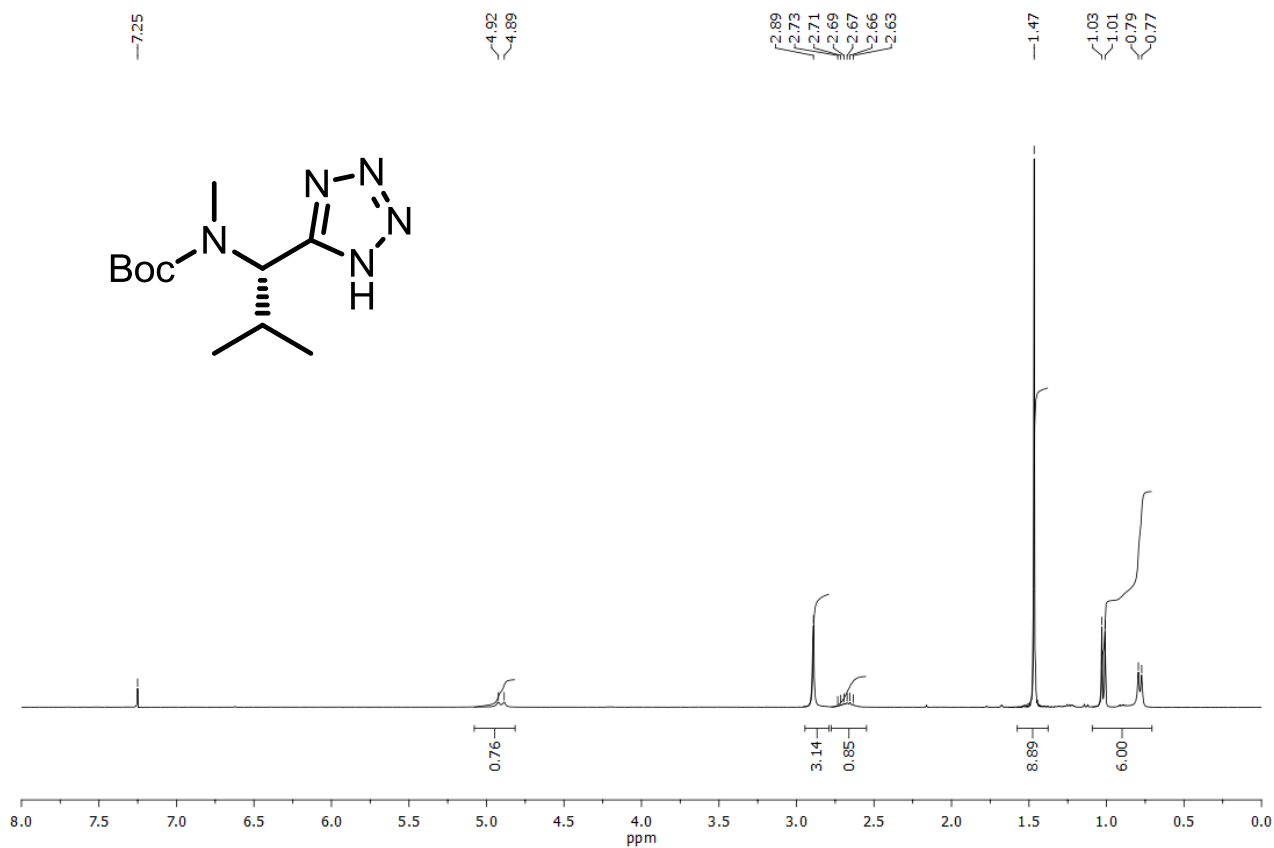
# Compound 19



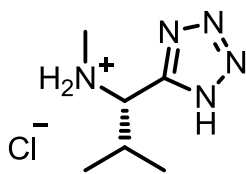
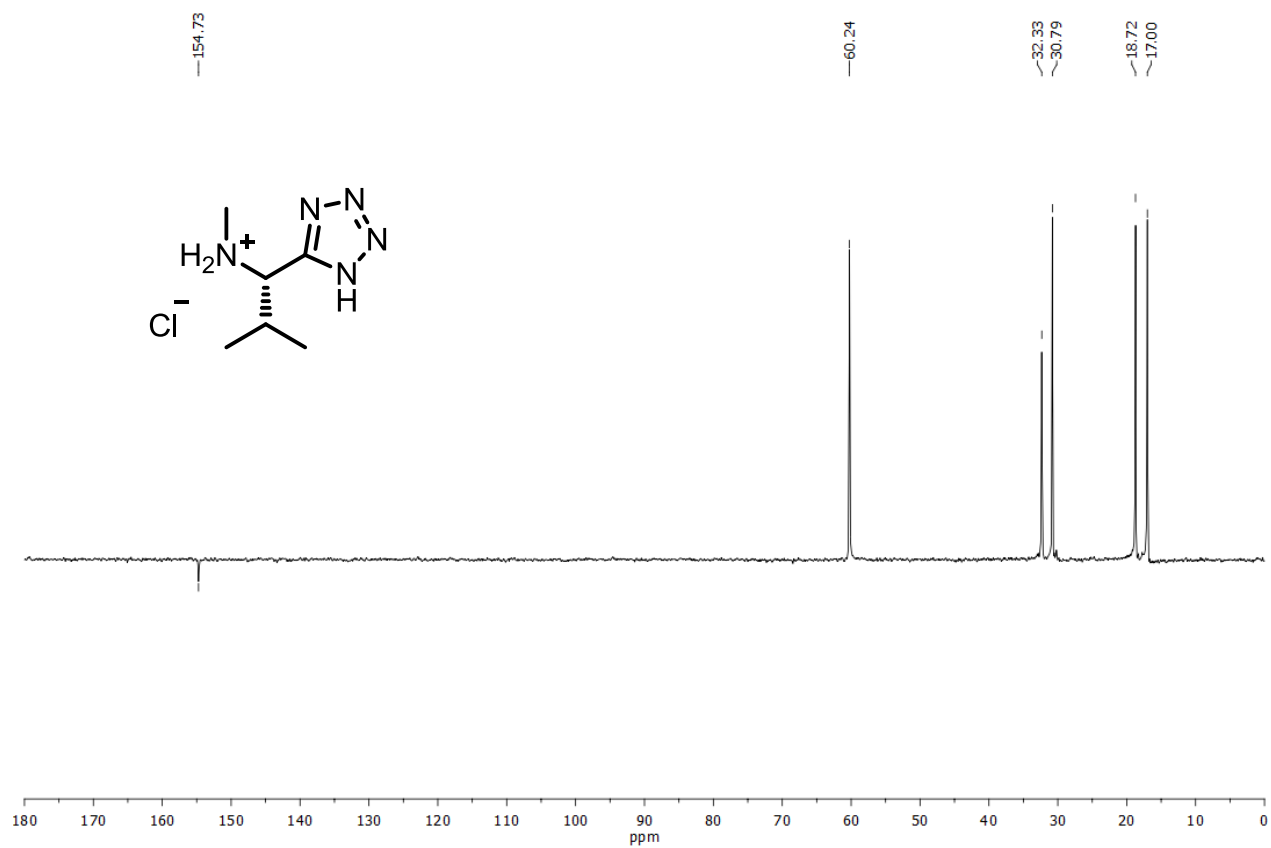
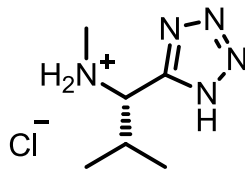
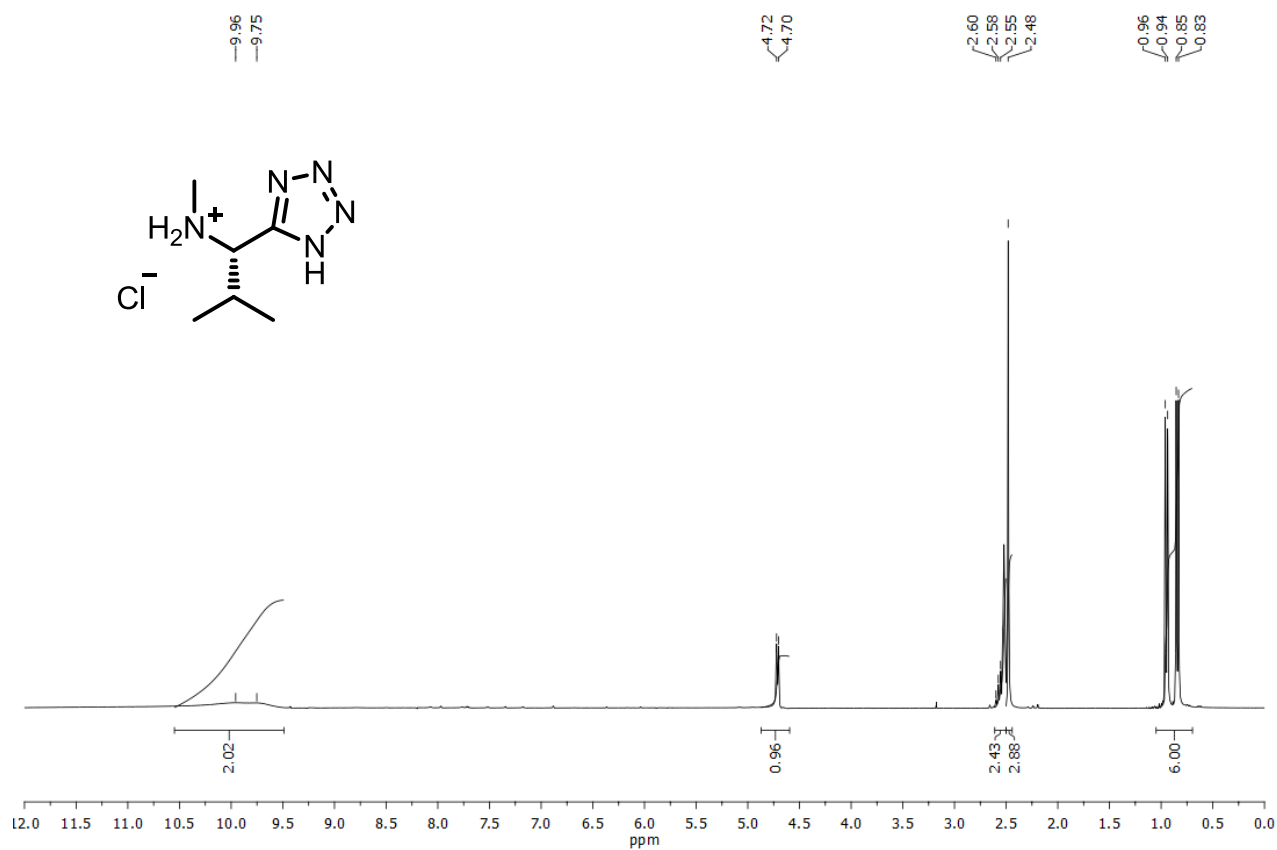
# Compound 20



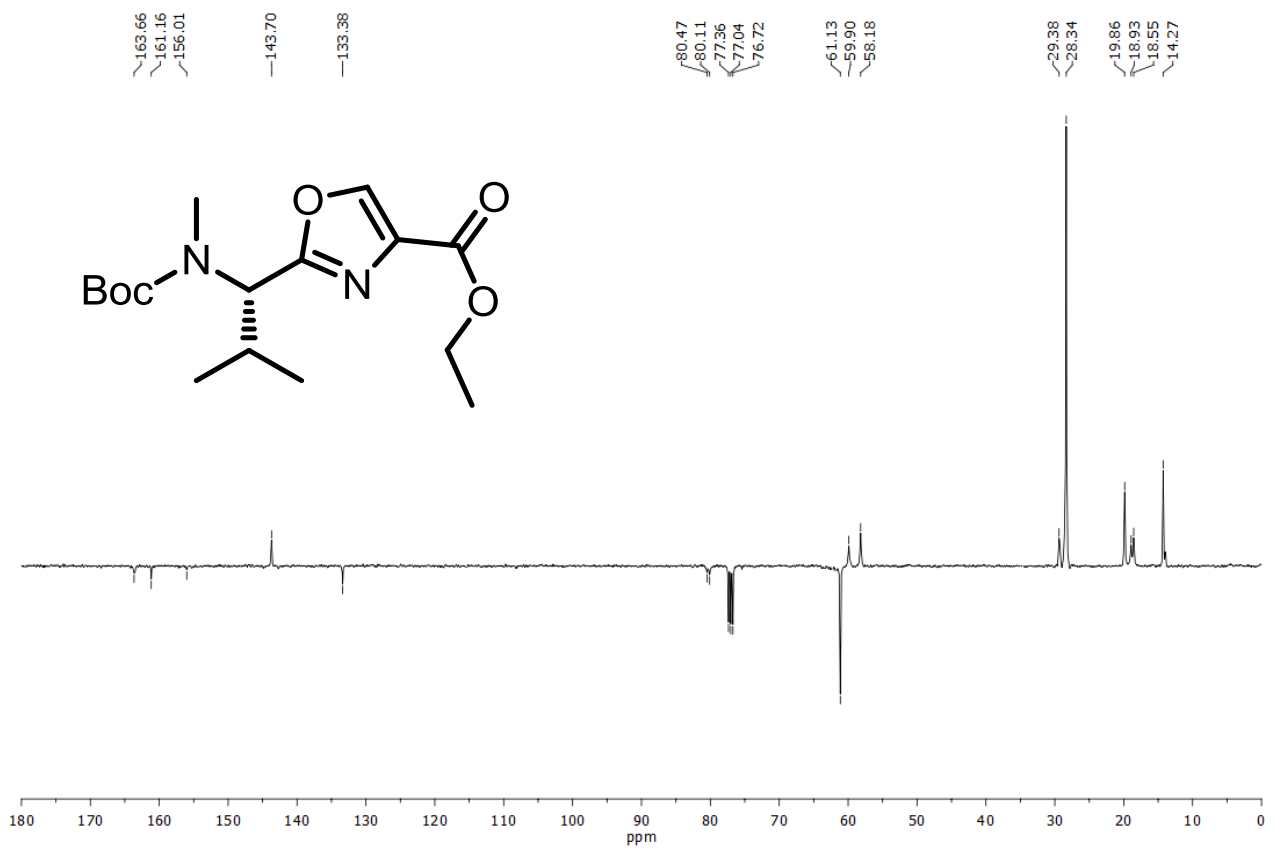
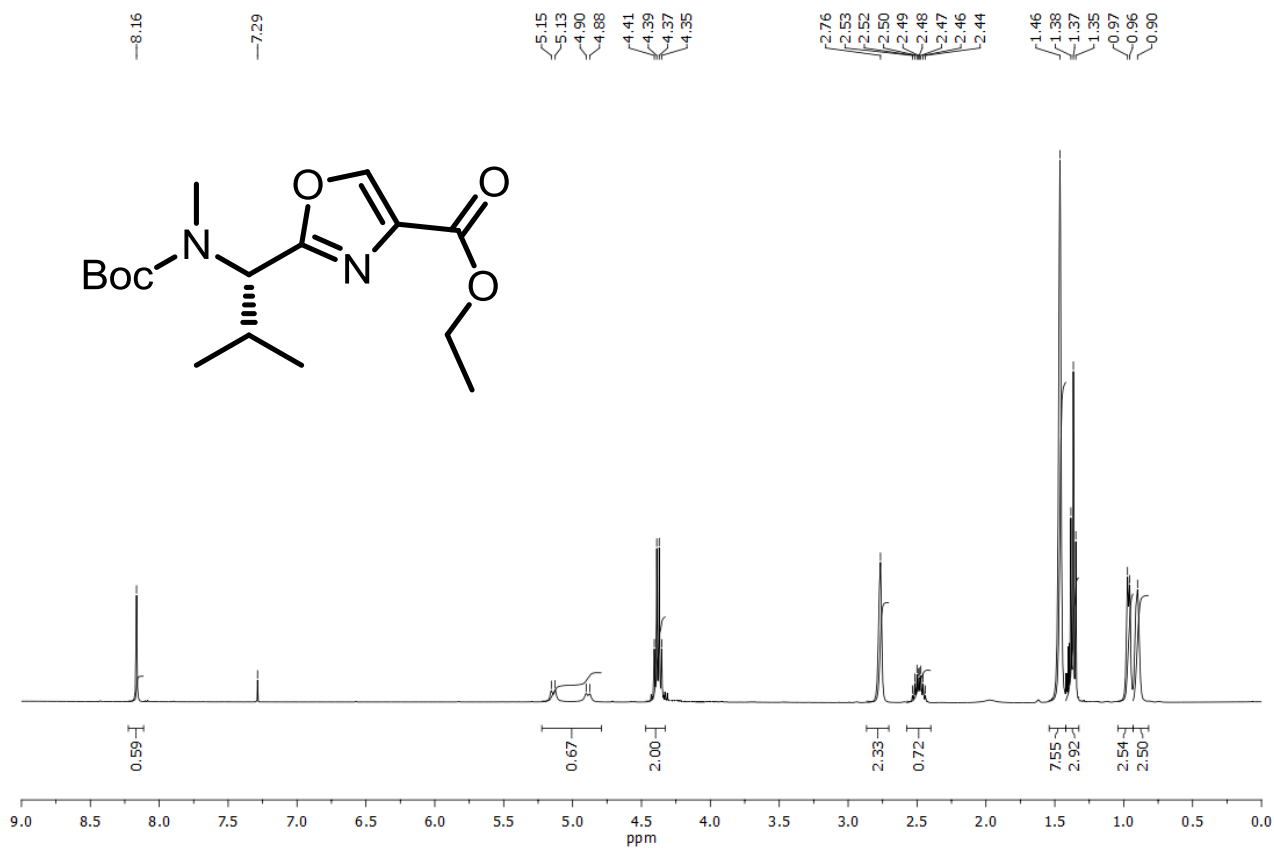
# Compound 21



**Compound 22**

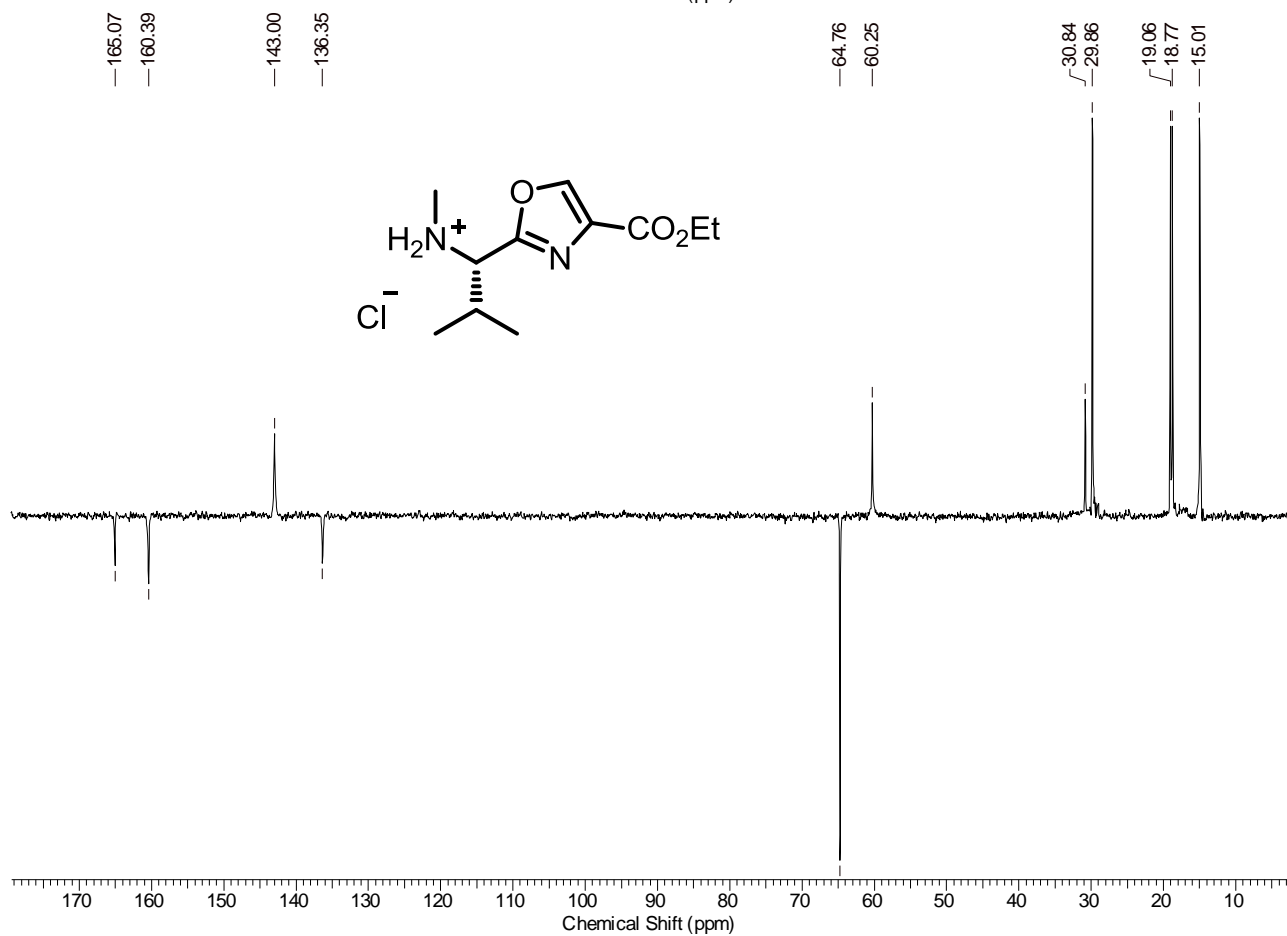
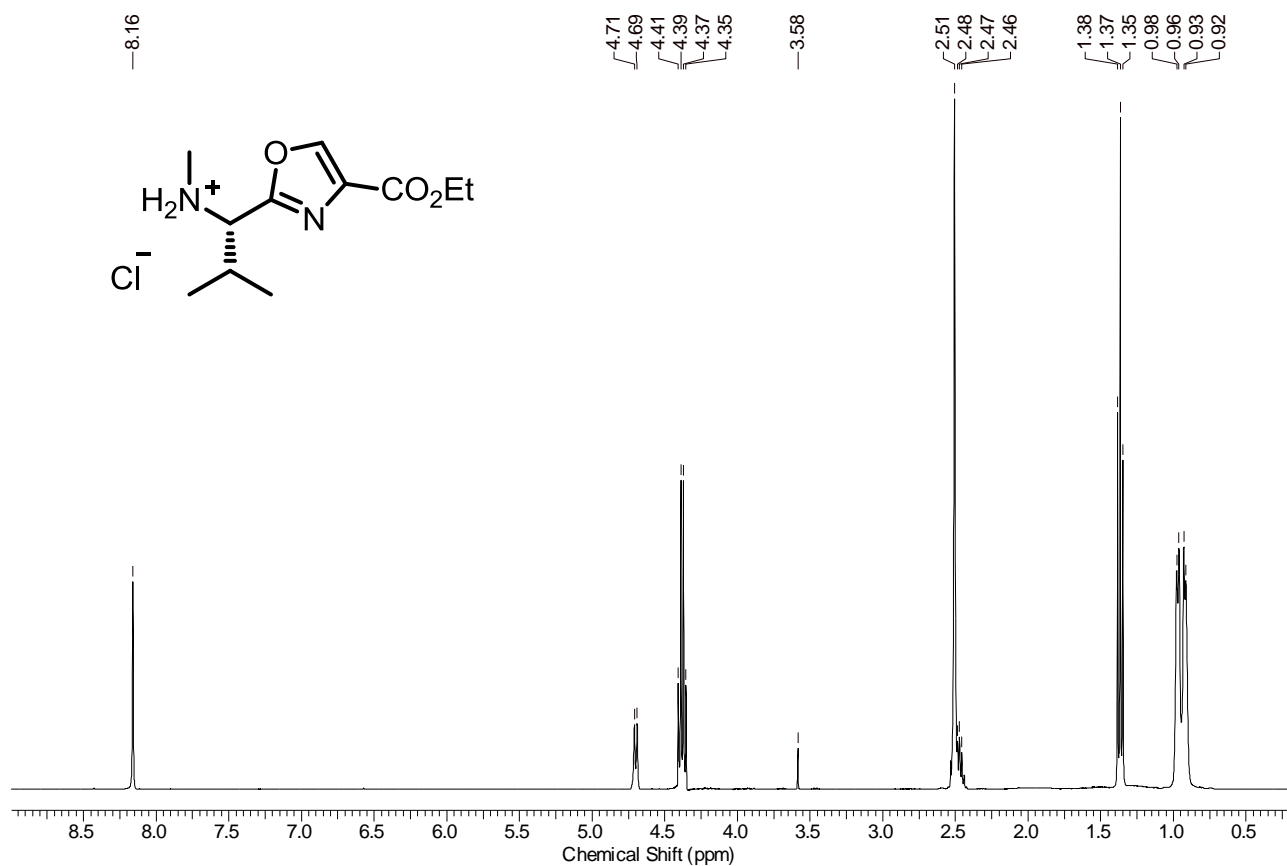


# Compound 23

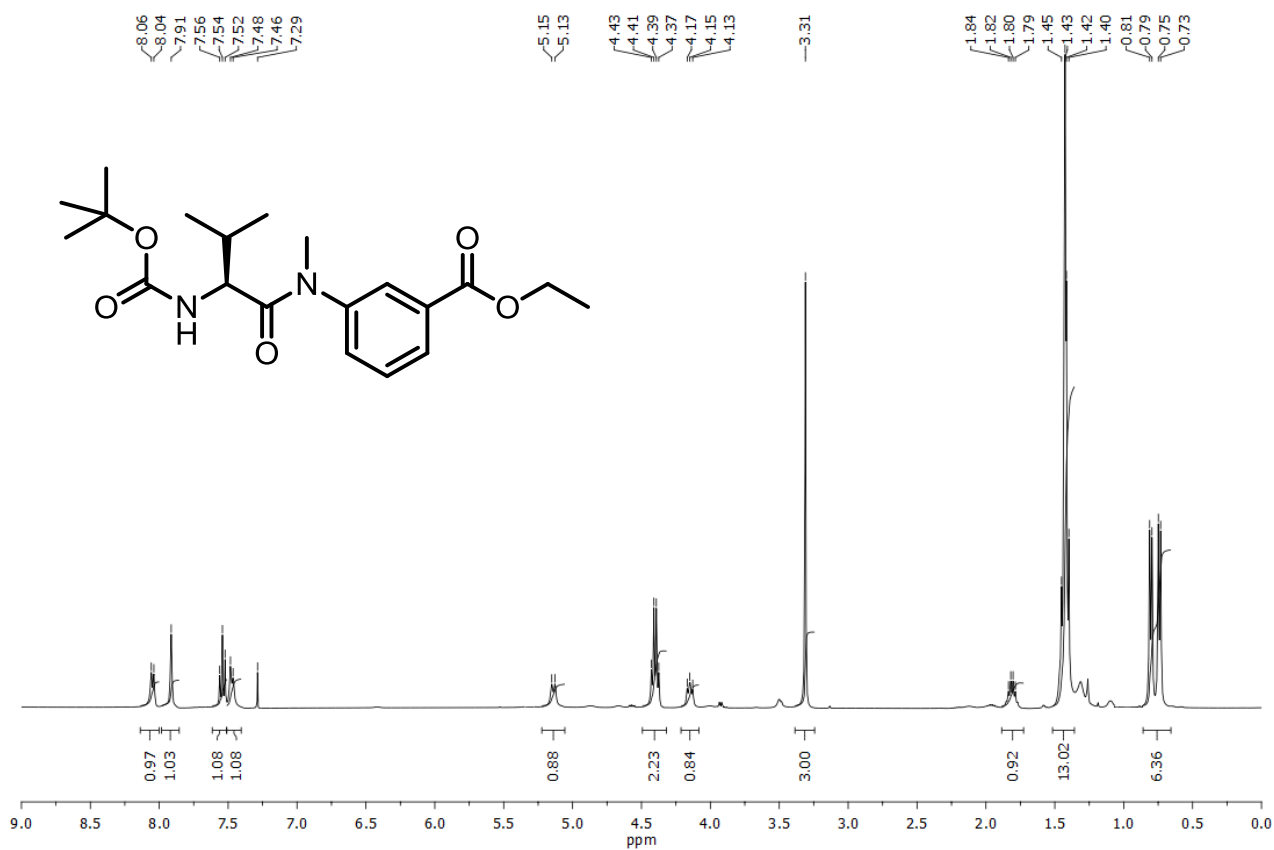




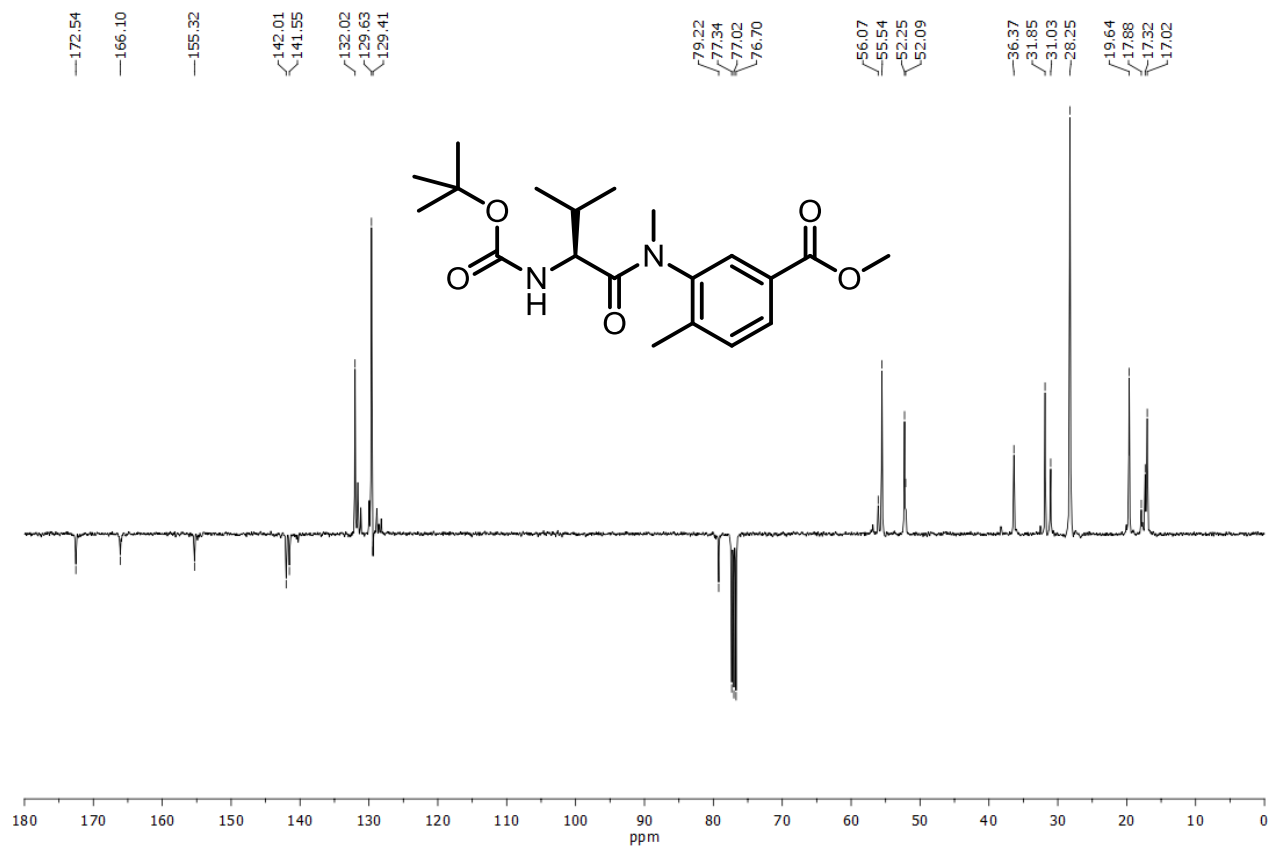
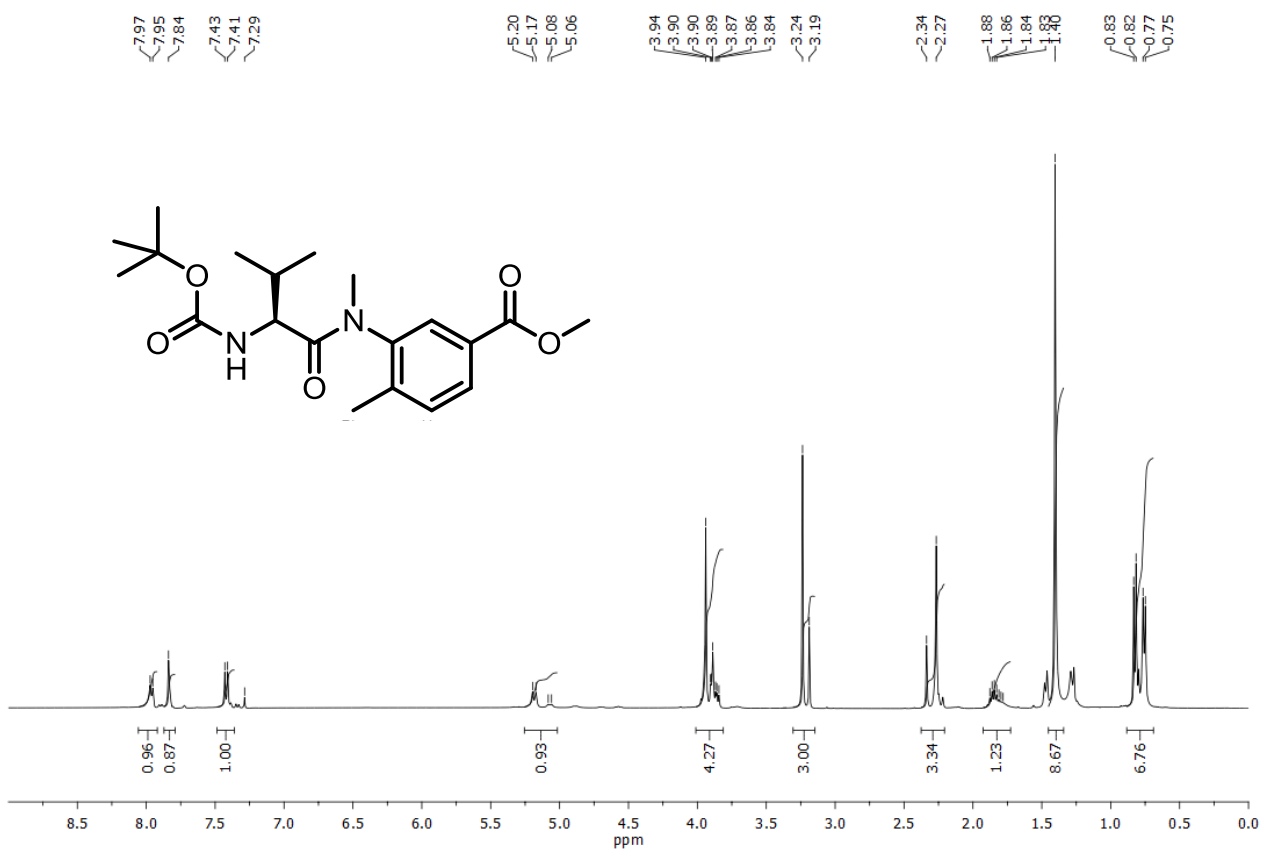
# Compound 24



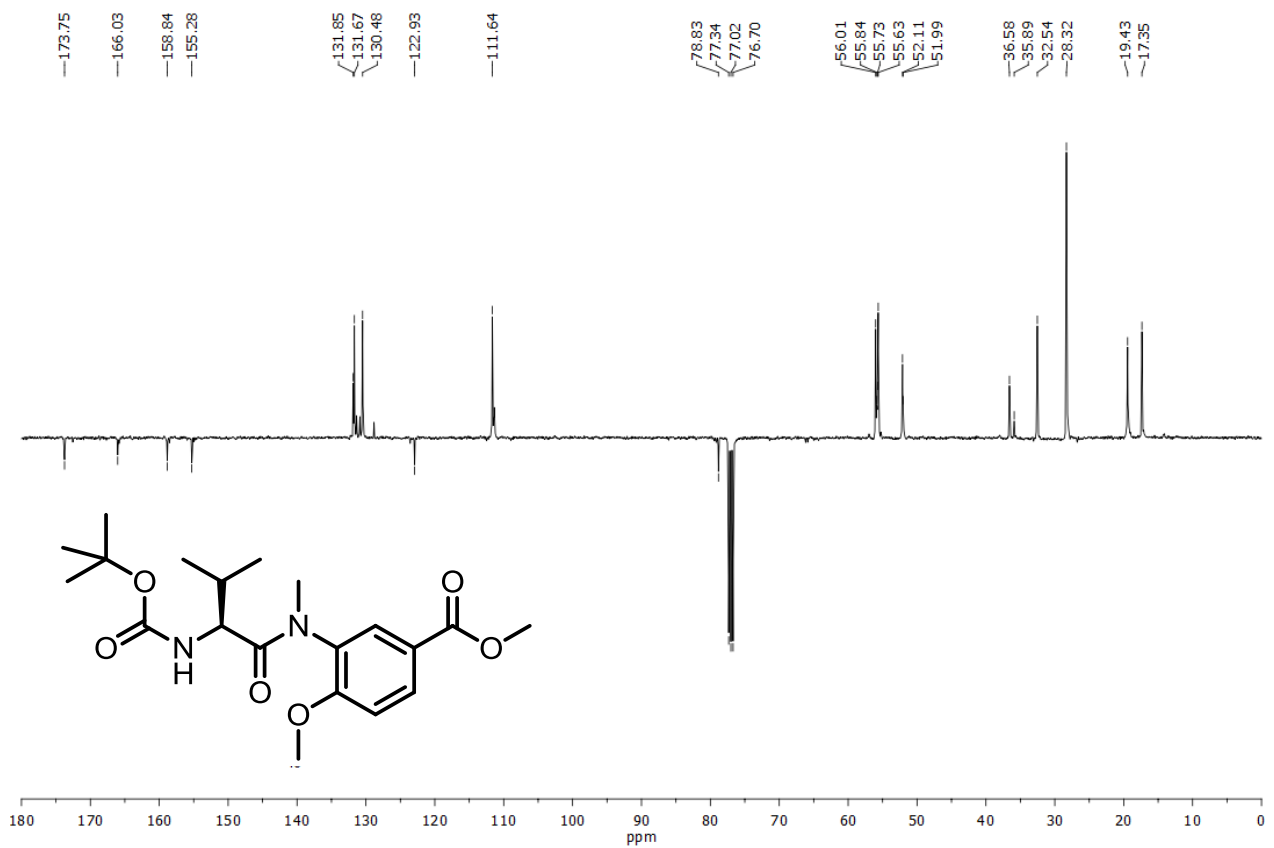
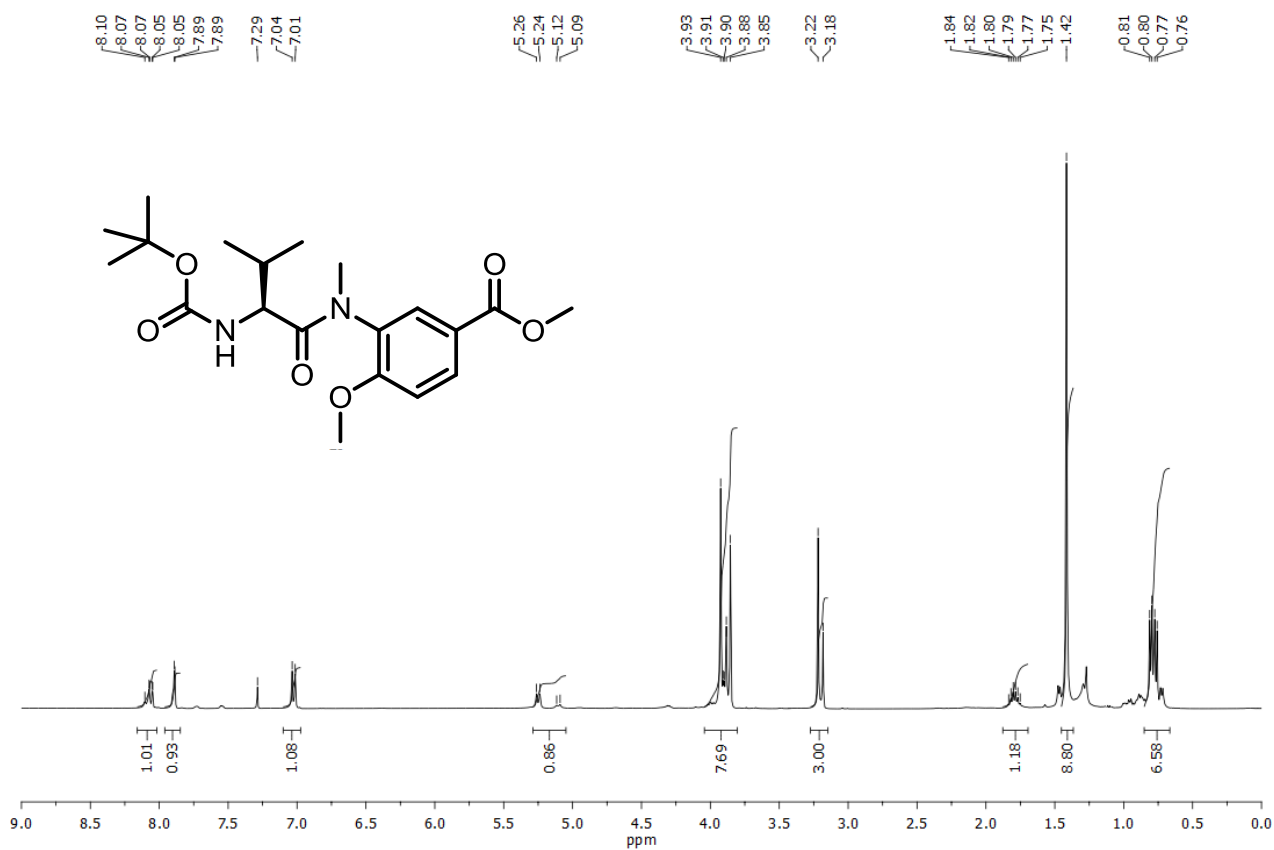
# Compound 25



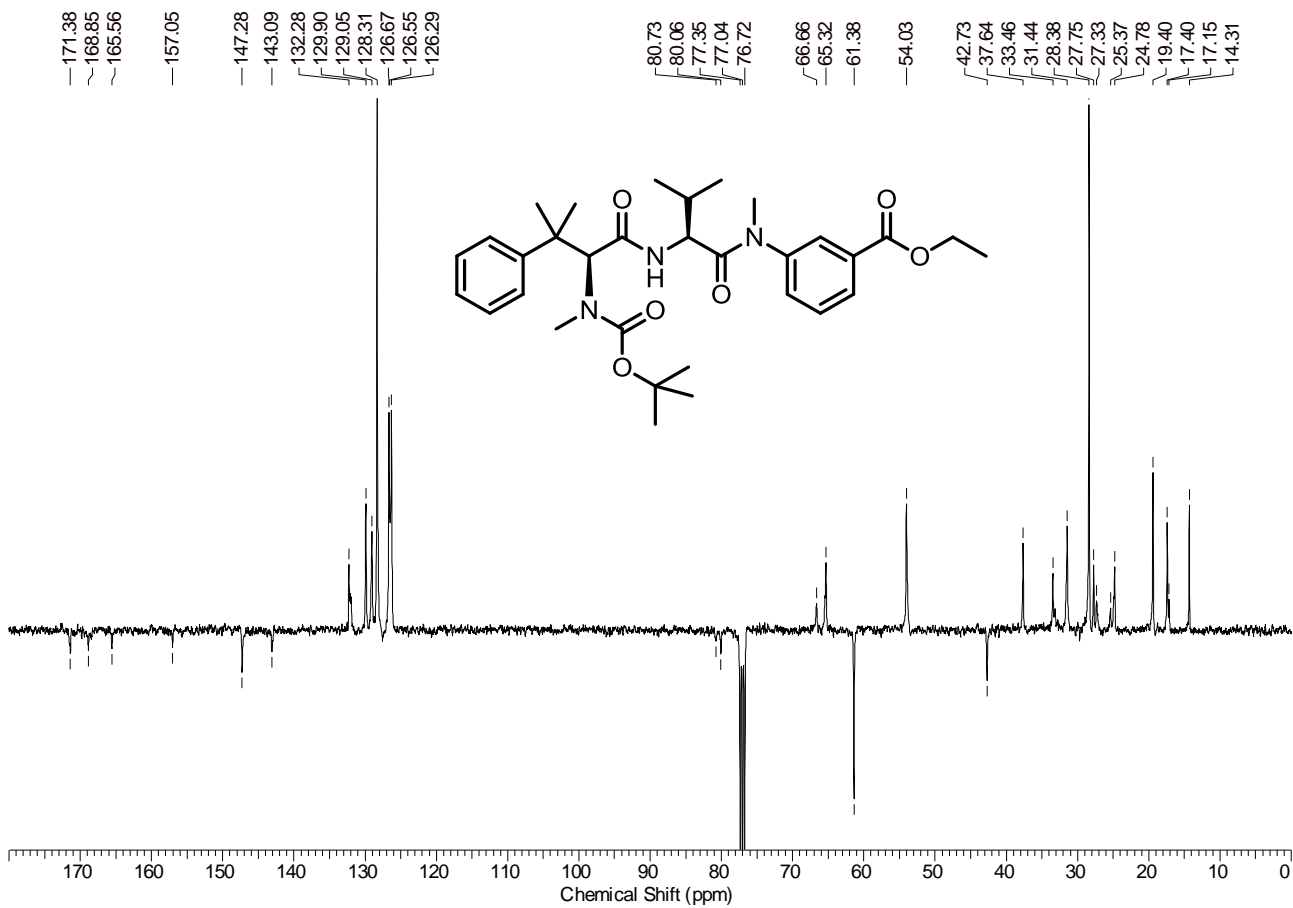
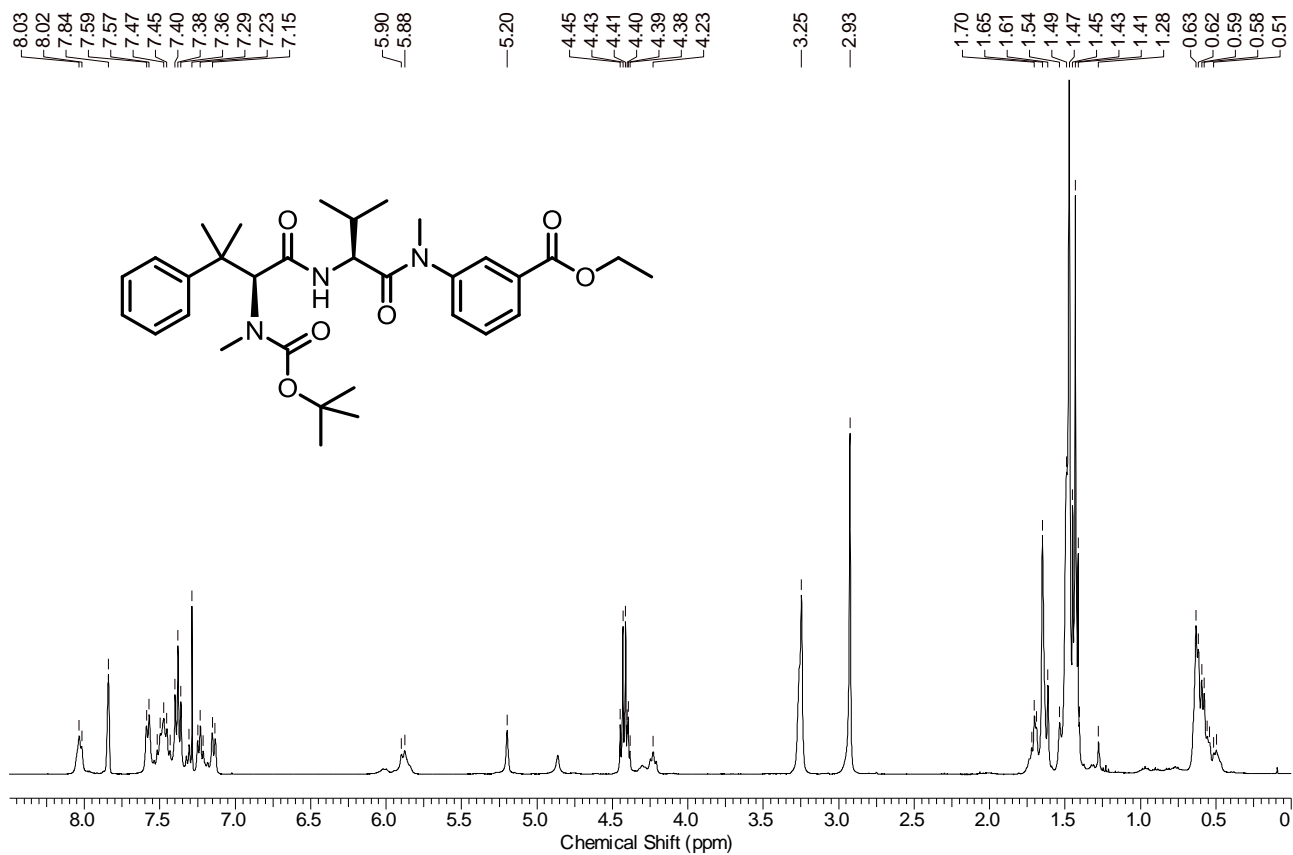
# Compound 26



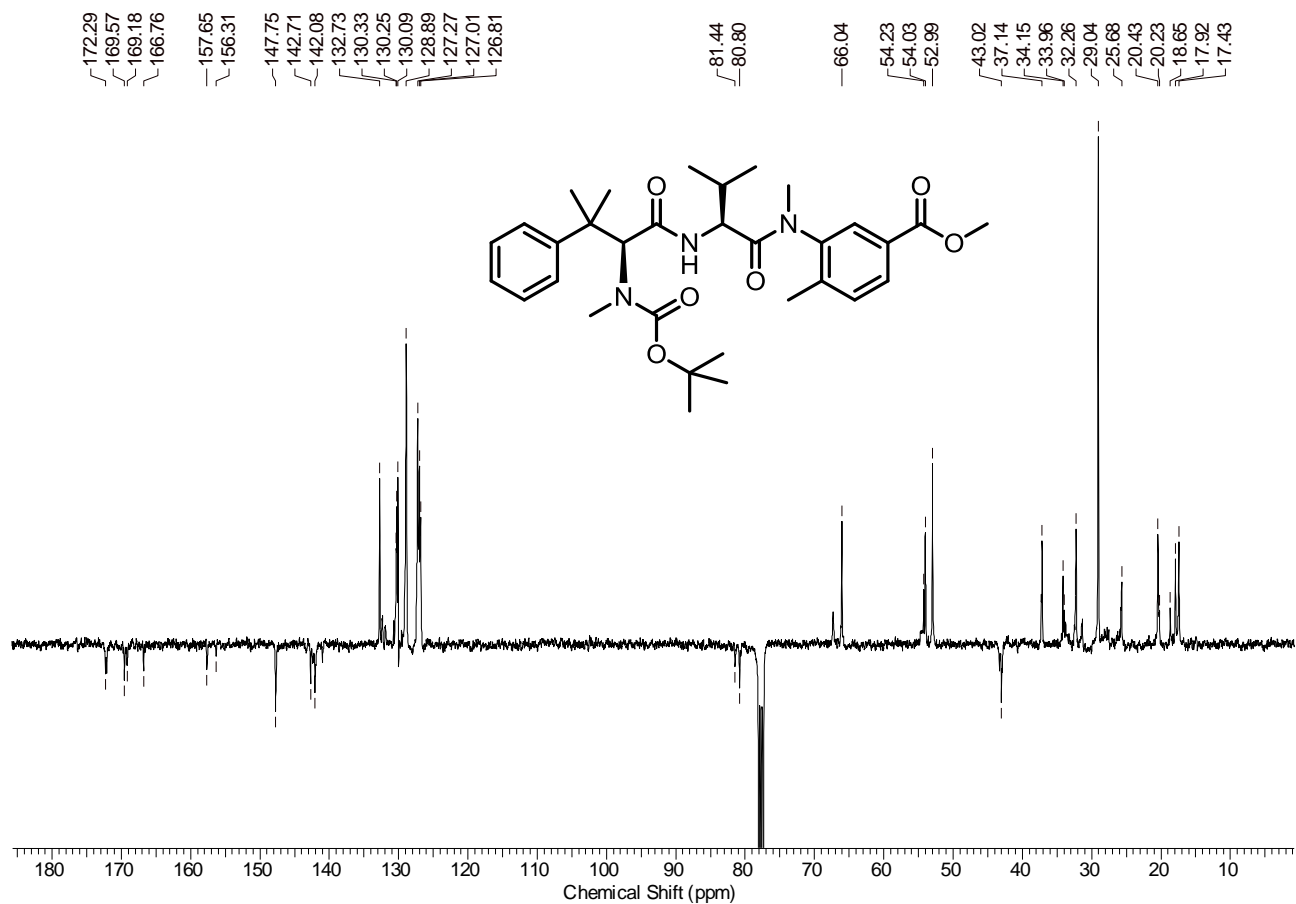
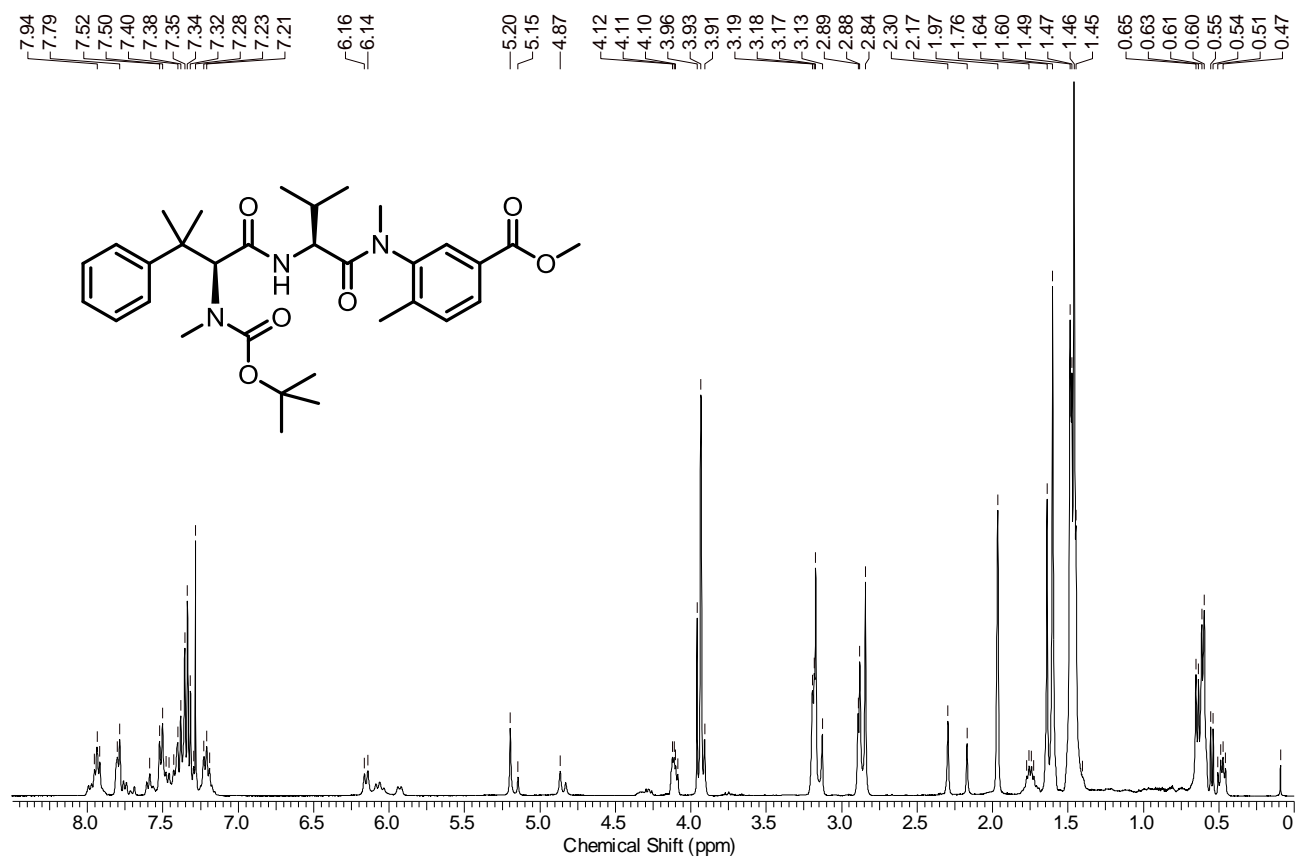
**Compound 27**



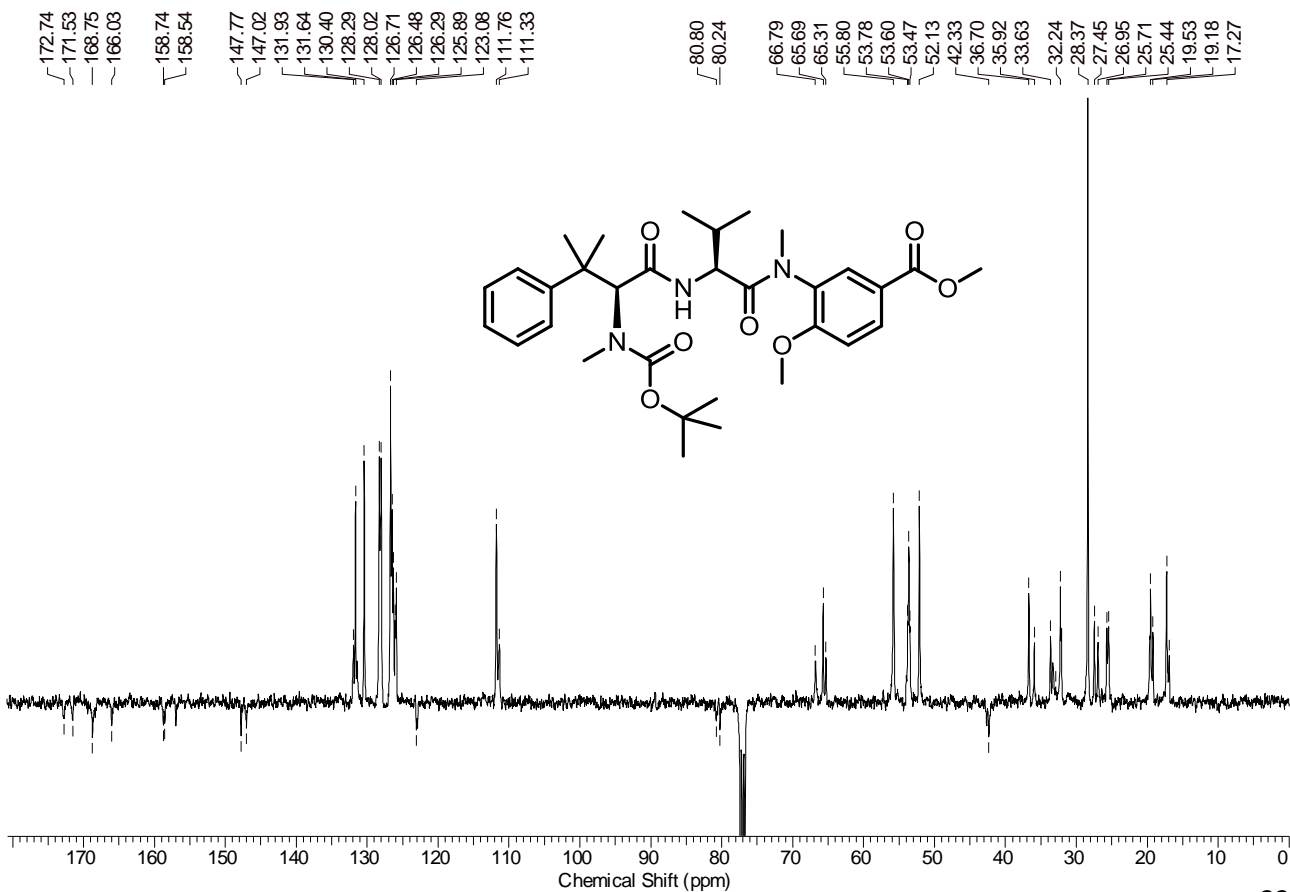
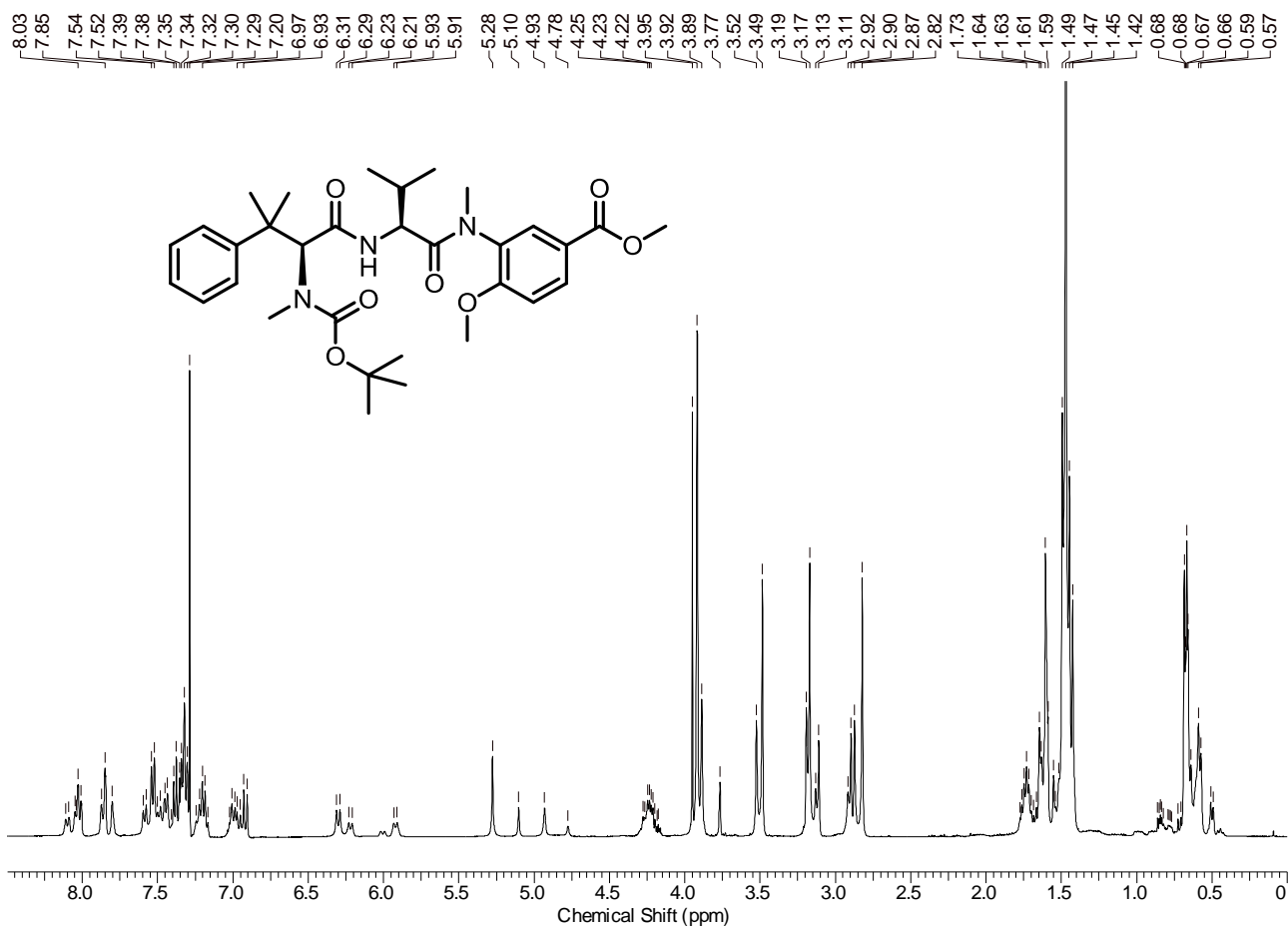
# Compound 31



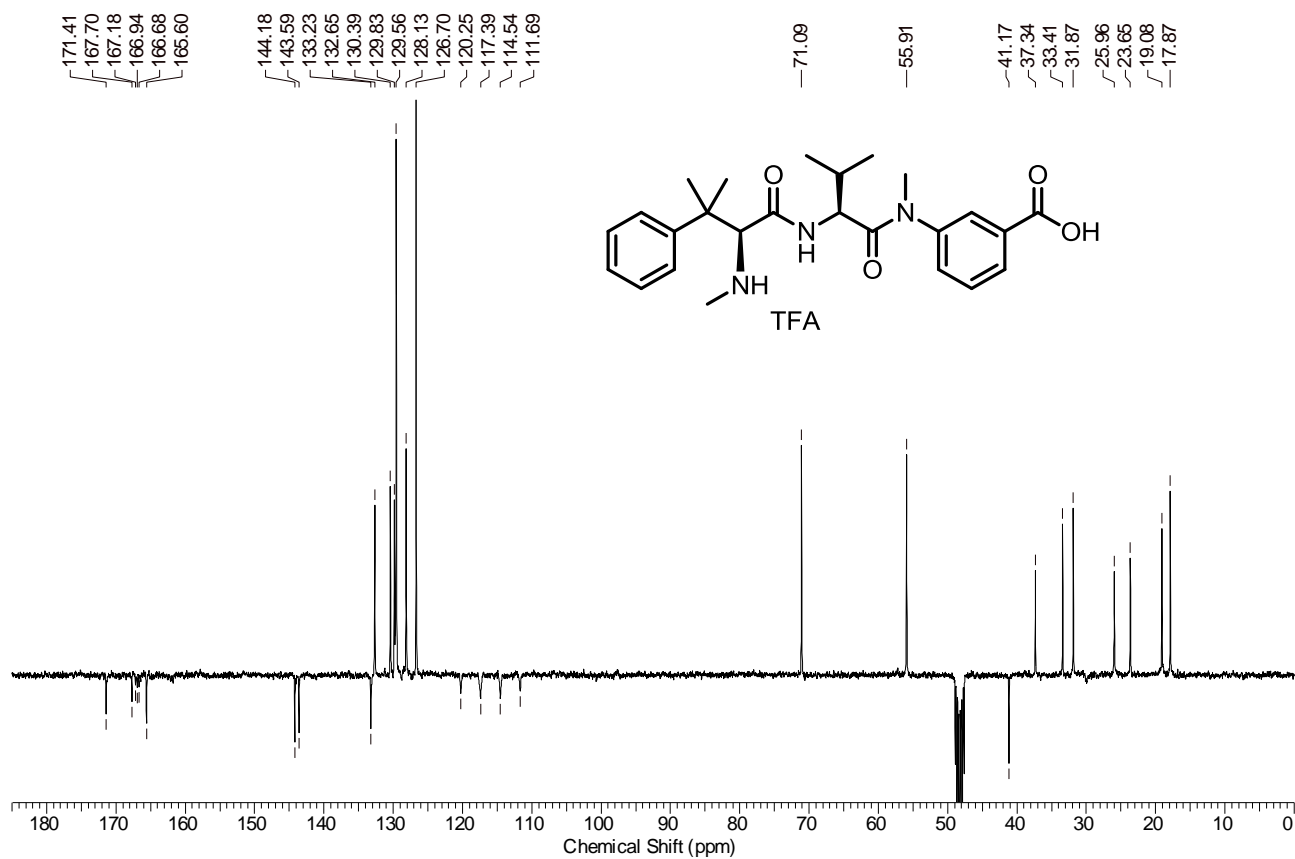
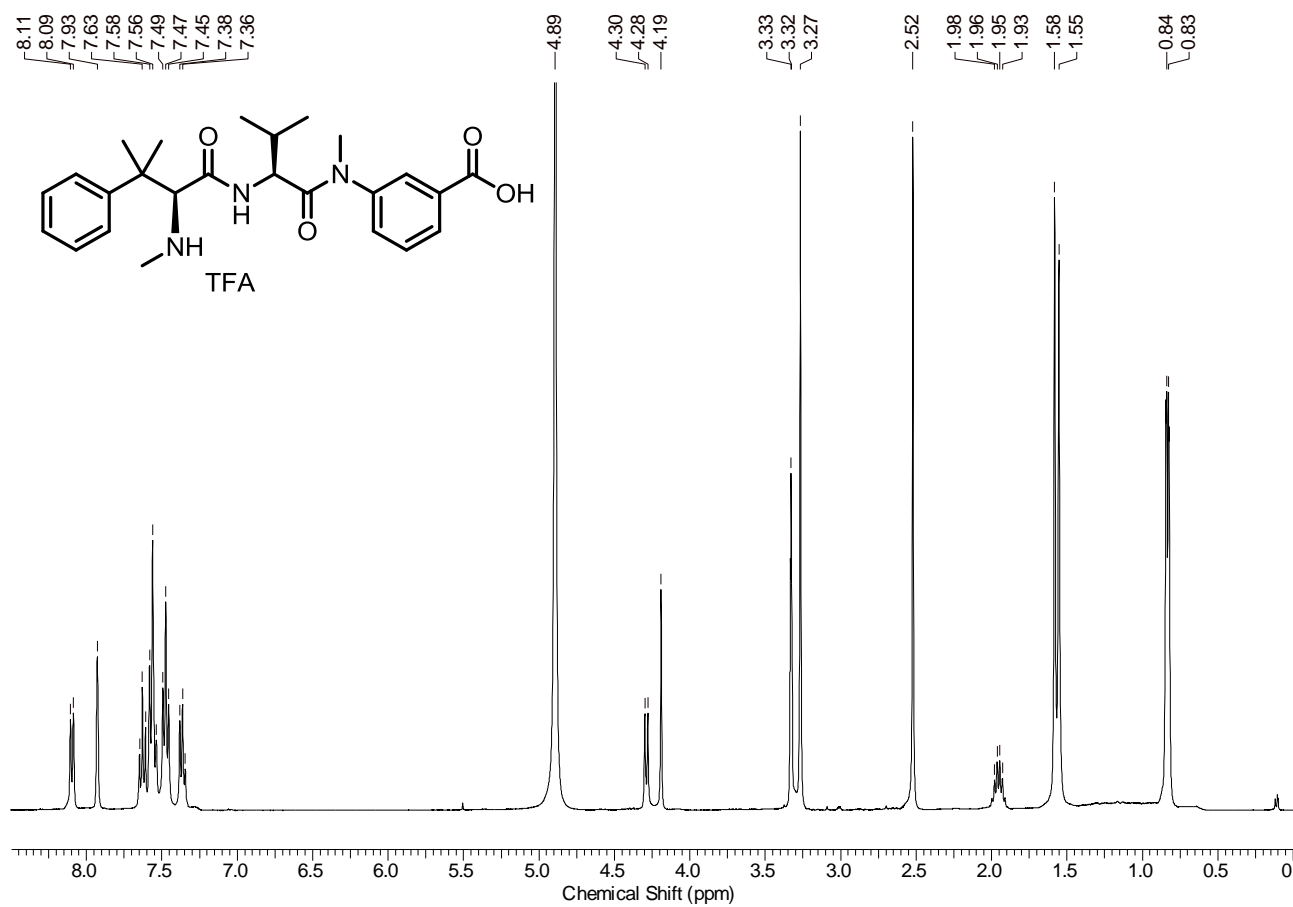
# Compound 32



**Compound 33**

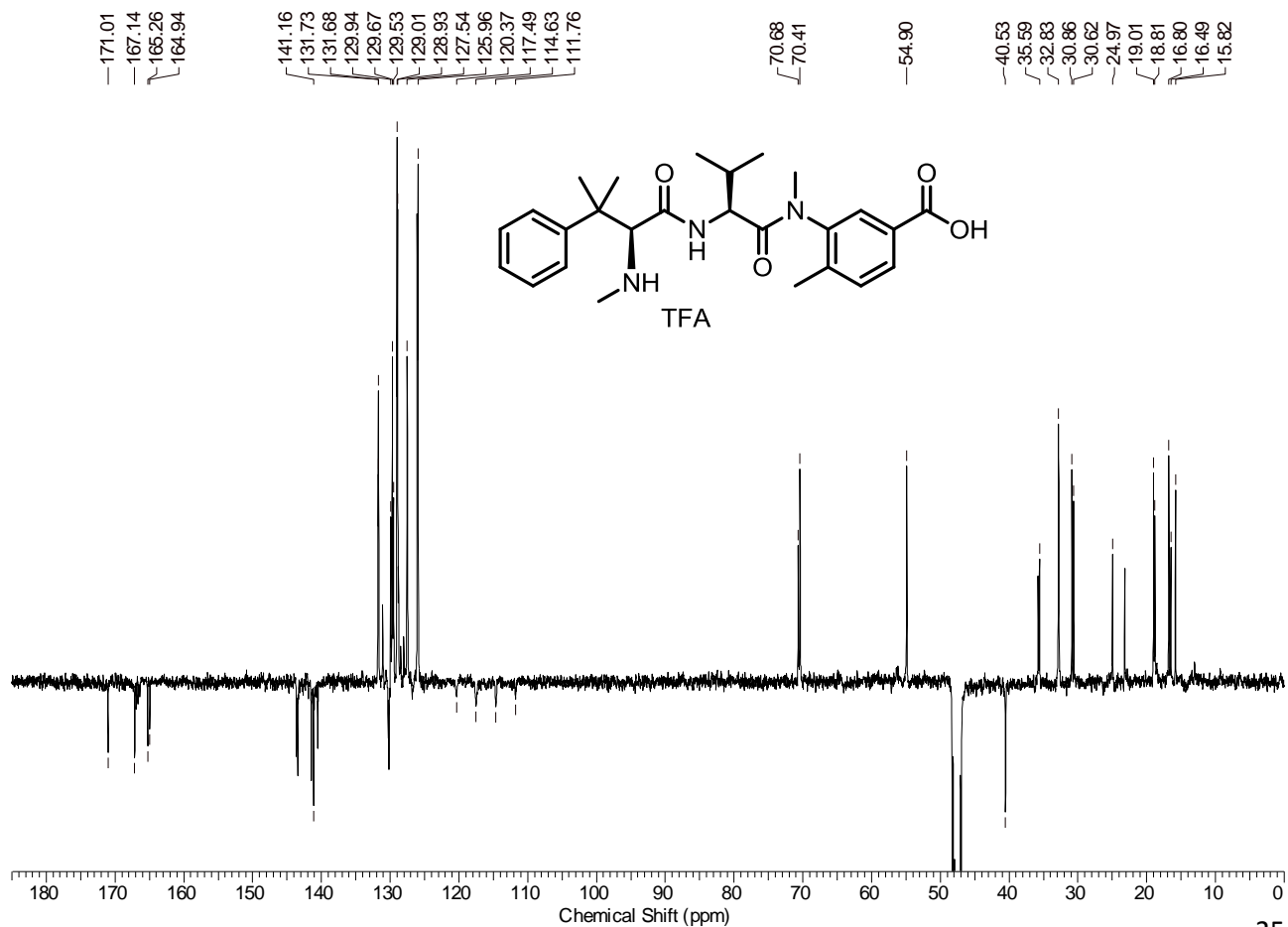
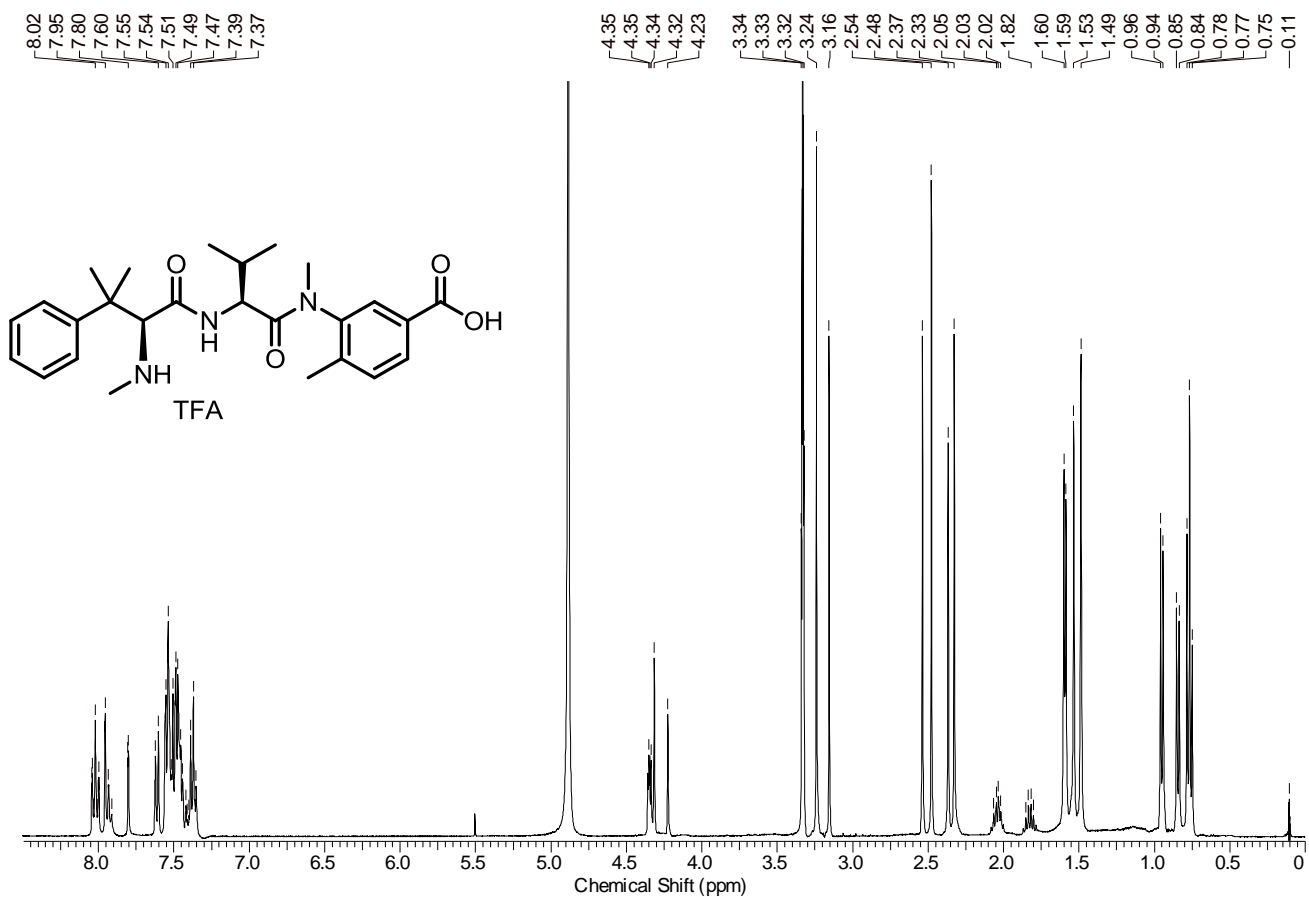


### Compound 3

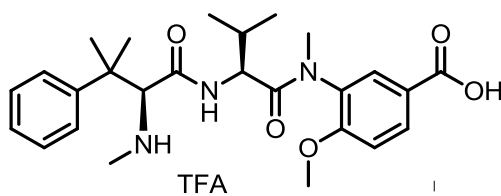
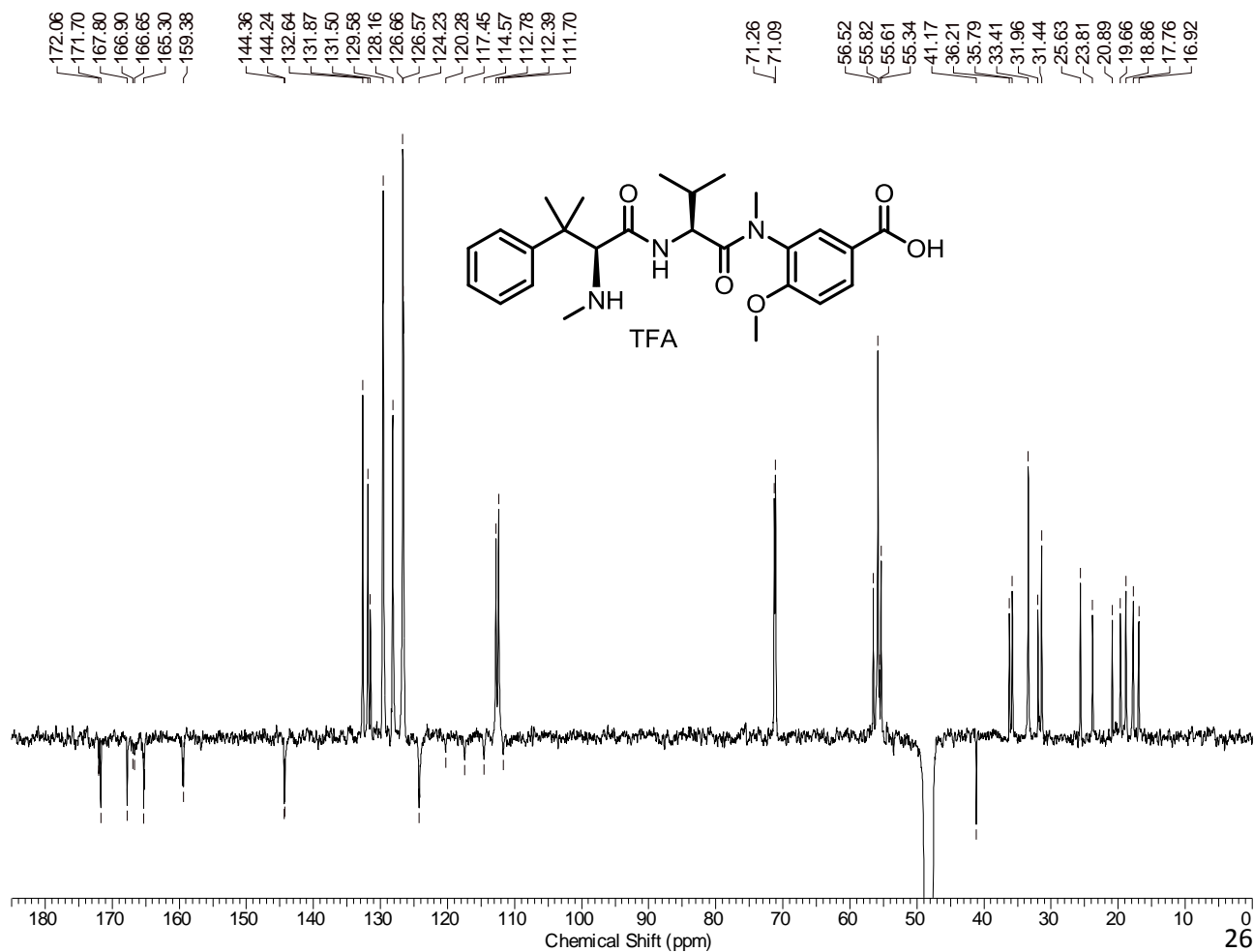
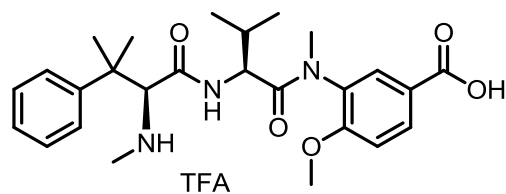
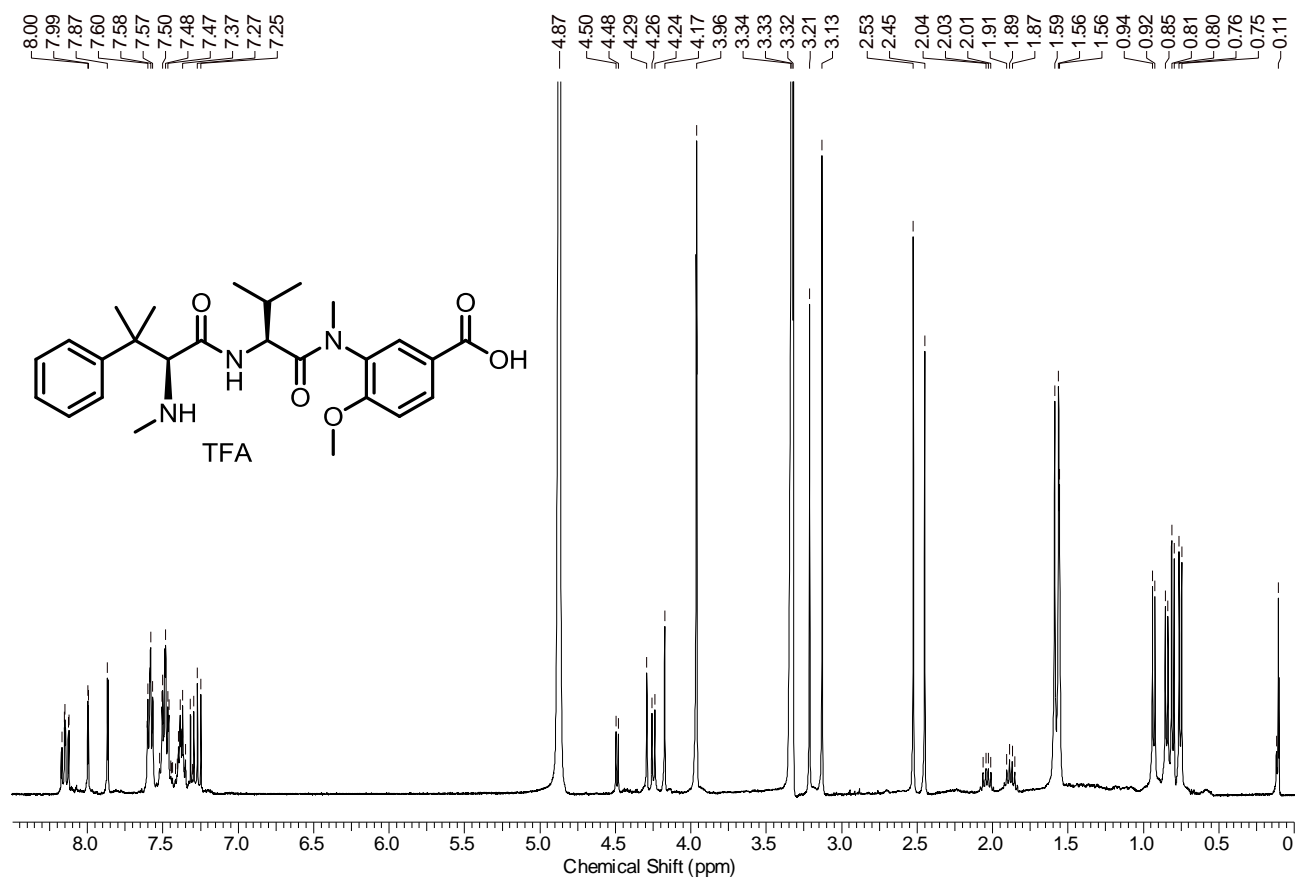




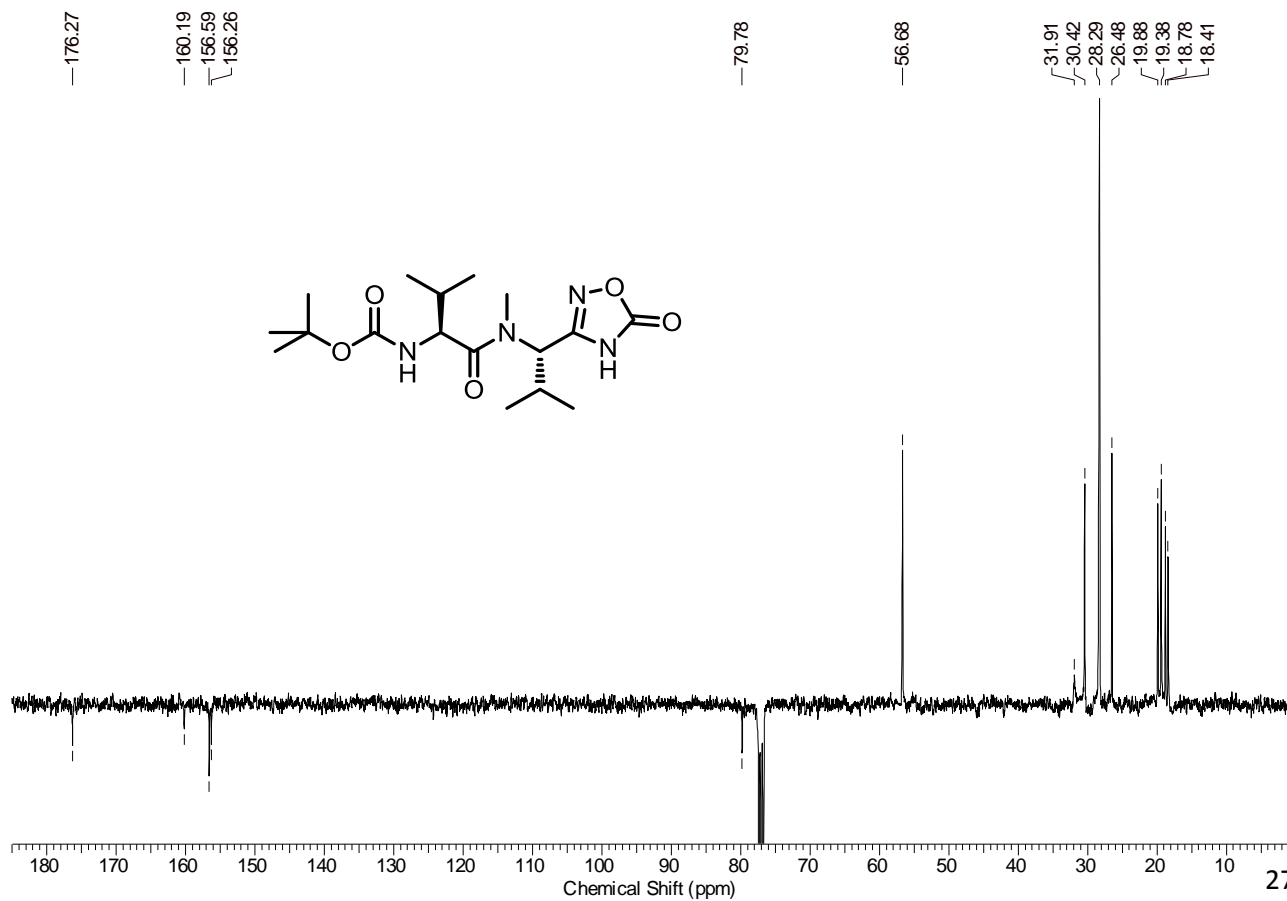
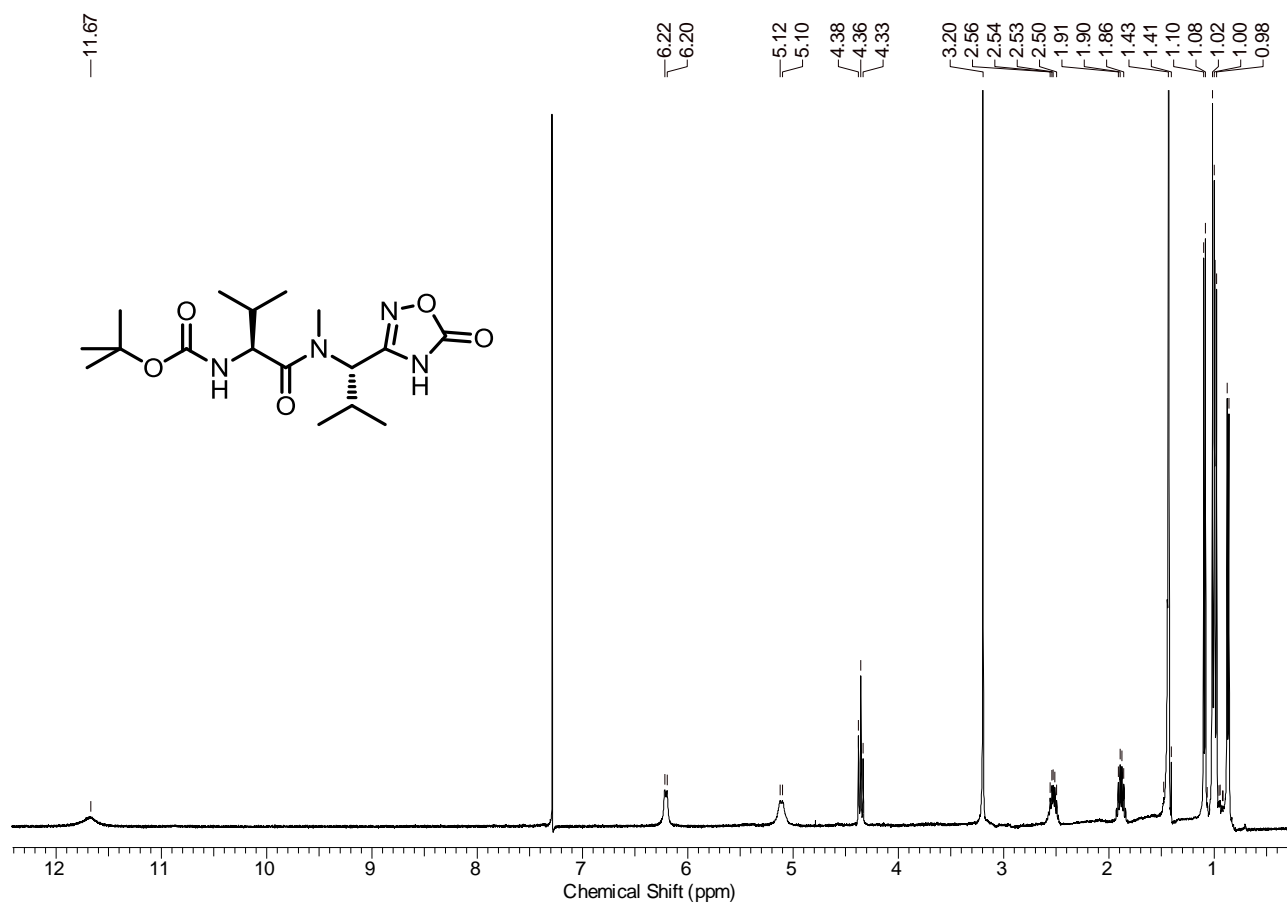
# Compound 4



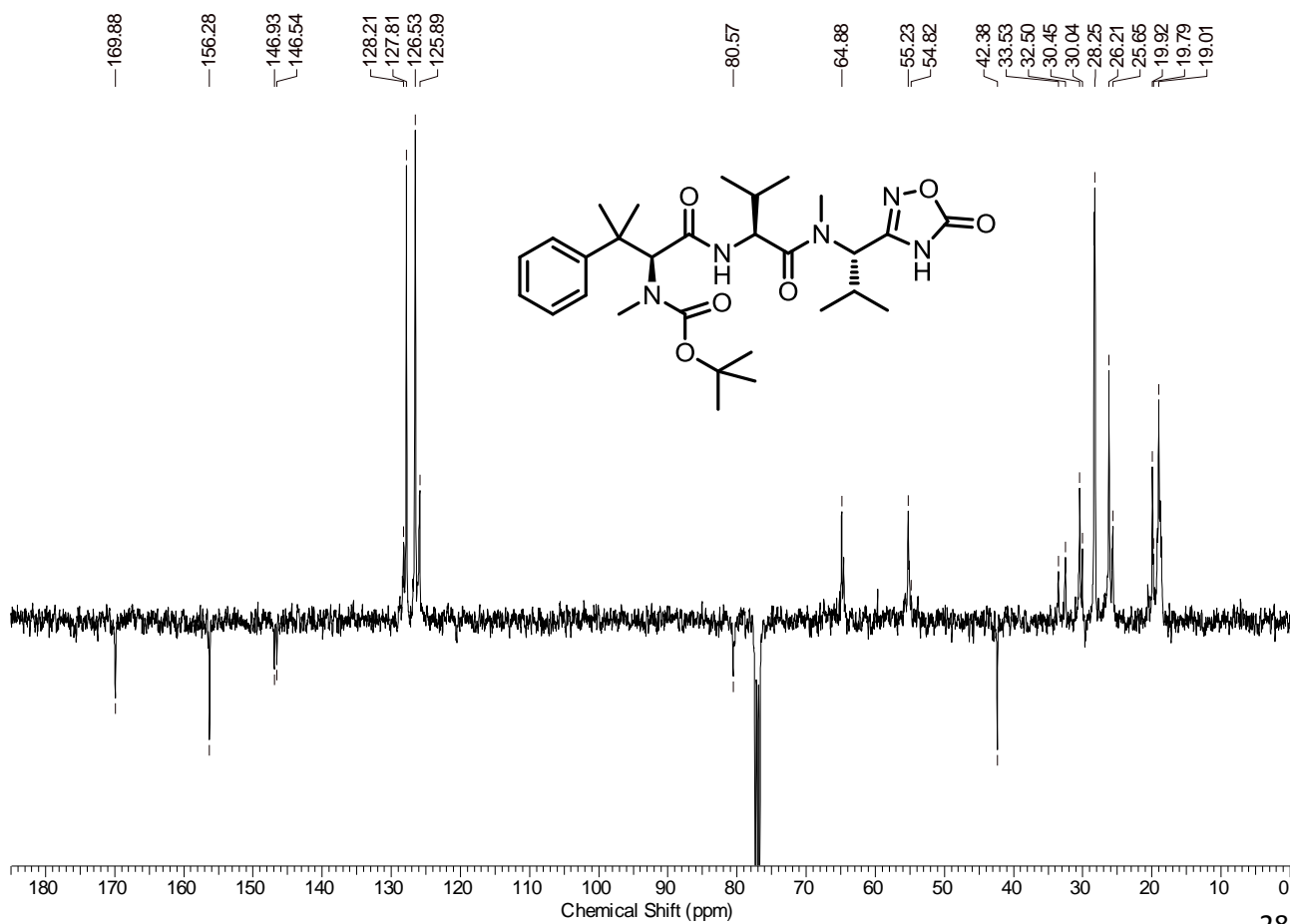
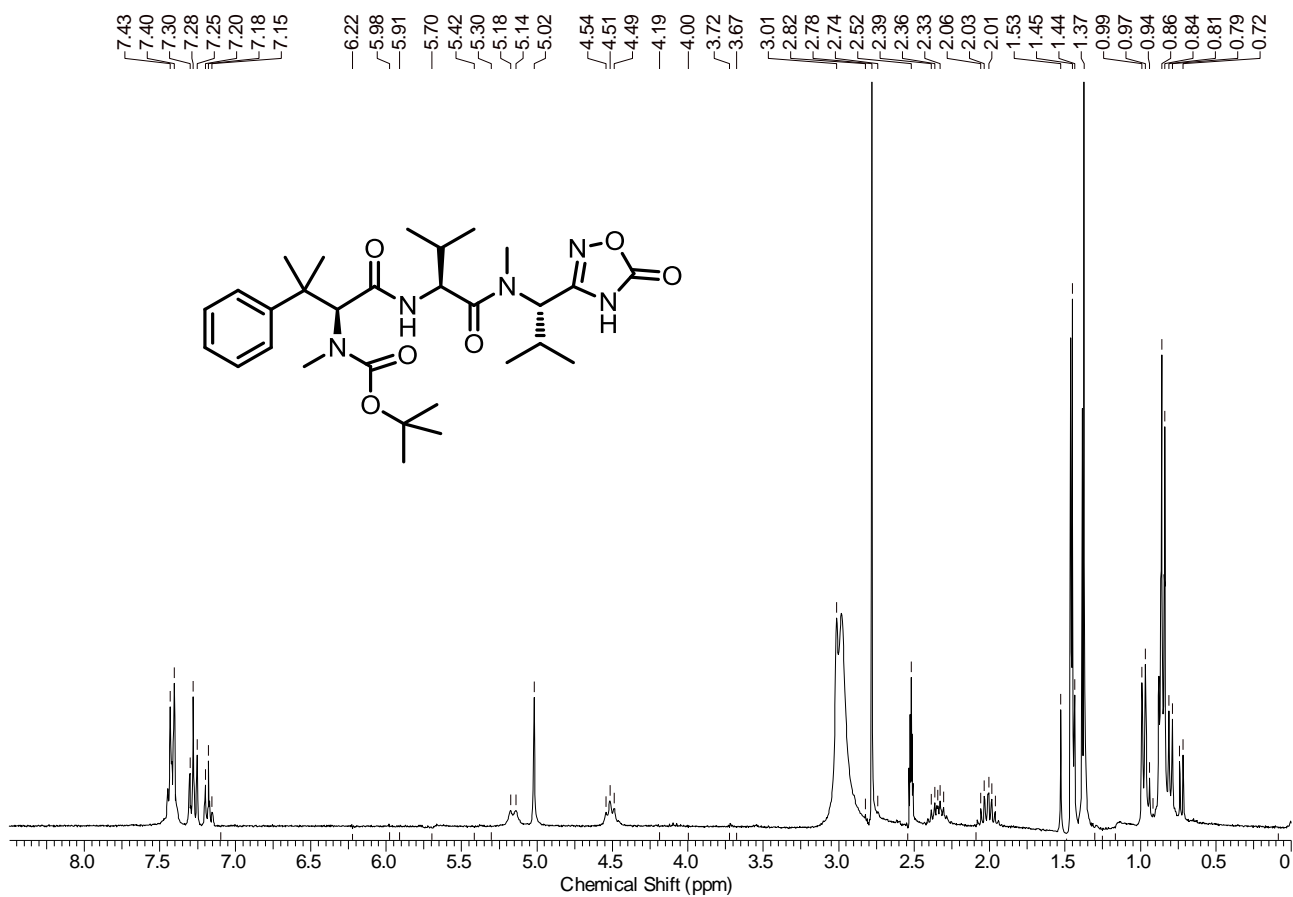
# Compound 5



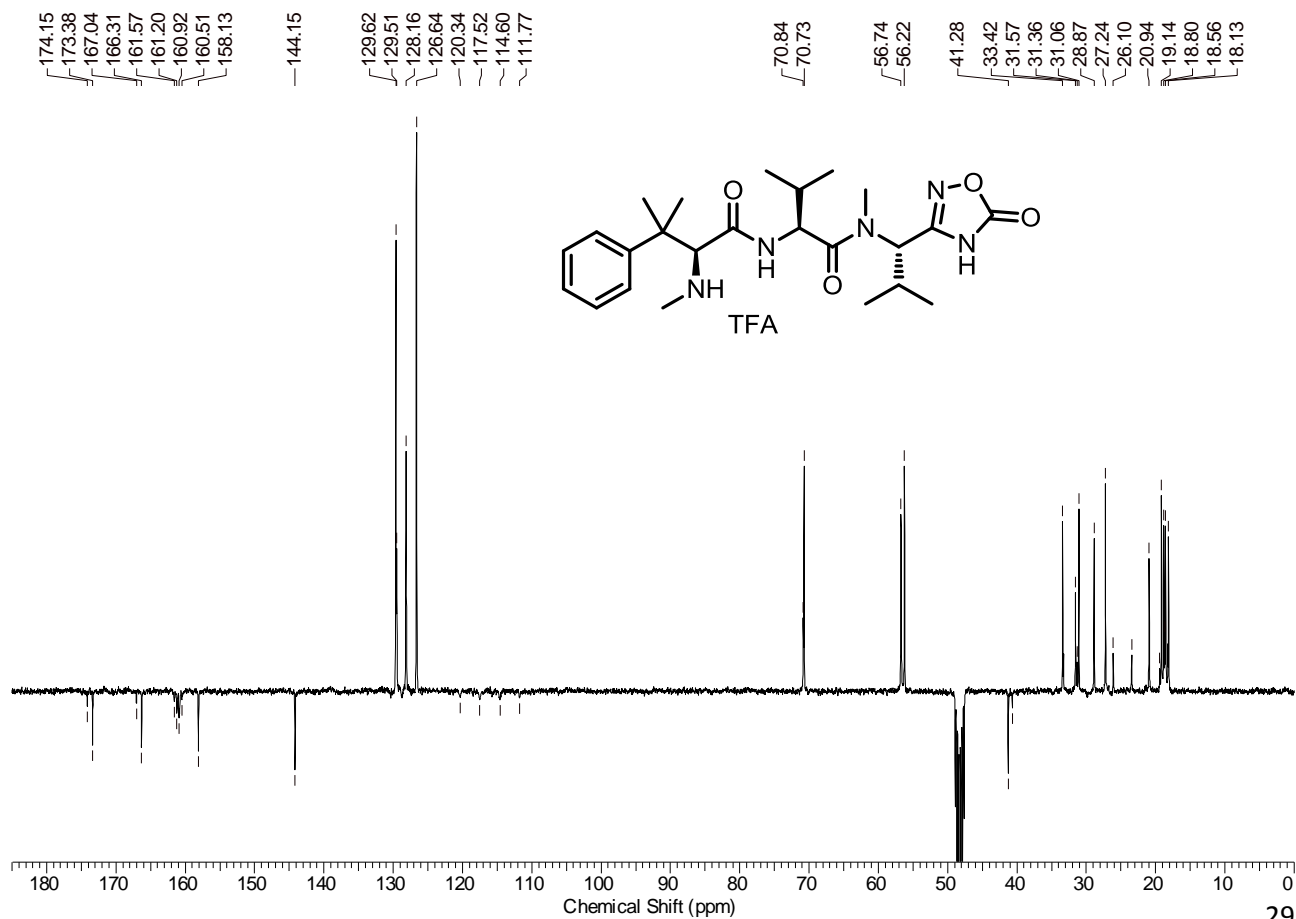
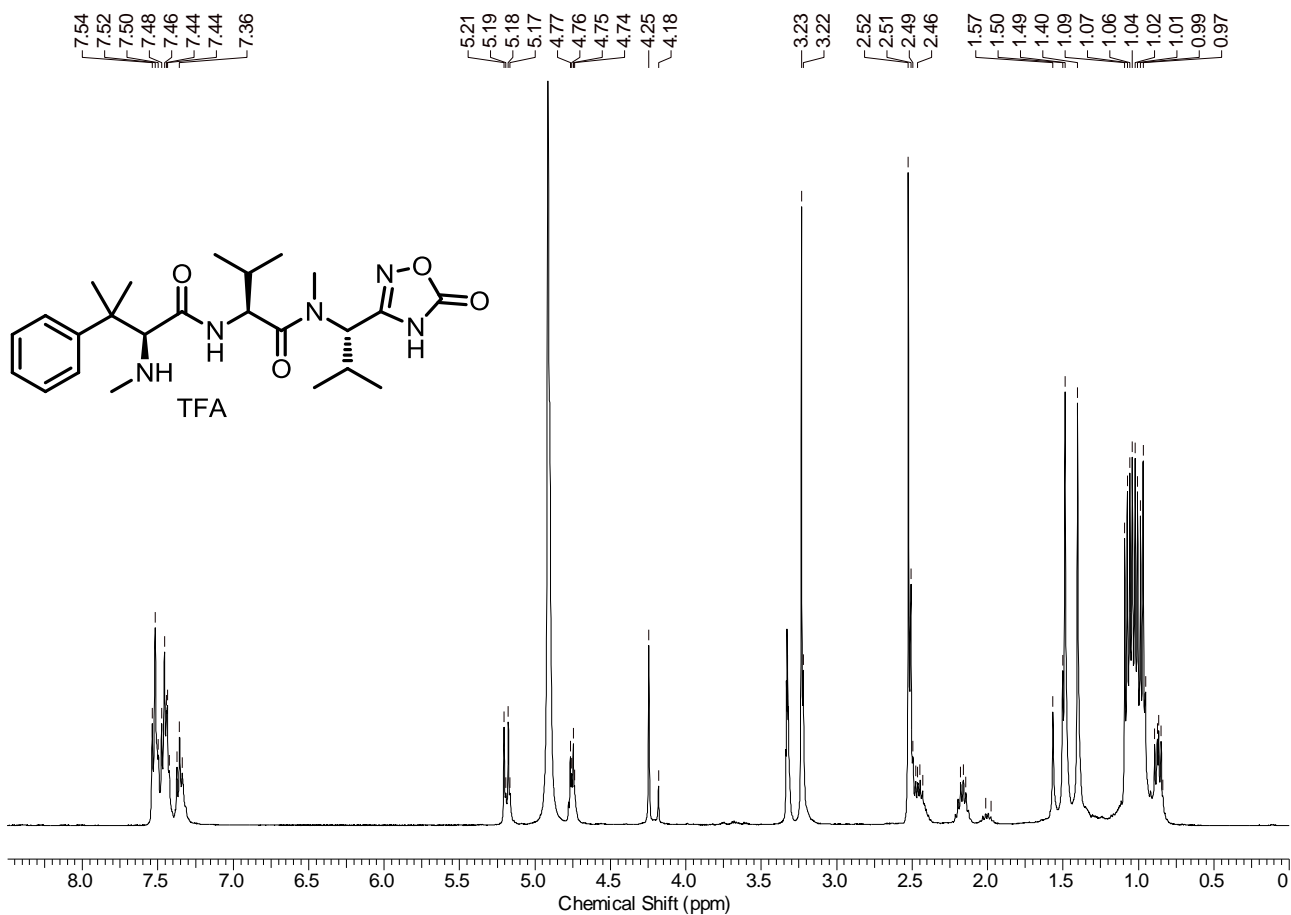
# Compound 28



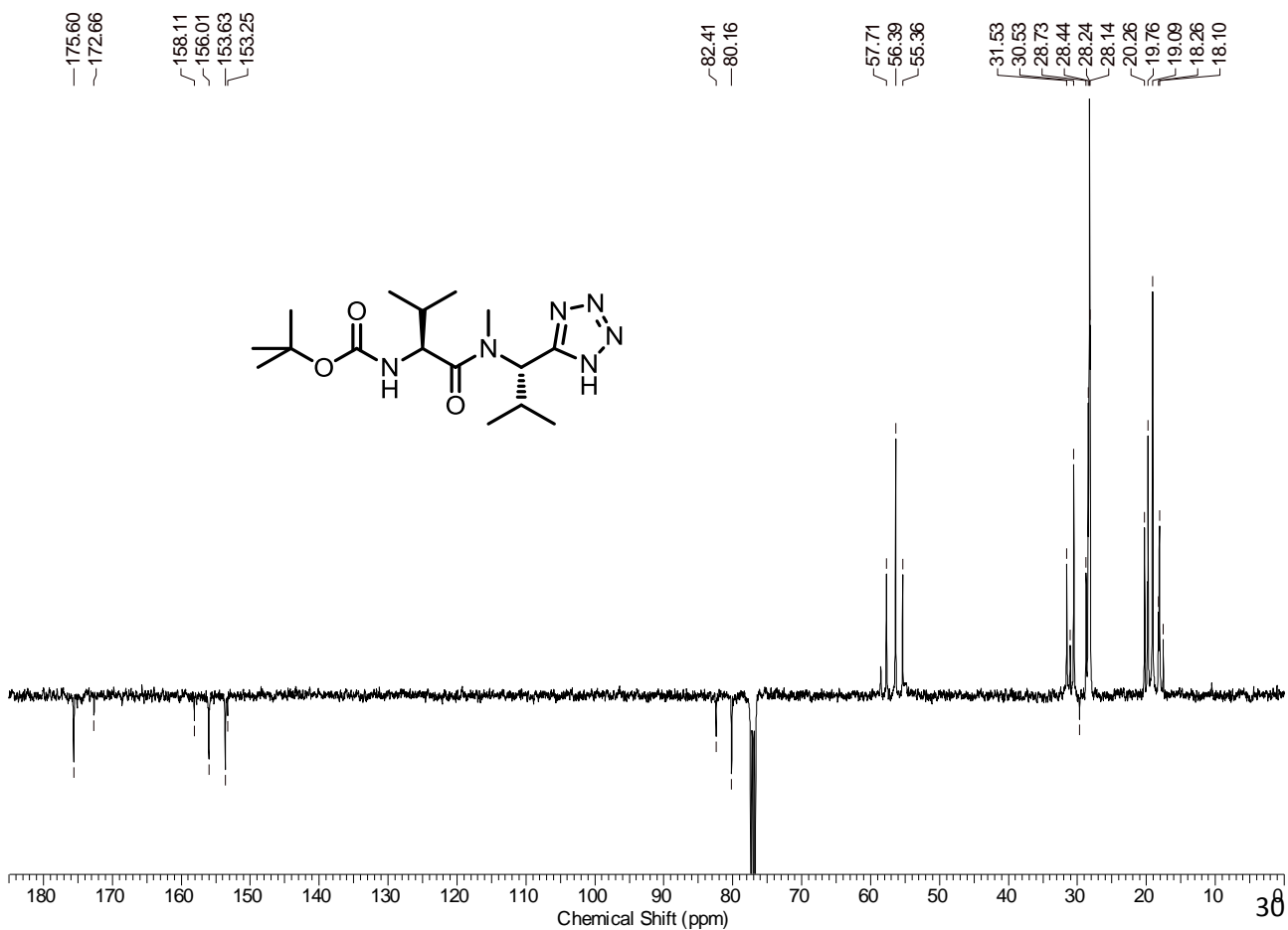
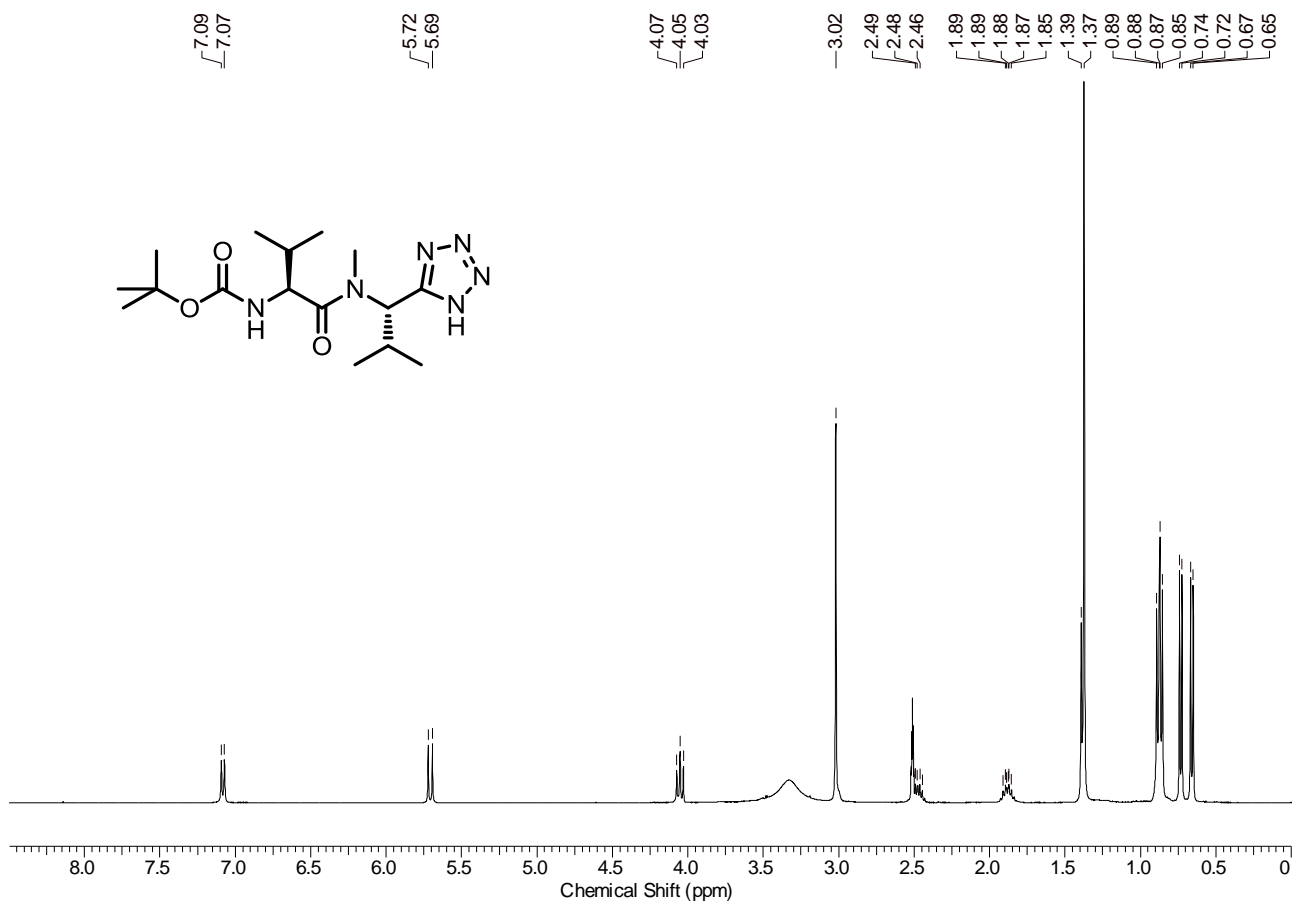
# Compound 34



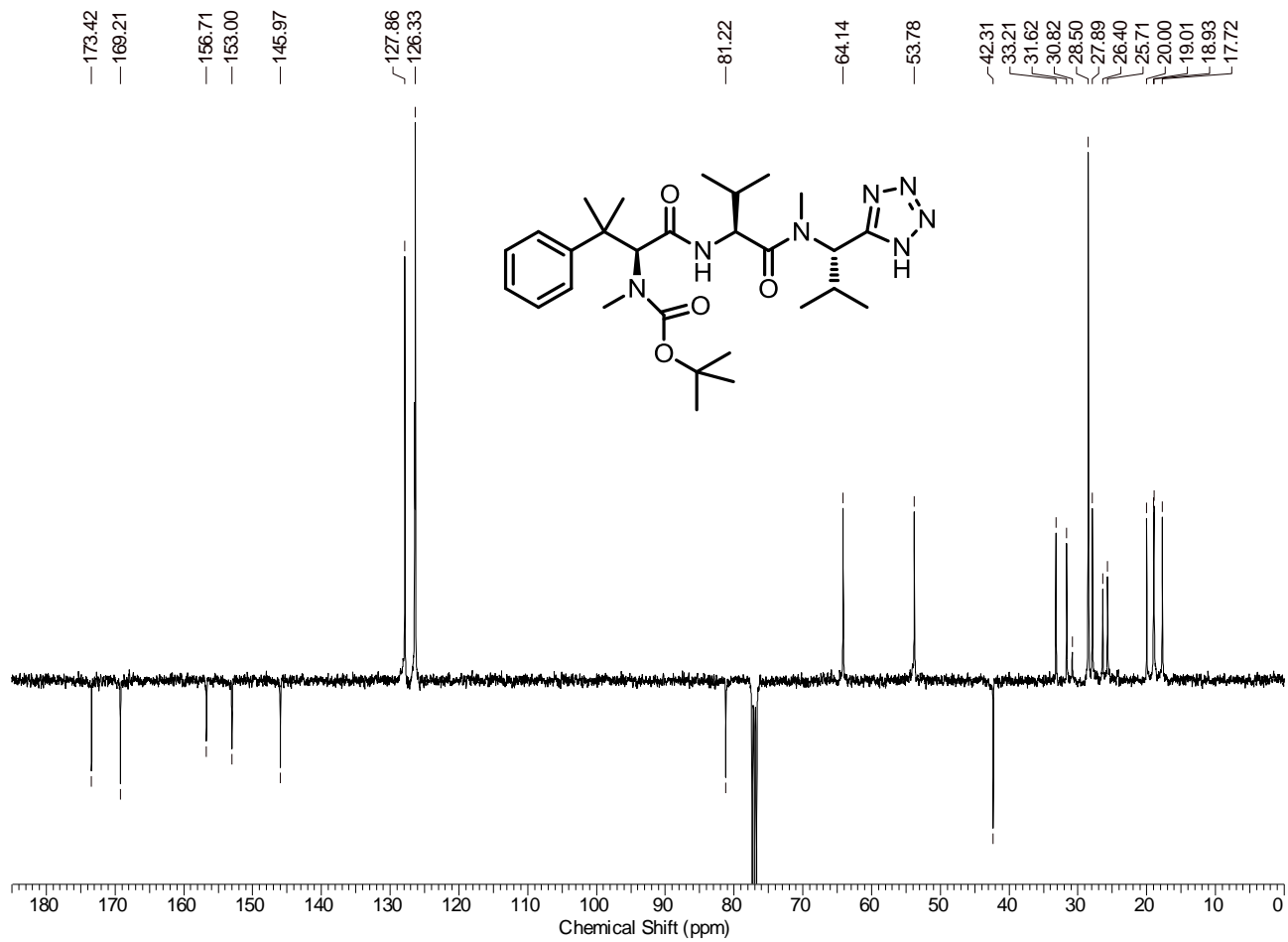
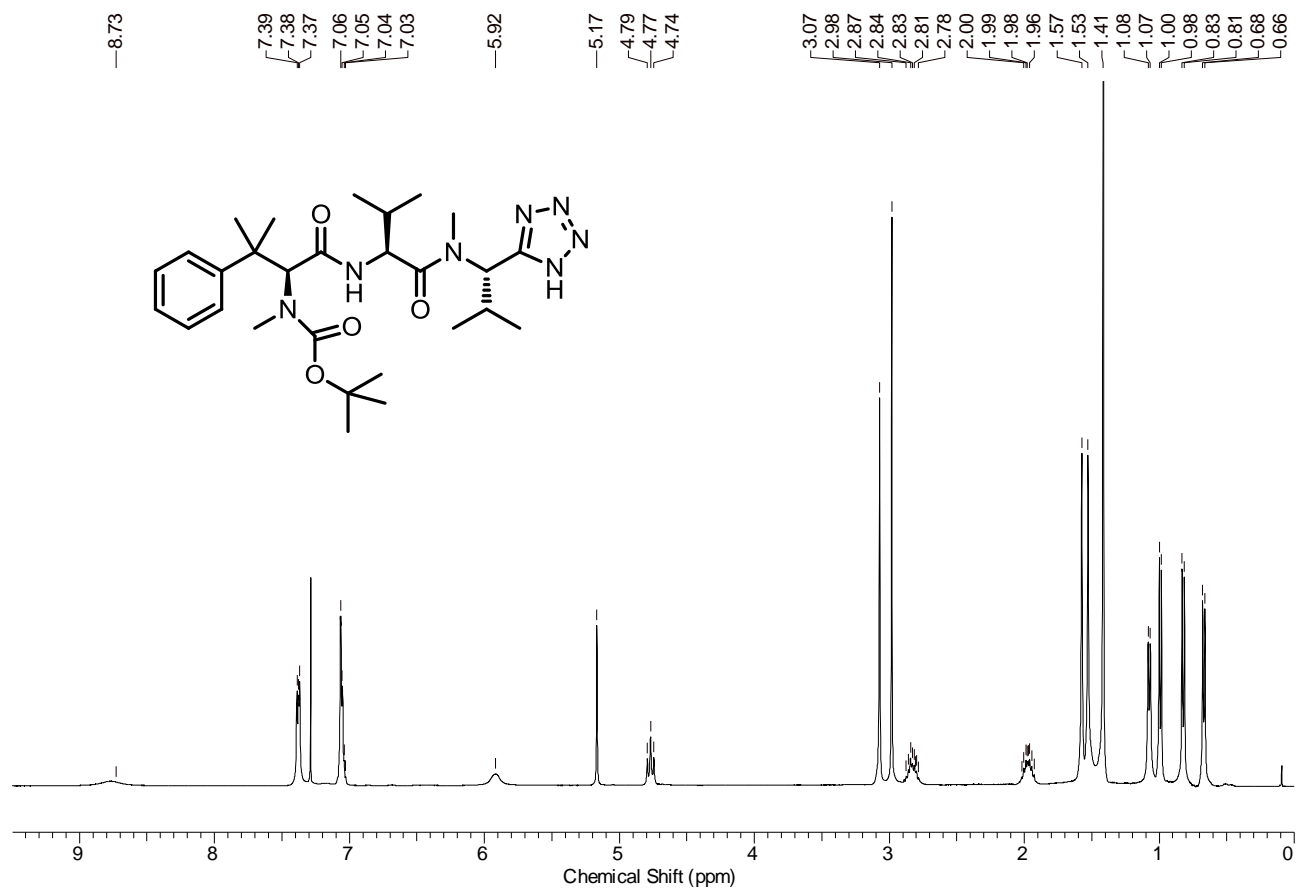
# Compound 6



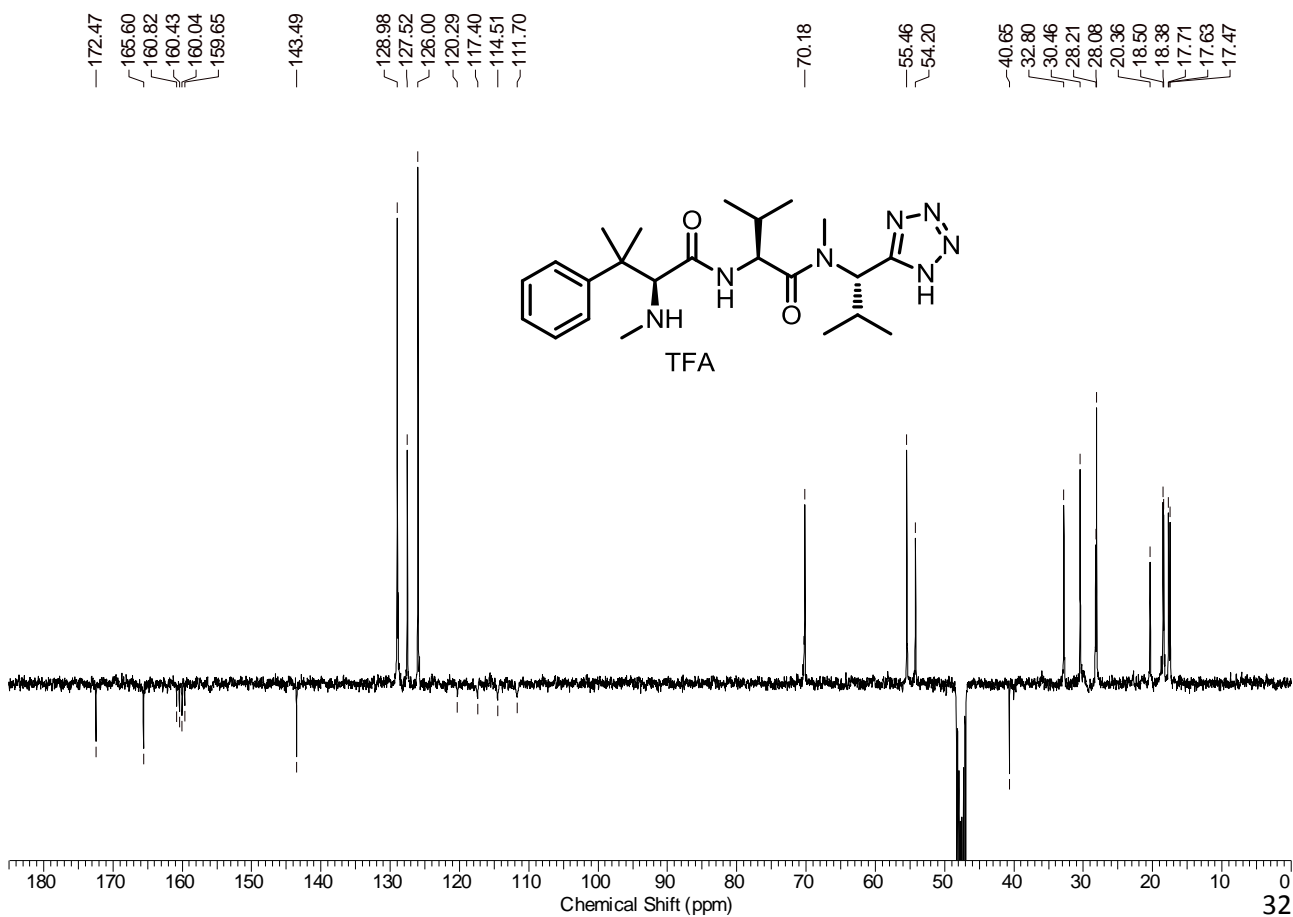
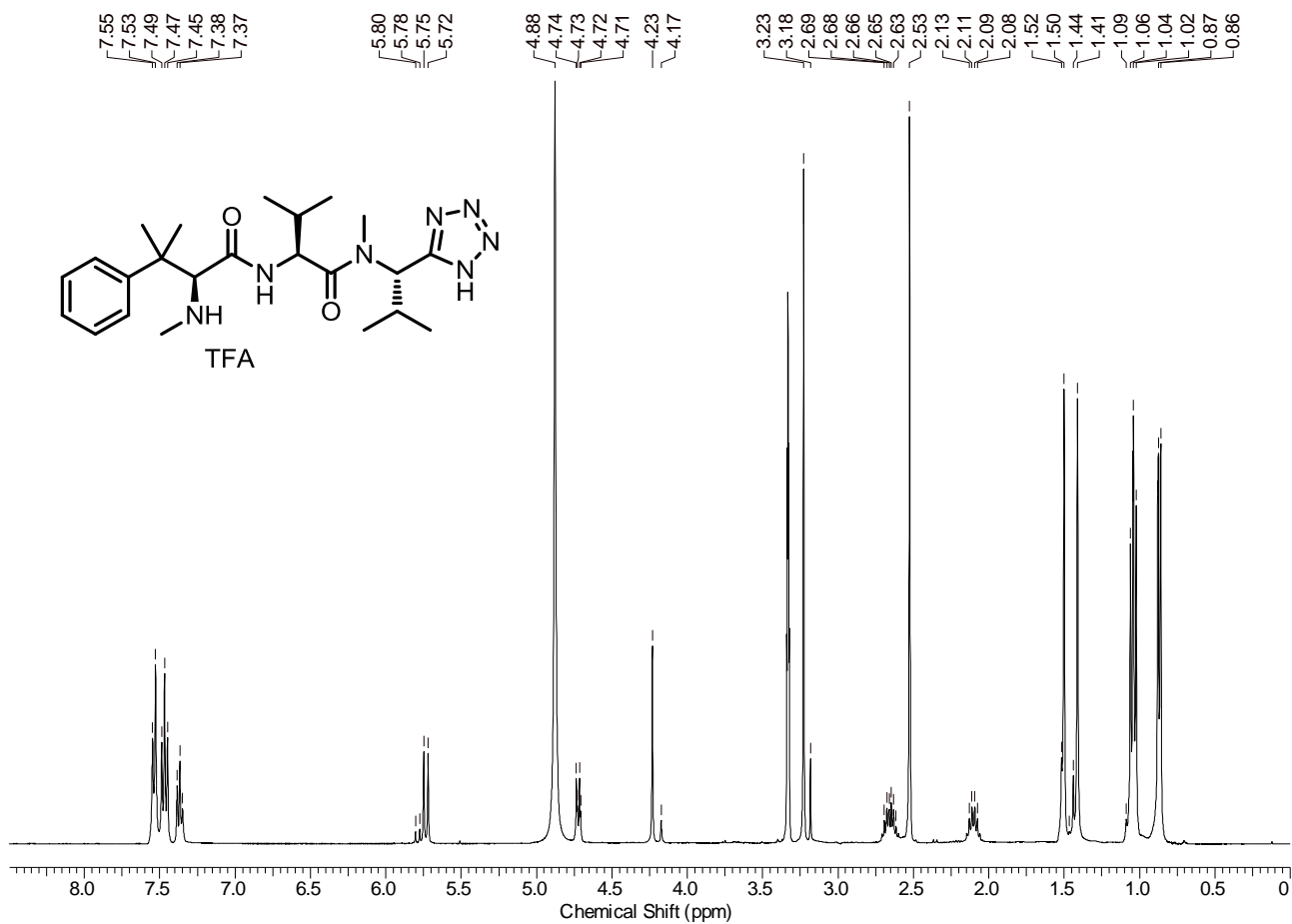
# Compound 29



# Compound 35

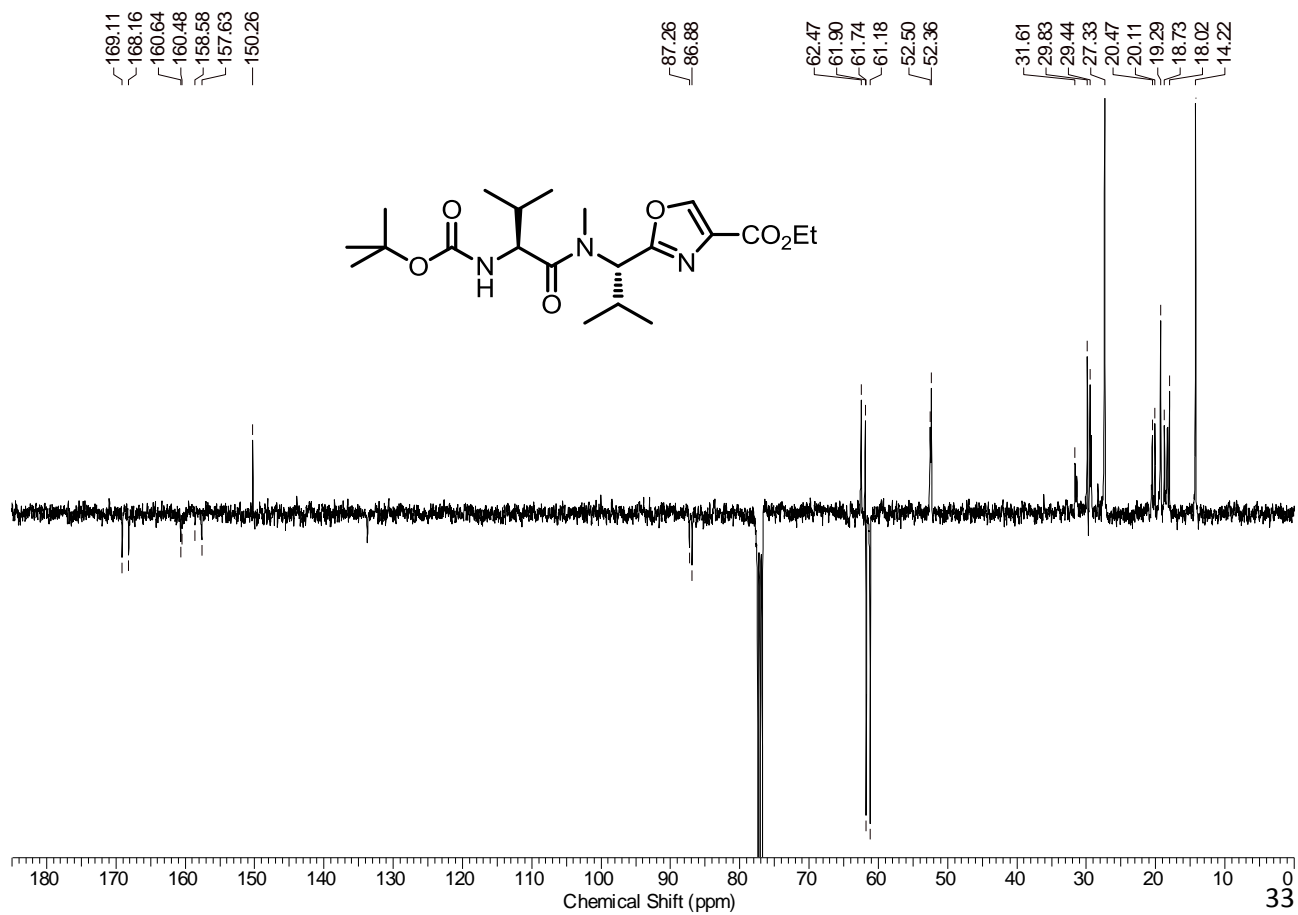
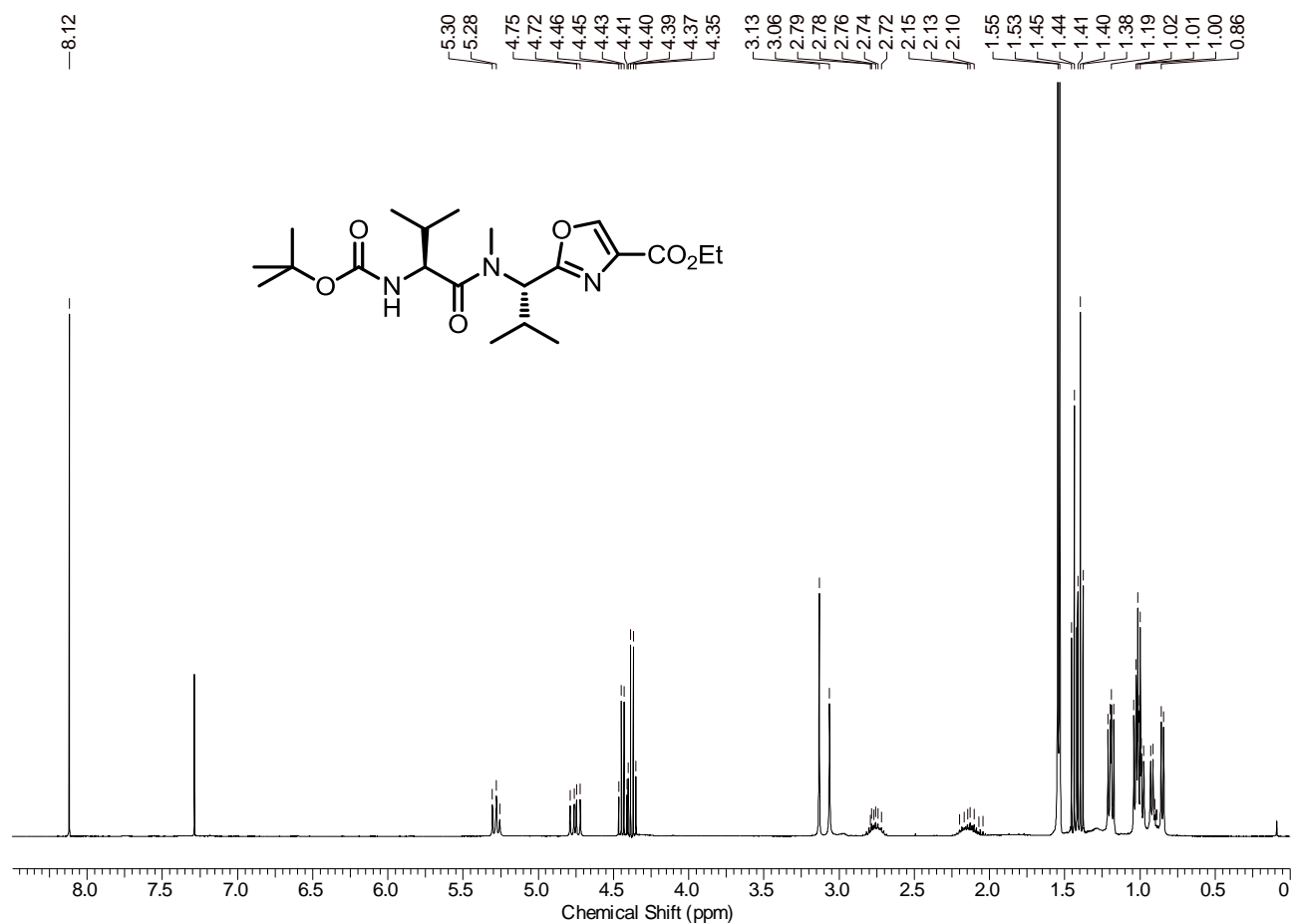


# Compound 7

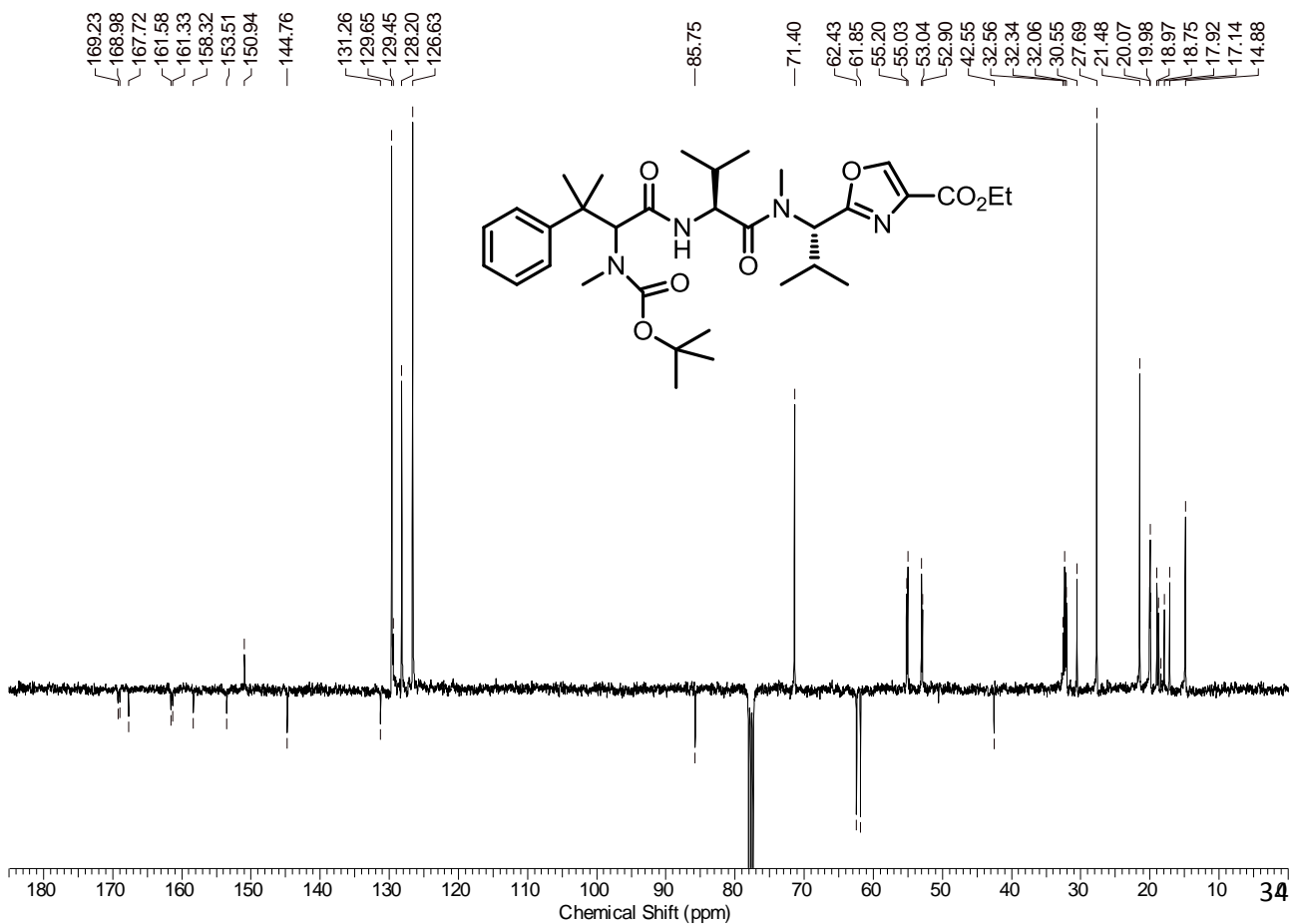
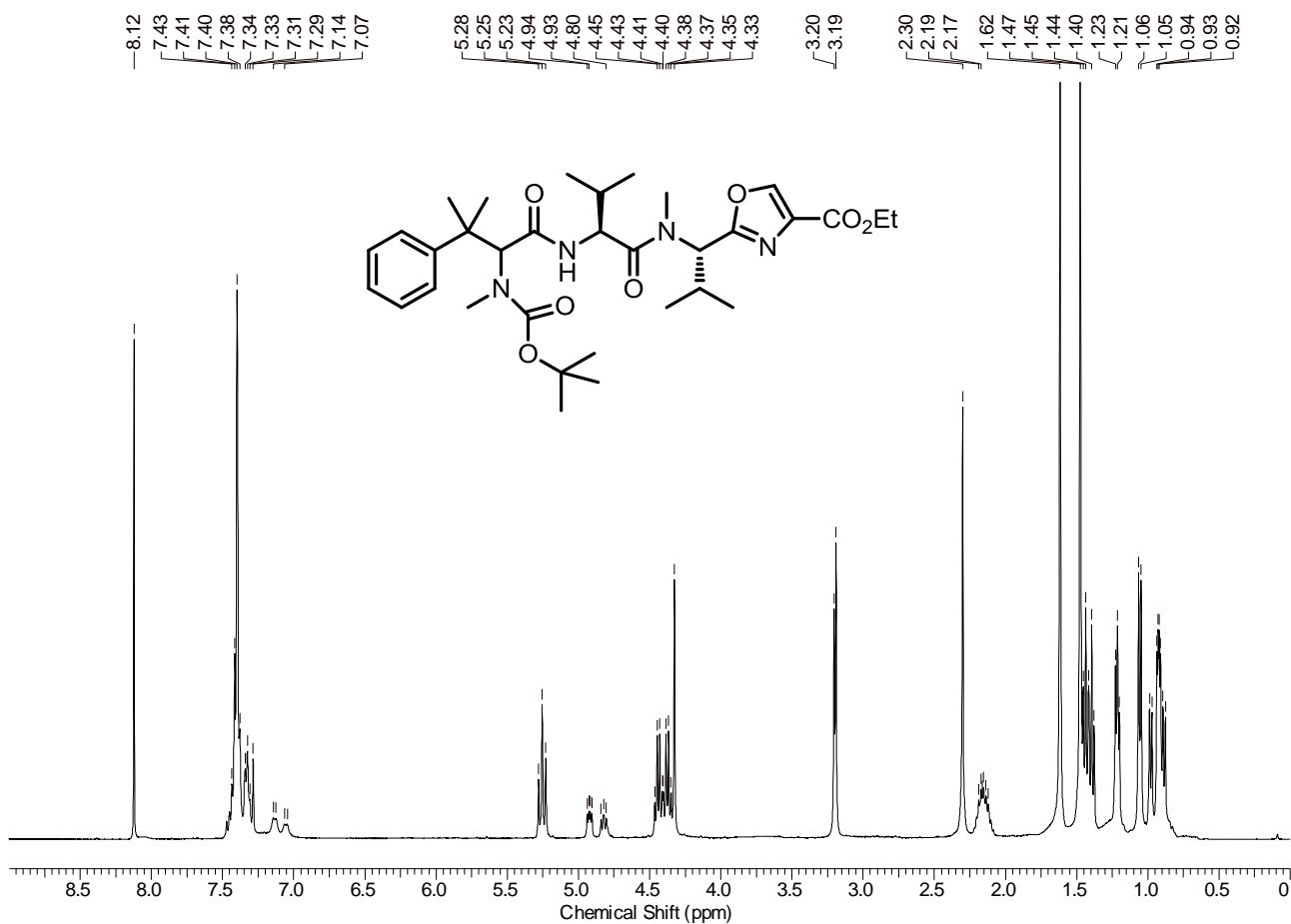




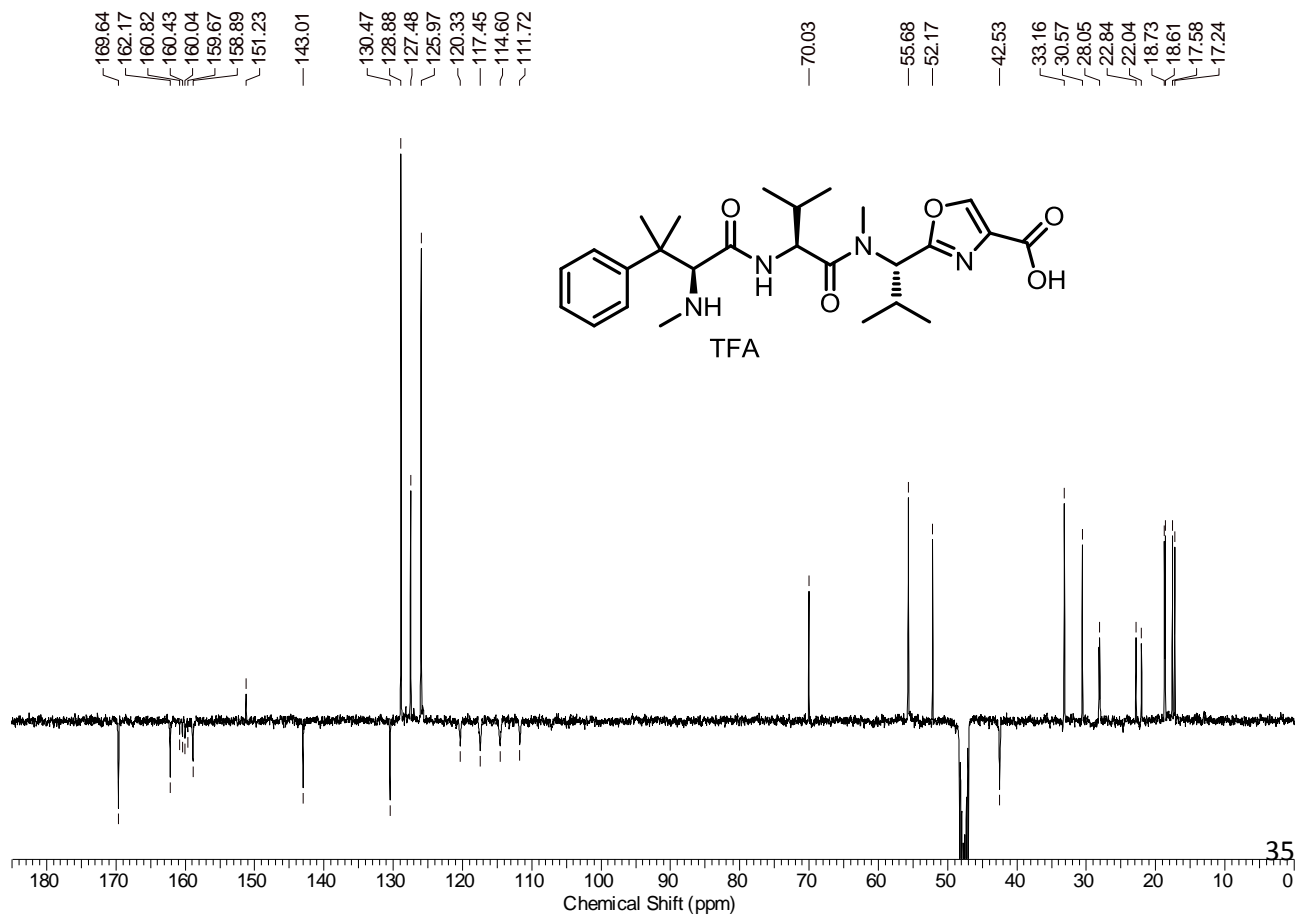
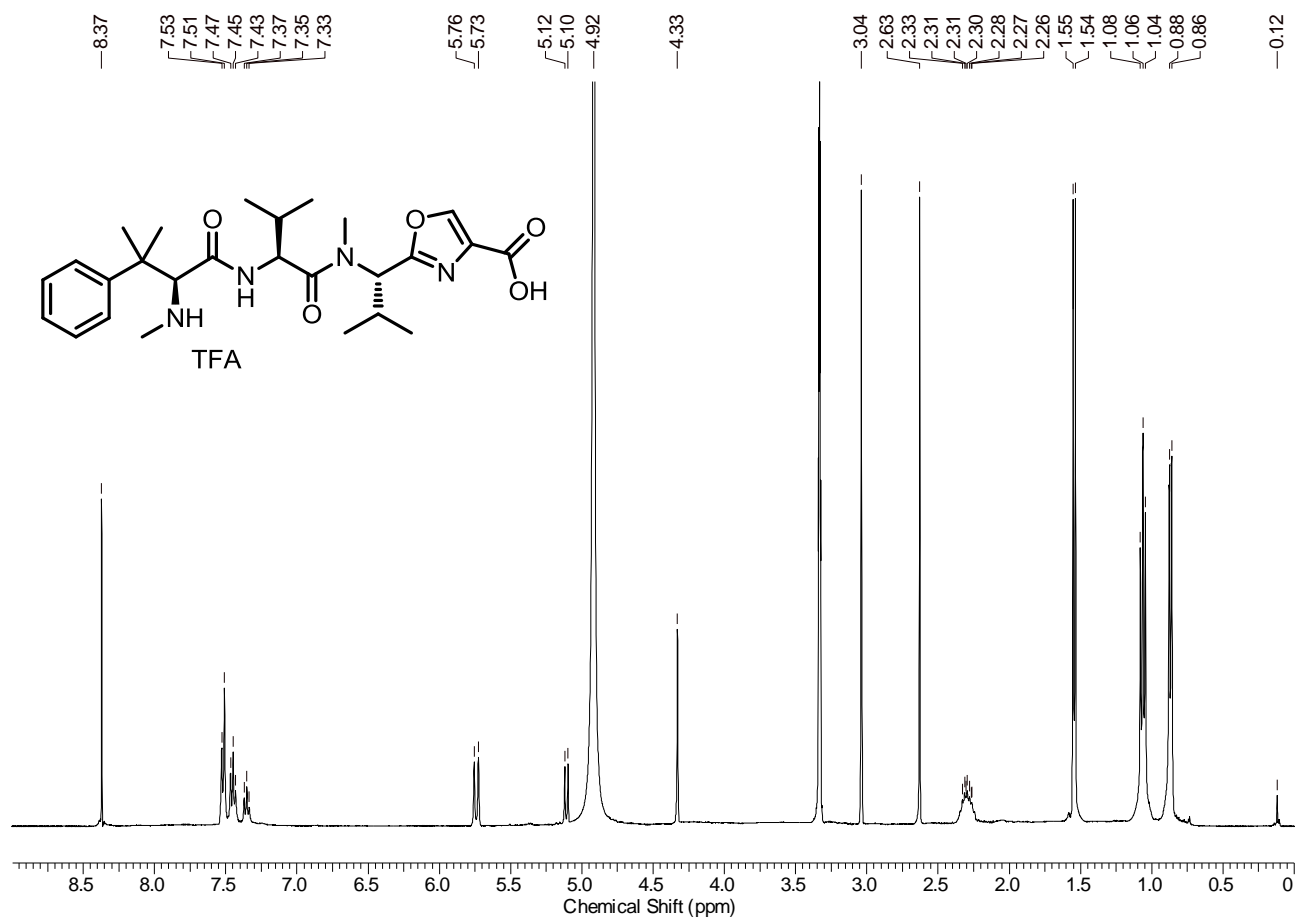
# Compound 30



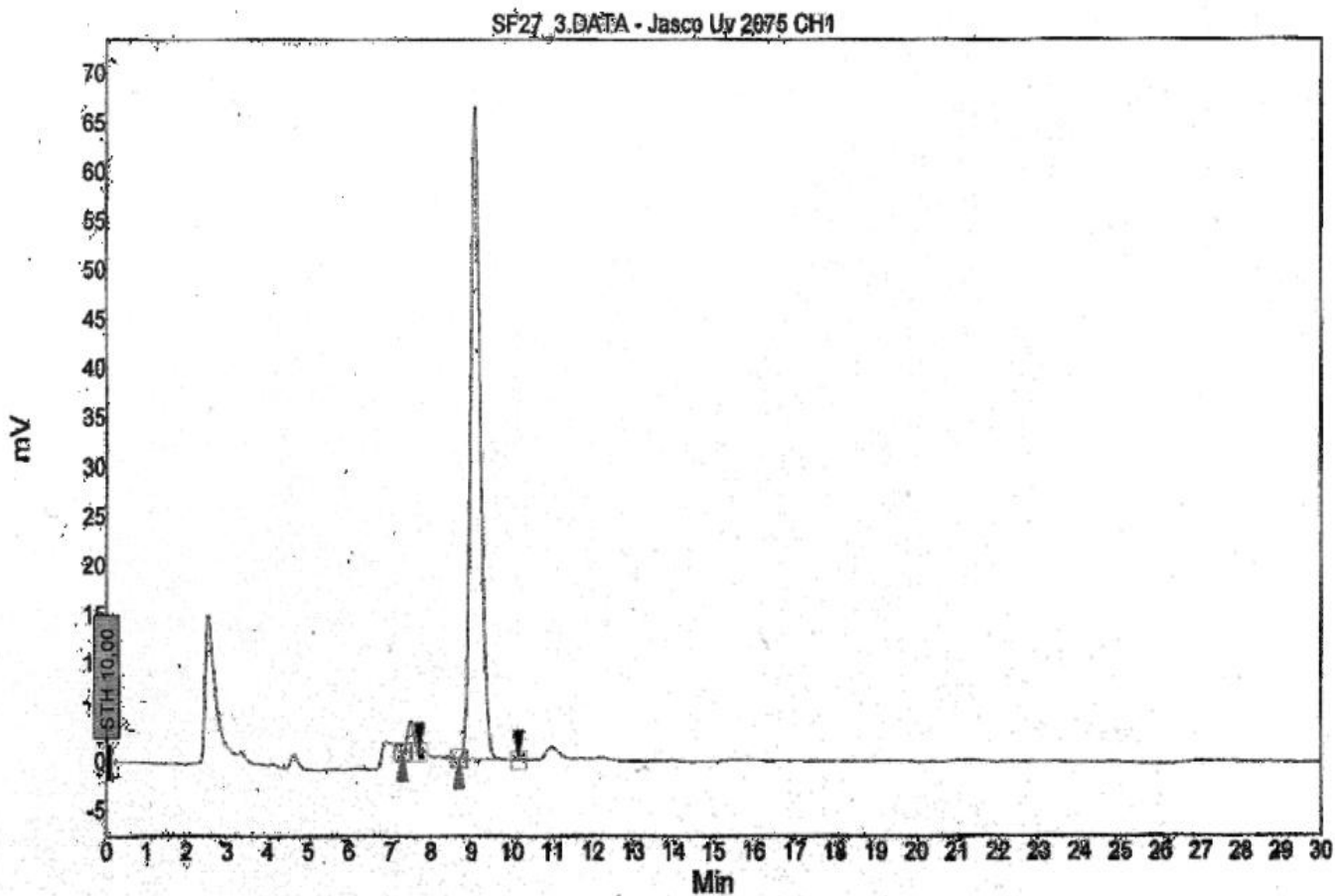
# Compound 36



# Compound 8



HPLC for compound **12** (Chiralcel OD-H, 98:2 *n*-hexane/isopropanol)



Name	Start	Time	End	Height	Area	Area %
	[Min]	[Min]	[Min]	[mV]	[mV.min]	[%]
R	7,299	7,500	7,719	3,100	0,500	2,843
S	8,687	9,075	10,157	66,400	18,800	97,157
				69,500	19,300	100,000