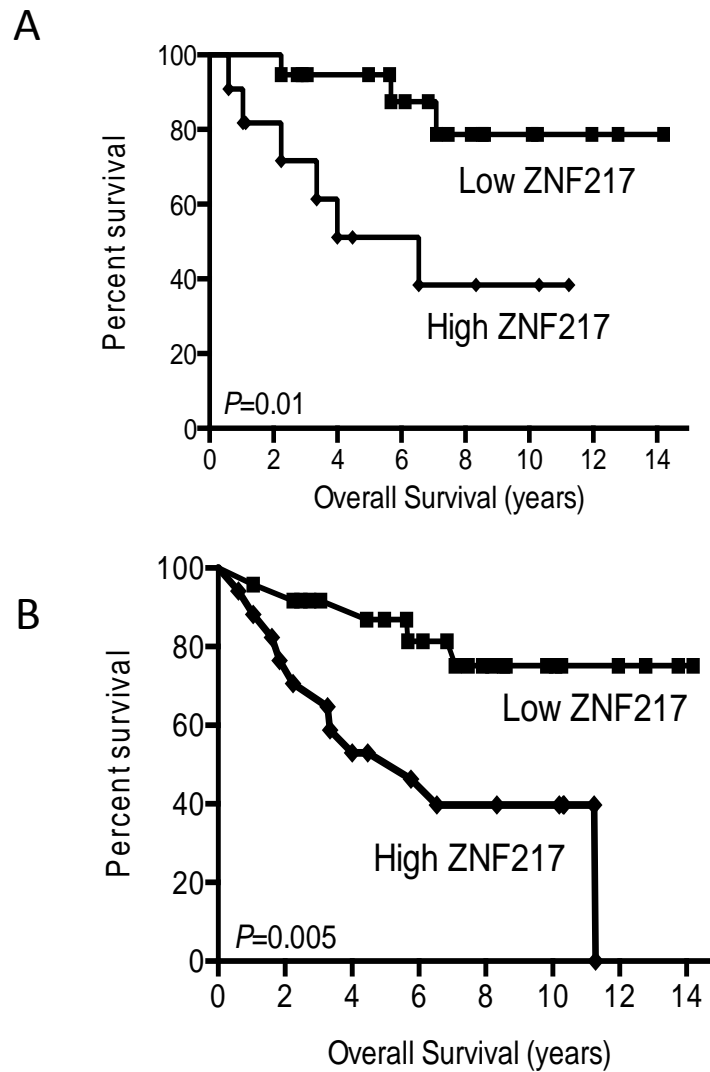


Frietze, Supplemental Figure 8



Supplemental Figure 8. Basal and ER- patient cohorts

A) Overall survival of basal subtype patients (n=30) based on ZNF217 expression from primary tumors for low (n=19) versus high (n=11) ZNF217 expression (P=0.01; Logrank). **B)** Overall survival in ER- patients based on ZNF217 expression for low ZNF217 (n=24) versus high ZNF217 (n=17) (P=0.005; Logrank). Data was sorted first by ZNF217 expression using the median cutoff. Then the data was sorted to identify the ZNF217 high patients and the ZNF217 low patients who were ER- or basal patients. Datasets from Chin et al., 2006.