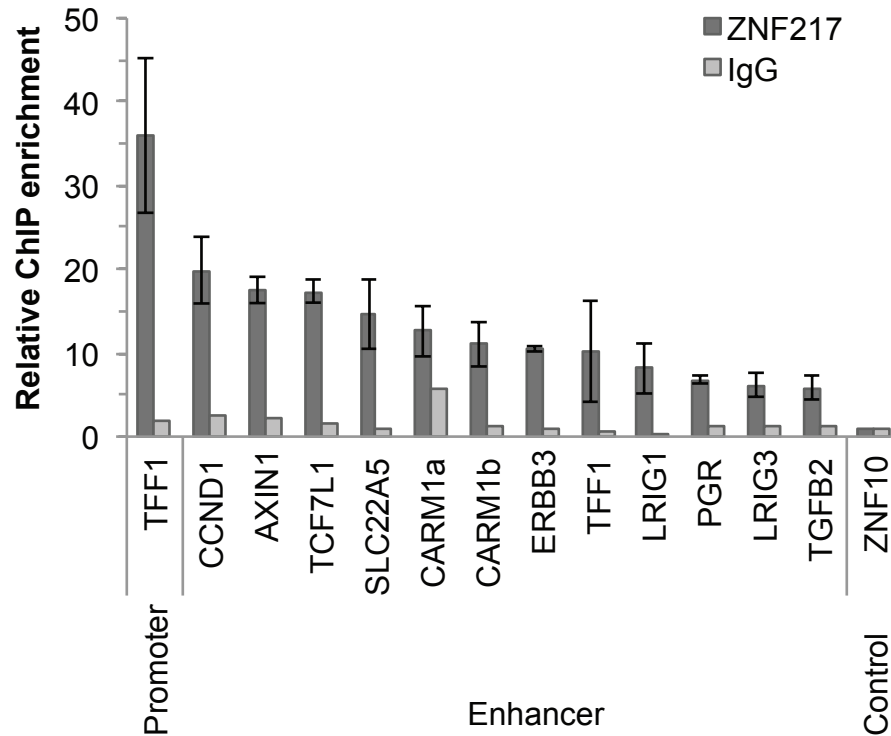
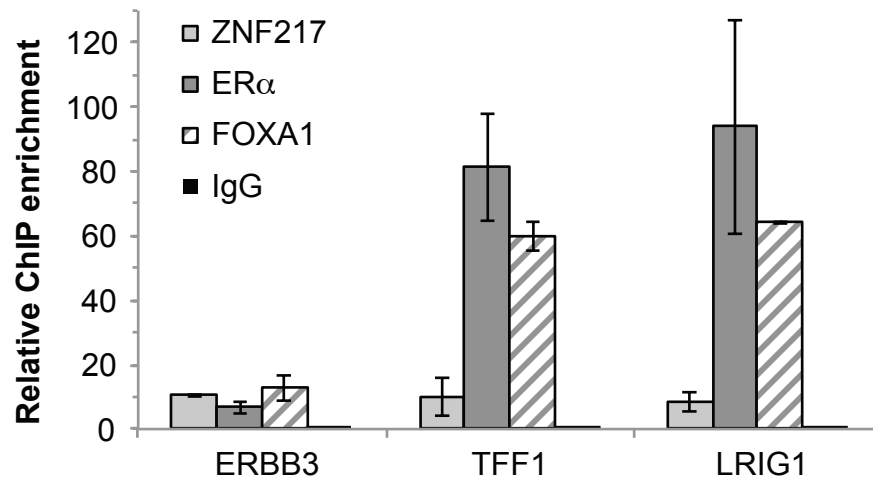


A**B**

Supplemental Figure 1. ChIP-qPCR confirming TF binding sites identified by ChIP-seq.

(A) Panel of ZNF217-bound distal sites confirmed by ChIP-qPCR. **(B)** Relative TF ChIP enrichment at the ER α target genes *ERBB3*, *TFF1*, and *LRIG1*. ChIP assays were performed on two independent biological replicates using the following antibodies ZNF217, ER α and FOXA1. IgG was used as a control. Relative DNA enrichment was calculated relative to DNA input and using the non-target ZNF10 locus as a negative control.