

Vallejo-Marín, M. *et al.* 2014. Recurrent modification of floral morphology in heterantherous *Solanum* reveals a parallel shift in reproductive strategy. *Phil. Trans. R. Soc. B.* **369** doi: 10.1098/rstb.2013.0256.

Supplementary material

Table S1. Sampled localities of the six taxa of *Solanum* Section *Androceras* studied here. Taxonomic classification follows Whalen (1979). Only one accession number is given for each locality.

Species	Accessions	Localities	Latitude (N)	Longitude (W)	Elevation (m)
<u>Series Androceras</u>					
<i>S. rostratum</i>	10s40	Peña de Bernal, Querétaro	20.74°	99.94°	2283
<i>S. fructo-tecto</i>	10-AH-3	Atitalaquia, Hidalgo	20.07°	99.22°	2090
<u>Series Pacificum</u>					
<i>S. grayi</i> var. <i>grandiflorum</i>	07s1	Río Piaxtla, Sinaloa	23.89°	106.62°	78
	07s197	Los Zapotes, Sinaloa	23.45°	106.47°	46
	08s50	Tejupilco, Edo. México	18.85°	100.13°	1532
<i>S. grayi</i> var. <i>grayi</i>	07s15	Highway 15-km 81, Sinaloa	25.34°	107.95°	93
	07s187	Intersection, Álamos, Sonora	27.00°	108.93°	385
<u>Series Violaceiflorum</u>					
<i>S. citrullifolium</i>	894750197	Nijmegen, Solanaceae Collection	NA	NA	NA
	894750332				
<i>S. heterodoxum</i> var. <i>heterodoxum</i>	10-FZ-24	Fresnillo, Zacatecas	23.10°	102.80°	2154

Table S2. Loadings of the principal component analysis of 10 floral traits across six taxa in *Solanum* Section *Androceras*.

Trait	PC1	PC2	PC3	PC4	PC5	PC6	PC7	PC8	PC9	PC10
Corolla width	0.648	0.21	0.52	0.503	0.008	-0.106	0.01	0.009	-0.023	0.011
Corolla length	0.617	0.298	-0.252	-0.658	0.177	0.012	-0.03	-0.01	0.04	0
PA width	0.037	-0.109	0.023	-0.099	-0.049	-0.129	0.101	-0.165	-0.943	0.178
PA length	0.227	-0.221	-0.337	0.114	-0.434	-0.221	0.563	-0.422	0.201	-0.001
FA width	0.018	-0.022	0.001	-0.012	-0.012	-0.041	0.045	0.031	-0.176	-0.982
FA length	0.123	-0.168	-0.25	0.08	-0.092	-0.324	0.184	0.856	-0.059	0.065
Distance PA-FA	0.162	-0.069	0.003	-0.067	-0.763	0.489	-0.344	0.143	-0.068	-0.004
Distance FA-stigma	0.167	-0.363	-0.012	0.082	0.356	0.718	0.421	0.109	-0.05	0.007
Distance PA-stigma	0.076	-0.649	0.548	-0.433	-0.029	-0.233	-0.047	-0.007	0.166	-0.001
Style length	0.264	-0.468	-0.434	0.295	0.243	-0.094	-0.582	-0.168	-0.013	-0.017
Proportion of variance explained	0.8805	0.0687	0.0156	0.0136	0.0083	0.0073	0.0037	0.0014	0.0007	0.0001
Cumulative proportion of variance	0.8805	0.9492	0.9648	0.9784	0.9867	0.9940	0.9977	0.9992	0.9999	1.0000

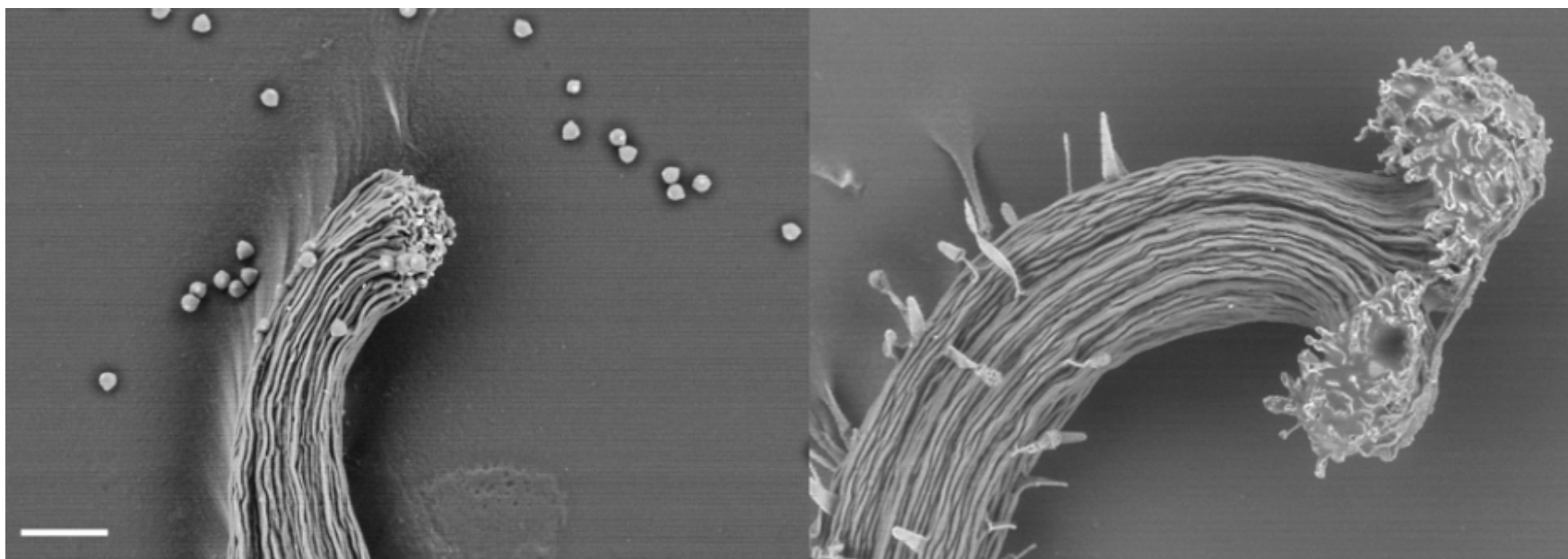


Figure S1. Electron micrograph of the stigma of *Solanum rostratum* (left) and *S. fructo-tecto* (right). Notice the pollen grains in the image for *S. rostratum* (Bar = 100 μm ; Zeiss, EVOMA15; 20 kV, WD = 7.5 mm, 63 Pa).