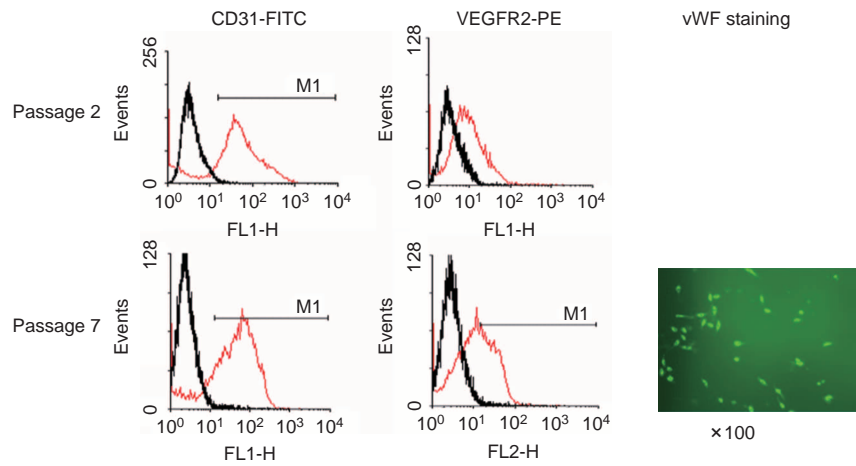


**Supplemental Figure 1** Binding curves of VEGF and antibodies by Biacore analysis. VEGF, vascular endothelial growth factor.



**Supplemental Figure 2** Identification of HUVEC (passages 2 and 7; CD31, VEGFR2 and vWF markers were detected). In this work, we used passages 2–7 of HUVEC in relative assays. HUVEC, human umbilical vein endothelial cell; VEGF, vascular endothelial growth factor.

**Supplemental Table 1** The mean and the standard deviation value of transwell (Figure 5b and c) and tube formation assays (Figure 5d and e)

<i>Transwell assay (cell counting)</i>				
	0 (control)	0.08 µg/ml	0.8 µg/ml	8 µg/ml
MIL60	182.1±18.9	142.2±7.3	87.6±14.3*	49.4±16.4*
Avastin	182.1±18.9	163.8±8.3	94.6±20.9*	55.8±18.9*
<i>Tube formation (µm per field)</i>				
	0 (control)	0.02 µg/ml	0.2 µg/ml	2 µg/ml
MIL60	1734.2±404.2	1420.8±298.4	882.1±145.9*	509.8±78*
Avastin	1734.2±404.2	1621.5±119.4	1042.4±133.5*	497.9±83.4*

\*  $P < 0.05$ .