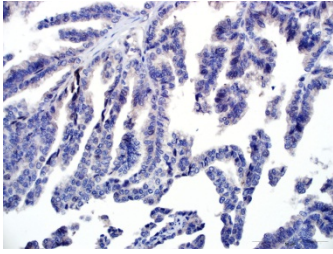
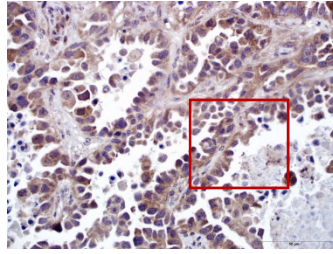


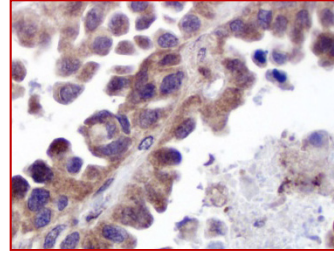
Adenocarcinoma  
(Ski-negative)



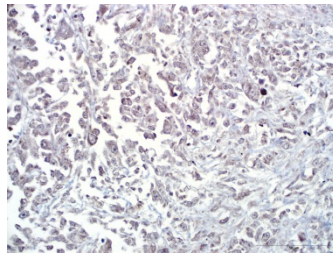
Adenocarcinoma  
(Ski-positive)



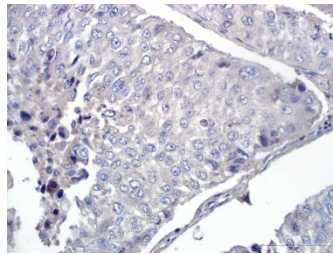
Adenocarcinoma  
(Ski-positive)



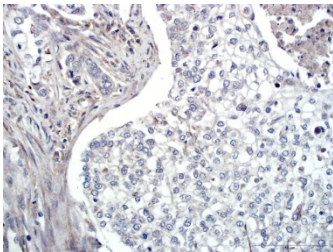
Bronchioloalveolar carcinoma  
(Ski-negative)



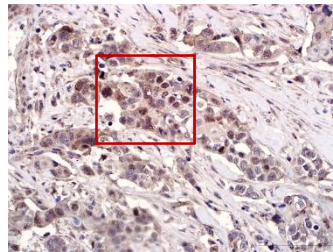
Large cell carcinoma  
(Ski-negative)



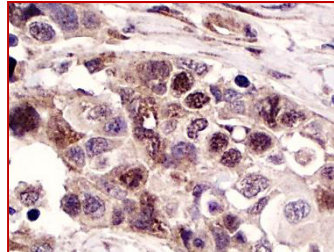
Squamous cell carcinoma  
(Ski-negative)



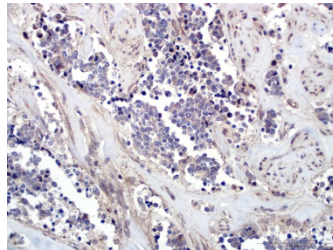
Squamous cell carcinoma  
(Ski-positive)



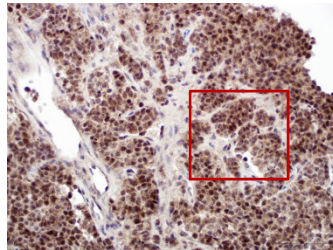
Squamous cell carcinoma  
(Ski-positive)



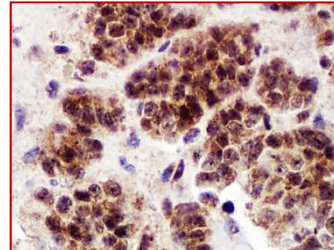
Atypical carcinoid  
(Ski-negative)



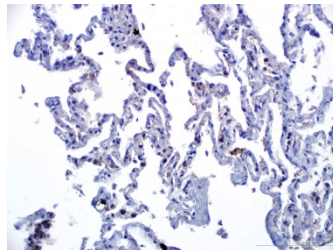
Atypical carcinoid  
(Ski-positive)



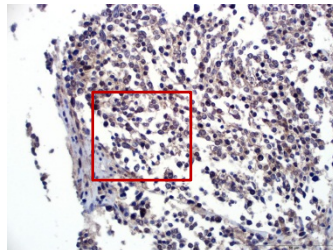
Atypical carcinoid  
(Ski-positive)



Normal lung  
(Ski-negative)



Small cell lung carcinoma  
(Ski-positive)



Small cell lung carcinoma  
(Ski-positive)

