

Neuron

Off-Target Effect of doublecortin-family shRNA on Neuronal Migration is Associated with Endogenous MicroRNA Dysregulation --Manuscript Draft--

Manuscript Number:	NEURON-D-14-00141R2
Full Title:	Off-Target Effect of doublecortin-family shRNA on Neuronal Migration is Associated with Endogenous MicroRNA Dysregulation
Article Type:	Report
Keywords:	doublecortin, dcx, dcl1, dicer, shRNA, miRNA, off-target, migration
Corresponding Author:	Joseph G. Gleeson University Of California, San Diego La Jolla, CA UNITED STATES
First Author:	Seung Tae Baek
Order of Authors:	Seung Tae Baek Geraldine Kerjan Stephanie L. Bielas Ji Eun Lee Ali G. Fenstermaker Gaia Novarino Joseph G. Gleeson
Abstract:	Acute gene inactivation using short hairpin RNA (shRNA, knockdown) in developing brain is a powerful technique to study genetic function, however, discrepancies between knockdown and knockout murine phenotypes have left unanswered questions. For example, doublecortin (Dcx) knockdown but not knockout shows a neocortical neuronal migration phenotype. Here we report that in utero electroporation of shRNA, but not siRNA or miRNA to Dcx demonstrates a migration phenotype in Dcx knockouts akin to the effect in wildtype mice, suggesting shRNA-mediated off-target toxicity. This effect was not limited to Dcx, as it was observed in Dcl1 knockouts, as well as with a fraction of scrambled shRNAs, suggesting a sequence-dependent but not sequence-specific effect. Profiling RNAs from electroporated cells showed a defect in endogenous let7 miRNA levels, and disruption of let7 or Dicer recapitulated the migration defect. The results suggest that shRNA-mediated knockdown can produce untoward migration effects by altering endogenous miRNA pathways.
Suggested Reviewers:	<p>Susan K McConnell, PhD Susan B. Ford Professor, Stanford suemcc@stanford.edu Expertise: Cell biology and neuronal migration. Example publication: Shieh JC, Schaar BT, Srinivasan K, Brodsky FM, McConnell SK. Endocytosis regulates cell soma translocation and the distribution of adhesion proteins in migrating neurons. PLoS One. 2011 Mar 22;6(3):e17802.</p> <p>Mary E. Hatten, PhD Frederick P. Rose Professor, The Rockefeller University hatten@mail.rockefeller.edu Expertise: One of the leaders in neuronal migration. Example publication: Solecki DJ, Trivedi N, Govek EE, Kerekes RA, Hatten ME. Myosin II motors and F-actin dynamics drive the coordinated movement of the centrosome and soma during CNS glial-guided neuronal migration. Neuron. 2009 Jul 16;63(1):63-80</p> <p>Anthony Wynshaw-Boris, MD PhD James Jewell Professor of Genetics, Case Western Reserve ajw168@case.edu Expertise: Murine knockout phenotypes, clinical genetics, neuronal migration</p>

Bershteyn M, Hayashi Y, Desachy G, Hsiao EC, Sami S, Tsang KM, Weiss LA, Kriegstein AR, Yamanaka S, Wynshaw-Boris A. Example publications: Cell-autonomous correction of ring chromosomes in human induced pluripotent stem cells. Nature. 2014 Jan 12. doi: 10.1038/nature12923.
Moon HM, Youn YH, Pemble H, Yingling J, Wittmann T, Wynshaw-Boris A. LIS1 controls mitosis and mitotic spindle organization via the LIS1-NDEL1-dynein complex. Hum Mol Genet. 2014 Jan 15;23(2):449-66.

Kenneth S. Kosik, MD PhD
Professor, Neuroscience Research Institute, University of California, Santa Barbara
kenneth.kosik@lifesci.ucsb.edu
Expertise: microRNAs in neuronal development
Example publication: Kosik KS. Molecular biology: Circles reshape the RNA world. Nature. 2013 Mar 21;495(7441):322-4.

Beverly L. Davidson, PhD
Professor and Vice Chair, University of Iowa
beverly-davidson@uiowa.edu
Expertise: miRNA in neuronal development and degeneration
Example publication: Fineberg SK, Kosik KS, Davidson BL. MicroRNAs potentiate neural development. Neuron. 2009 Nov 12;64(3):303-9.

Bernardo Sabatini, PhD
Investigator HHMI, Harvard Medical School
bernardo_sabatini@hms.harvard.edu
Expertise: Neuronal circuitry, molecular biology, off-target effects on neurons
Example publication: Alvarez VA, Ridenour DA, Sabatini BL. Retraction of synapses and dendritic spines induced by off-target effects of RNA interference. J Neurosci. 2006 Jul 26;26(30):7820-5.

Tallie Z. Baram, MD PhD
Danette Shepard Professor of Neurological Sciences, UC-Irvine
tallie@uci.edu
Expertise: Neural developmental disorders, epilepsy, neuronal migration
Example publication: Noam Y, Ehrenguber MU, Koh A, Feyen P, Manders EM, Abbott GW, Wadman WJ, Baram TZ. Filamin A promotes dynamin-dependent internalization of hyperpolarization-activated cyclic nucleotide-gated type 1 (HCN1) channels and restricts Ih in hippocampal neurons. J Biol Chem. 2014 Jan 8.

Eva Anton, PhD
Professor, and Associate Director Neuroscience Center, University of North Carolina
anton@med.unc.edu
Expertise: Neuronal migration
Example publication: Guo J, Anton ES. Decision making during interneuron migration in the developing cerebral cortex. Trends Cell Biol. 2014 Jan 2. pii: S0962-8924(13)00224-9

Jamel Chelly, MD PhD
Professor, Université Paris Descartes
jamel.chelly@inserm.fr
Expertise: Cloned the doublecortin gene
Example publication: Bahi-Buisson N, Souville I, Fourniol FJ, Toussaint A, Moores CA, Houdusse A, Lemaitre JY, Poirier K, Khalaf-Nazzal R, Hully M, Leger PL, Elie C, Boddaert N, Beldjord C, Chelly J, Francis F; SBH-LIS European Consortium. Example publication: New insights into genotype-phenotype correlations for the doublecortin-related lissencephaly spectrum. Brain. 2013 Jan;136(Pt 1):223-44.

Christopher A. Walsh, MD PhD
HHMI & Bullard Professor of Pediatrics and Neurology, Harvard Medical School
Christopher.Walsh@childrens.harvard.edu
Expertise: Identified the doublecortin gene
Example publication: Liu JS, Schubert CR, Fu X, Fourniol FJ, Jaiswal JK, Houdusse A, Stultz CM, Moores CA, Walsh CA. Molecular basis for specific regulation of neuronal kinesin-3 motors by doublecortin family proteins. Mol Cell. 2012 Sep 14;47(5):707-21.

Opposed Reviewers:

4/15/2014

Katja Brose, Ph.D.
Editor, Neuron

Re: NEURON-D-14-00141R2

Dear Dr. Brose,

Thank you very much the positive news on our manuscript “Off-Target Effect of doublecortin-family shRNA on Neuronal Migration is Associated with Endogenous MicroRNA Dysregulation”, which we have now revised and uploaded according to Neuron’s requirements. Please let me if there are any questions or remaining issues.

All best regards,



Joseph G. Gleeson

Joseph G. Gleeson, M.D.
Investigator

Neurogenetics Laboratory
University of California, San Diego
Leichtag 485
9500 Gilman Drive
La Jolla, CA 92093-0665
Tel 858-822-3535 jogleeson@ucsd.edu

NEURON-D-14-00141R2
Response to Reviewer Criticism

NA

Off-target effect of *doublecortin*-family shRNA on neuronal migration associated with endogenous microRNA dysregulation

Seung Tae Baek^{1*}, Geraldine Kerjan^{1*}, Stephanie L. Bielas¹, Ji Eun Lee¹, Ali G. Fenstermaker¹, Gaia Novarino¹, Joseph G. Gleeson¹

¹Neurogenetics Laboratory Howard Hughes Medical Institute, Department of Neurosciences, University of California, San Diego La Jolla, CA 92093

*Contributed equally

Address for correspondence:

Howard Hughes Medical Institute
University of California, San Diego
9500 Gilman Drive
La Jolla, CA 92093-0665
E-mail: jogleeson@ucsd.edu
Tel: (858) 822-3535

Character count (with spaces): 39,724

Keywords: doublecortin, dcx, shRNA, miRNA, off-target, migration

Running title: shRNA off-target effects

Figure number: 4

Supplemental figure number: 3

SUMMARY

Acute gene inactivation using short hairpin RNA (shRNA, knockdown) in developing brain is a powerful technique to study genetic function, however, discrepancies between knockdown and knockout murine phenotypes have left unanswered questions. For example, *doublecortin* (*Dcx*) knockdown but not knockout shows a neocortical neuronal migration phenotype. Here we report that *in utero* electroporation of shRNA, but not siRNA or miRNA to *Dcx* demonstrates a migration phenotype in *Dcx* knockouts akin to the effect in wildtype mice, suggesting shRNA-mediated off-target toxicity. This effect was not limited to *Dcx*, as it was observed in *Dclk1* knockouts, as well as with a fraction of scrambled shRNAs, suggesting a sequence-dependent but not sequence-specific effect. Profiling RNAs from electroporated cells showed a defect in endogenous *let7* miRNA levels, and disruption of *let7* or *Dicer* recapitulated the migration defect. The results suggest that shRNA-mediated knockdown can produce untoward migration effects by altering endogenous miRNA pathways.

HIGHLIGHTS

- The effect of *Dcx* shRNA is partly mediated by off-target effects.
- A substantial subset of scrambled shRNAs produce migration defects.
- *Dcx* shRNA induces disruption of miRNA levels.
- Migration defects recapitulated by disrupting *let7* or *Dicer* function.

ETOC/"In Brief" Paragraph

Baek et al. resolve the discrepancy between *doublecortin* knockout and knockdown murine cortical phenotypes, attributed to dysregulation of endogenous microRNAs.

INTRODUCTION

MicroRNAs can regulate nervous system development, survival, function, and plasticity (Fineberg et al., 2009). Recognition of targets by microRNAs generally involves the 5' end of the microRNA spanning nucleotides 2-8 (the seed sequence) associating with complementary mRNA targets, allows a single microRNA to potentially regulate many mRNA targets. For most miRNAs, the primary RNA polymerase II-mediated transcript (pri-miRNA) is processed in the nucleus by Drosha/DGCR8 to generate a ~70 nt pre-miRNA, then exported to the cytoplasm by Exportin-5. The pre-miRNA is further processed into a 21-23 nt duplex by the cytoplasmic RNase Dicer, and one or both strands (the miRNA guide strand or the miRNA* passenger strand) is then loaded into the Ago-protein-containing RNA-induced silencing complex (RISC). Within RISC, the single-stranded mature miRNA forms partial complementary contacts on target mRNAs, leading to translation inhibition and mRNA degradation (Yates et al., 2013).

RNA interference (RNAi) takes advantage of this pathway for acute gene inactivation, and applied in the context of the mammalian *in utero* brain electroporation, has opened up the possibility of studying genetic requirements (Takahashi et al., 2002). DNA plasmids introduced into the lateral ventricle allow expression of shRNAs in neuroblasts specifically in one hemisphere, used to study the effects of genetic loss-of-function in hundreds of publications. It is a particularly powerful technique to study migration, because electroporation is specifically targeted to apical progenitors, so that the effect can be assessed directly by quantifying distance that neurons have migrated from the electroporation site (Kerjan and Gleeson, 2007; Marchetti et al., 2010).

In most such shRNA reports, the results complement data from mouse knockout (KO) experiments, but there are also many examples where the germline KO does not show the effect observed in the acute shRNA-mediated knockdown (KD). A good example is *doublecortin (Dcx)* and *doublecortin like kinase 1 (Dclk1)* genes, where the single KO mice show no neocortical defects whereas acute KD of either shows clear defects (Bai et al., 2003; Corbo et al., 2002; Koizumi et al., 2006; Pramparo et al., 2010). Other examples include the *beta-amyloid precursor protein* (Young-Pearse et al., 2007) and *EF-hand domain-containing protein 1* (de Nijs et al., 2009; Suzuki et al., 2009) when compared directly. The evidence that migration phenotypes are evident with two or more shRNAs targeting the same transcript, and that the effects can be rescued by re-introduction of non-targetable expressing plasmid have provided evidence that the effects are gene-specific (Bai et al., 2003; Manent et al., 2009), yet the controversy still exists as to how a KD has a phenotype when the germline KO shows none, especially considering that KD usually preserves some percent of protein expression.

Multiple potential theories, some partially overlapping, have been proposed to explain this discrepancy: i] Cells may respond differently following acute KD compared with a chronic KO gene deletion (Gotz, 2003). ii] Acute KD might not leave enough time to evoke upregulation of compensatory mechanisms. iii] Acute KD may leave some transcripts intact, compared with KO, which might somehow produce a more severe phenotype. iv] Acute KD might induce off-target effects, effects on endogenous siRNA processing, or inflammatory responses. While direct evidence for any of the first three theories is lacking, the effect of off-target or inflammatory reaction to shRNAs has been well documented (Alvarez et al., 2006; Fedorov et al., 2006; Olejniczak et al., 2011).

Here we put these models directly to test by evaluating the basis in the *Dcx* family, where the phenomenon was first described.

RESULTS

Neocortical migration defects in *Dcx* and *Dclki* knockdown but not knockout

The *Dcx* KO allele that has exons 2-3 of 7 replaced with *LacZ*, and thus produces a stable mRNA without the 3' UTR, whereas the *Dclki* allele removes exon 3, predicting an unstable mRNA. Both result in null mutations with absent protein, and lack neocortical migration phenotype (Corbo et al., 2002; Koizumi et al., 2006). We verified this finding by electroporating a GFP-expression plasmid at E14.5, then assessed cellular distribution at E18.5 (Figure S1A-B), quantitated by: i] measuring the distribution of total GFP signal within either the cortical plate (CP) compared with the intermediate zone/subventricular zone (IZ/SVZ). ii] measuring the percentage of GFP+ cells within either the upper, middle or lower cortical plate (uCP, mCP, loCP). With the first method, wildtype (WT) controls ~30-40% of GFP cells were CP-localized, whereas the remainder localized in the IZ/SVZ (Figure S1E). With the second method, 55-60% of cells were positioned within the uCP, without difference between WT and either KO. Combined with published histology, BrdU birthdating and laminar marker distribution (Corbo et al., 2002; Deuel et al., 2006; Kappeler et al., 2006; Koizumi et al., 2006), we conclude that, with current methodologies in either KO, neocortical migration is not disrupted.

We similarly electroporated published shRNA-expressing constructs, the exact ones used in the key published papers, into WT brains to confirm migration defects (Bai et al., 2003; Koizumi et al., 2006). Two different shRNA-expressing constructs against *Dcx* and one against *Dclki* were electroporated into WT E14.5 embryos. As published, we found a significant migration defect for each of these vectors compared with control (Figure S1C-D, 12.2 or 18.1 vs. 36.8% of GFP+ in CP, or 27.9 or 22.9 vs. 57.8% of GFP+ cells in uCP, $p < 0.01$ for each comparison, Figure S1E-F). For the remainder of the study we use only the latter method of quantification.

Acute inactivation does not account for the *Dclki* shRNA phenotype

We tested whether acute gene inactivation using Cre electroporation into *Dclki*^{fllox/-} E14.5 embryos recapitulates the shRNA migration defect. This method induces recombination occurs within a few hours (Gitton et al., 2009), within roughly the same timeframe as shRNA-mediated silencing, and can report migration defects (Ohtaka-Maruyama et al., 2013). We injected a Cre-GFP plasmid with a DsRed2 expressing Cre-reporter plasmid, mixed in a 1:2 ratio to ensure that nearly every cell with the Cre-GFP plasmid would also carry the Cre reporter plasmid. DsRed2 reporter activity was evident in essentially every GFP+ cell (Figure S1H-K). We found that 79.5% of cells were located in the uCP by E18.5 in controls (either *Dclki*^{fllox/+} or *Dclki*^{+/-}), not statistically different from the 73.6% of cells in the uCP in *Dclki*^{fllox/-} embryos. Thus acute inactivation does not recapitulate the shRNA migration defect.

Differences in knockdown and knockout at least partly due to off-target effects but not inflammatory-mediated, nor sequence-specific

The most direct test whether shRNAs display off-target effects is to perform the KD experiment in the genetic KO background, in the absence of specific targets. We utilized

both the *Dcx* and *Dclki* germline KO for this experiment, electroporating the same plasmids used above to target the *Dcx* 3'UTR or the *Dclki* open reading frame. We observed that the scrambled shRNAs resulted in 55.6% of GFP+ cells in uCP in control littermates (pooled controls, [Figure 1](#)). Similar to results above, scrambled shRNAs resulted in 45.5% and 56.4% of GFP+ cells in uCP in *Dcx* and *Dclki* KOs, respectively, and *Dcx* and *Dclki* shRNAs resulted in 27.9% and 22.9% of GFP+ cells in uCP in WT littermates, respectively. The effect of the shRNAs on the KOs was striking, with 10.3% and 16.2% of GFP+ cells in uCP. The fact that the *Dclki* mRNA is unstable suggests that this effect does not require the presence of an intact mRNA. We conclude that the *Dcx* and *Dclki* shRNAs have an effect in the KO lines, supporting an off-target effect.

Numerous examples of shRNA off-target phenotypes related to inflammatory responses have been described (Kabilova et al., 2012). Major immunostimulatory triggers include dsRNA oligonucleotides longer than 29-30 bp and the presence of specific U-rich or G-rich sequences (Hornung et al., 2005). Although none of the siRNAs we used satisfy these requirements, we tested for possible activation of the inflammatory sensor protein kinase R (PKR) using a phospho-specific antibody (Gantier and Williams, 2007) and lymphocyte accumulation as reporters, but found none at either E16.5 or E18.5 ([Figure S2A-B](#)), suggesting that the off-target effect is not inflammatory-mediated.

To further investigate which components of the *Dcx* shRNA mediated the influence on migration, we generated chimeric shRNA constructs consisting of parts of the scrambled and parts of the *Dcx* shRNAs. A construct containing the same *Dcx* 3' UTR shRNA stem sequence but a scrambled hairpin loop sequence induced the same degree of migration defect as the *Dcx* shRNA (13.9% of GFP+ cells in the uCP, [Figure 2A-D](#)), whereas the scrambled stem sequence but the *Dcx* hairpin loop sequence behaved like scrambled shRNA (not shown). We repeated the experiment with the *Dcx* CDS shRNA sequence, which induced a very similar migration defect. We conclude that the off-target migration defect can be triggered by multiple shRNA sequences.

We reasoned that if the off-target effect on migration is not sequence-specific, then some subset of scrambled shRNAs should induce a migration defect as well. We thus cloned 9 additional scrambled shRNAs with purine/pyrimidine ratios similar to *Dcx* shRNA, not matching any predicted murine mRNA sequences ([Figure S2D](#)). We observed that about half of these scrambled shRNAs induced a migration defect in WT brain, in graded severity ([Figure 2E-H](#)). Four of the nine scrambled shRNAs showed statistically significant differences in migration. These results confirmed that the observed off-target effect of shRNA on migration is not sequence-specific but is likely sequence-dependent since not all scrambled shRNAs induced a migration phenotype. Overall, these observations indicate that cortical migration is very sensitive to off-target shRNA effects.

shmiRNA knockdown method does not produce the same off-target effects

Artificial RNAi utilizes endogenous miRNA processing pathways to achieve gene silencing. The vector driven shRNA hairpins are exported by Exportin-5 into the cytoplasm where they undergo steps similar to endogenous miRNA processing, including loading onto the RISC complex. Improper design and/or dosage of artificial RNAi tools have been shown to lead to disruptions in endogenous miRNA processing and subsequent off-target effects. For example several shRNAs were shown to saturate Exportin-5 and

cause downregulation of critical miRNAs, causing off-target toxicity (Grimm et al., 2006), but overexpression of Exportin-5 in *Dcx* shRNA KD cells did not rescue the migration defect (not shown).

The next-generation of shRNA vectors, named shmiRNAs, drive production of long RNA hairpins (about 200 nt long) with shRNAs embedded into endogenous miRNA loop and flanking sequences (Figure 3A), designed to undergo more natural miRNA processing including processing by Drosha/DGCR8. This method was shown previously to overcome at least some of the off-target effects of shRNA (Bauer et al., 2009). We thus embedded the *Dcx* 3' UTR and *Dcl1* CDS target sequences into murine miR-155 using the pcDNA6.2 GW vector (Chung et al., 2006), also encoding eGFP within the pre-miRNA expression cassette. The shmiRNA vectors resulted in depleted *Dcx* and *Dcl1* protein levels in a fashion similar to the traditional shRNA vectors in dissociated electroporated neurons (Figure 3B-E). Neither *Dcl1* nor either of two different *Dcx* shmiRNAs demonstrated a phenotype in WT embryos (scrambled 71%, *Dcx* and *Dcl1* 69.2%-70.9% GFP+ neurons in uCP, Figure 3F-J).

The complementary miRNA strand, termed the passenger or * strand, is typically destroyed, but improper recognition can lead to targeting of unintended mRNA targets. Following strand separation by protein components of RISC, usually the strand with the less stably paired 5' complement serves as the guide (Schwarz et al., 2003). We considered whether incorrect identification of the * strand in the *Dcx* shRNA vector but not in the mishRNA vector might lead to off-target effect. Although *RISC binder* software (Ahmed et al., 2009) predicted the correct identity of the intended guide and * strand within the *Dcx* shRNA hairpin (+0.472 compared with -0.866), to test directly we inverted the position of the guide and * strand within the shmiRNA hairpin. The majority of electroporated cells still migrated normally compared with *Dcx* shmiRNA construct (Figure S3A-B). We also swapped the shRNA and shmiRNA vector promoters (shRNA uses a U6 promoter while the shmiRNA uses a CMV promoter) and again found that only the shRNA produced the off-target effect (Figure S3C-D). We conclude that the shmiRNA vectors do not produce an off-target effect, despite producing the same antisense nucleotide targeting *Dcx* or *Dcl1*.

We wanted to test whether shmiRNA tools are effective to knock down gene function in migration, and while neither *Dcx* nor *Dcl1* KO demonstrated a migration defect, the *Dcx/Dcl1* double KO showed a robust defect in migration (Deuel et al., 2006; Koizumi et al., 2006). We thus generated a construct 'chaining' the two shmiRNA hairpins into the same vector to achieve a *Dcx;Dcl1* double shmiRNA, resulting in a dramatic migration defect, with 25.6% GFP+ cells in uCP (Figure 3I-J). The same effect was noted with electroporation of both the *Dcx* and *Dcl1* shmiRNA vectors, but not with single shmiRNA against *Dcx* or *Dcl1* together with the scrambled shmiRNA (not shown). We conclude that shmiRNAs can efficiently inactivate *Dcx* and *Dcl1* without causing off-target migration effects.

We also tested whether a siRNA duplex (i.e. a double stranded RNA rather than a vector-encoded shRNA) induced a migration defect. We first verified that siRNA to *Dcx* resulted in reduced protein levels by immunofluorescence (Figure S3E-F), then electroporated together with GFP-encoding plasmid into embryos compared with scrambled shRNA or *Dcx* shRNA as negative- and positive-controls. We found that GFP+ cells migrated well into the cortex, with 45.8% in the uCP compared with 55.6%

for scrambled shRNA and 27.9% for *Dcx* shRNA (Figure S3G-H). We conclude that the off-target effect of shRNAs can be overcome with the use of alternative RNAi methods.

Endogenous miRNAs are dysregulated by *Dcx* shRNA knockdown

Endogenous miRNAs and processing factors are required in neuronal migration (Pedersen et al., 2013), and conditional *Dicer* KO mice recombined with Nestin-Cre show fewer BrdU⁺ cells in uCP (Kawase-Koga et al., 2009). In *Dicer*^{fllox/fllox} mice (Harfe et al., 2005) we electroporated GFP-Cre plasmid at E14.5 and observed a striking migration defects, whereas neither GFP-Cre electroporated into WT nor GFP into *Dicer*^{fllox/fllox} mice had any effect (Figure 4A-E). We conclude that miRNA processing, dependent upon *Dicer*, is required for neuronal migration, consistent with a role for endogenous miRNAs in neuronal migration.

Given these results, the off-target effects of shRNA may be due to disruptions of endogenous miRNA processing. We thus performed a comprehensive deep sequencing of mature miRNA sequencing of WT neurons electroporated with *Dcx* 3'UTR at E14.5 compared with scrambled shRNA. We selected E16.5 for FACS sorting because migration is still ongoing and because neurons in both conditions are located in the IZ, thus minimizing location biases into the results (Figure 4F). We detected 124 miRNAs that appeared in >50 reads each, 16 miRNAs accounted for more than 80%, and 58 miRNAs accounted for more than 96% of total miRNA read counts. The miRNA-9 and let-7c were the most highly represented, accounting for 25% and 21% of total counts, respectively (Hohjoh and Fukushima, 2007).

We focused on the 58 miRNAs representing more than 96% of the total miRNAs in control neurons. Noticeably, we observed a diminution of several members of the let-7 family of miRNAs. Mature let-7c, let-7b and miR-98 representations were diminished approximately -12-38% compared with baseline (Figure 4G). On the contrary, several mature miRNAs such as mature miR-15b, miR-17, miR-181a, miR-181a*, miR-33 and miR-9 were increased by +25-67%. The fact that we observed both increase and decrease suggest that this dysregulation is not simply due to saturation of a limiting maturation step, but more likely disrupting the balance of specific miRNA expressions.

We mimicked these dysregulations, individually or collectively, overexpressing the upregulated miRNA or inhibiting the maturation of the downregulated miRNAs. We observed that none of the individually electroporated miRNAs disturbed migration appreciably, and neither did combinations of miR-15b/miR-17/miR-33 or miR-9/miR-181a/miR-33 or miR9/miR-17/miR-181a (not shown), suggesting that individual or combinations of most miRNAs is not sufficient to impact neuronal migration. Next, inhibition of let-7 family maturation was performed by overexpression of *Lin28*, a well-characterized suppressor of let-7 miRNA biogenesis (Viswanathan et al., 2008). Human Lin-28A (97% similar to mouse Lin-28) fused to GFP (Balzer and Moss, 2007) resulted in defective migration (Fig. 4H-I), although not as strongly as with the *Dcx* shRNA. We next combined the let-7 family maturation inhibition with the overexpression of some upregulated miRNAs, and observed that this combination compounded the phenotype, specifically for the combination with miR-15b and miR-33, and so further did the co-expression of miR-9* and miR-181a. We conclude that mimicking several features of the miRNA sequencing closely recapitulates the severity of the *Dcx* off-target phenotype.

DISCUSSION

Here we show that at least some of the effects of shRNAs in neuronal migration are mediated by off-target effects, to account for the discrepancy between KO and KD phenotypes. This result was not entirely surprising, given that a complete loss-of-function induced by KO should display at least as severe phenotype as a partial loss-of-function induced by KD. What was surprising was that the effect was observed so dramatically and with so many different scrambled shRNA constructs tested. These results offer a warning in the interpretation of shRNA results in neuronal migration, and link to other areas of neurobiology (Alvarez et al., 2006).

Nevertheless, simply switching from shRNA to shmiRNA constructs by-passed the toxic effect. In fact, the data supports the model whereby the off-target effect was not so much due to mispairing of shRNA with improper mRNA targets, but most likely due to disruptions in processing of endogenous miRNAs caused by overexpression of unnatural shRNAs. The fact that the same sequences did not induce off-target effects when expressed within the shmiRNA constructs, and that the *Dicer* conditional mouse showed specific neuronal migration defects, support this conclusion. Further, the finding that the combination of *Dcx* and *Dcl1* KD using these shmiRNA constructs faithfully recapitulates the findings from the KO experiments supports the effectiveness of this approach.

Although *Dcx* neurons display defective migration in several contexts, the final placement of these cells within the laminated cortex is indistinguishable from WT cortex, suggesting some form of compensation (Kappeler et al., 2006; Pramparo et al., 2010). Studies from double KOs suggest that the *Lis1* and *Dcl1* genes are partially redundant with *Dcx* as the double KOs show phenotypes not observed in single KOs. This may also be one reason why *Dcx* shRNA electroporation in the *Dcx* KO showed the most severe migration defect of any of the conditions tested, but an alternative hypothesis is that the absence of a target for the shRNA yielded higher off-target effects. Thus our results do not demonstrate that *Dcx* has no role in murine cortical migration, but prompt a reevaluation of genetic interactions in the *in vivo* setting.

We utilized *Lin28* overexpression to model the effect of downregulation of let-7 family induced by *Dcx* shRNA. We found that *Lin28* overexpression, which inhibits the biogenesis of let-7, impaired neuronal migration. Individual members of the let-7 miR family can regulate neuronal differentiation and migration by targeting signaling of the homologue of the *Drosophila* tailless gene *TLX* (Cimadamore et al., 2013; Zhao et al., 2013). While morphology of *Lin28* cells was unremarkable in the cortex, they showed defects in migration. *Lin-28* is also involved in many other cellular processes, and further experiments will be required to test whether the defect caused by *Lin-28* overexpression is mediated through let-7 and *TLX* signaling.

EXPERIMENTAL PROCEDURES

Histology and immunohistochemistry

Embryos were genotyped and dissected and fixed in 4% PFA in PBS for 20 μ m coronal sectioning and immunohistochemistry (Kerjan et al., 2009). Primary antibodies were rabbit anti-Cre (1:1000, Novagen), anti p-PKR (1:200, Biosource), rabbit anti GFP (1:500 Molecular probes). Images were acquired with an Olympus FV1000 confocal microscope. Quantification of percentage of signal in cortical subdomains was performed by drawing a line at the junction between the CP and IZ/SVZ, using Volocity software.

shRNAs, shmiRNAs, and plasmids

Dcx 3'UTR, *Dcx* CDS, *Dcl1* CDS and multiple scrambled shRNAs cloned into pGE2hrGFP II (Stratagene) ensured co-expression of GFP with shRNAs. Scrambled sequences were generated by siRNA Wizard v.3.1 software (InvivoGen). Identical sequences were cloned into the shmiRNA pcDNA6.2 GW/emGFP (Invitrogen). The miR 15b, 17, 9*, 181a, 3 and flanking regions (~150 bp up- and down-stream) were cloned into pmR-ZsGreen1 (Clontech). Lin28-GFP was in the pLT.143 vector utilizing phrGFP II (Stratagene). Cre recombinase was encoded by pBS500 EF1alpha-GFPCre (Addgene #11920), and Cre-reporter plasmid was in pCALNL-DsRed2 (Addgene #13769). All electroporations were with Endofree® preparations. *Dcx* siRNA duplexes (Qiagen HPP purified) were electroporated at 2 μ M together with phrGFP II (Stratagene) at 4:1 molar ratio.

Animal breeding and Electroporations

Dcx, *Dcl1*, *Dicer*^{tm1Bdh/J} lines were bred as reported in a mixed C57/BL6;129Svj background (Harfe et al., 2005; Koizumi et al., 2006) (Jackson Labs 013170, 006366). C57Bl6 (Charles River) were used when mating did not allow WT littermate controls. All work was in accordance with UCSD IACUC protocols. Surgery and electroporation was performed as described (Koizumi et al., 2006), injecting 1-2 μ l with 0.1% Fast Green (Sigma) by pressure (General Valve Picospritzer) through the uterus into the lateral ventricles of anesthetized dams, then BTX Squarewave ECM 830 produced 5-pulses of 30mV.

Cortical neuron preparations

Dissociation was as described (Kerjan et al., 2009), transfected after 24h with Lipofectamine 2000, fixed at 2 days with 4% PFA for 30 min then immunostained with anti-*Dcx* (1:100, Santa Cruz Biotechnology) or anti-*Dcl1* (1:500, gift of Dr. A. Edelman). FACS sorting was performed on a BD FACSAria™ II instrument with empiric parameters.

RNA-Seq and Processing

mRNA and miRNA were extracted using mRNAeasy (Qiagen) without smRNA fraction enrichment, to collect all RNAs, checked by Agilent 2100 Bioanalyzer (RNA Nano Chip, Agilent), prepared by Illumina sequencing via size selection on Novex 15% TBE-Urea gel (Invitrogen), lengths 20-30 bases isolated, ligated with 5' adapter, size-selected, then ligated with 3' adapter, size selected and subject to reverse transcription and 15 PCR cycle amplification, size selected to 90-100 bp, and used for cluster generation and 40 bp single end sequencing, called with Casava v1.5, demultiplexing the 5bp barcodes at the 5-prime of the read with 1 mismatch allowed. mirDeep2 was used to annotate miRNA reads (Friedlander et al., 2012), and EdgeR used for statistical analysis (Robinson and Smyth, 2007).

URLs

RISC binder: <http://crdd.osdd.net:8081/RISCbinder/>

GLAM2: <http://meme.nbcr.net/meme/cgi-bin/glam2scan.cgi>

SUPPLEMENTAL INFORMATION

Supplemental Information includes three figures and can be found with this article online.

AUTHOR CONTRIBUTIONS

G.K. generated figures, S.L.B., A.G.F, G.N., and J.E.L. generated clones, S.T.B. tested genetic perturbations on migration and edited the manuscript. J.G.G. directed the project.

ACKNOWLEDGEMENTS

We thank Hong-Tuyet Nguyen and Jesus Olivera for technical expertise, G. Yeo and A. Pasquinelli for discussions. This work was supported by the National Institutes of Health R01NS41537. G.K. was supported by an EMBO Long Term Fellowship, S.L.B. by the A.P. Giannini Fellowship, and A.G.F. by the Brain Behavior Research Foundation. We thank the UCSD Neuroscience Microscopy Core P30 NS047101 for imaging support, S.R. Head and L. Schaffer from Scripps Research Institute Genomics Core Facility, J. LoTurco for *Dcx* shRNA constructs, E. Balzer for Lin28-GFP construct, D. Young at the UCSD Flow Cytometry Core. Authors have no conflicts of interest.

REFERENCES

- Ahmed, F., Ansari, H.R., and Raghava, G.P. (2009). Prediction of guide strand of microRNAs from its sequence and secondary structure. *BMC Bioinformatics* *10*, 105.
- Alvarez, V.A., Ridenour, D.A., and Sabatini, B.L. (2006). Retraction of synapses and dendritic spines induced by off-target effects of RNA interference. *J Neurosci* *26*, 7820-7825.
- Bai, J., Ramos, R.L., Ackman, J.B., Thomas, A.M., Lee, R.V., and LoTurco, J.J. (2003). RNAi reveals doublecortin is required for radial migration in rat neocortex. *Nat Neurosci* *6*, 1277-1283.
- Balzer, E., and Moss, E.G. (2007). Localization of the developmental timing regulator Lin28 to mRNP complexes, P-bodies and stress granules. *RNA biology* *4*, 16-25.
- Bauer, M., Kinkl, N., Meixner, A., Kremmer, E., Riemenschneider, M., Forstl, H., Gasser, T., and Ueffing, M. (2009). Prevention of interferon-stimulated gene expression using microRNA-designed hairpins. *Gene therapy* *16*, 142-147.
- Chung, K.H., Hart, C.C., Al-Bassam, S., Avery, A., Taylor, J., Patel, P.D., Vojtek, A.B., and Turner, D.L. (2006). Polycistronic RNA polymerase II expression vectors for RNA interference based on BIC/miR-155. *Nucleic Acids Res* *34*, e53.
- Cimadamore, F., Amador-Arjona, A., Chen, C., Huang, C.T., and Terskikh, A.V. (2013). SOX2-LIN28/let-7 pathway regulates proliferation and neurogenesis in neural precursors. *Proc Natl Acad Sci U S A* *110*, E3017-3026.
- Corbo, J.C., Deuel, T.A., Long, J.M., LaPorte, P., Tsai, E., Wynshaw-Boris, A., and Walsh, C.A. (2002). Doublecortin is required in mice for lamination of the hippocampus but not the neocortex. *J Neurosci* *22*, 7548-7557.
- de Nijs, L., Leon, C., Nguyen, L., Loturco, J.J., Delgado-Escueta, A.V., Grisar, T., and Lakaye, B. (2009). EFHC1 interacts with microtubules to regulate cell division and cortical development. *Nat Neurosci* *12*, 1266-1274.
- Deuel, T.A., Liu, J.S., Corbo, J.C., Yoo, S.Y., Rorke-Adams, L.B., and Walsh, C.A. (2006). Genetic interactions between doublecortin and doublecortin-like kinase in neuronal migration and axon outgrowth. *Neuron* *49*, 41-53.
- Fedorov, Y., Anderson, E.M., Birmingham, A., Reynolds, A., Karpilow, J., Robinson, K., Leake, D., Marshall, W.S., and Khvorova, A. (2006). Off-target effects by siRNA can induce toxic phenotype. *RNA* *12*, 1188-1196.
- Fineberg, S.K., Kosik, K.S., and Davidson, B.L. (2009). MicroRNAs potentiate neural development. *Neuron* *64*, 303-309.
- Friedlander, M.R., Mackowiak, S.D., Li, N., Chen, W., and Rajewsky, N. (2012). miRDeep2 accurately identifies known and hundreds of novel microRNA genes in seven animal clades. *Nucleic Acids Res* *40*, 37-52.
- Gantier, M.P., and Williams, B.R. (2007). The response of mammalian cells to double-stranded RNA. *Cytokine & growth factor reviews* *18*, 363-371.
- Gitton, Y., Tibaldi, L., Dupont, E., Levi, G., and Joliot, A. (2009). Efficient CPP-mediated Cre protein delivery to developing and adult CNS tissues. *BMC Biotechnol* *9*, 40.
- Gotz, M. (2003). Doublecortin finds its place. *Nat Neurosci* *6*, 1245-1247.
- Grimm, D., Streetz, K.L., Jopling, C.L., Storm, T.A., Pandey, K., Davis, C.R., Marion, P., Salazar, F., and Kay, M.A. (2006). Fatality in mice due to oversaturation of cellular microRNA/short hairpin RNA pathways. *Nature* *441*, 537-541.

Harfe, B.D., McManus, M.T., Mansfield, J.H., Hornstein, E., and Tabin, C.J. (2005). The RNaseIII enzyme Dicer is required for morphogenesis but not patterning of the vertebrate limb. *Proc Natl Acad Sci U S A* *102*, 10898-10903.

Hohjoh, H., and Fukushima, T. (2007). Expression profile analysis of microRNA (miRNA) in mouse central nervous system using a new miRNA detection system that examines hybridization signals at every step of washing. *Gene* *391*, 39-44.

Hornung, V., Guenther-Biller, M., Bourquin, C., Ablasser, A., Schlee, M., Uematsu, S., Noronha, A., Manoharan, M., Akira, S., de Fougères, A., *et al.* (2005). Sequence-specific potent induction of IFN- α by short interfering RNA in plasmacytoid dendritic cells through TLR7. *Nat Med* *11*, 263-270.

Kabilova, T.O., Meschaninova, M.I., Venyaminova, A.G., Nikolin, V.P., Zenkova, M.A., Vlassov, V.V., and Chernolovskaya, E.L. (2012). Short double-stranded RNA with immunostimulatory activity: sequence dependence. *Nucleic acid therapeutics* *22*, 196-204.

Kappeler, C., Saillour, Y., Baudoin, J.P., Phan Dinh Tuy, F., Alvarez, C., Houbron, C., Gaspar, P., Hamard, G., Chelly, J., Metin, C., *et al.* (2006). Branching and nucleokinesis defects in migrating interneurons derived from doublecortin knockout mice. *Hum Mol Genet* *15*, 2183.

Kawase-Koga, Y., Otaegi, G., and Sun, T. (2009). Different timings of Dicer deletion affect neurogenesis and gliogenesis in the developing mouse central nervous system. *Dev Dyn* *238*, 2800-2812.

Kerjan, G., and Gleeson, J.G. (2007). Genetic mechanisms underlying abnormal neuronal migration in classical lissencephaly. *Trends Genet* *23*, 623-630.

Kerjan, G., Koizumi, H., Han, E.B., Dube, C.M., Djakovic, S.N., Patrick, G.N., Baram, T.Z., Heinemann, S.F., and Gleeson, J.G. (2009). Mice lacking doublecortin and doublecortin-like kinase 2 display altered hippocampal neuronal maturation and spontaneous seizures. *Proc Natl Acad Sci U S A* *106*, 6766-6771.

Koizumi, H., Tanaka, T., and Gleeson, J.G. (2006). Doublecortin-like kinase functions with doublecortin to mediate fiber tract decussation and neuronal migration. *Neuron* *49*, 55-66.

Manent, J.B., Wang, Y., Chang, Y., Paramasivam, M., and LoTurco, J.J. (2009). Dcx reexpression reduces subcortical band heterotopia and seizure threshold in an animal model of neuronal migration disorder. *Nat Med* *15*, 84-90.

Marchetti, G., Escuin, S., van der Flier, A., De Arcangelis, A., Hynes, R.O., and Georges-Labouesse, E. (2010). Integrin $\alpha5\beta1$ is necessary for regulation of radial migration of cortical neurons during mouse brain development. *Eur J Neurosci* *31*, 399-409.

Ohtaka-Maruyama, C., Hirai, S., Miwa, A., Heng, J.I., Shitara, H., Ishii, R., Taya, C., Kawano, H., Kasai, M., Nakajima, K., *et al.* (2013). RP58 regulates the multipolar-bipolar transition of newborn neurons in the developing cerebral cortex. *Cell reports* *3*, 458-471.

Olejniczak, M., Polak, K., Galka-Marciniak, P., and Krzyzosiak, W.J. (2011). Recent advances in understanding of the immunological off-target effects of siRNA. *Current gene therapy* *11*, 532-543.

Pedersen, M.E., Snieckute, G., Kagias, K., Nehammer, C., Mulhaupt, H.A., Couchman, J.R., and Pockock, R. (2013). An epidermal microRNA regulates neuronal migration through control of the cellular glycosylation state. *Science* *341*, 1404-1408.

Pramparo, T., Youn, Y.H., Yingling, J., Hirotsune, S., and Wynshaw-Boris, A. (2010). Novel embryonic neuronal migration and proliferation defects in *Dcx* mutant mice are exacerbated by *Lis1* reduction. *J Neurosci* *30*, 3002-3012.

Robinson, M.D., and Smyth, G.K. (2007). Moderated statistical tests for assessing differences in tag abundance. *Bioinformatics* *23*, 2881-2887.

Schwarz, D.S., Hutvagner, G., Du, T., Xu, Z., Aronin, N., and Zamore, P.D. (2003). Asymmetry in the assembly of the RNAi enzyme complex. *Cell* *115*, 199-208.

Suzuki, T., Miyamoto, H., Nakahari, T., Inoue, I., Suemoto, T., Jiang, B., Hirota, Y., Itohara, S., Saïdo, T.C., Tsumoto, T., *et al.* (2009). *Efhc1* deficiency causes spontaneous myoclonus and increased seizure susceptibility. *Hum Mol Genet* *18*, 1099-1109.

Takahashi, M., Sato, K., Nomura, T., and Osumi, N. (2002). Manipulating gene expressions by electroporation in the developing brain of mammalian embryos. *Differentiation* *70*, 155-162.

Viswanathan, S.R., Daley, G.Q., and Gregory, R.I. (2008). Selective blockade of microRNA processing by *Lin28*. *Science* *320*, 97-100.

Yates, L.A., Norbury, C.J., and Gilbert, R.J. (2013). The long and short of microRNA. *Cell* *153*, 516-519.

Young-Pearse, T.L., Bai, J., Chang, R., Zheng, J.B., LoTurco, J.J., and Selkoe, D.J. (2007). A critical function for beta-amyloid precursor protein in neuronal migration revealed by in utero RNA interference. *J Neurosci* *27*, 14459-14469.

Zhao, C., Sun, G., Ye, P., Li, S., and Shi, Y. (2013). MicroRNA *let-7d* regulates the *TLX*/microRNA-9 cascade to control neural cell fate and neurogenesis. *Scientific reports* *3*, 1329.

Figure Legends

Figure 1. Knockdown vs. knockout discrepancy in *Dcx* and *Dclk1* mice is at least partly due to off-target effects of shRNA

(A-C) DNA injected into the cerebral lateral ventricle (LV) at E14.5, electroporated into the ventricular zone (light blue), then GFP+ cell positions assessed at E18.5, dividing the cortex into upper, middle and lower cortical plate regions (uCP, mCP, loCP). In WT with empty GFP or Scrambled shRNA-GFP, most labeled cells were located in uCP. Scale bar 100 μ m. (D-F) Scrambled shRNA into *Dcx* knockout (KO) showed no defect, whereas *Dcx* 3'UTR shRNA into either WT or *Dcx* KO showed a migration defect, with most cells in mCP and loCP. (G) Scrambled shRNA in WT or *Dcx* KO showed 55.6% vs. 45.5% of cells in UCP. There was a mild though not significant difference in *Dcx* KO with scrambled shRNA (ns). $n = 4-6$ mice from 2-4 litters for each condition. $p > 0.05$, Student t-test. *Dcx* 3'UTR shRNA impaired migration in both the WT and *Dcx* KO, with 27.9% vs. 10.3% of cells in UCP (***, $p < 0.001$). (H-K) Scrambled shRNA in WT vs. *Dclk1* KO compared with *Dclk1* CD shRNA in WT vs. *Dclk1* KO showed 55.6% vs. 56.4%, and 22.9 vs. 16.2% of cells in UCP, indicating an effect of the *Dclk1* shRNA, irrespective of mouse genotype. $n = 6-10$ mice from 2-4 litters for each condition. See also Figure S1.

Figure 2. Sequence dependent but not sequence specific off-target effects of shRNAs

(A-D) *Dcx* KO electroporated with swapped loop (blue) maintaining *Dcx* 3'UTR or CDS stem sequence, showed migration defects (13.9% vs. 19.0% of cells in uCP, compared with 45.5% in Scrambled, ***, $p < 0.001$). Scale bar 100 μ m. (E-H) Severe, Moderate or None migration defects induced by a scrambled shRNAs. Nine scrambled shRNAs electroporated into WT mice, ranked from most to least severe effects, compared with GFP alone. The first four (a-d) showed the most dramatic differences (a-d, 32.1-43.1% in uCP, ***, $p < 0.001$), the next showed moderate difference (e, 51.3% in uCP, * $p < 0.01$), and last four were not significant (f-i, 51.3-1.9%, ns) compared with GFP alone. $n = 4-9$ mice from 1-4 litters for each condition. See also Figure S2.

Figure 3. shmiRNA or siRNA fail to induce off-target migration defects

(A) The pri-miRNA is cleaved in the nucleus by drosha/DGCR8 to yield pre-miRNA, which is akin to products from an shRNA vector, containing an antisense (red) and * (green) strand, exported through the nuclear pore (space between ovals) by Exportin-5, further cleaved in the cytoplasm by Dicer to yield siRNAs, akin to synthetic siRNA duplex oligos, loaded into the RISC complex and then guide strand associates with the target mRNA for silencing. (B-E) *Dcx* and *Dclk1* miRNA are effective against endogenous *Dcx* or *Dclk1* protein in transfected primary cortical neurons (green). Bar 50 μ m. (F-I) *Dcx* and *Dclk1* shmiRNAs together but neither separately induces migration defect. Bar 100 μ m. (J) Specificity and sensitivity of shmiRNAs targeting *Dcx* and *Dclk1* in WT cortex (71.0% Scrambled vs. 69.2% *Dcx* shmiRNA1 vs. 76.0% *Dcx* shmiRNA2 vs. 70.9% *Dclk1* shmiRNA vs. 25.6% *Dcx*; *Dclk1* shmiRNA KD of cells in UCP, ***, $p < 0.001$). $n = 5-9$ mice from each of 2 litters for each condition. See also Figure S3.

Figure 4. Disruption of endogenous miRNA processing blocks neuronal migration

(A-C) *Dicer*^{flax/flax} Cre-GFP electroporated neurons fail neuronal migration. (D) Co-electroporation with Cre-reporter (DsRed2 expressing). Bar 100 um. (E) Percent GFP+ cells in uCP. Defect only seen for Cre-GFP electroporation into *Dicer*^{flax/flax} mice. ***, $p < 0.001$. $n = 4-13$ mice in 2 litters for each condition. (F) Following electroporation, VZ and loCP was microdissected at E16.5, cells dissociated, FACS isolated, then miRNAs sequenced. (G) miRNAs with most severely dysregulated levels either reduced (red) or increased (green). The percent representation of each miRNA relative to total miRNAs identified (>20,000 reads). Formula to calculate the change (δ) in miRNA. (H-I) WT mice electroporated with GFP alone, Lin28-GFP (to interfere with let-7 family) and combination of miR9*, 181a and Lin28-GFP, showing progressive more severe migration defects. (K) Migration defects of combination electroporations, compared with *Dcx* shRNA. $n = 5-10$ mice from each of 1-4 litters for each condition.

Figure 1

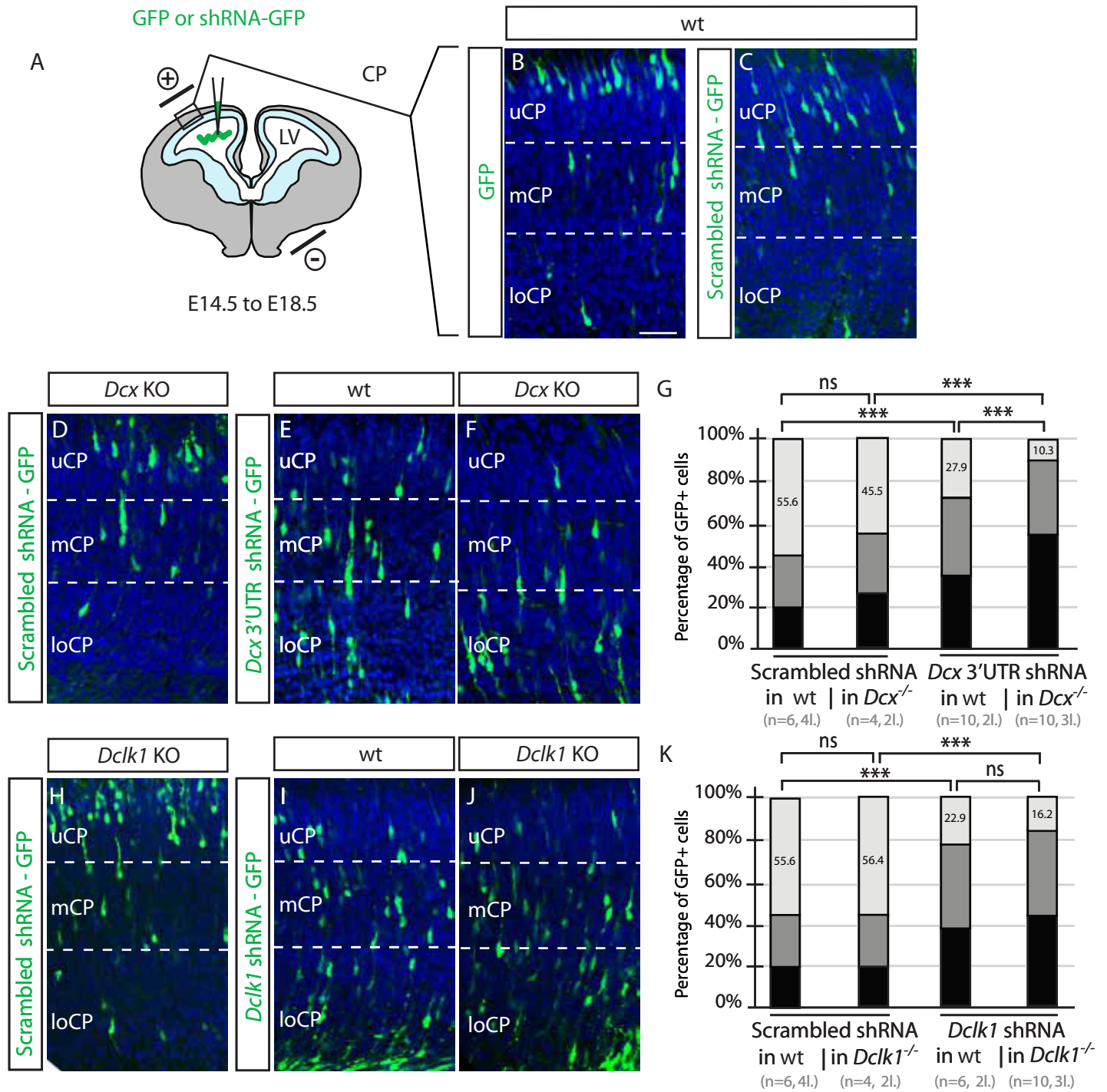


Figure 2

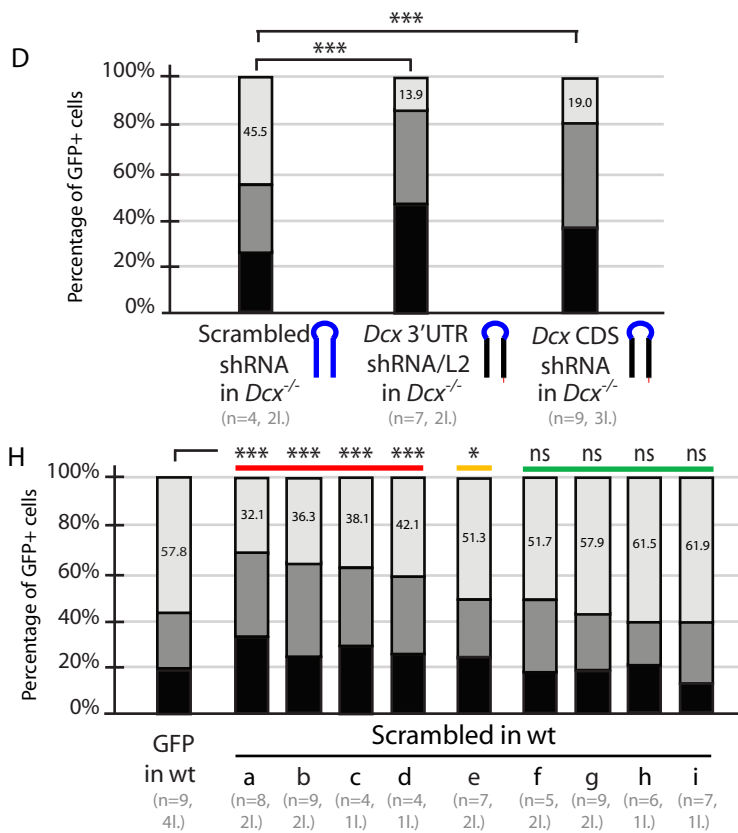
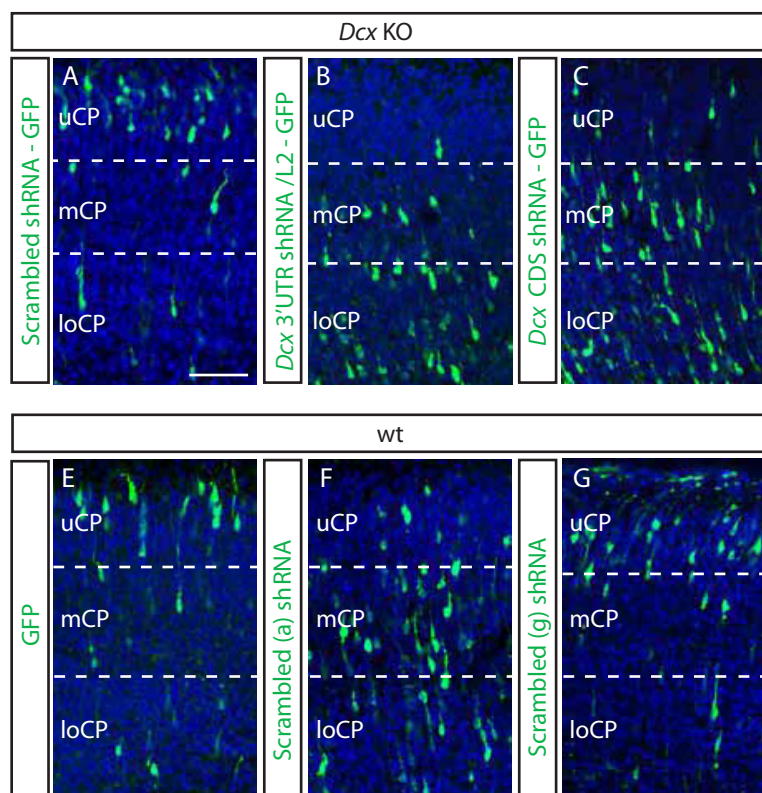


Figure 3
Figure 3

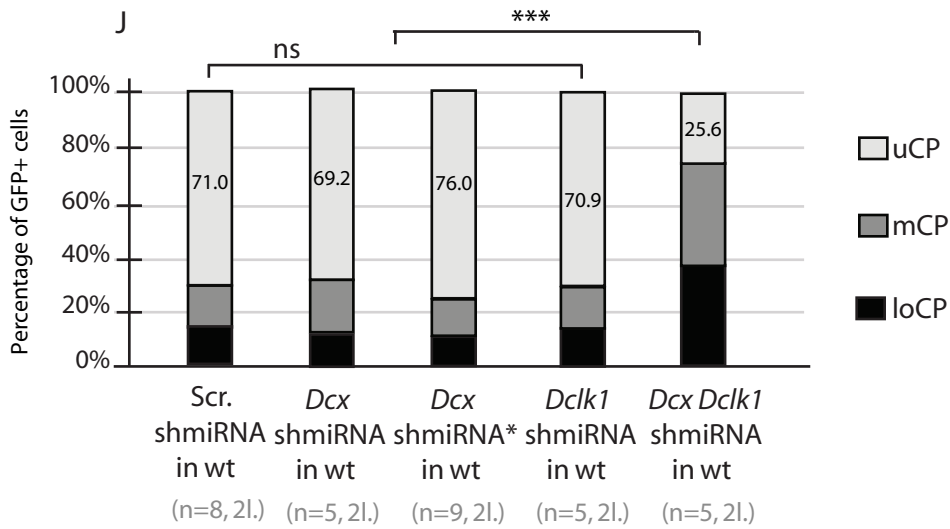
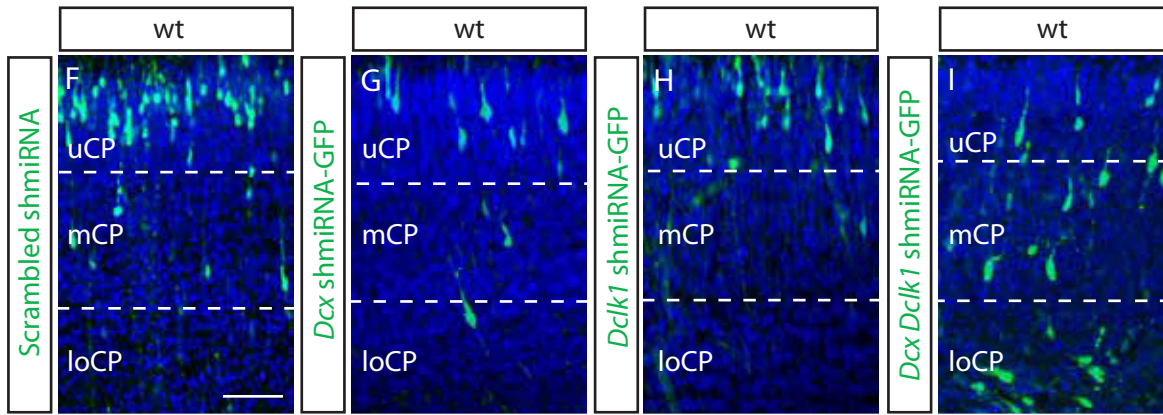
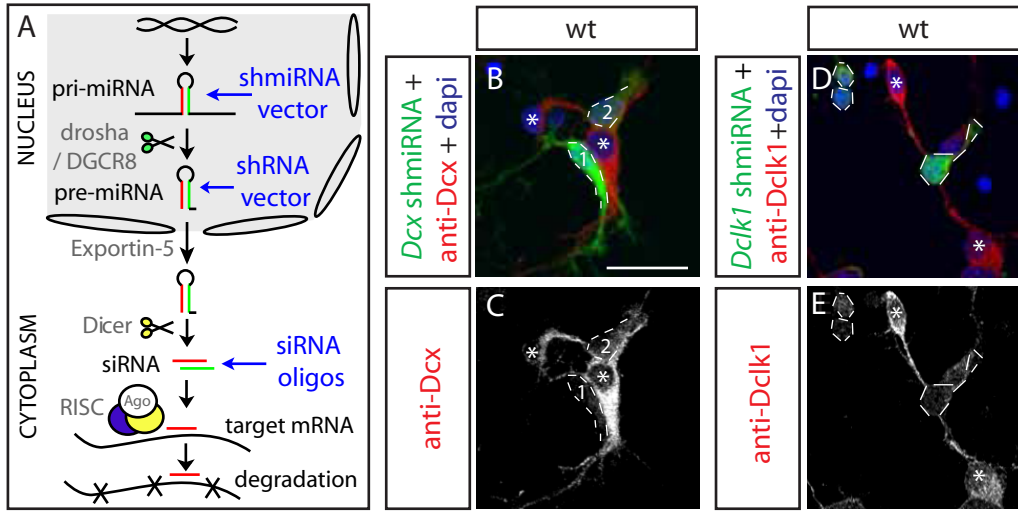
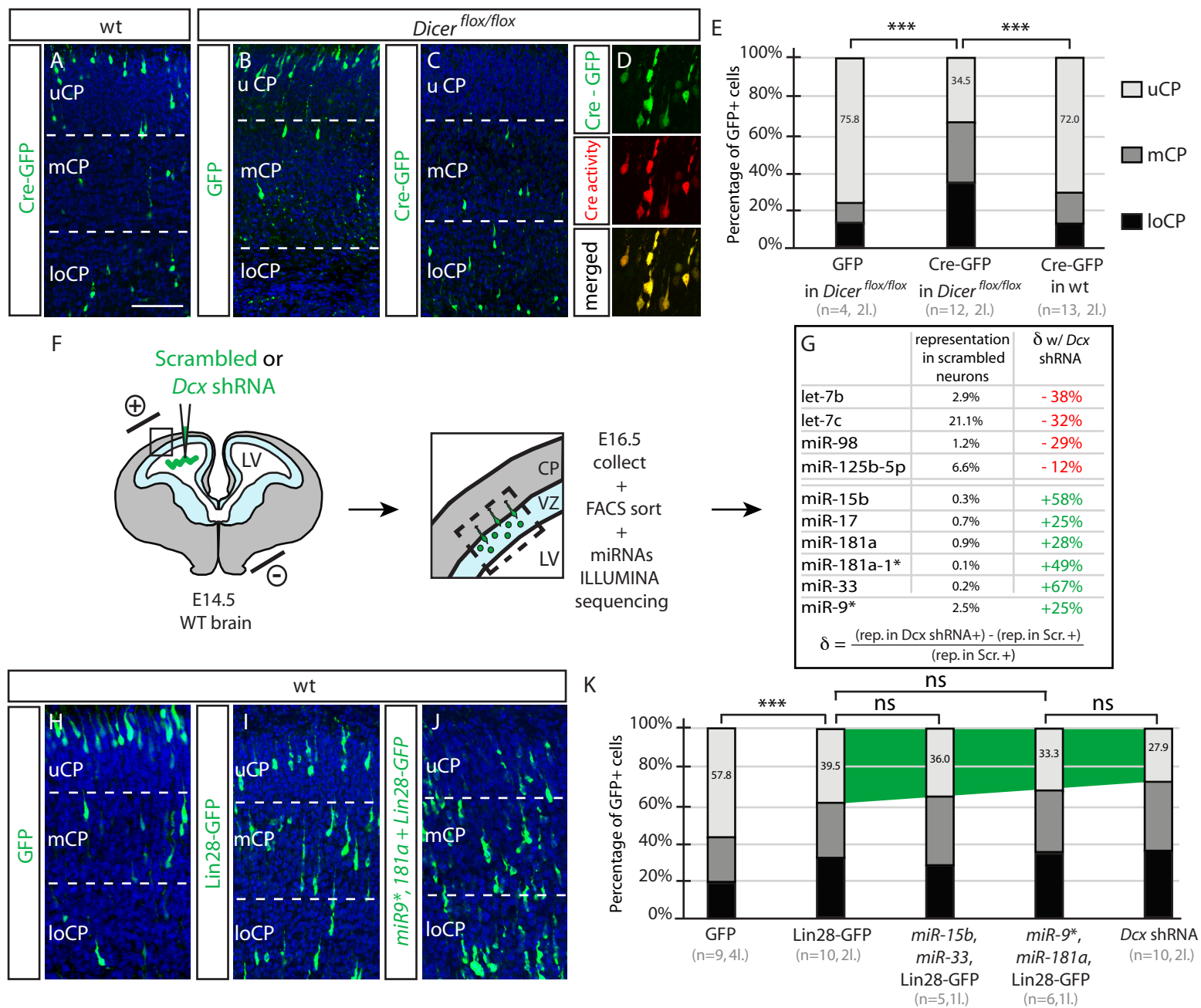


Figure 4



Supplementary Figure Legends

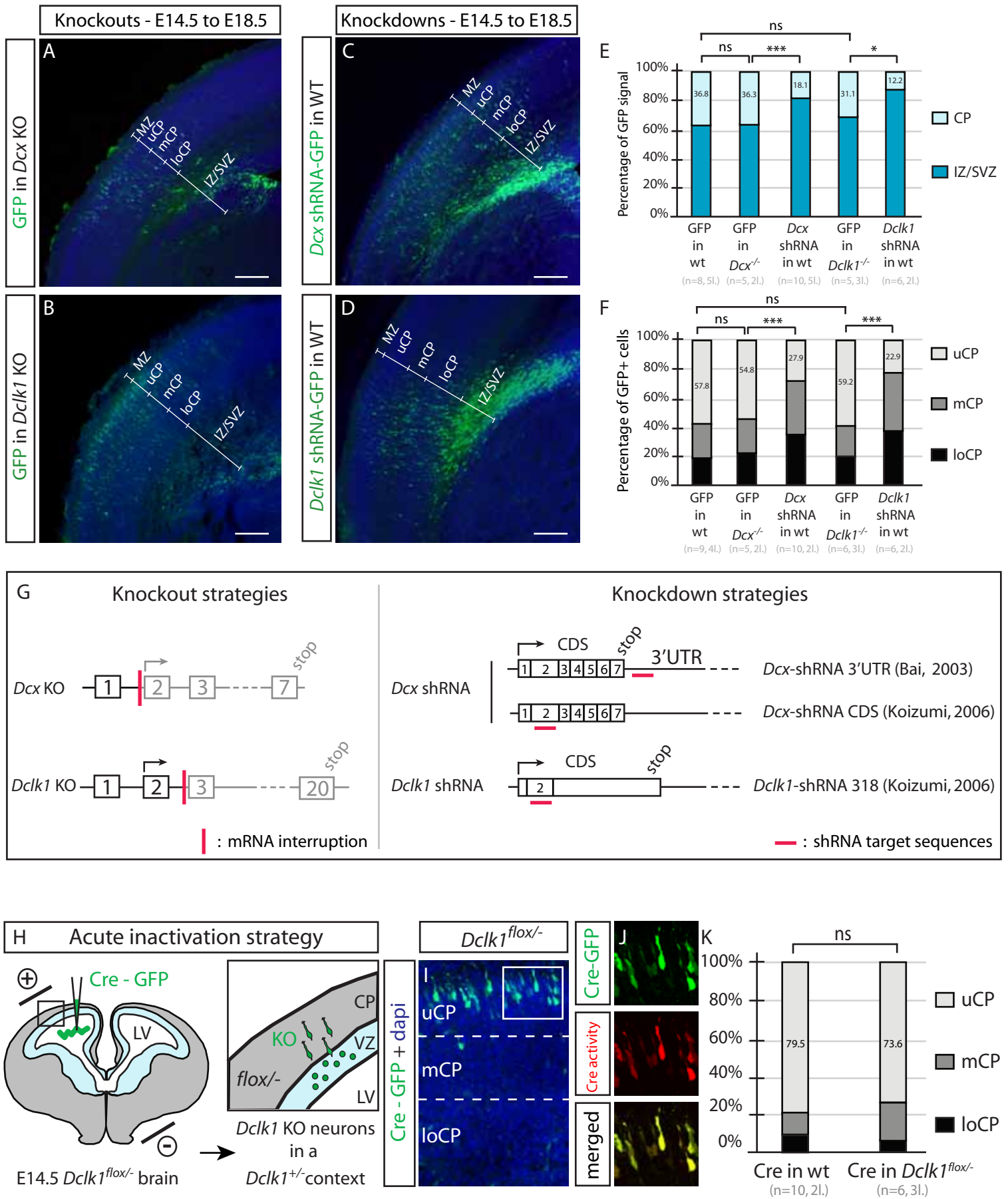
Supplemental Figure 1 (accompanies Figure 1). *Dcx* and *Dclki* knockout (KO) and knockdown (KD) produce discrepant phenotypes. Position of neurons at E18.5 following E14.5 electroporation of GFP in *Dcx* (A) or *Dclki* (B) KO, compared with *Dcx* (C) or *Dclki* (D) KD into WT embryos. Note that there is accumulation of GFP+ cells within the IZ and SVZ, as well as a failure of cells to reach the upper cortical plate (uCP) in both KDs, but not in KOs. (E) Percentage of GFP+ pixels within the CP vs. IZ/SVZ. (F) Percentage of GFP+ cells within the three CP (uCP, mCP and loCP) zones. *:p<0.05, ***:p<0.01, ns : not significant. The *n* for each experiment is given for mice and litters for each condition. (G) Schematic of KO vs. KD strategies. *Dcx* KO is deleted for exons 2-3, while *Dclki* KO is deleted for exon 3, both resulting in interruption of the open reading frame. The *Dcx* transcript splices to a LacZ cassette downstream and thus produces a stable mRNA but the *Dclki*ko has exon 3 deleted and thus produces an mRNA subject to nonsense mediated decay. *Dcx* KD strategy two different shRNAs, one to the 3'UTR and one within the coding sequence of exon 2 (CDS). *Dclki* KD strategy targets exon 2 (*Dclki*-shRNA 318), according to sequences published. Red lines indicate targeted sequences. (H-K) No evidence for migration defect following acute Cre-mediated inactivation of *Dclki*. (H) Electroporation strategy of Cre-GFP into *Dclki*^{flx/-} embryos at E14.5 with assessment at E18.5. (I) Cortex shows location of Cre-GFP+ cells. (J) GFP+ cells in cortex co-label with Cre-activity reporter (red). (K) No evidence for migration defect, with most cells present in uCP (79.5% s. 73.6% in WT vs. *Dclki*^{flx/-} mice. ns: non-significant. *n* = 6-10 mice in 2-3 litters each condition.

Supplemental Figure 2 (accompanies Figure 2). No evidence for inflammatory activation or dose-dependent phenotype following *Dcx* shRNA electroporation. (A-B) E18.5 cortex from *Dcx* KO electroporated with shRNA then immunostained for the inflammatory sensor phosphorylated protein kinase R (p-PKR, red). No evidence for immunoreactivity was detected. Inset, positive control inflammatory immune cell stained to demonstrate reactivity of antibody. (C) No evidence for dose-dependency for migration phenotype across the concentrations tested (0.5- 4 ug/ul), all showing roughly similar percent of cells with aberrant migration. (D) Sequence of scrambled hairpins used for study, aligned with which shRNA it was matched to for nucleotide composition.

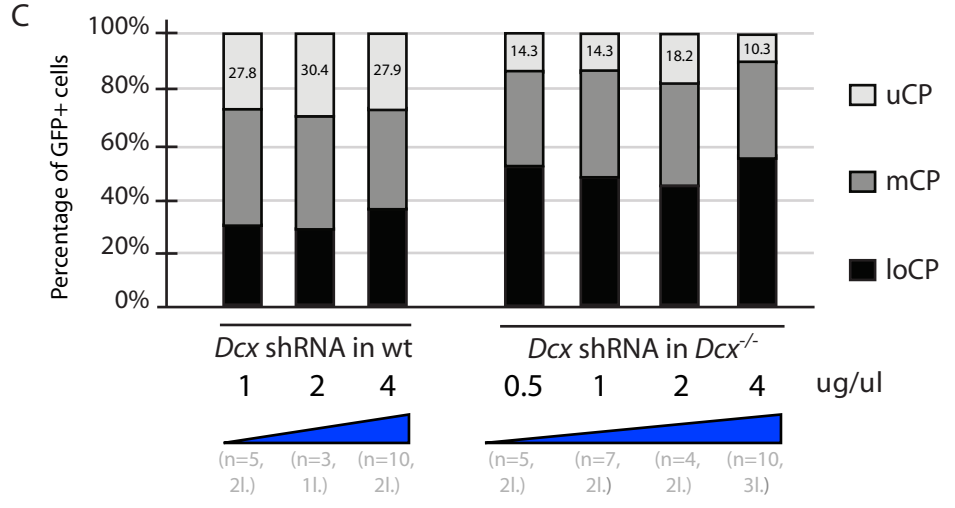
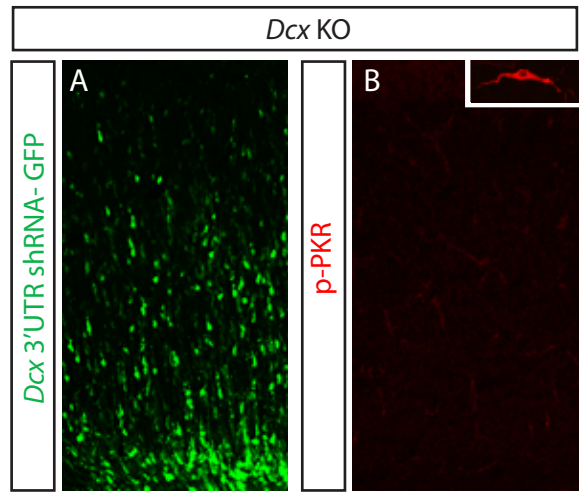
Supplemental Figure 3 (accompanies Figure 3). Lack of off-target migration defects with shmiRNA or siRNA electroporation (A-B) shmiRNA construct in which the guide and * strands are inverted with respect to one another shows no migration abnormality, compared with correct orientation of the guide and * strand, with 69.2% v. 76.0% GFP+ cells in uCP. ns: not significant. *n* = 5-9 mice in 2 litters for each condition. (C-D) Swapping the shmiRNA CMV promoter with the shRNA U6 promoter shows no migration abnormality, compared with traditional shmiRNA vector expressing *Dcx* target, with 69.2% vs. 68.5% GFP+ cells in uCP. ns: not significant. *n* = 5-7 mice in 2 litters from each (same controls were used in (A-B and C-D). (E-H) No effect of siRNA targeting *Dcx* in WT mice. (E-F) siRNA electroporated cells (green) show reduced immunostaining intensity for *Dcx* (red), consistent with knockdown effect. Dashes encircle cell bodies co-transfected with *Dcx* siRNA and GFP, and demonstrate less *Dcx* signal than neighboring cells highlighted by asterisk. (H) *Dcx* siRNA displays no

significant difference from scrambled control (ns), whereas *Dcx* shRNA shows significant difference (*, 27.9% compared with 45.8% in uCP following shRNA vs. siRNA respectively). $n = 6-10$ mice from each of 2-4 litters for each condition.

Supplemental Figure 1

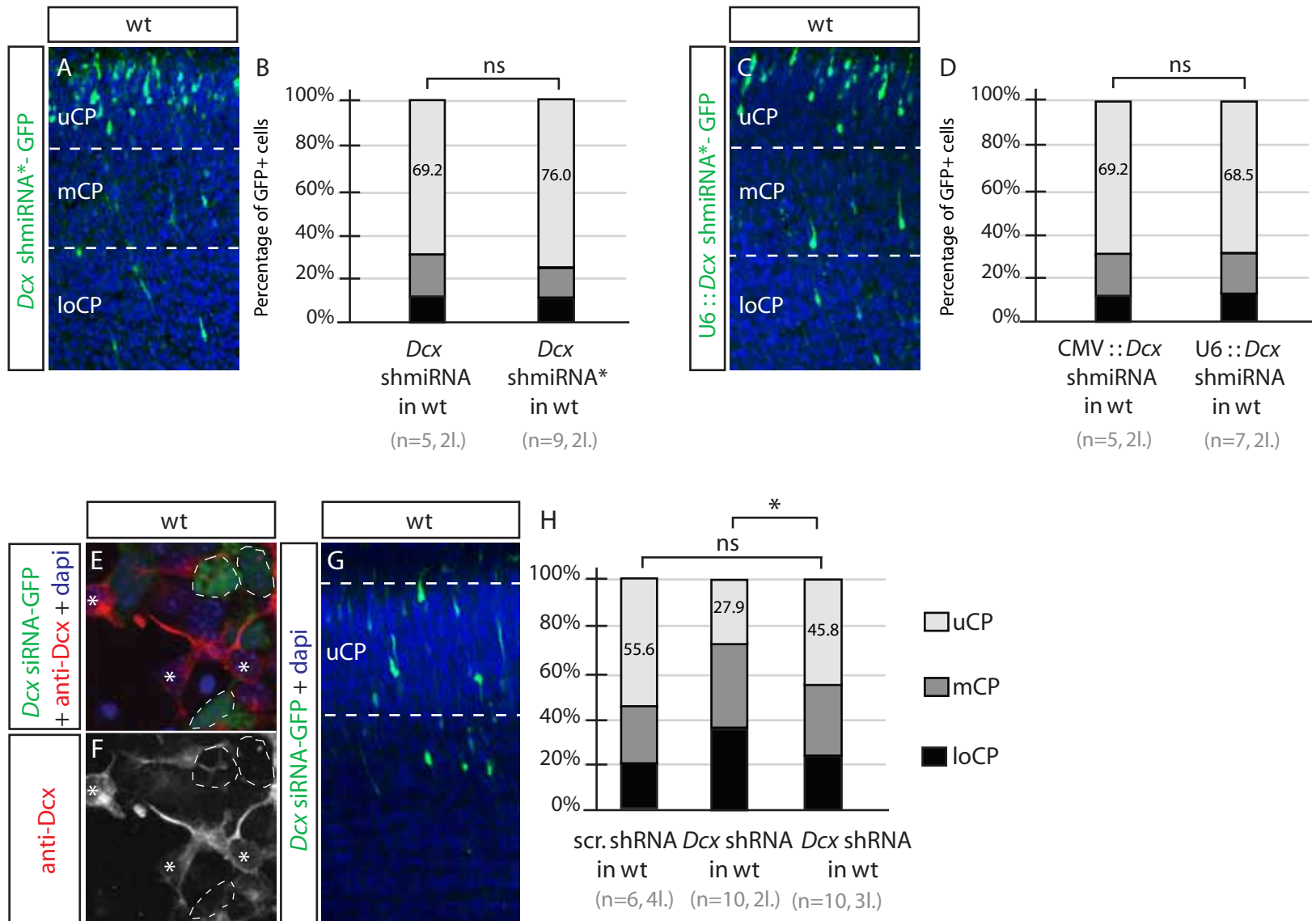


Supplemental Figure 2



	Nucleotides Composition similar to	Hairpin Sequence	Phenotype
Scrambled a	<i>Dcx</i> 3'utr shRNA	GGCCATCAATCCGAAGTGAACAT AGACACA ATGTTCACTTCGGATTGATGGCC	+++
Scrambled b	<i>Dcx</i> 3'utr shRNA/L2	GCACGACATTTCGCAACGTAAGAT GAAGCTTG ATCTTACGTTGCGAATGTCGTGC	+++
Scrambled c	<i>Dcx</i> 3'utr shRNA	GCGCGAGAAATCCGCTCATATAA AGACACA TTATATGAGCGGATTTCTCGCGC	+++
Scrambled d	<i>Dcx</i> 3'utr shRNA/L2	GCCGCAGATAGTACCAAGTTACA GAAGCTTG TGTAACCTTGGTACTACTCTGCGGC	+
Scrambled e	<i>Dcx</i> 3'utr shRNA	GCAACCAAATCGGCATGTACAGT AGACACA ACTGTACATGCCGATTTGGTTGC	+
Scrambled f	<i>Dclk1</i> shRNA	GTCATGAGTAGTACCATAT AGTGACCTTCCTGTCAGTCCACC ATATGGTACTACTCATGAC	-
Scrambled g	scr. shmiRNA (Invitrogen)	GTCTCCACGCGCAGTACATTT AGACACA AAATGTACTGCGGTGGAGAC	-
Scrambled h	<i>Dclk1</i> shRNA	GCAATAATCGATGTTAGCT AGTGACCTTCCTGTCAGTCCACC AGCTAACATCGATTATTGC	-
Scrambled i	<i>Dcx</i> 3'utr shRNA	GCACGACATTTCGCAACGTAAGAT AGACACA ATCTTACGTTGCGAATGTCGTGC	-

Supplemental Figure 3



NEURON-D-14-00141R2

ETOC Paragraph

Baek et al. resolve the discrepancy between *doublecortin* knockout and knockdown murine cortical phenotypes, attributed to dysregulation of endogenous microRNAs.

Neuron Conflict of Interest Form

Cell Press, 600 Technology Square, 5th floor, Cambridge, MA 02139, USA

Please complete this form electronically and upload the file with your final submission.

Neuron requires all authors to disclose any financial interest that might be construed to influence the results or interpretation of their manuscript.

As a guideline, any affiliation associated with a payment or financial benefit exceeding \$10,000 p.a. or 5% ownership of a company or research funding by a company with related interests would constitute a financial interest that must be declared. This policy applies to all submitted research manuscripts and review material.

Examples of statement language include: AUTHOR is an employee and shareholder of COMPANY; AUTHOR is a founder of COMPANY and a member of its scientific advisory board. This work was supported in part by a grant from COMPANY.

Please disclose any such interest below on behalf of all authors of this manuscript.

Please check one of the following:

- None of the authors of this manuscript have a financial interest related to this work.
 Please print the following disclosure statement in the Acknowledgments section:

Please provide the following information:

Please check this box to indicate that you have asked every author of this work to declare any conflicts of interest. Your answers on this form are on behalf of every author of this work.

Manuscript # (research articles only): NEURON-D-14-00141R1

Title:

Off-Target Effect of doublecortin-family shRNA on Neuronal Migration is Associated with Endogenous MicroRNA Dysregulation

Author list: Seung Tae Baek, Geraldine Kerjan, Stephanie L. Bielas, Ji Eun Lee, Ali G. Fenstermaker, Gaia Novarino, Joseph G. Gleeson

Your name: Joseph G. Gleeson

Date: 4/14/14

Neuron Formatting Checklist

To ensure timely publication, please check that all of the following are true:

FIGURE PERMISSIONS:

- for figures that have been adapted or taken directly from a published work, any necessary permissions have been obtained from the rightsholder and a copy of the documentation has been provided

REFERENCE CITATIONS:

- have a publication year that matches the corresponding references
- appear as **Smith, 1999** (one author); **Smith and Jones, 1999** (two authors); or **Smith et al., 1999** (more than two authors)
- for disambiguated references (e.g., **Smith, 1999a** and **Smith, 1999b**), also include the 'a' and 'b' designations

REFERENCES:

- have a publication year that matches the corresponding citations
- include a COMPLETE author list
- include no references to “submitted” (i.e., not formally accepted) papers
- in-press references: include online pub. date and DOI – if unavailable, must be cited as personal communication or unpublished data
- journals: include the [abbreviated journal name](#), volume, and page range
- books: include the date, title, publisher, publisher location, and (where applicable) chapter title and editors

ALL MANUSCRIPTS MUST CONTAIN:

- complete affiliations – including postal code – for each author
- email address for the corresponding author
- at least one citation for each figure and each table
- tables (if applicable) that are formatted as Microsoft Word tables – not as images or lists – with contents separated into individual table cells