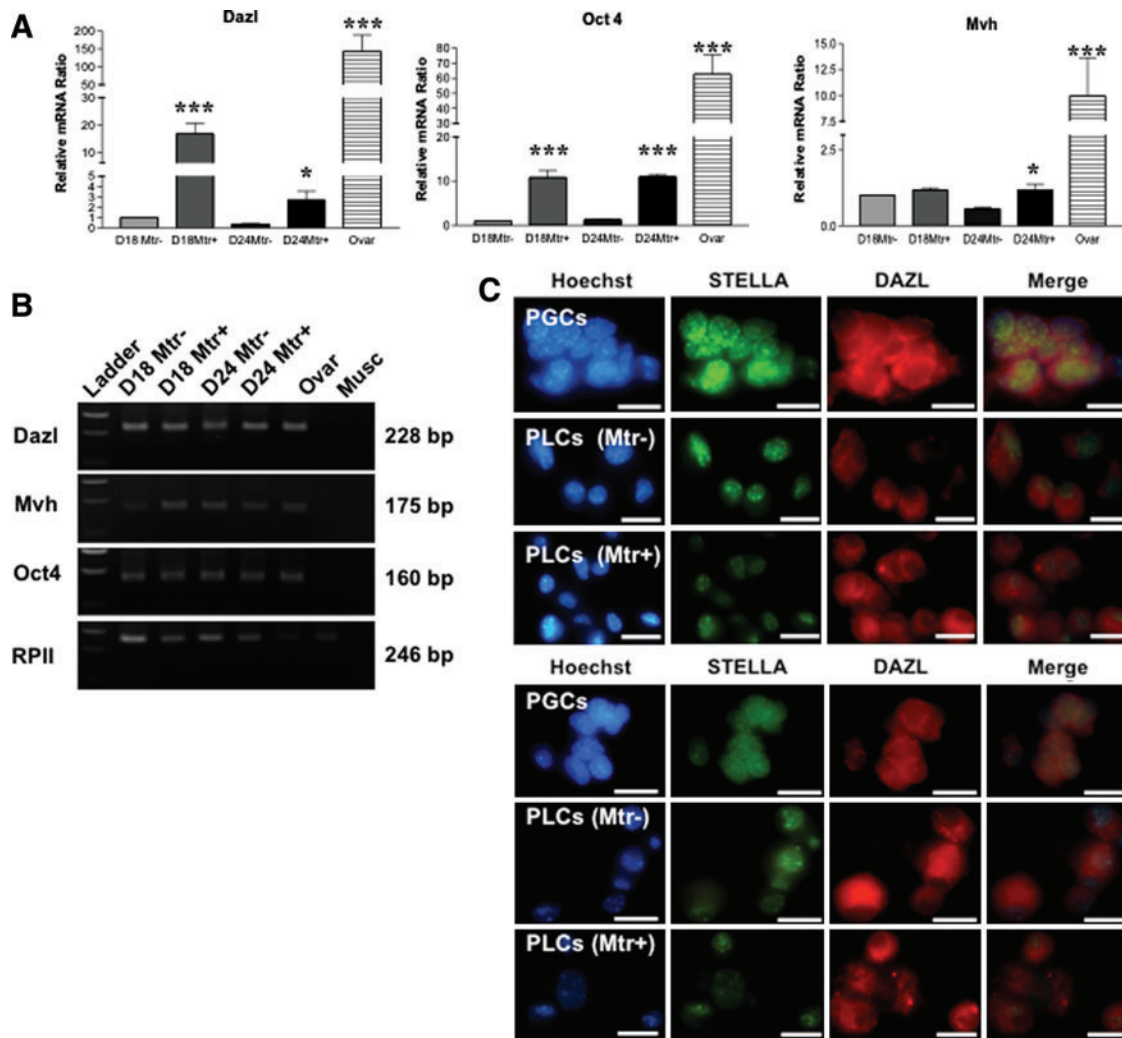


Supplementary Data



SUPPLEMENTARY FIG. S1. Matrigel enhances the expression of germ cell markers during SSC differentiation to ovarian-cell-like cells. SSCs were differentiated into PLCs and OLCs until D12 before being cultured with or without Matrigel (Mtr) to D18 or D24. **(A)** Relative mRNA levels of germ cell marker genes, compared to adult mouse ovary (Ovar). Culture with Matrigel showed increased gene expression compared with control cultures. Data represent the mean \pm SEM of three independent experiments. *Significantly different from respective controls ($P < 0.05$); ***($P < 0.001$). **(B)** Representative images of RT-PCR products to show product sizes from **(A)**; RPII was used as reference gene and mouse muscle (Musc) was used as a negative control. **(C)** Immunocytochemical (ICC) analysis of ovarian-cell-like cells for germ cell marker expression. Double ICC for STELLA+DAZL (*upper panel*) and STELLA+MVH (*lower panel*), showing positive expression of STELLA in the nucleus, and DAZL and MVH in the cytoplasm of PLCs, a cellular localization pattern similar to 12.5 dpc mouse primordial germ cells (PGCs; *top row of both panels*).