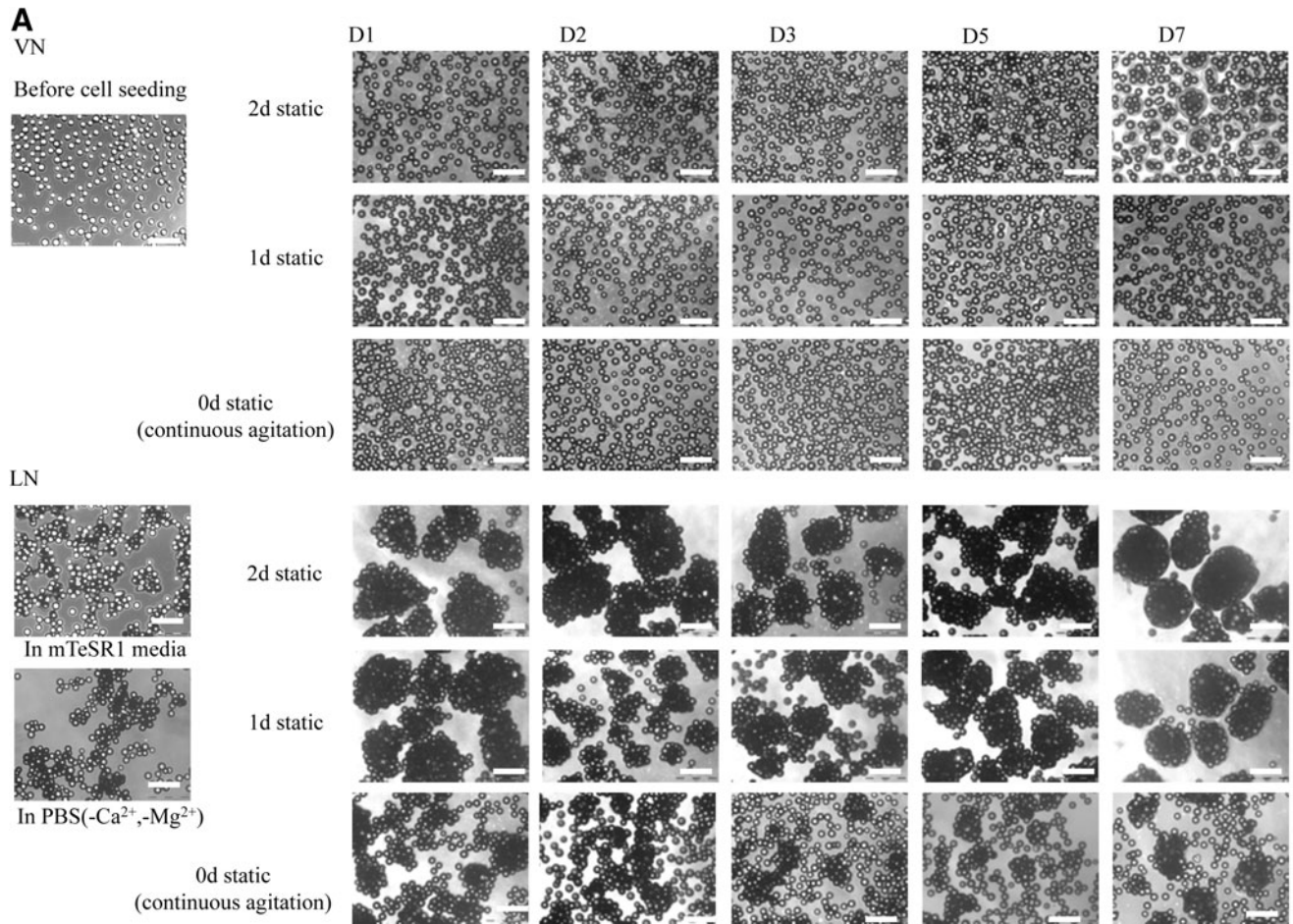


## Supplementary Data

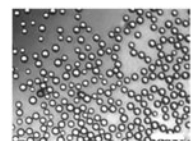


**SUPPLEMENTARY FIG. S1.** Representative images of hESC/MC aggregates over 7 days' culture in plates. HES-3 were expanded on PS MC coated with (A) VN and LN, (B) PLL+VN and PLL+LN, under each of the three agitation regimes. Scale bars are 500  $\mu$ m. LN, laminin; PLL, poly-L-lysine; VN, vitronectin.

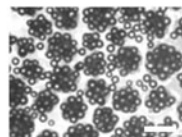
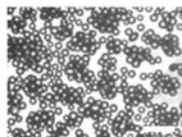
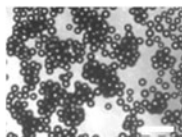
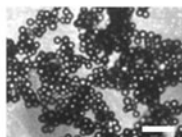
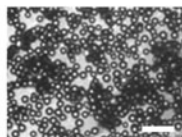
**B**

PLL+VN

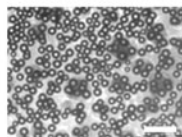
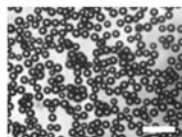
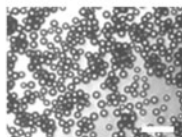
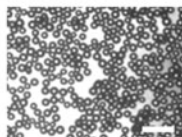
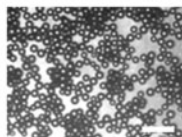
Before cell seeding



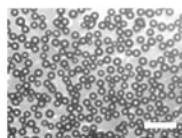
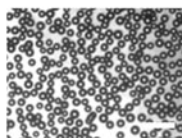
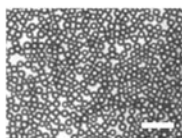
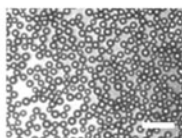
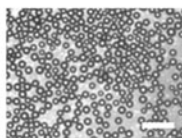
2d static



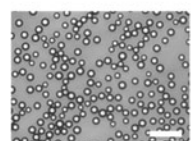
1d static



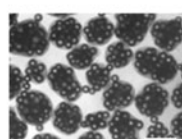
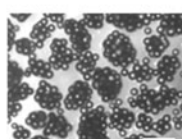
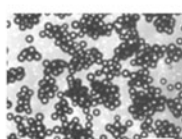
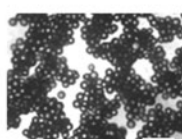
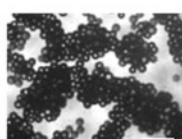
0d static  
(continuous agitation)



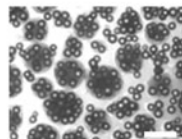
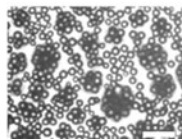
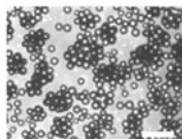
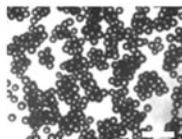
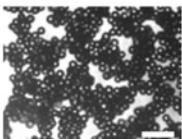
PLL+LN



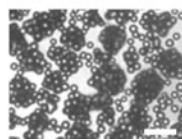
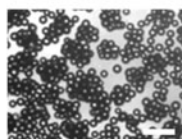
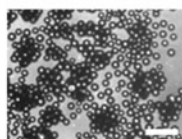
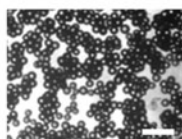
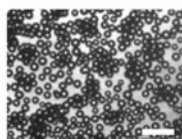
2d static



1d static



0d static  
(continuous agitation)



**SUPPLEMENTARY FIG. S1.** (Continued).