



Supplemental Material to:

**Samjhana Thapaliya, Ashok Runkana, Megan R McMullen,
Laura E Nagy, Christine McDonald,
Sathyamangla V Naga Prasad, and Srinivasan Dasarathy**

**Alcohol-induced autophagy contributes to loss in skeletal
muscle mass**

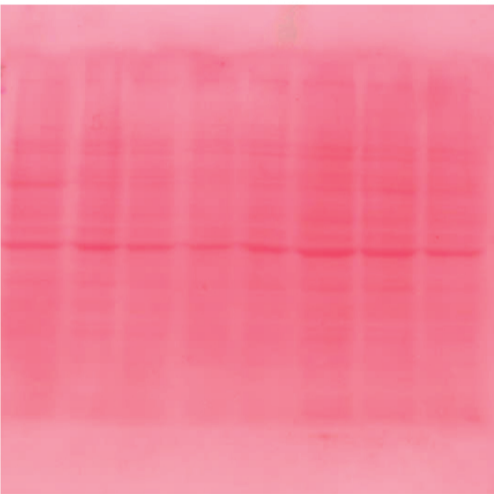
Autophagy 2014; 10(4)

<http://dx.doi.org/10.4161/auto.27918>

www.landesbioscience.com/journals/autophagy/article/27918

Control

100 mM ETOH



Ponceau
stain



ACTB

- 1 **Figure S1.** Ponceau stain of membrane after electrotransfer, showing equal loading of protein.
- 2 Immunoblot of ACTB showed no alteration in expression with ethanol treatment.