



Supplemental Material to:

**J Jesús Hinojosa-Moya, Beatriz Xoconostle-Cázares,
Roberto Toscano-Morales, Francisco Arturo Ramirez-
Ortega, José Luis Cabrera-Ponce, and
Roberto Ruiz-Medrano***

**Characterization of the pumpkin Translationally-
Controlled Tumor Protein CmTCTP**

Plant Signaling & Behavior 2013; 8(12)

<http://dx.doi.org/10.4161/psb.26477>

www.landesbioscience.com/journals/psb/article/26477

Figure S1
Hinojosa-Moya et al., 2013

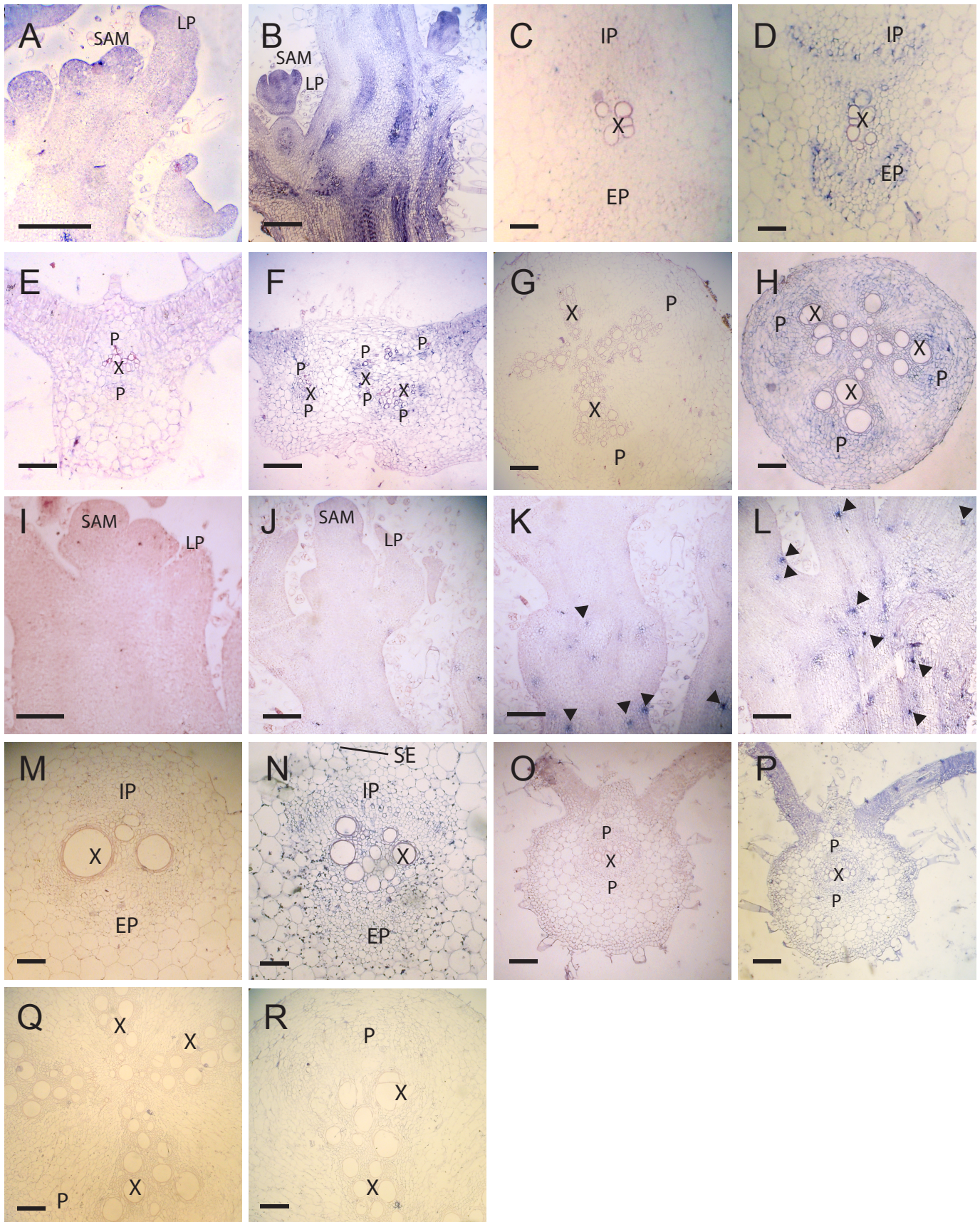


Figure S1. CmTCTP mRNA localizes to developing and mature phloem in CMV-infected plants; CmTCTP protein is detected at low levels in various cell types. A to H, in situ localization of CmTCTP mRNA in various tissues. A, C, E, and G, sense probe; B, D, F, and H, antisense probe. A and B, shoot apex longitudinal section; C and D, petiole cross section; E and F, leaf blade transversal section; G and H, main root cross section. I to P, immunolocalization using CmTCTP-specific polyclonal antibodies. I, M, O, and Q preimmune serum; J, K, L, N, P, and R, immune serum. I and J, apex transversal section (compare to apex in in situ hybridization); K and L, subapical region; M and N, petiole cross section; O and P, leaf blade transversal section; Q and R, main root transversal section. All bars, 500 μ M. SAM, shoot apical meristem; LP, leaf primordia; IP, internal phloem; EP, external phloem; X, xylem; P phloem region; SE, sieve elements. Arrowheads indicate individual or small groups of cells with signal.