

Supplemental Material to:

**Aseneth Herrera-Martinez, Roberto Ruiz-Medrano,
Santiago Galván-Gordillo, Roberto Toscano Morales,
Lidia Gómez-Silva, Maria Valdes, Jesús Hinojosa-Moya,
and Beatriz Xoconostle-Cázares***

**A two-component system is involved in the early stages
of the *Pisolithus tinctorius*-*Pinus greggii* symbiosis**

Plant Signaling & Behavior 2014; 9(3)

<http://dx.doi.org/10.4161/psb.28604>

www.landesbioscience.com/journals/psb/article/28604

Figure S1. Effect of plant regulators on colony morphology. *P.tinctorius* colonies grown at 7, 14, 21 and 28 days in MNM, supplemented with AS (200 μ M), Strigolactone (3.5 pM) or Zeatin (10 μ M) as indicated in material and methods. Bar in the upper, left panel is 1 cm and is common to all the images.

Figure S2. *Pisolithus tinctorius* bears the hybrid histidine kinase encoding-gene *Pthik1*. (a) Schematic representation of the gene indicating the Open Reading Frame (ORF), and nine predicted introns are indicated as inverted triangles. The conserved region, used for amplification is indicated with the inverted arrows. Blocks indicate the four HAMP, Histidine Kinase (HisKA), the HATPase-C or catalytic domain and the Receiver Domains (REC). H, Histidine, D, Aspartate conserved residues.

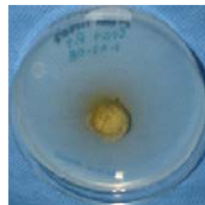
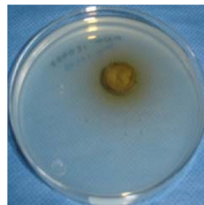
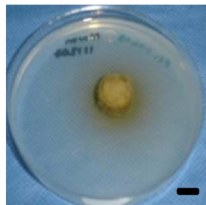
Control

Acetosyringone

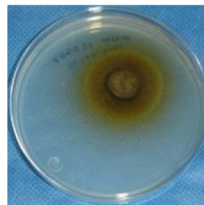
Strigolactone

Zeatin

7



14



21

days

