

Supporting Information

Figure S1

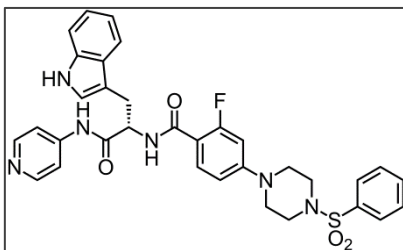


Figure 1. Chemical structure of the previously reported *S*-sulfonamide derivative, compound **27r**.

Figure S2

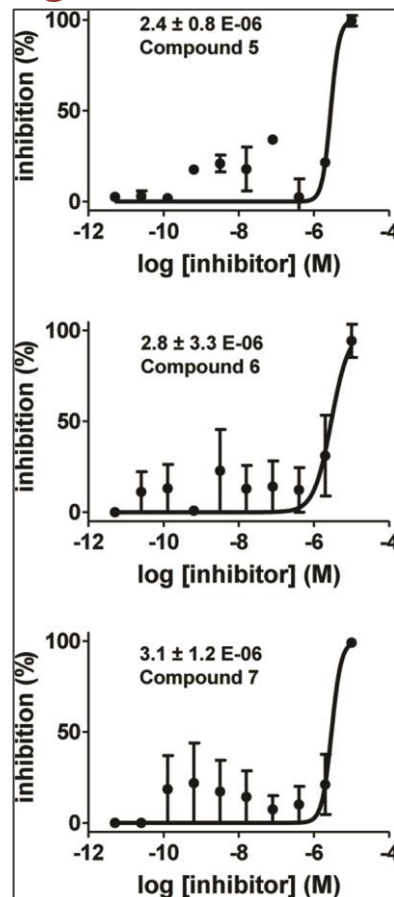


Figure 2. Efficacy, EC_{50} , of sulfonamide derivatives **5-7** in *T. cruzi* cell-based assay.

Figure S3

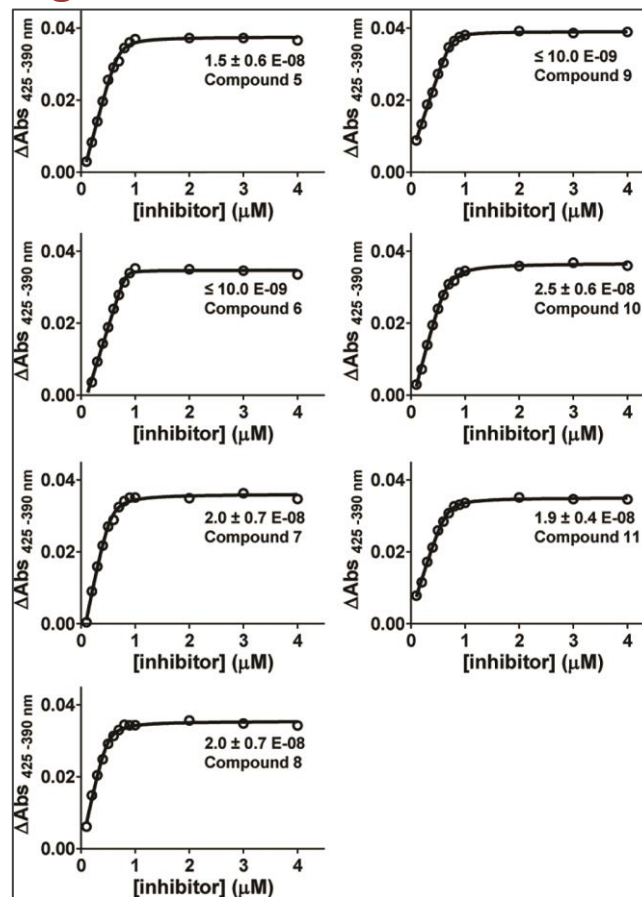


Figure 3. UV-vis titration curves for sulfonamide derivatives **5-11** demonstrating virtually stoichiometric linear saturation at sub-micromolar concentrations.