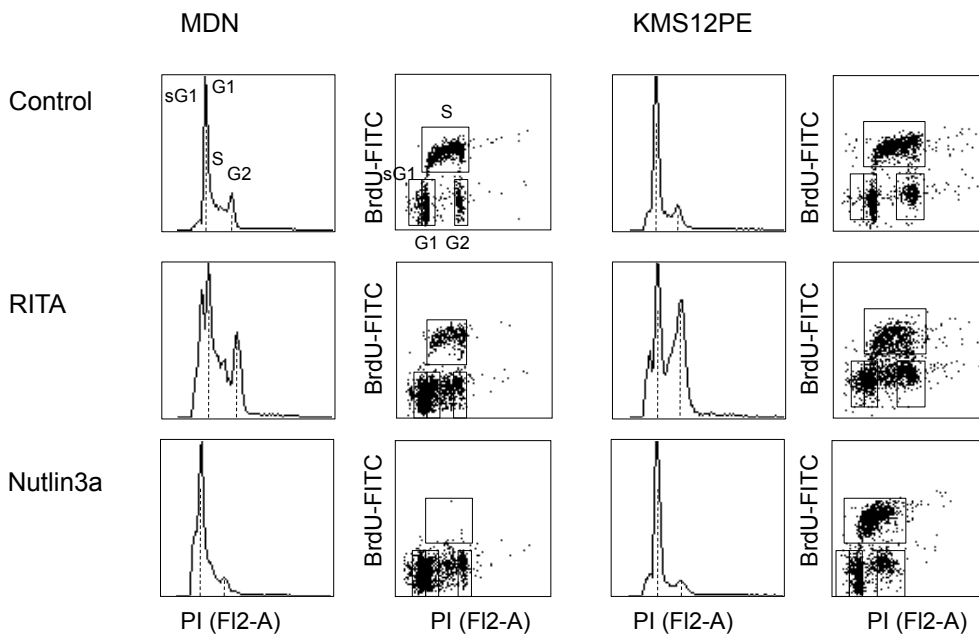


Figure S1



	Control	RITA	Nutlin3a	Control	RITA	Nutlin3a
subG1	1.6	35.4	29.4	1.7	12.6	2.6
G1	49.4	19.7	42.7	42.9	23.0	45.6
S	35.6	18.2	0.1	40.2	35.9	36.2
G2	9.0	8.7	14.3	13.2	21.2	18.7
G1-G2	1.4	18.0	13.4	2.0	7.2	0

Figure S1. The cell cycle was analyzed by BrdU and PI staining 24 h after RITA (100 nM) or nutlin3a (5  $\mu$ M for MDN, 10  $\mu$ M for KMS12PE) addition (see materials and methods). One representative experiment out of 2 is shown.