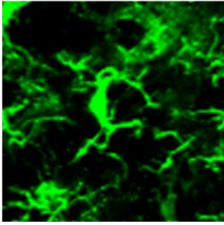
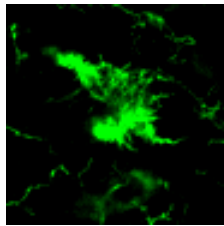


Resting (ramified) microglia have a small ovoid soma with numerous thin, branched processes.



Hypertrophic microglia have an enlarged soma from which radiates fewer and thicker branched processes.



Amoeboid microglia have a further enlarged soma with either a few short, thick, sparsely branched processes, or with no discernible processes at all.

Supplemental Figure 2. Criteria for grading resting and activated microglia. The microglia exemplifying the grading criteria are immunostained for CD11b and were identified in midbrain of EAAC1^{-/-} mice. Microglia with either hypertrophic or amoeboid morphology are considered “activated”.