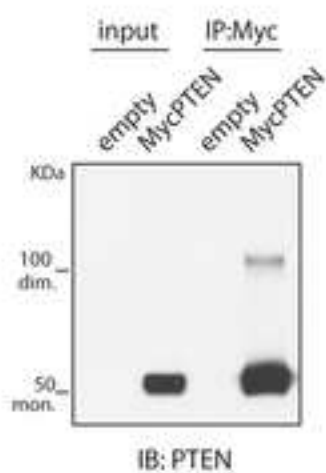


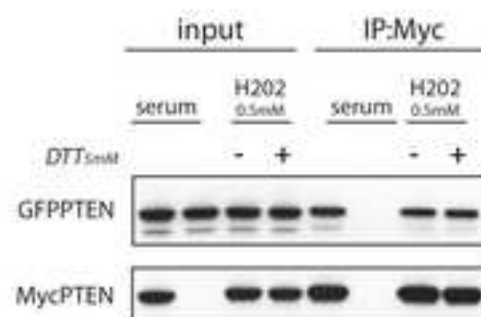
Supplemental Figure S1 related to Figure 1

Papa et al.

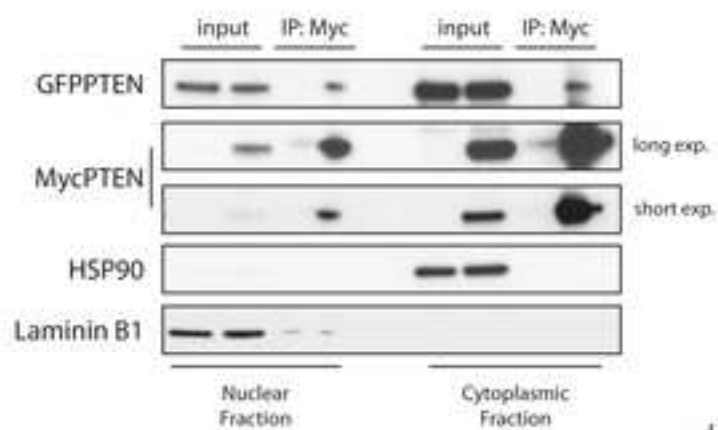
A



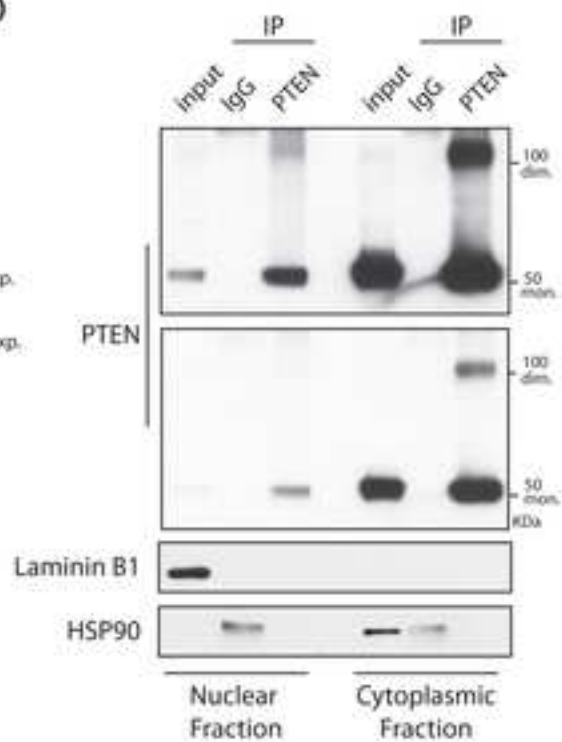
B



C

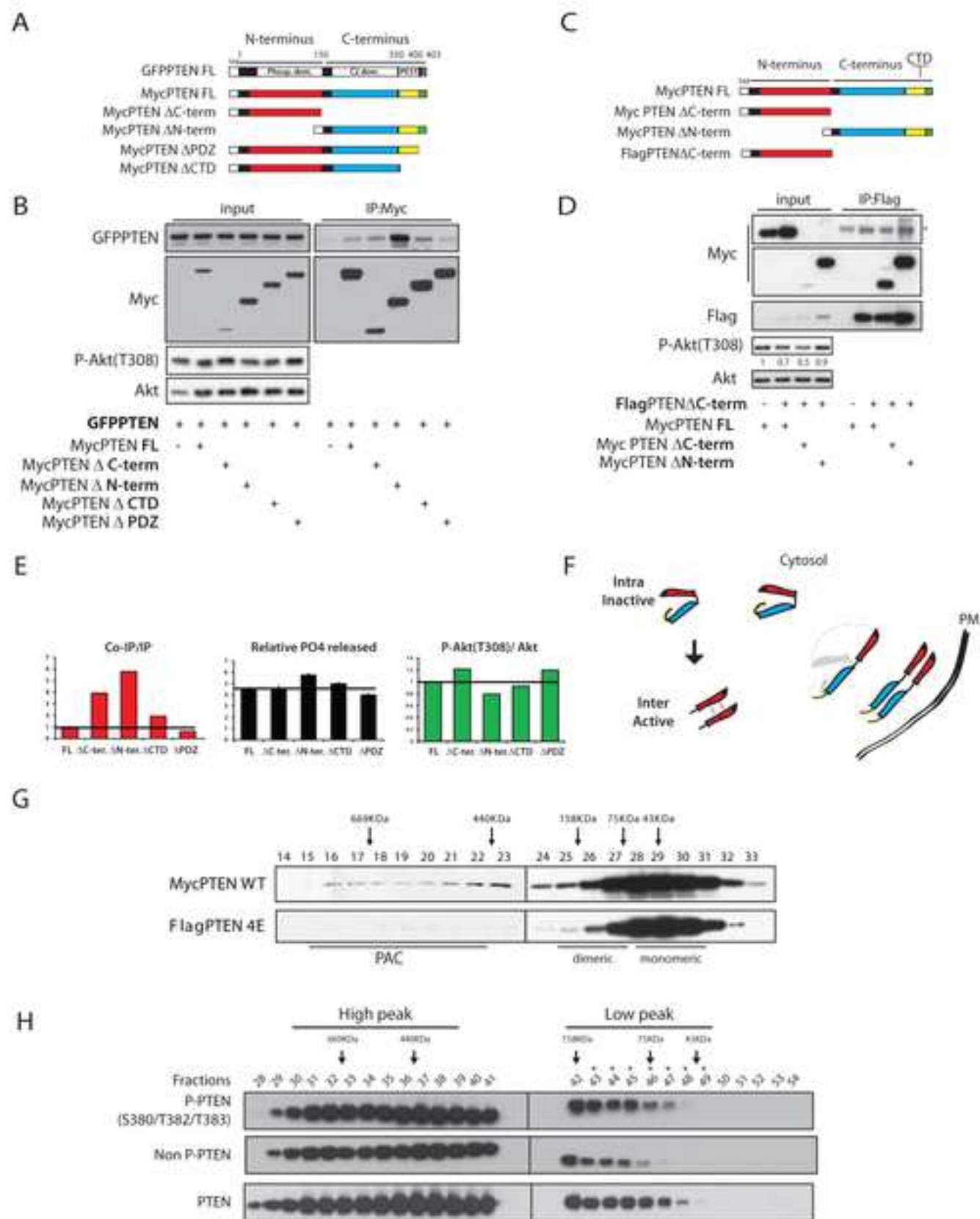


D



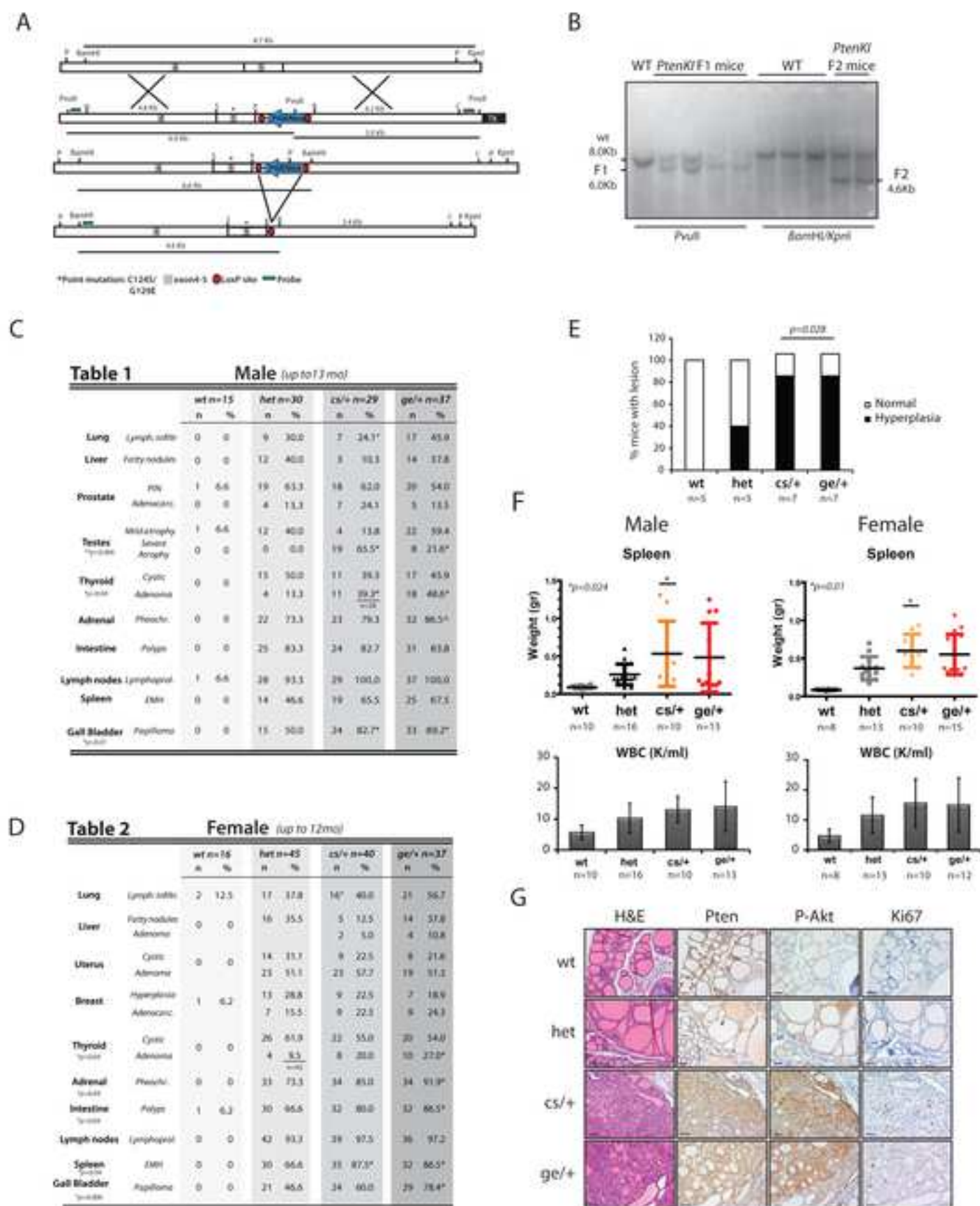
Supplemental Figure S2 related to Figure 2

Papa et al.



Supplemental Figure S3 related to Figure 3

Papa et al.



Supplemental Figure S4 related to Figure 4

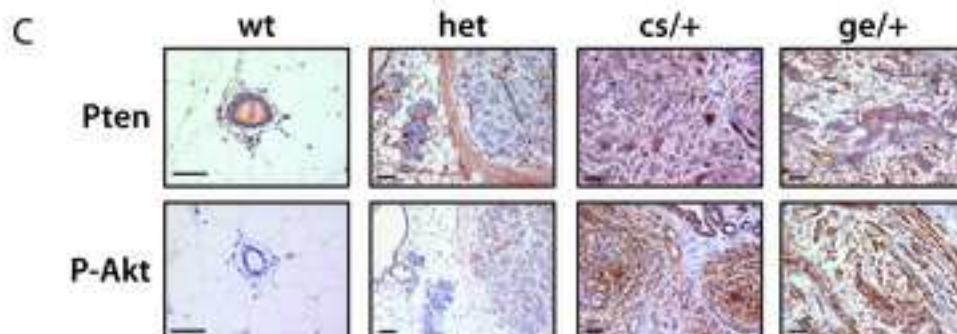
Papa et al.

A

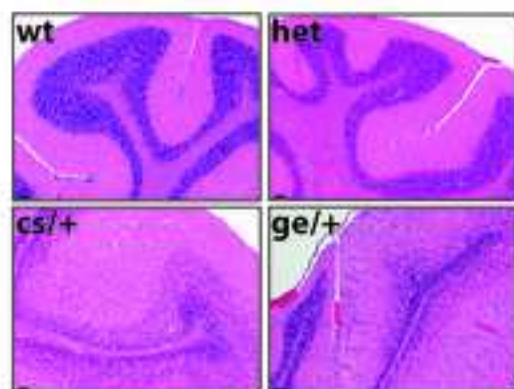
| | n=18 | expected | observed |
|---------------------------|------|----------|----------|
| <i>cs/+</i> X <i>cs/+</i> | | | |
| wt | | 25% | 28% |
| CS/+ | | 50% | 72% |
| CS/CS | | 25% | 0 |

B

| | n=10 | expected | observed |
|---------------------------|------|----------|----------|
| <i>ge/+</i> X <i>ge/+</i> | | | |
| wt | | 25% | 50% |
| GE/+ | | 50% | 50% |
| GE/GE | | 25% | 0 |



D

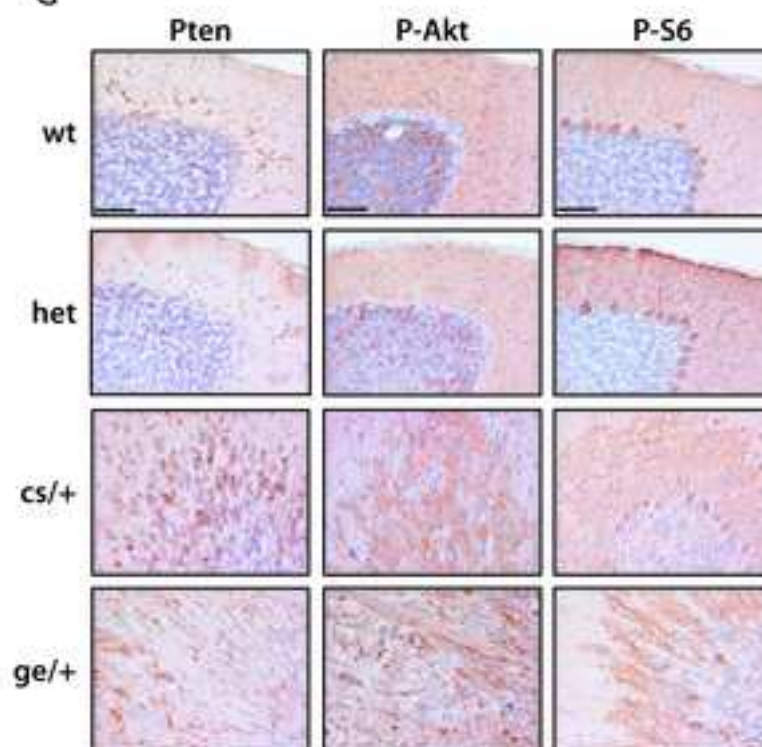


E

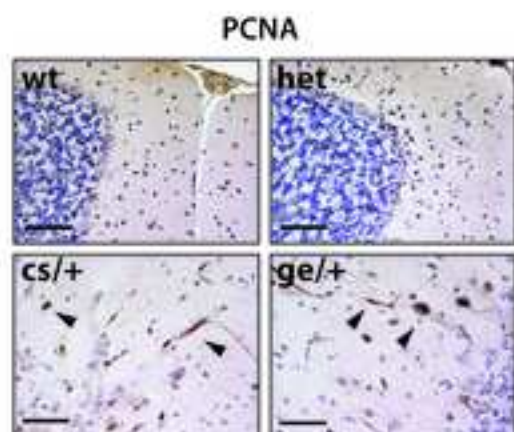
| | wt n=10 | | het n=25 | | cs/+ n=27 | | ge/+ n=40 | |
|---------|---------|-----|----------|----|-----------|----|-----------|----|
| | n | % | n | % | n | % | n | % |
| Normal | 10 | 100 | 8 | 32 | 12 | 44 | 30 | 75 |
| Adenoma | 0 | 0 | 17*** | 68 | 15* | 56 | 10 | 25 |

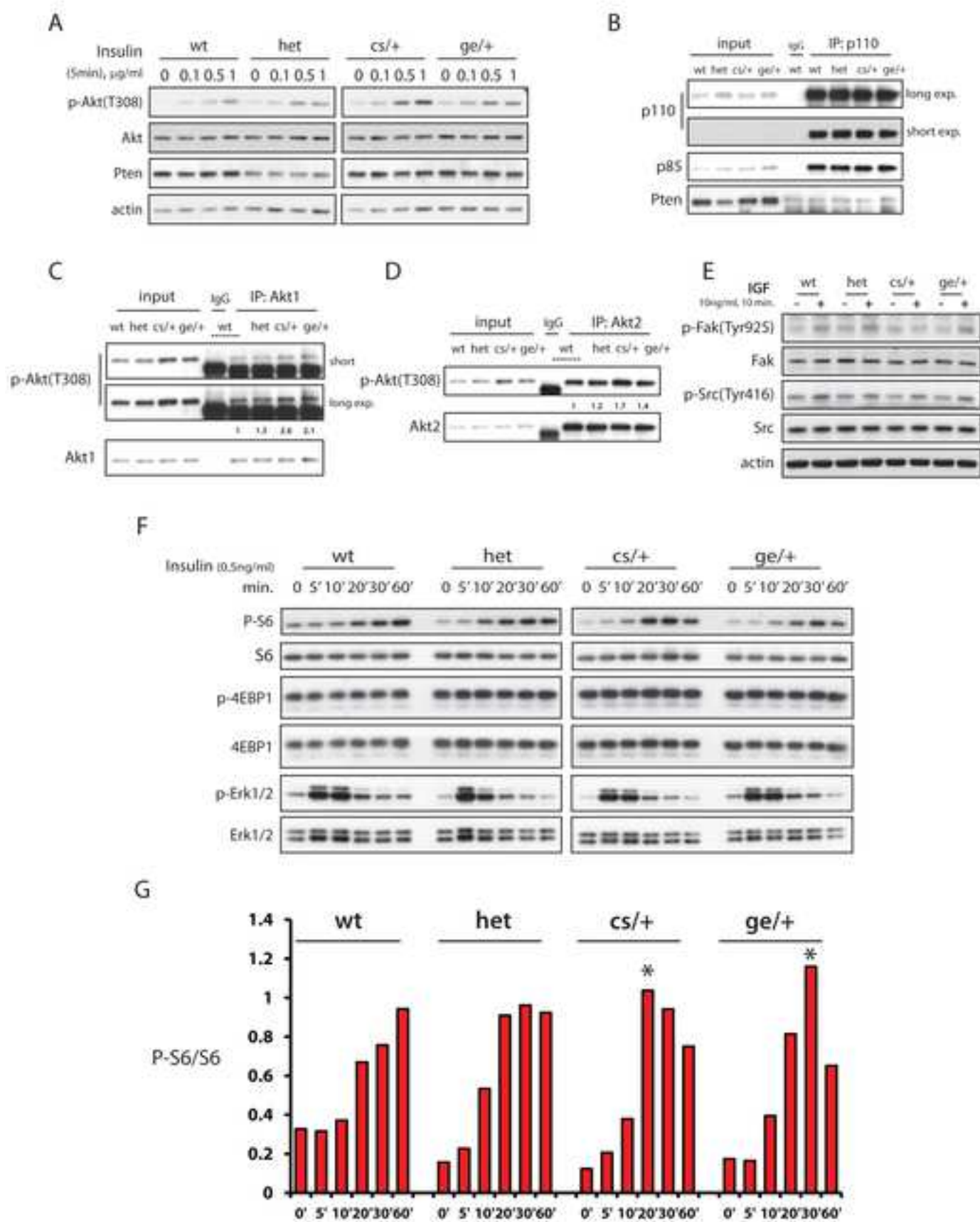
***p=0.0001 *p=0.02

G



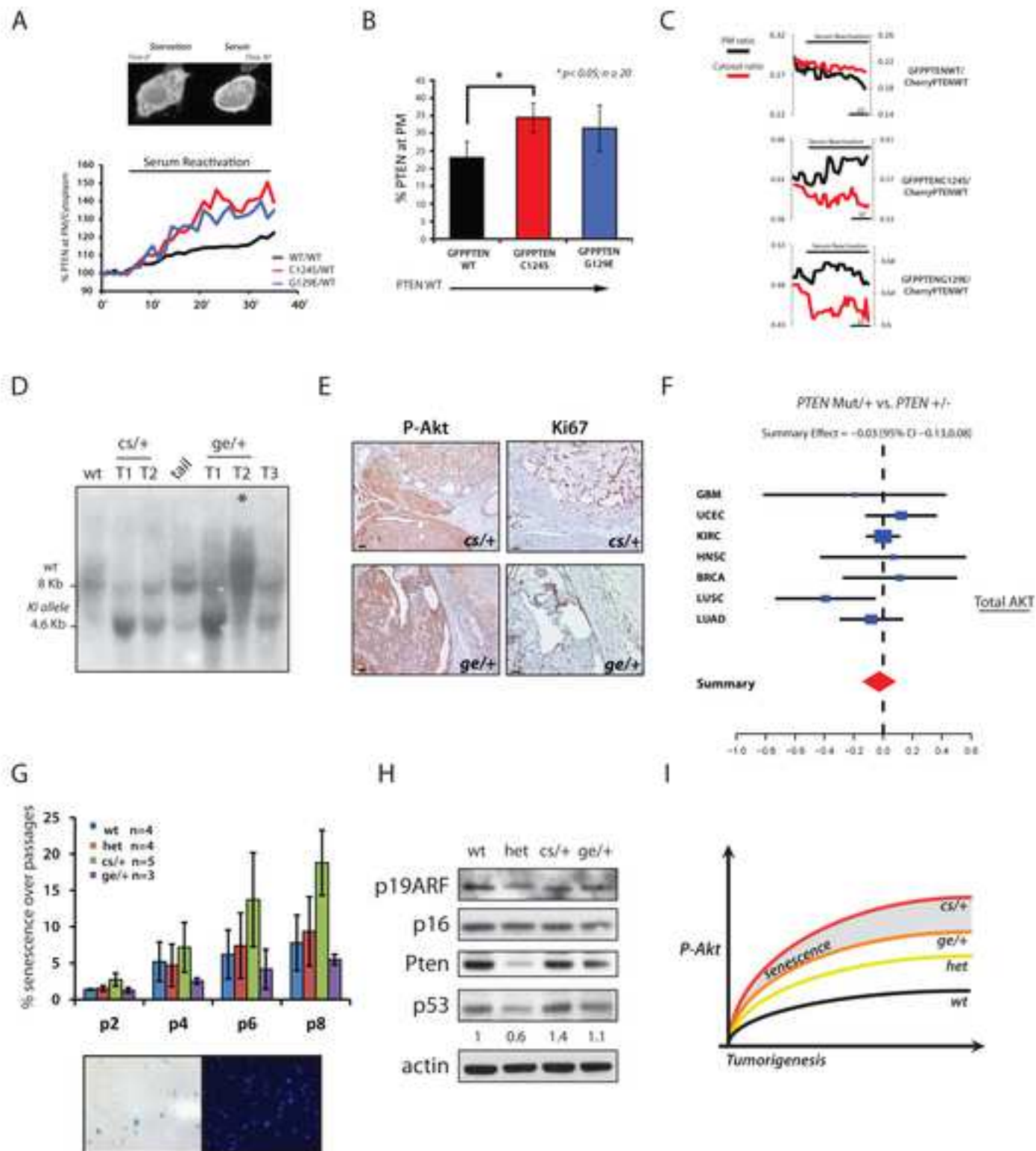
F





Supplemental Figure S6 related to Figure 6

Papa et al.



Supplemental Figure S7 related to Figure 7

Papa et al.

