

Supplementary Information

Figure S1. ESI-MS spectrum of 1.

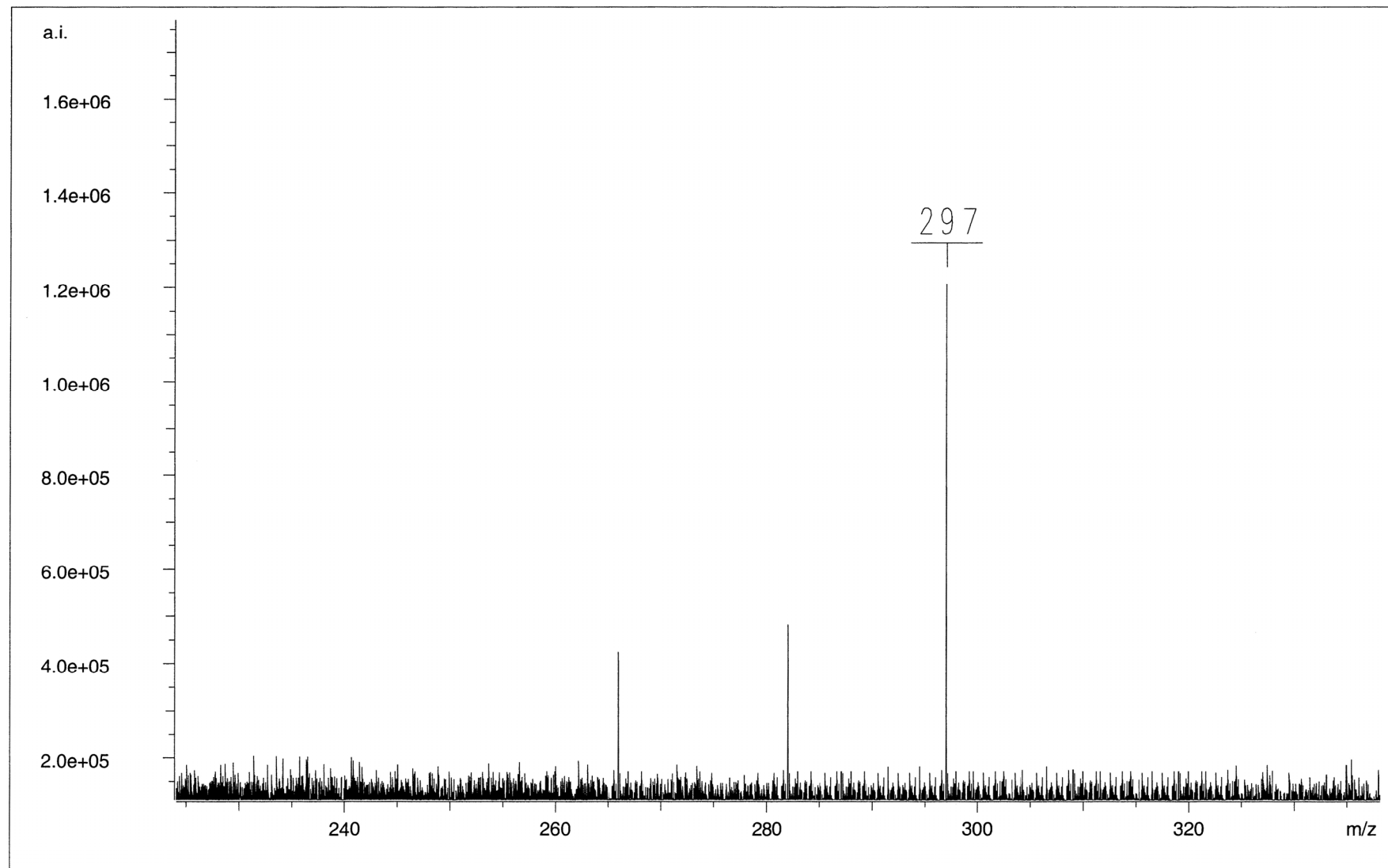


Figure S2. HR-ESI-MS spectrum of 1.

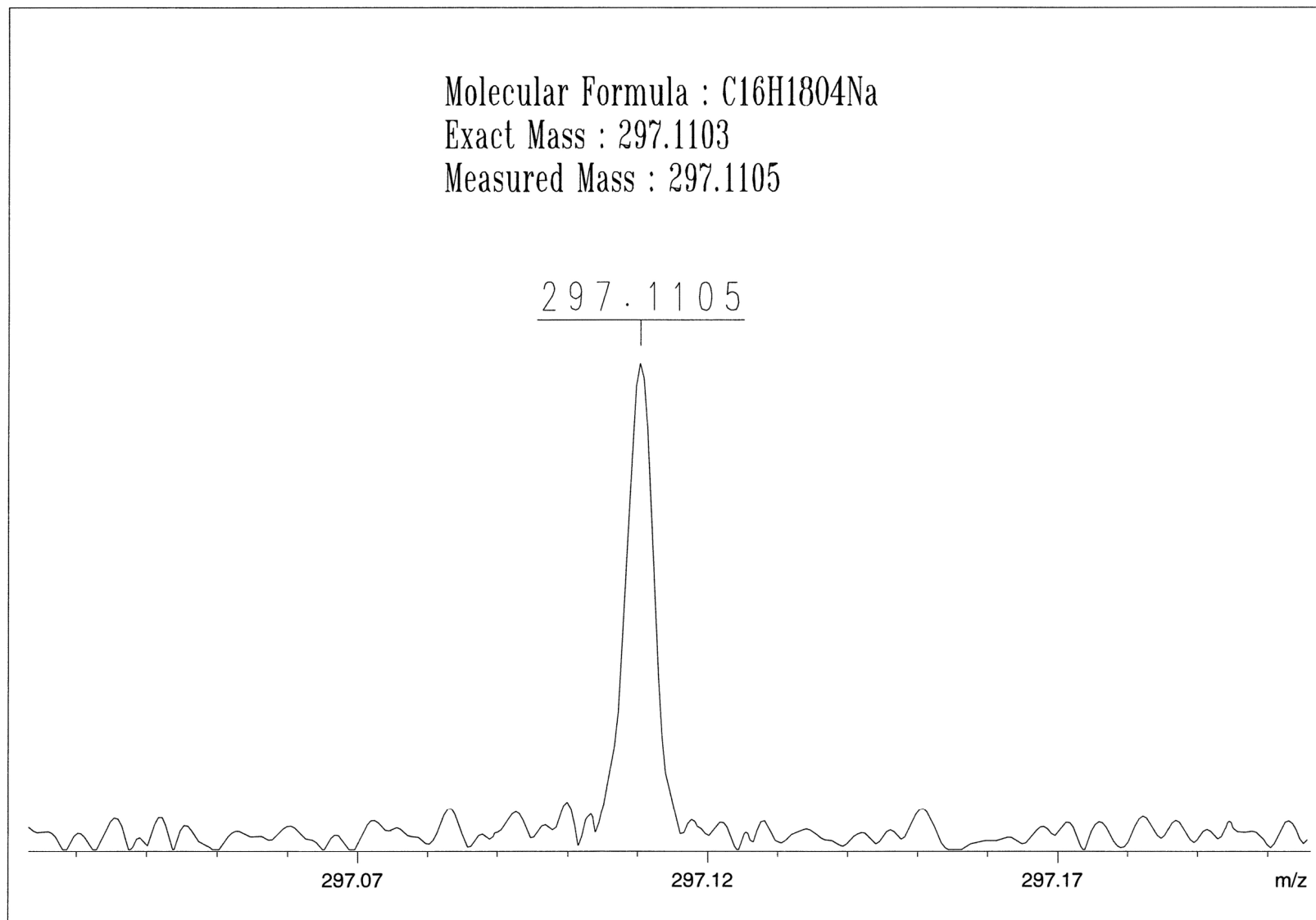


Figure S3. ¹H-NMR spectrum (CDCl₃, 500 MHz) of 1.

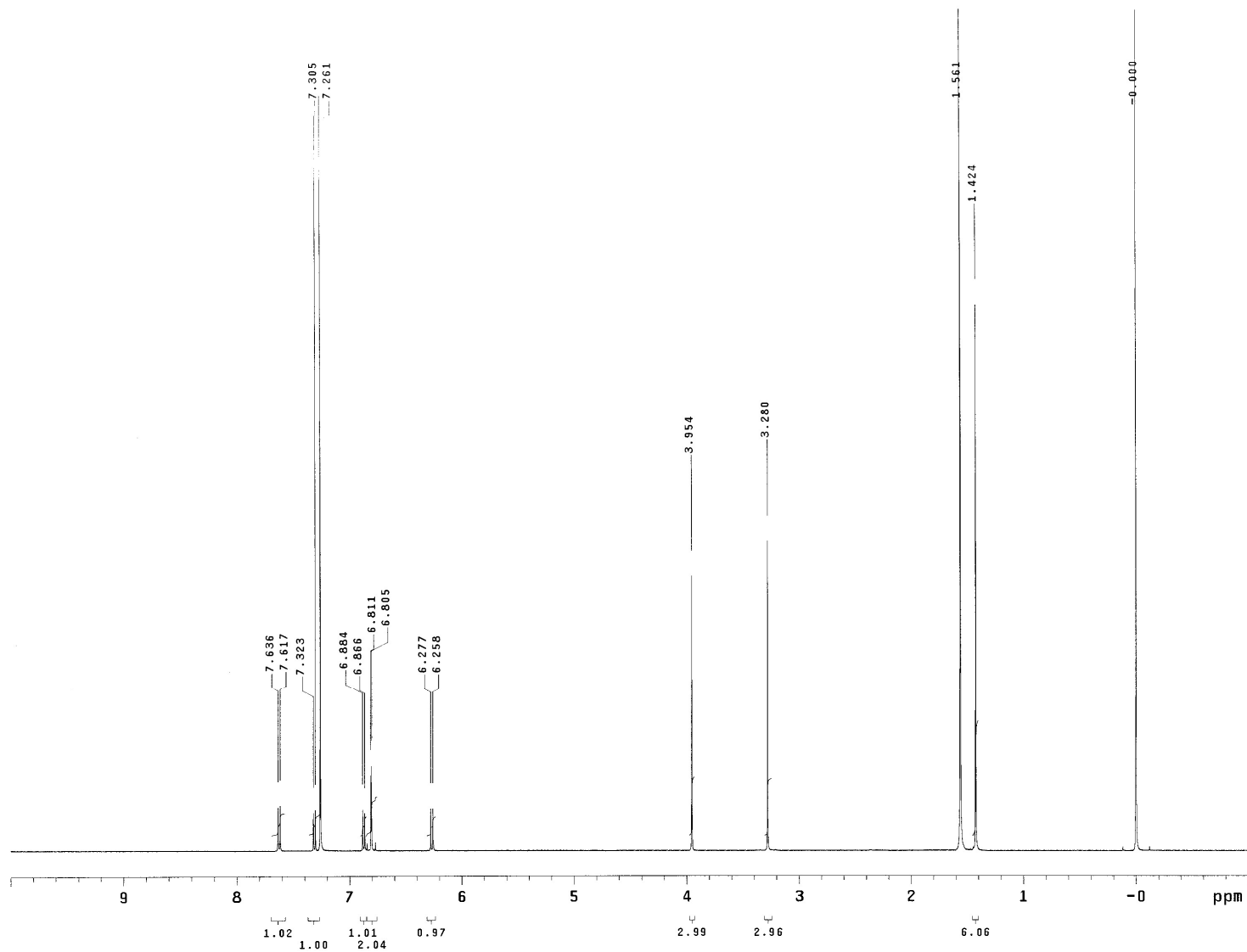


Figure S4. ^{13}C -NMR spectrum (CDCl_3 , 125 MHz) of 1.

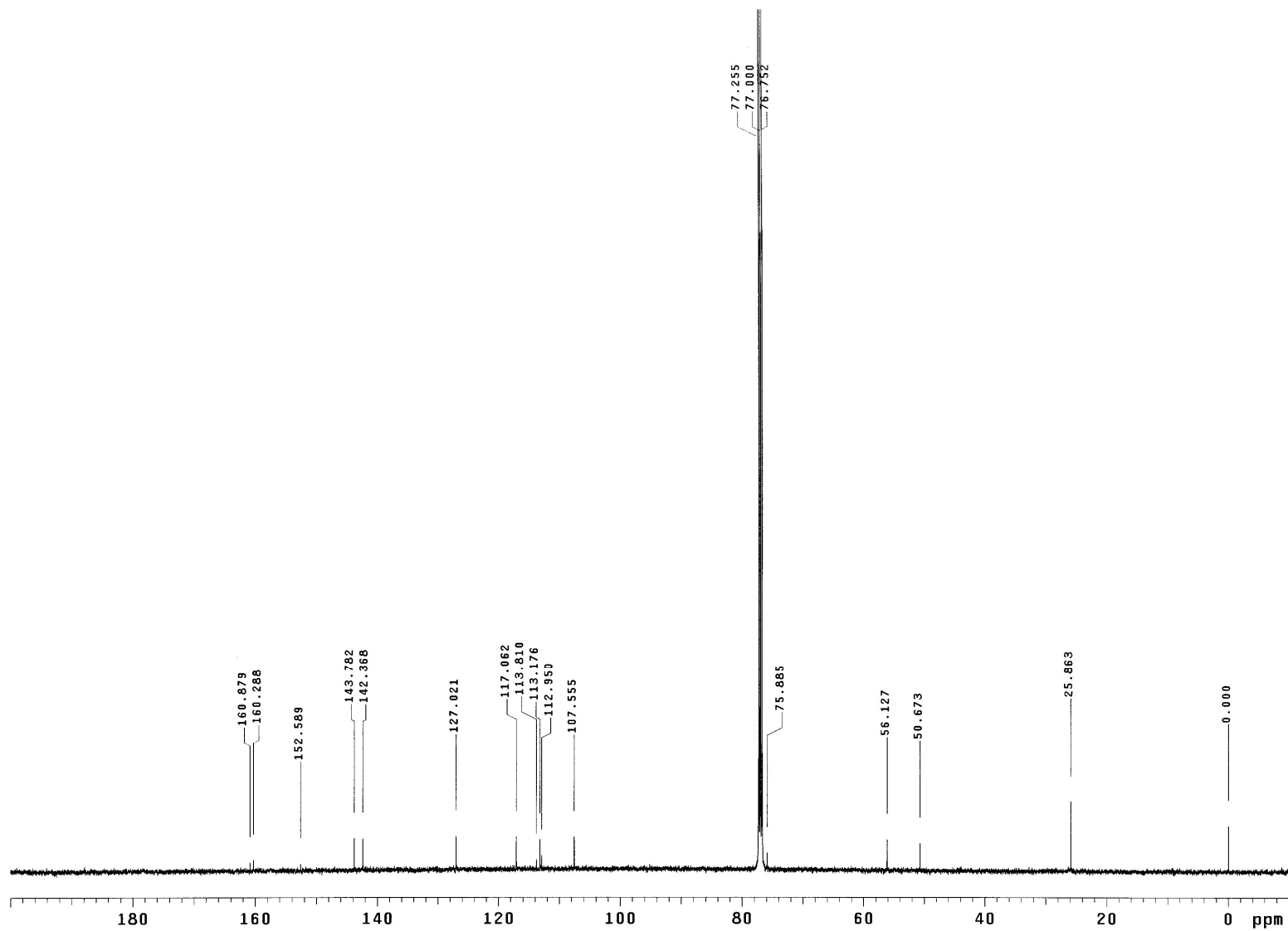


Figure S5. ESI-MS spectrum of 2.

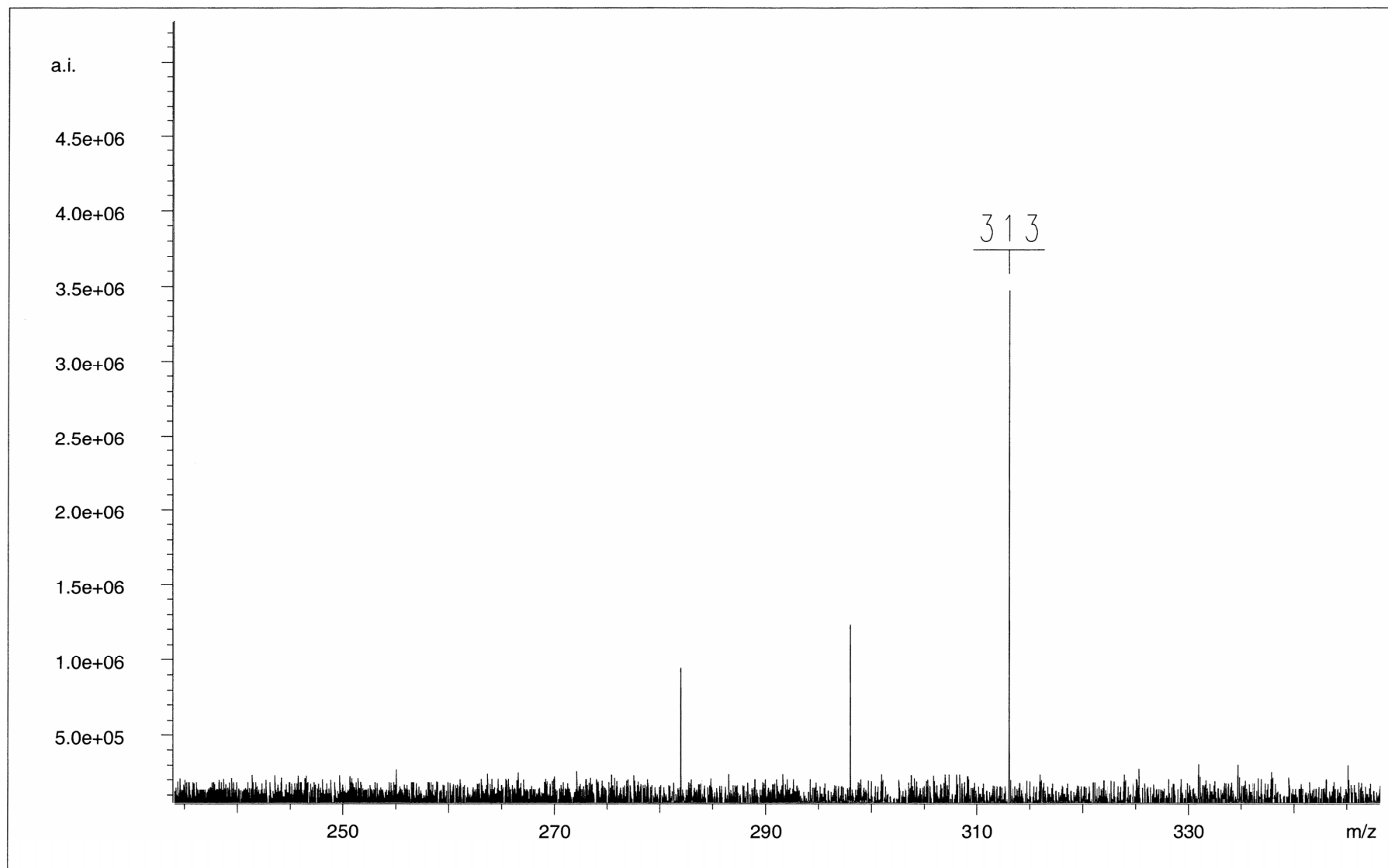


Figure S6. HR-ESI-MS spectrum of 2.

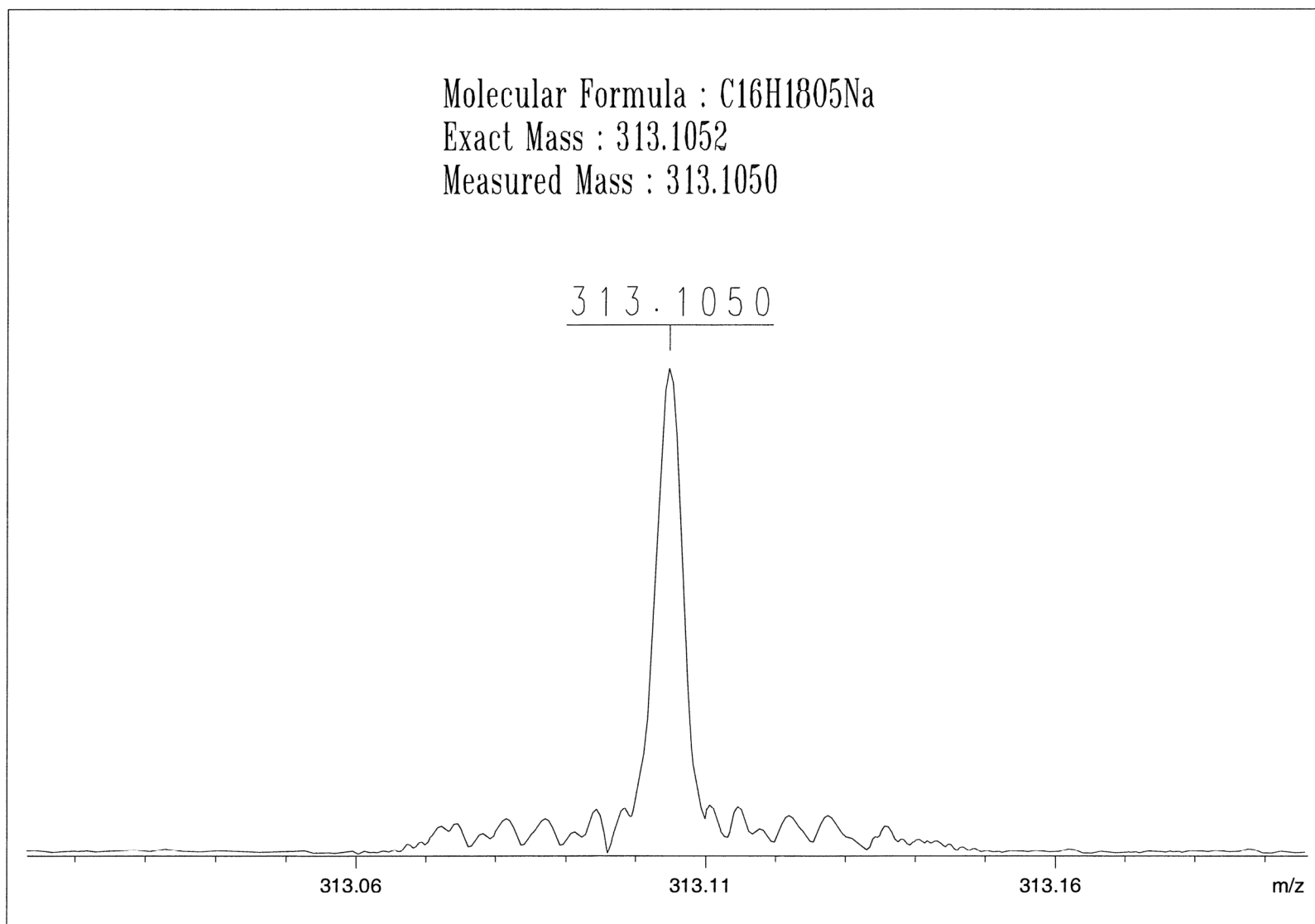


Figure S7. ¹H-NMR spectrum (CDCl₃, 500 MHz) of 2.

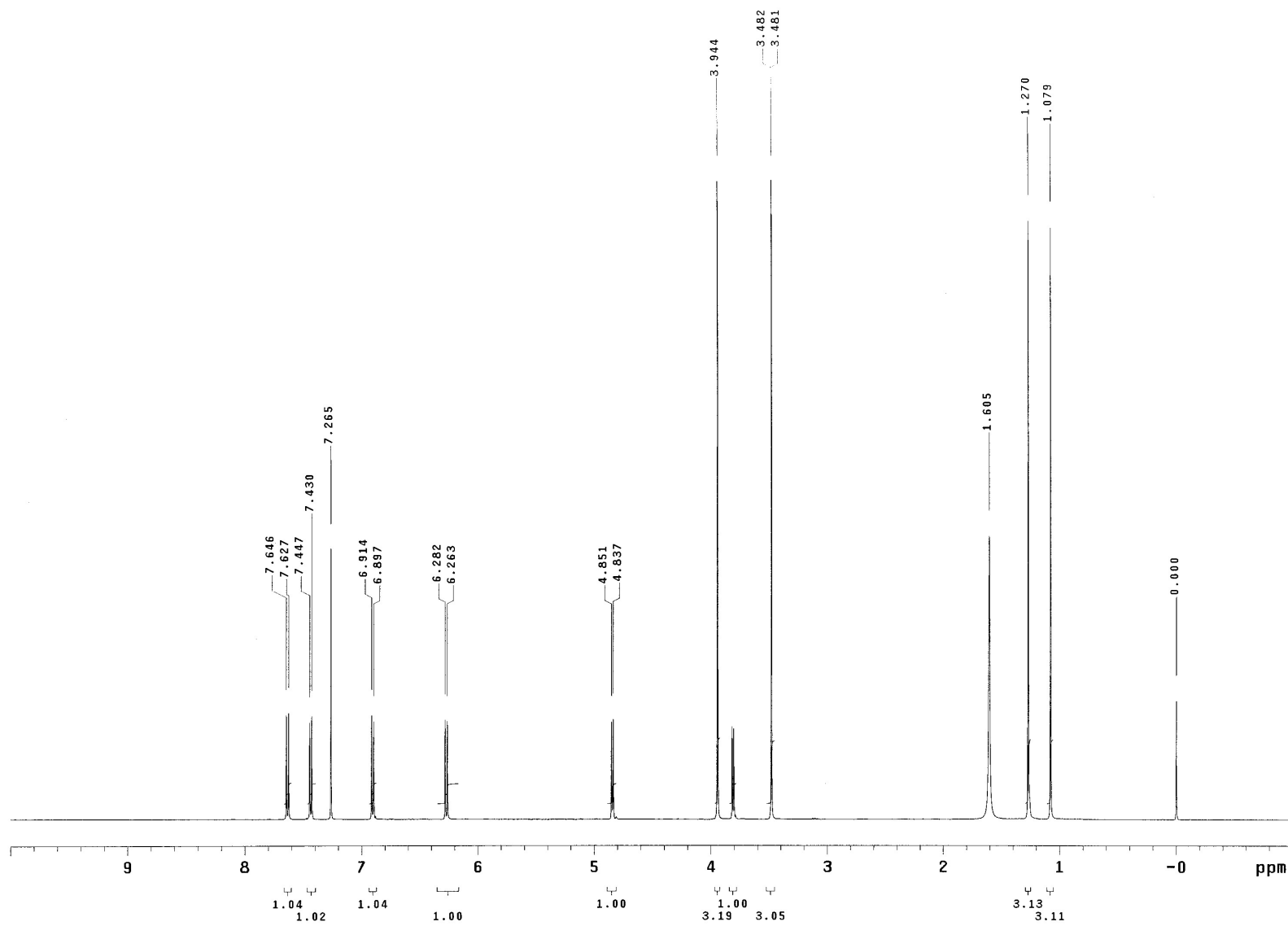


Figure S8. ^{13}C -NMR spectrum (CDCl_3 , 125 MHz) of 2.

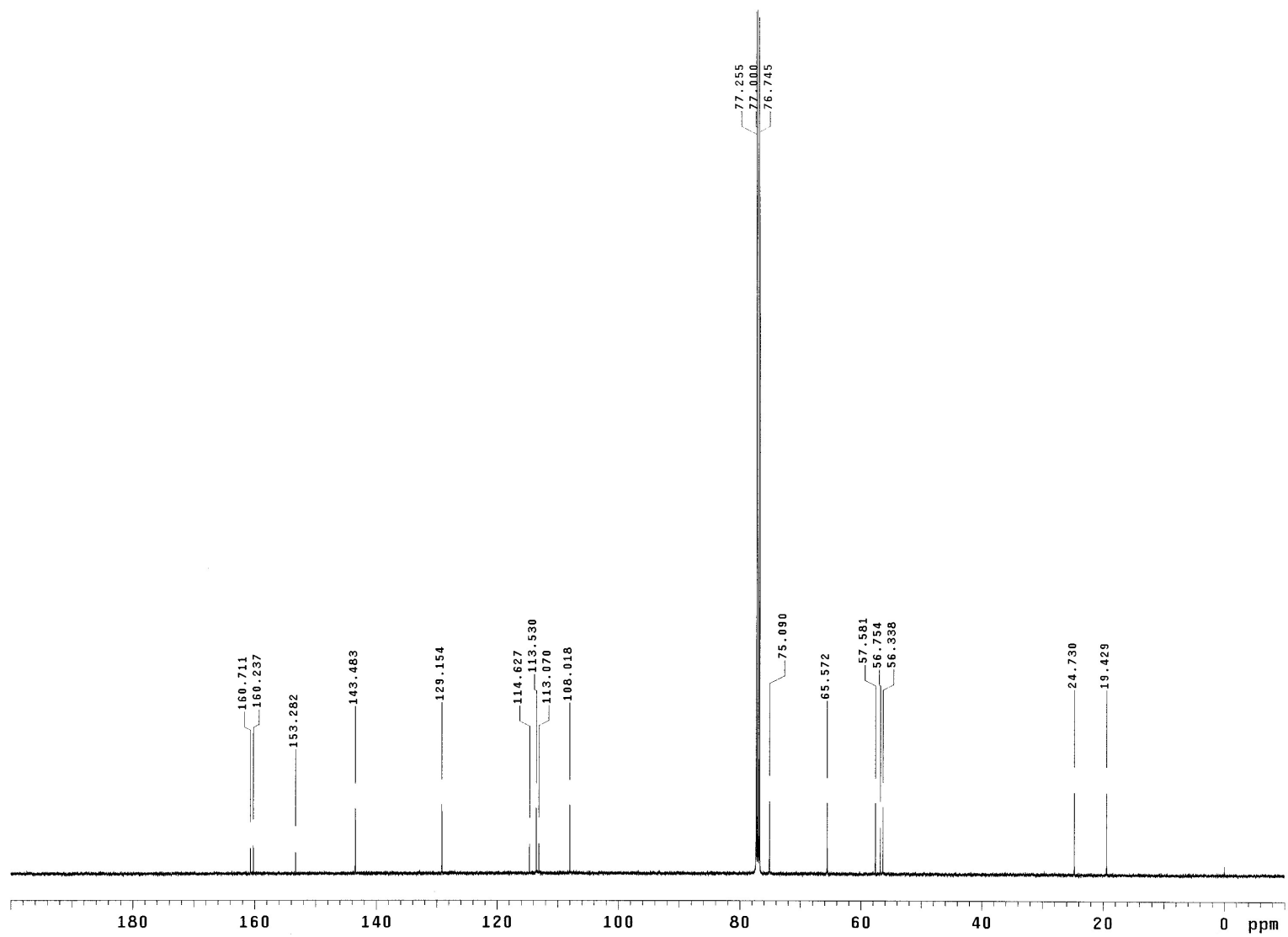


Figure S9. ESI-MS spectrum of 3.

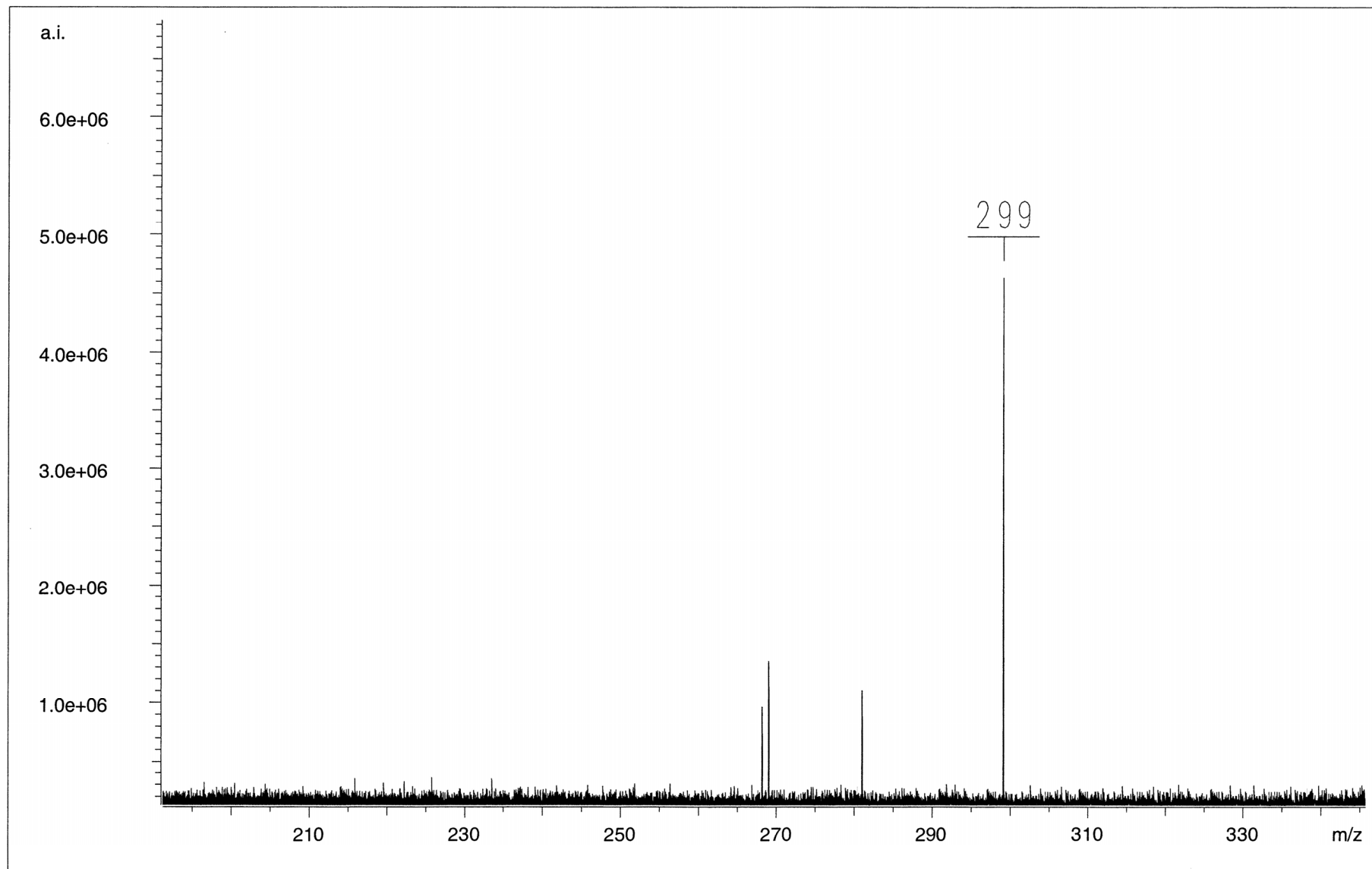


Figure S10. HR-ESI-MS spectrum of 3.

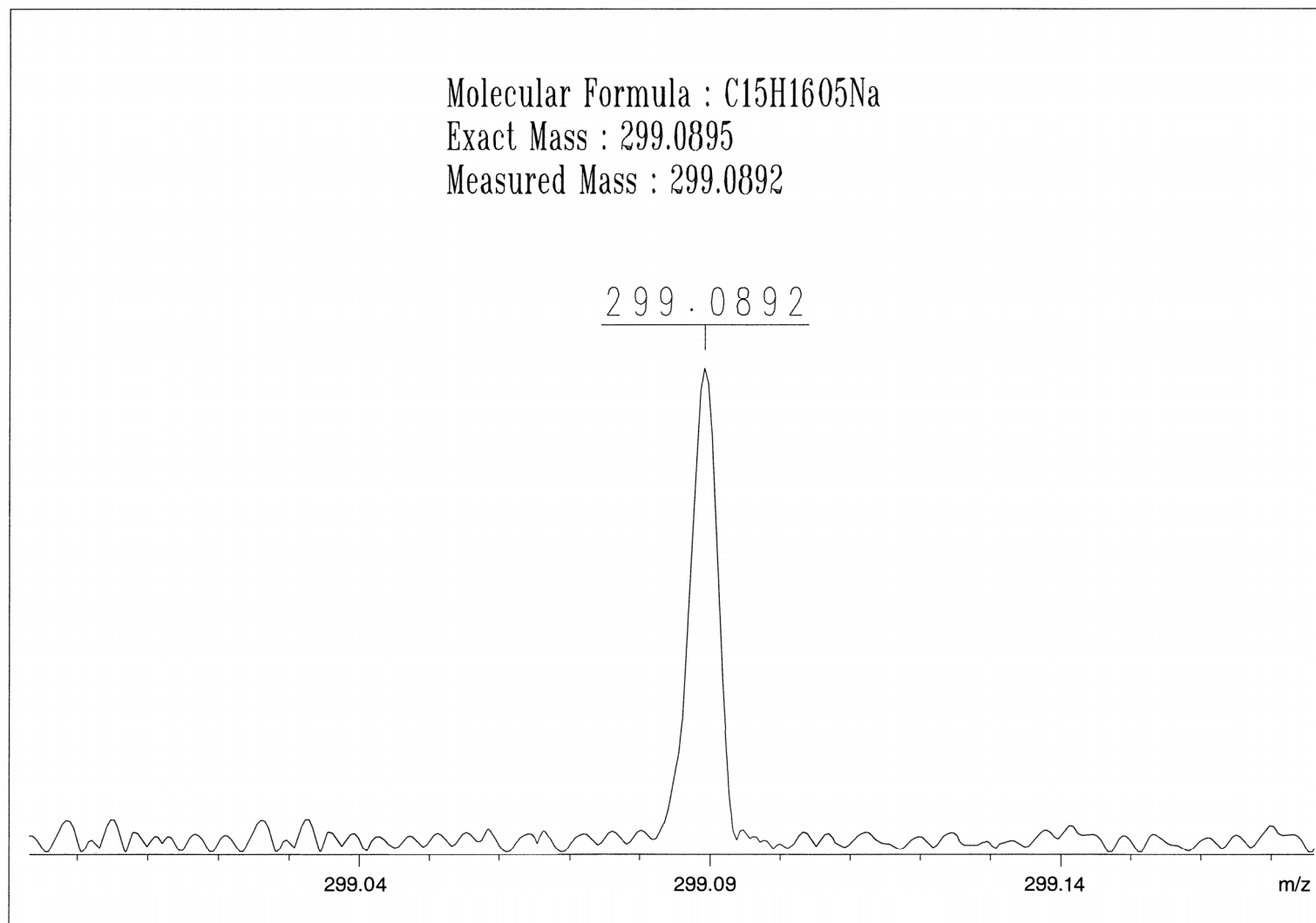


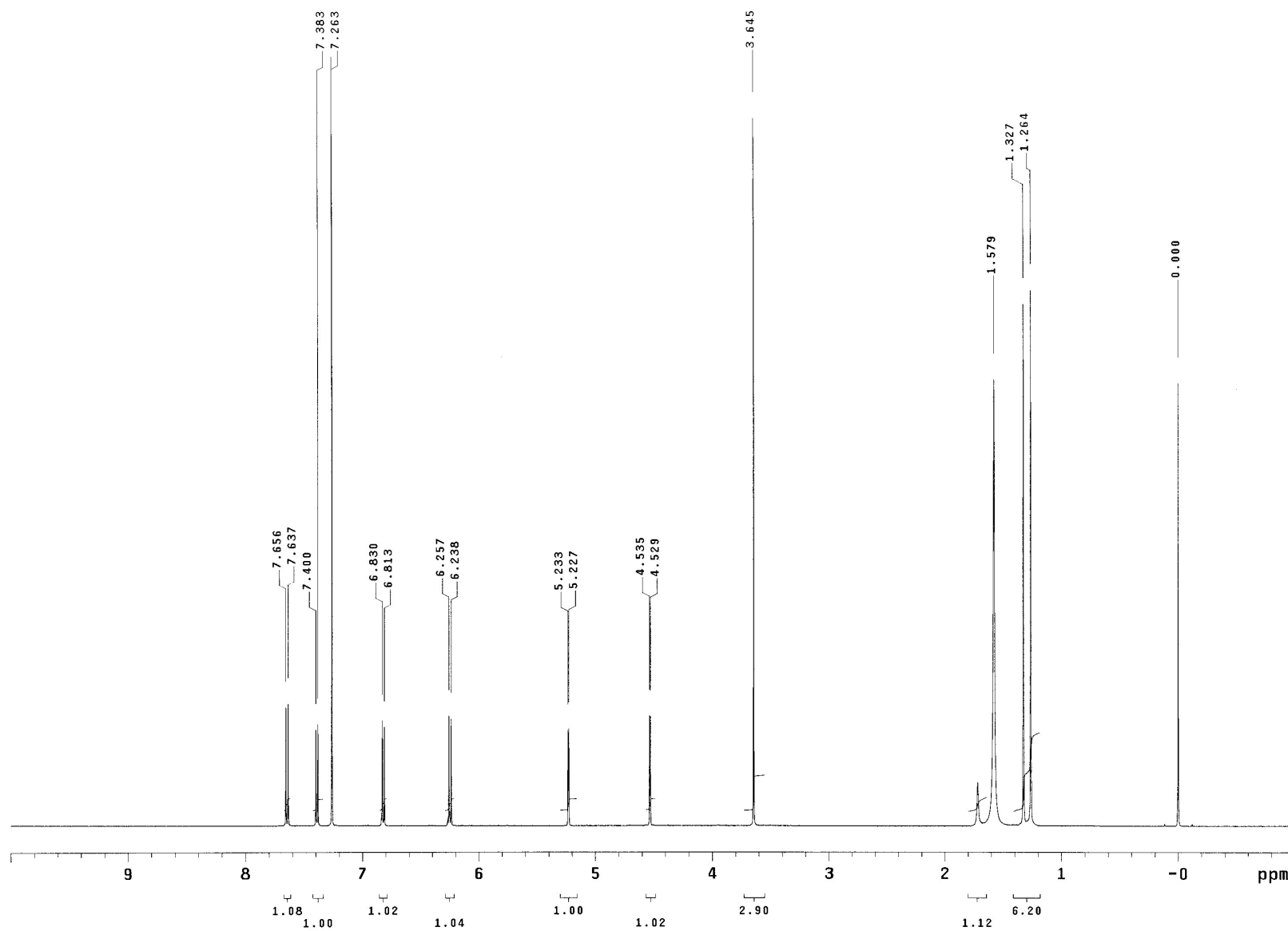
Figure S11. $^1\text{H-NMR}$ spectrum (CDCl_3 , 500 MHz) of **3**.

Figure S12. ^{13}C -NMR spectrum of **3** (CDCl_3 , 125 MHz).

