

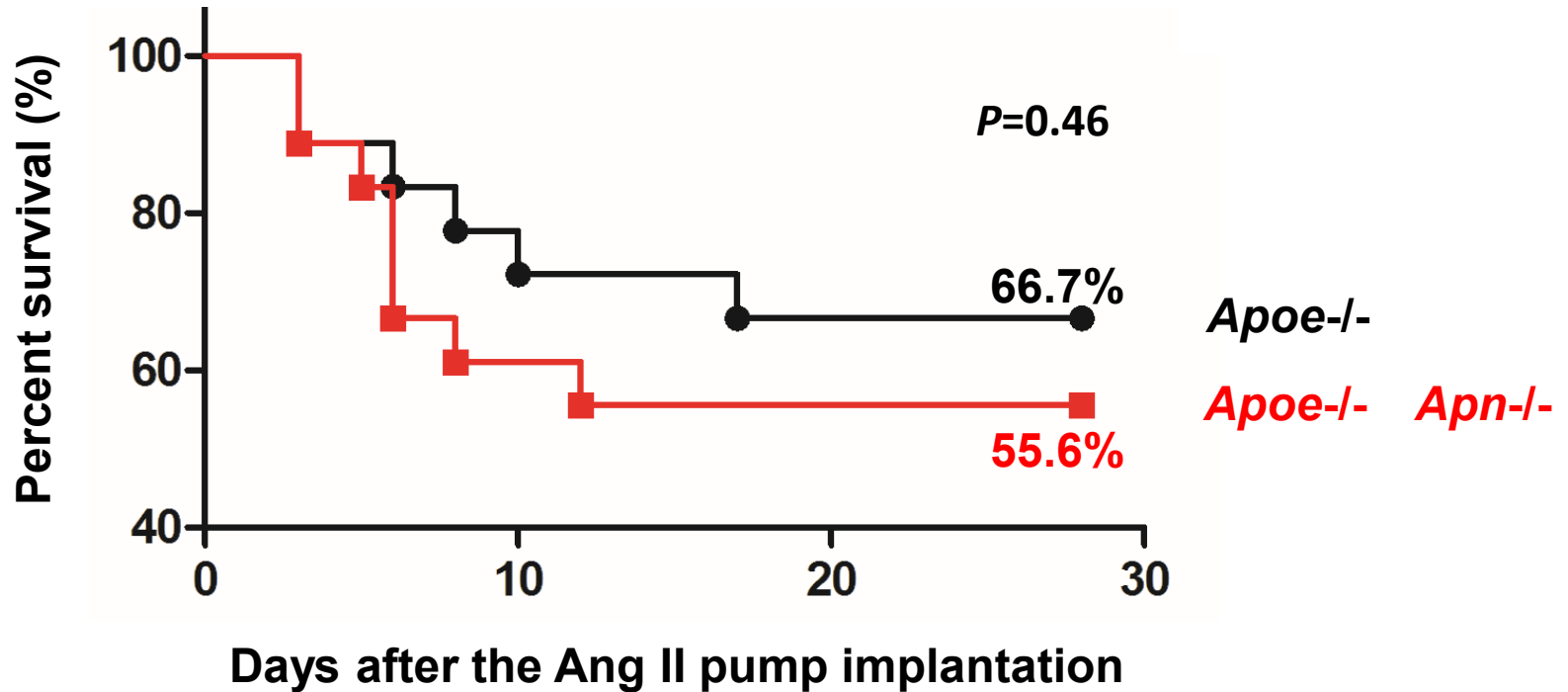
Supplemental Methods

Blood Pressure and heart rate analysis

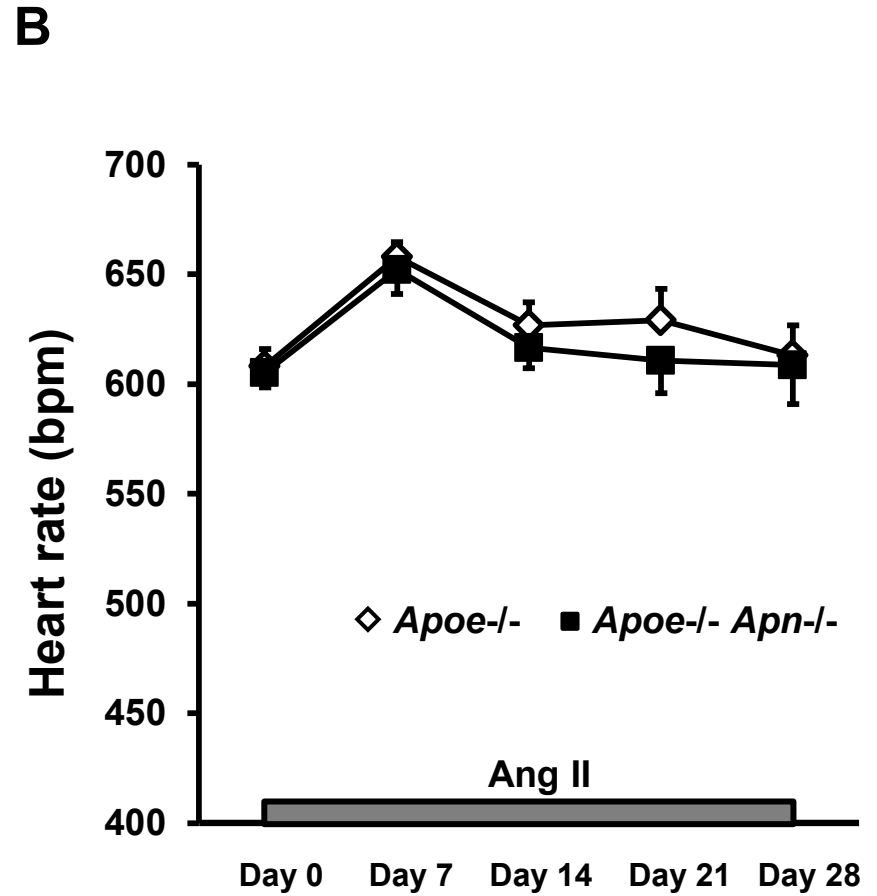
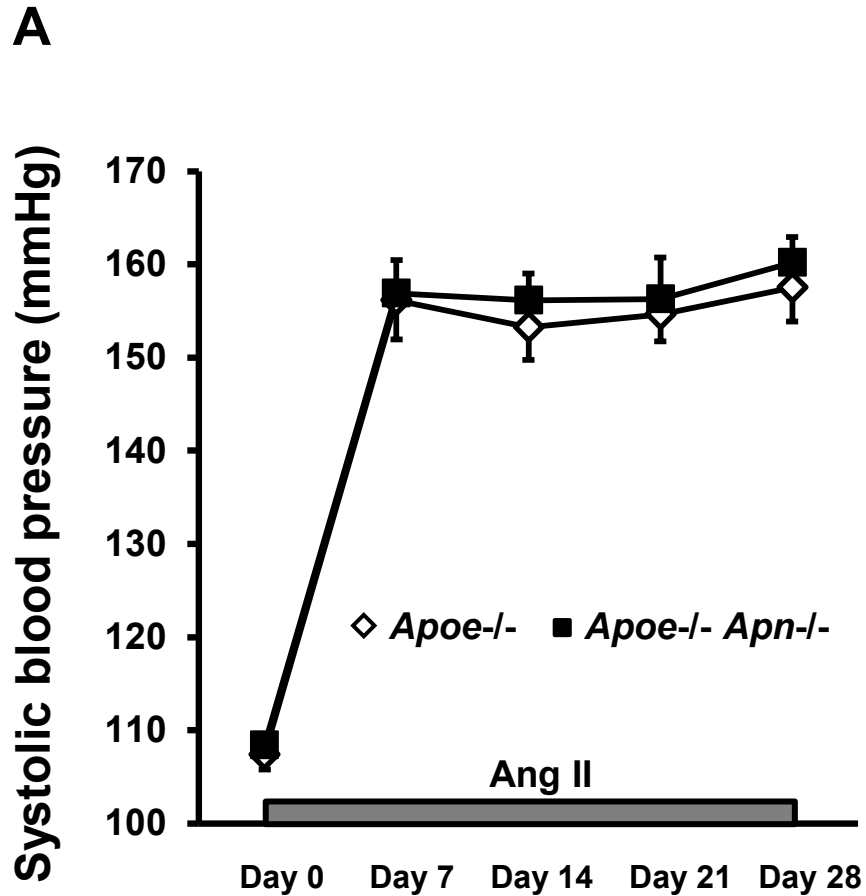
Systolic blood pressure and heart rate were noninvasively measured with tail-cuff technique, using a BP-2000 Blood Pressure Analysis System (Visitech Systems, Inc.) ($n=10$ in each group). Ten readings were obtained for each experiment, and the average value was assigned to each individual mouse.

Supplemental Table. Primer sequences used for gene expression analysis.

Gene	Forward	Reverse
<i>Adipoq</i>	5' GGAGATGCAGGTCTTCTTGG 3'	5' CGAATGGGTACATTGGGAAC 3'
<i>Tnf</i>	5' CATCTTCTCAAATTCGAGTGACAA 3'	5' TGGGAGTAGACAAGGTACAACCC 3'
<i>Il1b</i>	5' TGAAGTTGACGGACCCCAA 3'	5' TGATGTGCTGCTGTGAGATT 3'
<i>Il6</i>	5' ACAACCACGGCCTTCCCTACTT 3'	5' CACGATTTCCAGAGAACATGTG 3'
<i>Ccl2</i>	5' GGCTCAGCCAGATGCAGTTAAC 3'	5' GCCTACTCATTGGGATCATCTTG 3'
<i>Emr1</i>	5' CTTTGGCTATGGGCTTCCAGTC 3'	5' GCAAGGAGGACAGAGTTTATCGTG 3'
<i>Cd68</i>	5' TTCTCCAGCTGTTACCTTGACCT 3'	5' GTTGCAAGAGAAACATGGCCCGAA 3'
<i>Gapdh</i>	5' TGTGTCCGTCGTGGATCTGA 3'	5' TTGCTGTTGAAGTCGCAGGAG 3'
<i>Actb</i>	5' AGGGAAATCGTGCGTGACAT 3'	5' ACCGCTCGTTGCCAATAGTG 3'
<i>Rplp0</i>	5' GCTCCAAGCAGATGCAGCA 3'	5' CCGGATGTGAGGCAGCAG 3'



Supplemental Figure 1. Mouse survival rate after implantation of the pump delivered Ang II. $n=18$ in each group. $P=0.46$ using log-rank test.



Supplemental Figure 2. Systolic blood pressure (**A**) and heart rate (**B**) of *Apoe*^{-/-} and *Apoe*^{-/-} *Apn*^{-/-} mice before and during the period of Ang II infusion. Results are mean ± SEM. *n*=10 in each group.