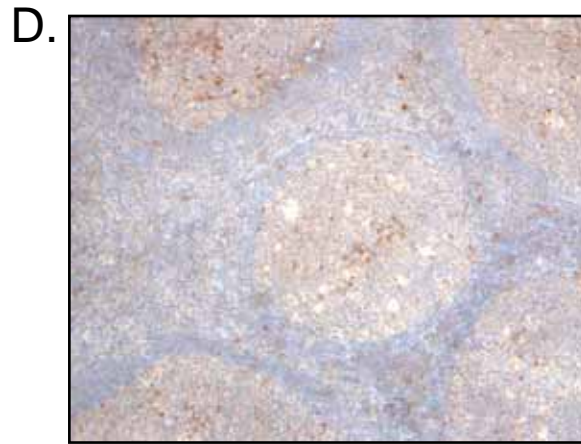
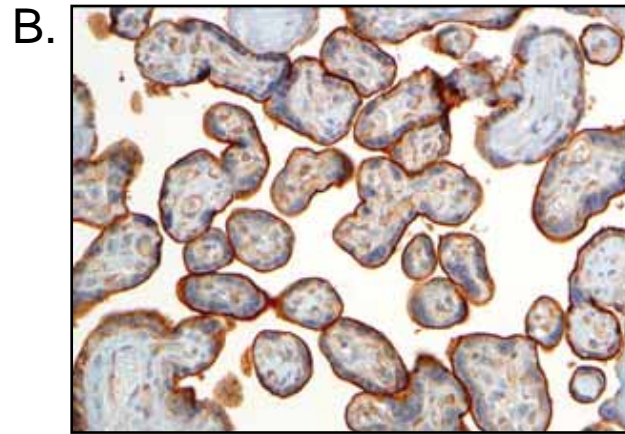
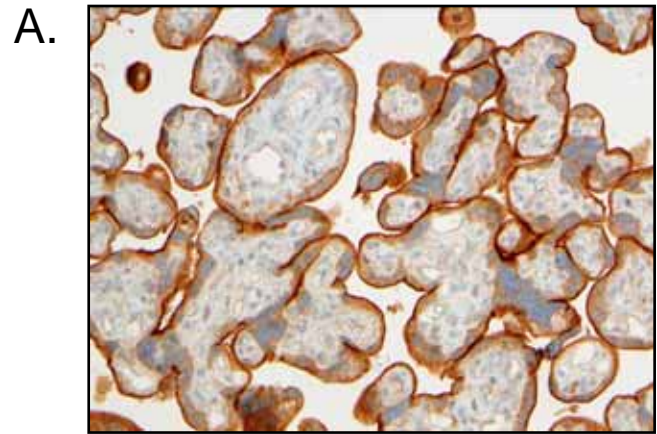


SUPPLEMENTAL FIGURE LEGENDS

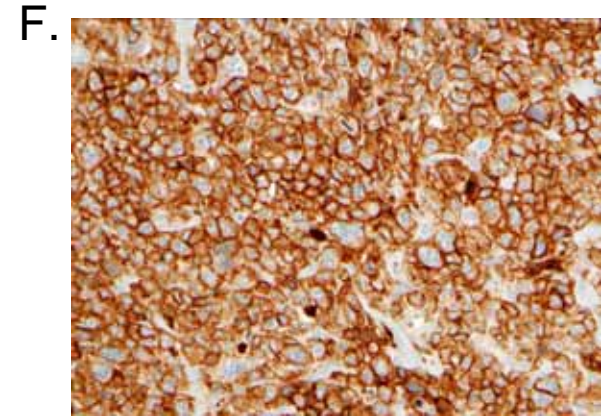
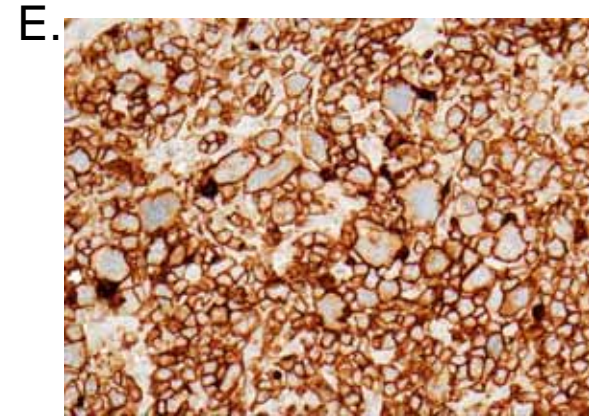
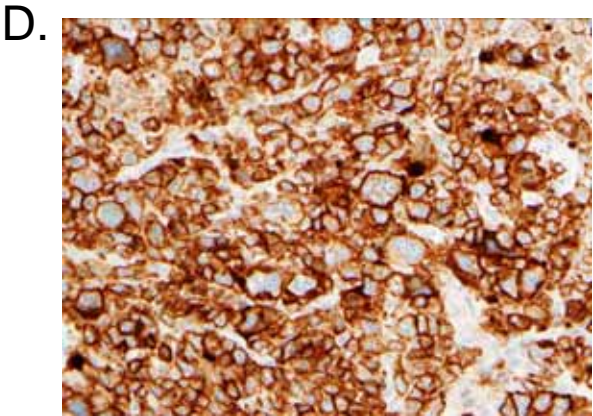
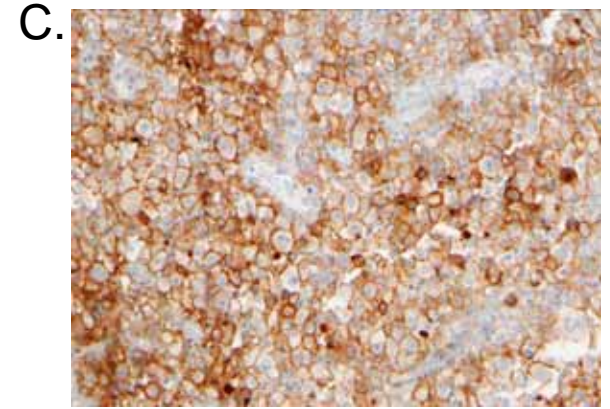
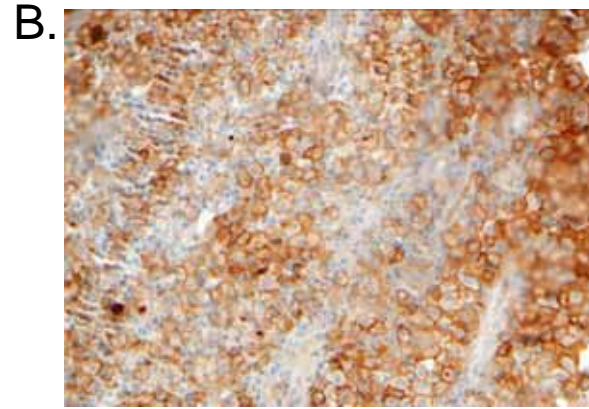
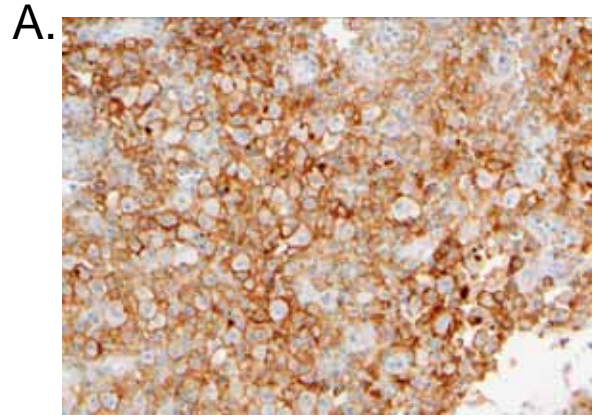
Figure S1. (A) Human placenta stained with the rabbit PD-L1 monoclonal antibody (original lot concentration of 0.22 mg/ml) and showing membrane staining of syncytiotrophoblasts and, (B) the same case stained with the mouse PD-L1 monoclonal antibody (original lot concentration of 0.65 mg/ml). (C) Human tonsil stained with the rabbit PD-L1 monoclonal antibody (original lot concentration of 1.55 mg/ml) and, (D) stained with the rabbit PD-L1 monoclonal antibody (original lot concentration of 0.22 mg/ml) and, (E) stained with the mouse PD-L1 monoclonal antibody (original lot concentration of 0.65 mg/ml).

Figure S2. (A-C) Case of classical Hodgkin lymphoma stained with (A) the rabbit PD-L1 monoclonal antibody (original lot concentration of 1.55 mg/ml), (B) the rabbit PD-L1 monoclonal antibody (original lot concentration of 0.22 mg/ml), and (C) the mouse PD-L1 monoclonal antibody (original lot concentration of 0.65 mg/ml). (E-F) Case of EBV-negative PTLN stained with (D) the rabbit PD-L1 monoclonal antibody (original lot concentration of 1.55 mg/ml), (E) the rabbit PD-L1 monoclonal antibody (original lot concentration of 0.22 mg/ml), and (F) the mouse PD-L1 monoclonal antibody (original lot concentration of 0.65 mg/ml).

Supplemental Figure S1



Supplemental Figure S2



Supplemental Table 1. Pathological Characteristics and PD-L1 Expression in Hodgkin Lymphomas and Related Cases

Diagnosis	Case #	EBV status	% malignant cells	% malignant cells positive *	% total tumor cellularity positive**
NSCHL	1	-	20	95	80
	2	-	5	95	70
	3	-	2	90	70
	4	-	5	95	60
	5	+	5	95	50
	6	nd	10	90	40
	7	+	5	90	40
	8	+	5	50	40
	9	-	2	95	40
	10	-	10	95	30
	11	-	10	95	30
	12	+	2	95	30
	13	nd	2	0	30
	14	-	10	95	20
	15	-	10	95	20
	16	+	5	95	20
	17	nd	5	95	20
	18	-	5	90	20
	19	+	2	90 (1+/M)***	20
	20	+	5	95	10
	21	-	5	90	10
	22	-	2	90 (2+/C)***	10
	23	-	2	80	10
	24	nd	5	10	5
	25	-	2	20 (1+/C)***	2
MCCHL	1	+	2	95	80
	2	+	10	90	70
	3	-	10	80	70
	4	+	2	90	70
	5	-	2	95	60
	6	+	2	90	40
	7	-	2	70	20
	8	-	2	90 (1+/C)***	10
CHL-NOS	1	-	90	90	90
	2	-	90	90	90
	3	-	50	90	90
	4	-	10	50	80
	5	+	2	95	50
NLPHL	1	-	5	2	20
	2	nd	2	20 (1+/M)***	10

	3	-	2	5	10
	4	nd	2	5	10
	5	nd	2	0	10
	6	-	2	0	10
	7	-	2	0	10
	8	nd	2	0	10
	9	nd	2	0	5
	10	nd	2	0	5
	11	nd	2	0	5
	12	nd	2	0	5
	13	-	2	0	5
	14	-	2	0	5
	15	-	2	0	5
PMBCL	1	nd	90	90 (2+/C) ***	90
	2	nd	90	90	90
	3	-	90	90 (2+/C) ***	90
	4	nd	90	90 (1+/M) ***	90
	5	nd	90	90	90
	6	nd	90	90	90
	7	-	90	90	90
	8	nd	80	90	90
	9	nd	90	80	90
	10	-	80	80	90
	11	nd	20	50	90
	12	nd	90	80	80
	13	-	80	70	80
	14	-	80	70	70
	15	-	80	30	70
	16	nd	60	70	60
	17	nd	90	50 (2+/C) ***	50
	18	nd	70	20 (2+/C) ***	30
	19	nd	80	10	30
	20	nd	90	10	10
	21	nd	90	0	5
TCHRBCL	1	nd	50	90	90
	2	-	5	5	80
	3	nd	5	90	70
	4	-	5	10	70
	5	-	20	50	60
	6	-	10	90	60
	7	nd	10	50	60
	8	nd	30	80	50
	9	nd	5	50	50
	10	-	20	0	40
	11	-	20	5	30

* $\geq 2+$ membranous staining; ** $\geq 2+$ membranous and/or cytoplasmic staining; *** scored as negative; NSCHL - nodular sclerosis classical Hodgkin lymphoma (CHL);

MCCHL - mixed cellularity CHL; NOS - not otherwise specified; NLPHL - nodular lymphocyte predominant Hodgkin lymphoma; PMBCL - primary mediastinal large B-cell lymphoma; TCHRBCCL - T-cell/histiocyte-rich large B-cell lymphoma; nd - not determined; M - membranous; C - cytoplasmic; gray shading denotes cases scored as negative in either malignant cells and/or total cellularity.

Supplemental Table 2. Pathological Characteristics and PD-L1 Expression in Non-Hodgkin Lymphoma Cases

Diagnosis	Case #	EBV status	% malignant cells	% malignant cells positive *	% total tumor cellularity positive**
EBV+ DLBCL	1	+	90	90	90
	2	+	90	90	90
	3	+	90	90	85
	4	+	80	80	80
	5	+	80	70	80
	6	+	40	30	80
	7	+	40	80	70
	8	+	40	20	70
	9	+	90	60	60
	10	+	70	30	60
	11	+	70	20	50
	12	+	70	20	50
	13	+	60	20	40
	14	+	70	10	40
	15	+	50	10	40
	16	+	70	5	40
EBV+ PTL D	1	+	90	90 (2+/C) ***	90
	2	+	90	90	90
	3	+	90	90	90
	4	+	90	90	90
	5	+	90	90	85
	6	+	90	80	80
	7	+	90	80	80
	8	+	80	20 (1+/M) ***	30 (1+/M) ***
	9	+	90	20 (1+/M) ***	20 (1+/M) ***
	10	+	90	0	0
EBV-neg PTL D	1	-	95	95	95
	2	-	90	90 (1+/C) ***	90 (1+/C) ***
	3	-	90	90 (1+/C) ***	85 (1+/C) ***
	4	-	80	90	80
	5	-	80	30	60
	6	-	80	10	50
	7	-	90	0	0
DLBCL-NOS	1	-	95	95	95
	2	-	90	90	95
	3	-	90	90 (1+/C) ***	90 (1+/C) ***
	4	-	90	90 (1+/C) ***	90 (1+/C) ***
	5	-	90	90	90
	6	-	95	80	80
	7	-	90	70 (1+/C) ***	80 (1+/M) ***
	8	-	50	25	80

9	-	80	40 (1+/C) ***	50 (1+/C) ***
10	-	50	20 (1+/C) ***	50 (1+/C) ***
11	-	60	30 (1+/C) ***	20 (1+/M) ***
12	-	80	10	20
13	-	80	10	20
14	-	80	2	20
15	-	50	0	20
16	-	80	0	20 (1+/M) ***
17	-	90	0	10
18	-	90	0	10
19	-	90	0	10
20	-	90	0	10
21	-	90	0	10
22	-	95	2	5
23	-	90	0	5
24	-	80	0	5
25	-	90	0	5
26	-	95	0	5
27	-	90	0	5
28	-	90	0	5
29	-	95	0	5
30	-	95	0	5
31	-	95	0	5
32	-	95	0	5
33	-	80	0	5
34	-	90	0	5
35	-	95	0	5
36	-	90	0	5
37	-	90	0	5
38	-	90	0	5
39	-	90	0	5
40	-	95	0	5
41	-	90	0	5
42	-	95	0	5
43	-	90	0	5
44	-	90	0	5
45	-	90	0	5
46	-	90	0	5
47	-	90	0	2
48	-	90	0	2
49	-	95	0	0
50	-	95	0	0
51	-	80	0	0
52	-	80	0	0
53	-	90	0	0
54	-	95	0	0
55	-	90	0	0
56	-	95	0	0
57	-	90	0	0
58	-	90	0	0

	59	-	90	0	0
	60	-	95	0	0
	61	-	90	0	0
	62	-	90	0	0
	63	-	90	0	0
	64	-	90	0	0
	65	-	90	0	0
	66	-	95	0	0
PBL	1	+	90	90	90
	2	+	90	60	60
	3	+	80	40	60
	4	nd	90	30	30
	5	+/HHV8+	60	0	5
	6	+	90	0	5
	7	+	90	0	2
	8	-	90	0	0
	9	+	60	0	0
PEL	1	-/HHV8+	80	90	80
	2	-/HHV8+	50	20	70
	3	-/HHV8+	90	60 (1+/C) ***	60
	4	-/HHV8+	50	0	0
ENKTCL	1	+	90	90	90
	2	+	90	80	90
	3	+	50	70 (2+/C) ***	80
	4	+	60	40	80
	5	nd	80	50	60
	6	nd	90	0	2
EBV+ BL	1	+	90	0	5
	2	+	90	0	5
	3	+	90	0	5
	4	+	90	2	2
	5	+	90	0	2
	6	+	90	0	2
	7	+	95	0	2

* $\geq 2+$ membranous staining; ** $\geq 2+$ membranous and/or cytoplasmic staining; *** scored as negative; DLBCL - diffuse large B-cell lymphoma; PTLD - posttransplant lymphoproliferative disorder; NOS - not otherwise specified; PBL - plasmablastic lymphoma; PEL - primary effusion lymphoma; ENKTCL - extranodal NK/T-cell lymphoma; BL - Burkitt lymphoma; nd - not determined; M - membranous; C - cytoplasmic; gray shading denotes cases scored as negative in either malignant cells and/or total cellularity.

Supplemental Table 3. Correlative Expression of PD-L1 by Malignant Cells and the Cellular Microenvironment of Examined Tumor Types

Diagnosis	PD-L1 Expression			
	Malignant cells : Total cellularity			
	+/+	+/-	-/+	-/-
Classical Hodgkin lymphoma (CHL)	29	4	2	3
Nodular sclerosis CHL	17	4	2	2
Mixed cellularity CHL	7			1
CHL-not otherwise specified (NOS)	5			
Nodular lymphocyte predominant Hodgkin lymphoma		2	1	12
Primary mediastinal large B-cell lymphoma	14	1	5	1
T-cell/Histiocyte-rich large B-cell lymphoma	10		1	
EBV+ diffuse large B-cell lymphoma (DLBCL)	16			
EBV+ DLBCL of elderly	9			
EBV+ immunodeficiency associated DLBCL	7			
EBV+ posttransplant lymphoproliferative disorder (PTLD)	6		1	3
EBV-negative PTLD	4			3
DLBCL-NOS	7		2	57
EBV+ Plasmablastic lymphoma	4			5
HHV8+ Primary effusion lymphoma	2		1	1
EBV+ Extranodal NK/T-cell lymphoma	4		1	1
EBV+ Burkitt lymphoma				7