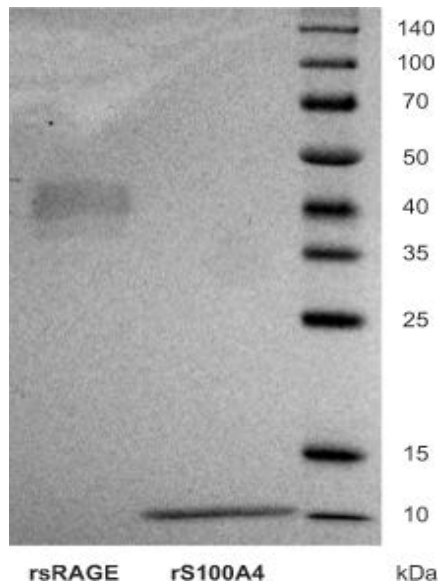


RAGE mediates S100A4-induced cell motility via MAPK/ERK and hypoxia signaling and is a prognostic biomarker for human colorectal cancer metastasis

Supplementary Material



Supplementary figure: SDS-PAGE and Coomassie staining of purified rsRAGE (3 μ g; lane 1) and rS100A4 (5 μ g; lane 2).