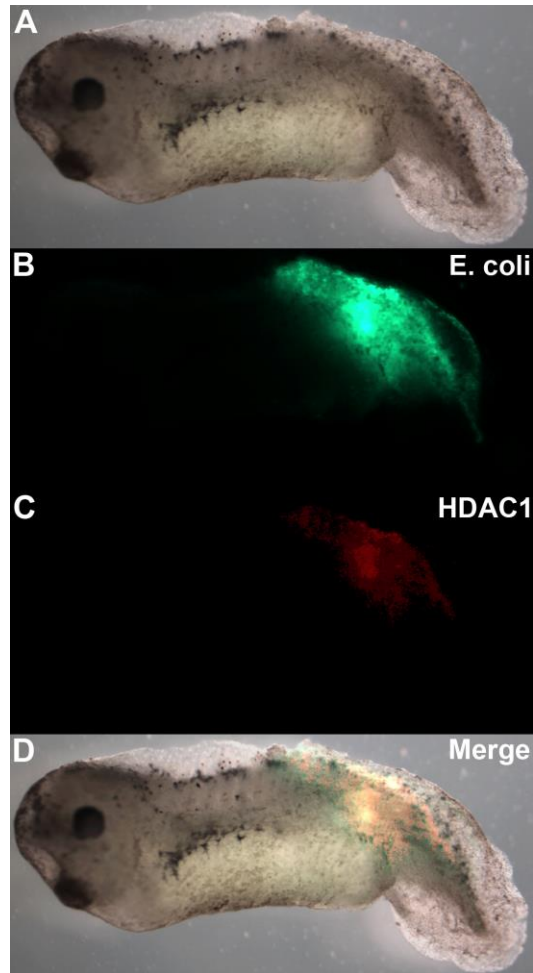


# Transmembrane voltage potential of somatic cells controls oncogene-mediated tumorigenesis at long-range

## SUPPLEMENTAL MATERIAL



**Supplemental figure 1:** *E. coli* preferentially colonize DN-HDAC1 expressing cells.

(A) Brightfield image of DN-HDAC1/lineage tracer injected (into 1 cell of 16 cell stage) embryo, which is also infected with GFP-expressing *E. coli* at stage 12.

(B) *E. coli* colonizes region of the tail marked by GFP expression.

(C) The same region colonized by *E. coli* is also the site of DN-HDAC1 expression, which is represented by the red lineage tracer.

(D) Merged photo of B & C shows that site of HDAC1 expression matches the site of *E. coli* colonization.