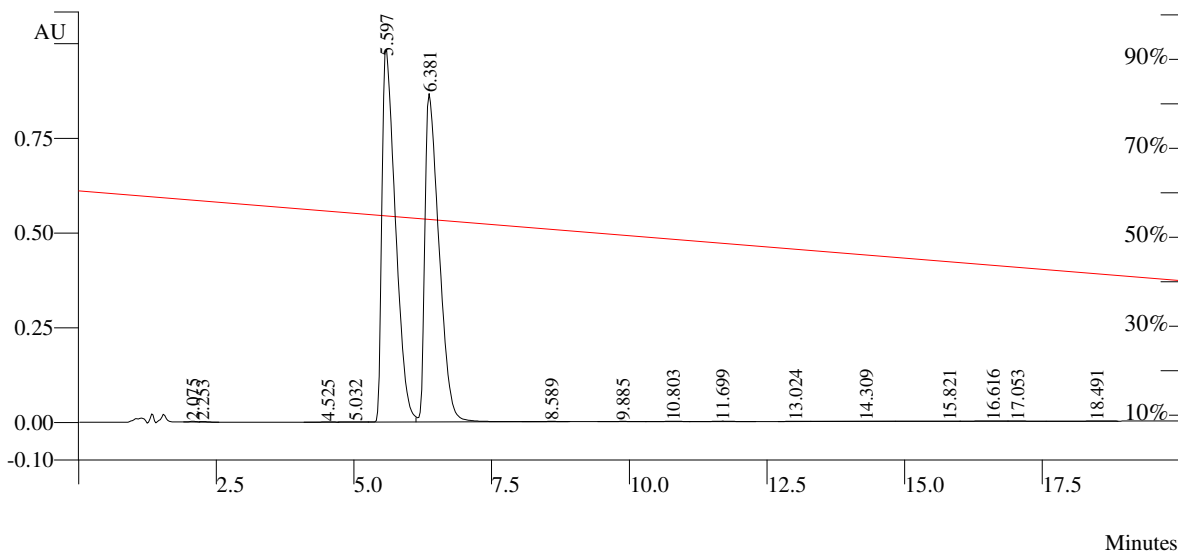


Method Notes

XTerra MS C-18, 5um, 3.9x150 mm column
40-60% Acetonitrile with 0.1% TFA- Water with 0.1% TFA
1 ml/min

Compound
Detection

2-PCCA (1)
254 nm

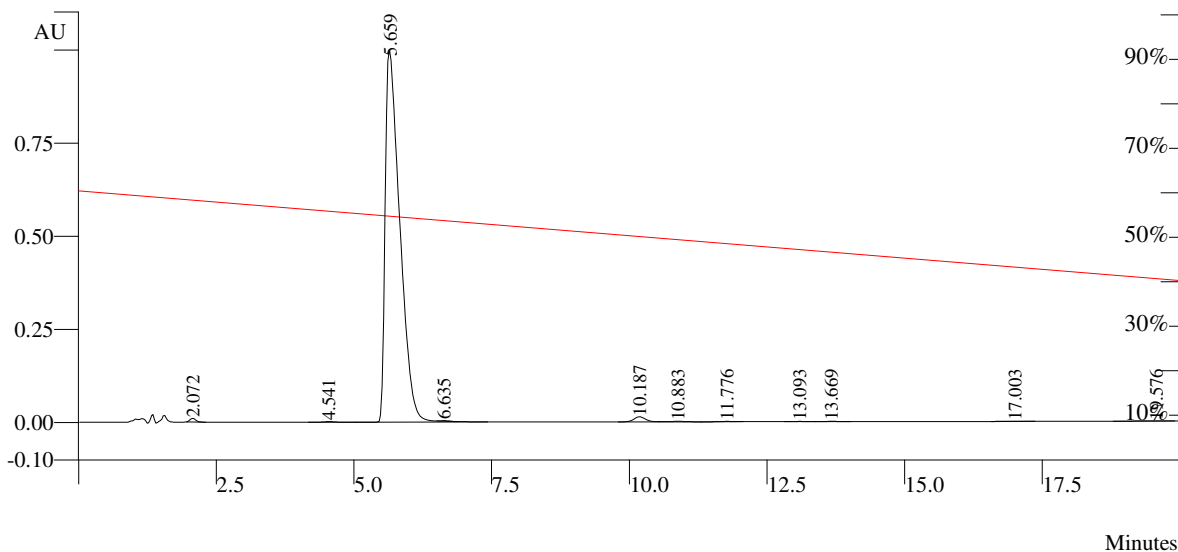


Peak No	Result (%)	Ret Time (min)	Rel Ret Time	Sep. Code	Width 1/2 (sec)	Peak Area (counts)	Peak Height (counts)
1	0.0617	2.075	0.00	BV	7.4	102800	12327
2	0.0427	2.253	0.00	VB	9.0	71213	8084
3	0.0293	4.525	0.00	BV	16.6	48858	3323
4	0.0415	5.032	0.00	VV	29.4	69242	3484
5	51.6527	5.597	0.00	VV	16.0	86115488	5040385
6	47.6916	6.381	0.00	VB	16.8	79511512	4442367
7	0.0354	8.589	0.00	TS	0.0	59027	4755
8	0.0373	9.885	0.00	BV	17.0	62140	3573
9	0.0667	10.803	0.00	VV	16.5	111153	6119
10	0.0725	11.699	0.00	VB	20.3	120871	5635
11	0.0271	13.024	0.00	BV	14.6	45183	2991
12	0.0588	14.309	0.00	VP	32.2	98027	2654
13	0.0153	15.821	0.00	PV	28.8	25490	1713
14	0.0927	16.616	0.00	VV	58.9	154524	4333
15	0.0418	17.053	0.00	VP	72.3	69737	3632
16	0.0329	18.491	0.00	PB	0.0	54789	2961
100.0000						166720048	9548336

Method Notes

XTerra MS C-18, 5um, 3.9x150 mm column
40-60% Acetonitrile with 0.1% TFA- Water with 0.1% TFA
1 ml/min

Compound **2**
Detection 254 nm



Peak No	Result (%)	Ret Time (min)	Rel Ret Time	Sep. Code	Width 1/2 (sec)	Peak Area (counts)	Peak Height (counts)
1	0.3824	2.072	0.00	BB	7.0	369218	50489
2	0.1317	4.541	0.00	BP	12.8	127135	9354
3	97.9145	5.659	0.00	PB	17.3	94542536	5128884
4	0.0857	6.635	0.00	TS	0.0	82773	7429
5	1.0440	10.187	0.00	BV	13.8	1008000	67903
6	0.1293	10.883	0.00	VP	15.7	124837	6965
7	0.0583	11.776	0.00	PB	17.3	56280	4376
8	0.0472	13.093	0.00	BV	14.6	45532	3106
9	0.0566	13.669	0.00	VB	15.5	54692	3604
10	0.0523	17.003	0.00	BB	16.6	50458	3167
11	0.0981	19.576	0.00	BB	0.0	94766	2997
100.0001						96556232	5288274

Method Notes

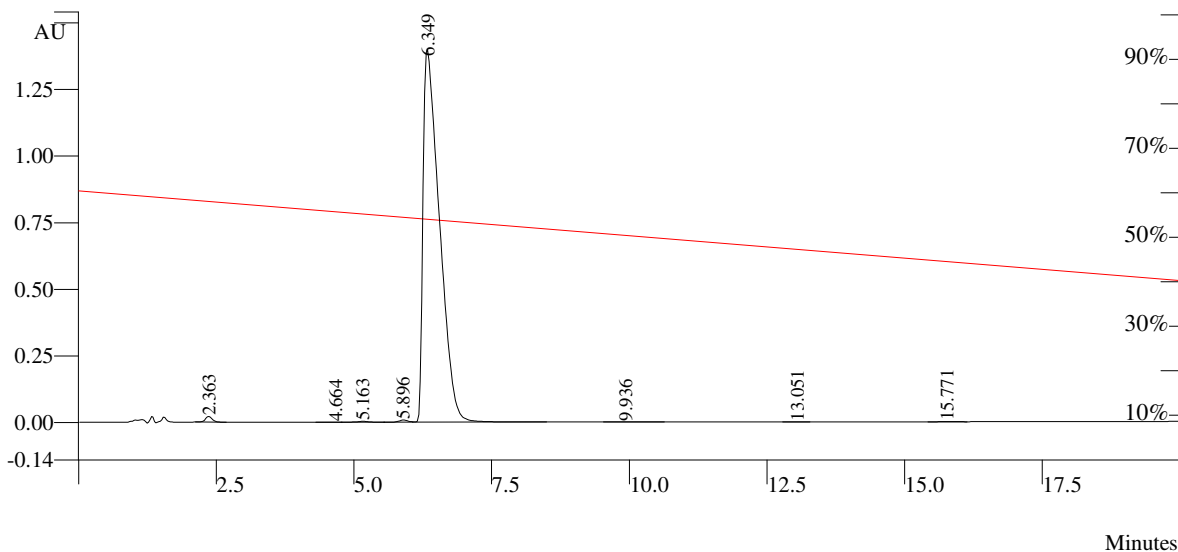
XTerra MS C-18, 5um, 3.9x150 mm column
40-60% Acetonitrile with 0.1% TFA- Water with 0.1% TFA
1 ml/min

Compound

3

Detection

254 nm



Peak No	Result (%)	Ret Time (min)	Rel Ret Time	Sep. Code	Width 1/2 (sec)	Peak Area (counts)	Peak Height (counts)
1	0.6358	2.363	0.00	BB	7.7	954003	110507
2	0.0148	4.664	0.00	BV	13.1	22184	1949
3	0.1708	5.163	0.00	VV	12.3	256367	17475
4	0.3034	5.896	0.00	VV	11.0	455201	39859
5	98.7764	6.349	0.00	VB	19.5	148220960	7168003
6	0.0557	9.936	0.00	BB	17.8	83517	4148
7	0.0139	13.051	0.00	BB	15.2	20904	1578
8	0.0292	15.771	0.00	BB	15.5	43863	2838
	100.0000					150057008	7346357

Method Notes

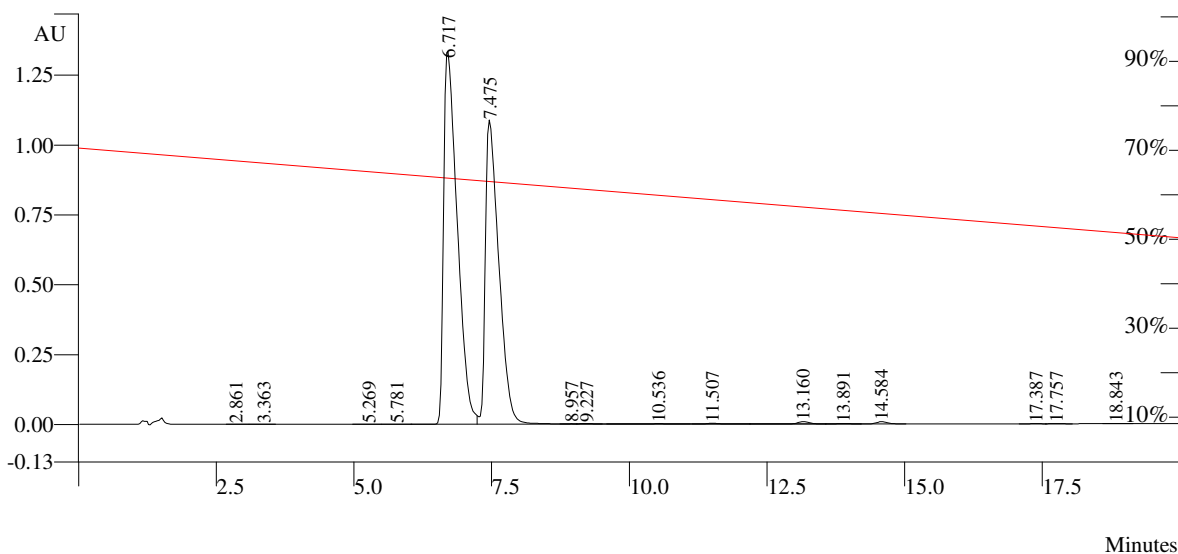
XTerra MS C-18, 5um, 3.9x150 mm column
30-50% Acetonitrile with 0.1% TFA- Water with 0.1% TFA
1 ml/min

Compound

4a

Detection

254 nm



Minutes

Peak No	Result (%)	Ret Time (min)	Rel Ret Time	Sep. Code	Width 1/2 (sec)	Peak Area (counts)	Peak Height (counts)
1	0.0056	2.861	0.00	BP	12.2	12097	1073
2	0.0051	3.363	0.00	PB	0.0	10995	960
3	0.0075	5.269	0.00	BP	11.5	16181	1478
4	0.0096	5.781	0.00	PV	16.3	20615	1564
5	54.7631	6.717	0.00	VV	16.2	117690464	6832873
6	44.3492	7.475	0.00	VP	15.8	95310032	5574384
7	0.0149	8.957	0.00	TF	0.0	31921	3074
8	0.0545	9.227	0.00	TF	0.0	117062	9107
9	0.0464	10.536	0.00	TS	0.0	99811	7874
10	0.0921	11.507	0.00	TF	0.0	198002	13038
11	0.2922	13.160	0.00	TF	0.0	628011	43463
12	0.0585	13.891	0.00	TF	0.0	125764	8650
13	0.2543	14.584	0.00	PB	0.0	546470	41334
14	0.0174	17.387	0.00	BV	14.9	37482	2861
15	0.0181	17.757	0.00	VB	20.2	38895	2557
16	0.0114	18.843	0.00	BB	14.1	24489	1725
	99.9999					214908288	12546015

Method Notes

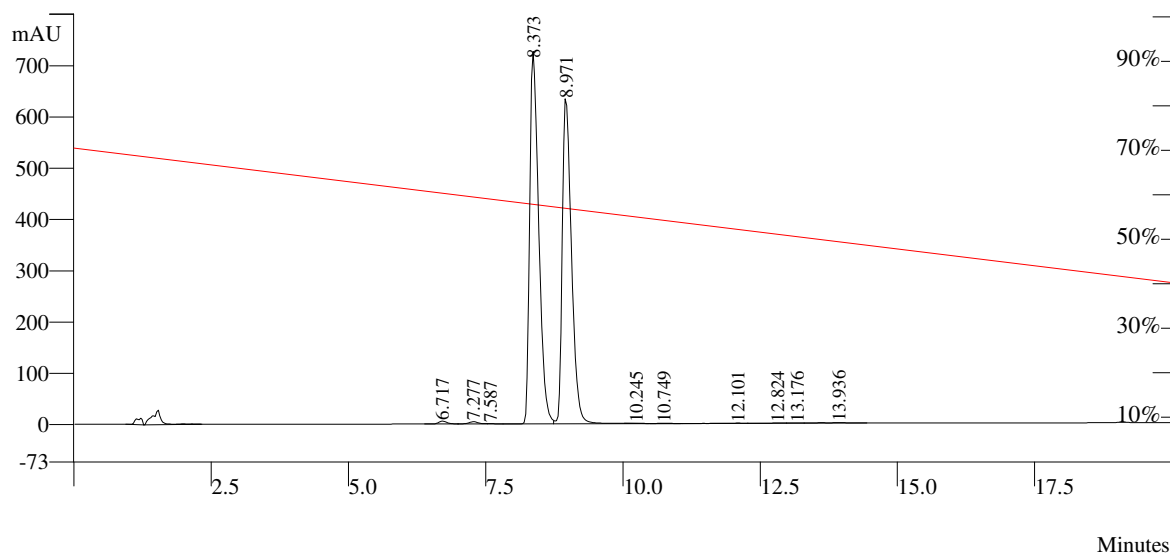
XTerra MS C-18, 5um, 3.9x150 mm column
30-60% Acetonitrile with 0.1% TFA- Water with 0.1% TFA
1 ml/min

Compound

4b

Detection

254 nm



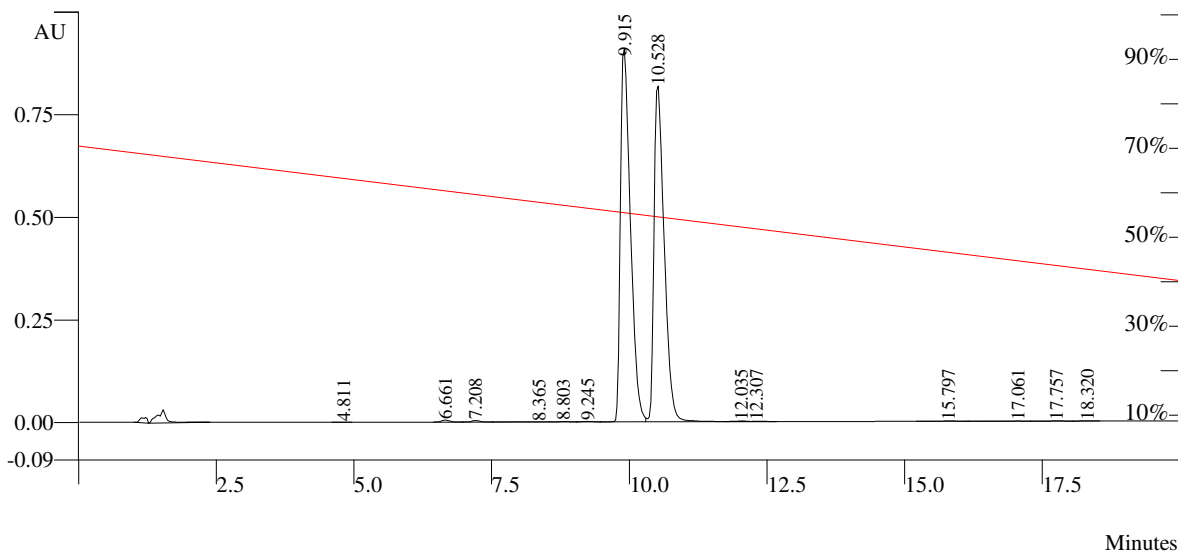
Peak No	Result (%)	Ret Time (min)	Rel Ret Time	Sep. Code	Width 1/2 (sec)	Peak Area (counts)	Peak Height (counts)
1	0.3688	6.717	0.00	BV	9.6	300588	29082
2	0.3142	7.277	0.00	VV	9.8	256043	23141
3	0.0205	7.587	0.00	VP	9.6	16745	1910
4	52.1697	8.373	0.00	PV	10.7	42515264	3721851
5	46.7194	8.971	0.00	VP	10.9	38073636	3246045
6	0.0369	10.245	0.00	TS	0.0	30058	2713
7	0.0325	10.749	0.00	TS	0.0	26507	2044
8	0.0254	12.101	0.00	PV	0.0	20687	2759
9	0.0627	12.824	0.00	VV	0.0	51095	3235
10	0.0567	13.176	0.00	VV	0.0	46204	3588
11	0.1932	13.936	0.00	VB	0.0	157426	3583
	100.0000					81494240	7039951

Method Notes

XTerra MS C-18, 5um, 3.9x150 mm column
30-60% Acetonitrile with 0.1% TFA- Water with 0.1% TFA
1 ml/min

Compound
Detection

4c
254 nm



Peak No	Result (%)	Ret Time (min)	Rel Ret Time	Sep. Code	Width 1/2 (sec)	Peak Area (counts)	Peak Height (counts)
1	0.0057	4.811	0.00	BB	0.0	6507	687
2	0.2204	6.661	0.00	BV	9.3	250811	24745
3	0.1699	7.208	0.00	VV	9.4	193299	19124
4	0.0137	8.365	0.00	VP	19.5	15570	1366
5	0.0446	8.803	0.00	PV	17.8	50786	4420
6	0.0488	9.245	0.00	VV	13.8	55495	5343
7	51.6434	9.915	0.00	VV	11.8	58761424	4650629
8	47.5653	10.528	0.00	VB	11.8	54121300	4193585
9	0.0781	12.035	0.00	TF	0.0	88863	7387
10	0.0245	12.307	0.00	TF	0.0	27849	1615
11	0.0857	15.797	0.00	BV	15.0	97559	5443
12	0.0544	17.061	0.00	VV	0.0	61851	1675
13	0.0299	17.757	0.00	VV	0.0	34063	1682
14	0.0156	18.320	0.00	VB	0.0	17763	1320
100.0000						113783136	8919021

Method Notes

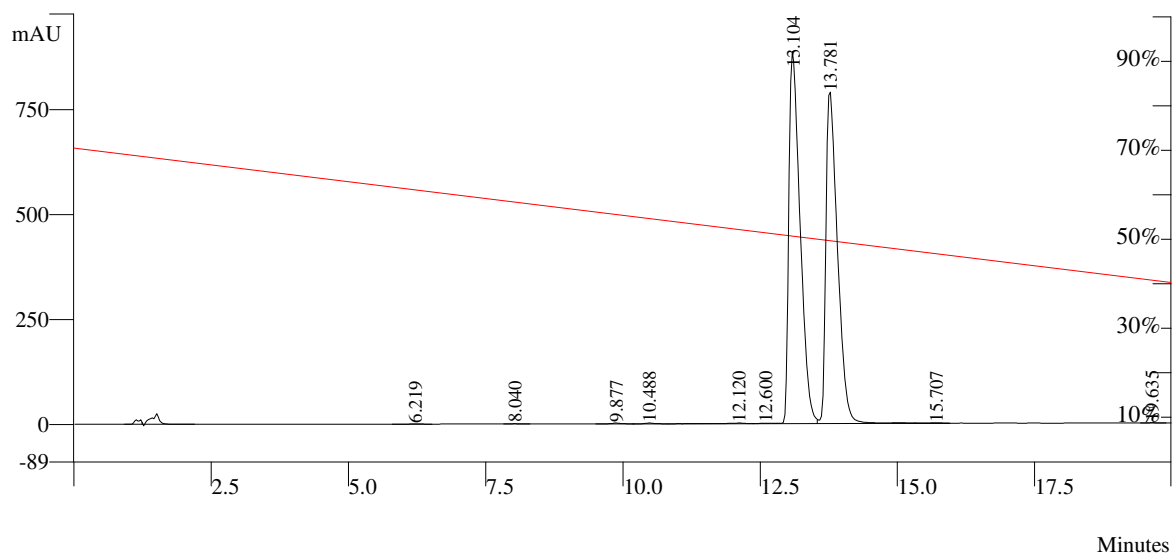
XTerra MS C-18, 5um, 3.9x150 mm column
30-60% Acetonitrile with 0.1% TFA- Water with 0.1% TFA
1 ml/min

Compound

4d

Detection

254 nm



Peak No	Result (%)	Ret Time (min)	Rel Ret Time	Sep. Code	Width 1/2 (sec)	Peak Area (counts)	Peak Height (counts)
1	0.0212	6.219	0.00	BB	14.7	26374	1995
2	0.0266	8.040	0.00	BB	10.9	33030	3052
3	0.0844	9.877	0.00	BV	10.2	104947	9515
4	0.0746	10.488	0.00	VP	10.4	92777	8790
5	0.0847	12.120	0.00	PV	23.4	105332	6883
6	0.0583	12.600	0.00	VV	17.6	72556	5488
7	51.8248	13.104	0.00	VV	13.3	64454060	4540041
8	47.7843	13.781	0.00	VB	13.6	59428928	4040021
9	0.0184	15.707	0.00	TS	0.0	22831	3044
10	0.0228	19.635	0.00	BB	11.2	28295	2442
	100.0001					124369128	8621271

Method Notes

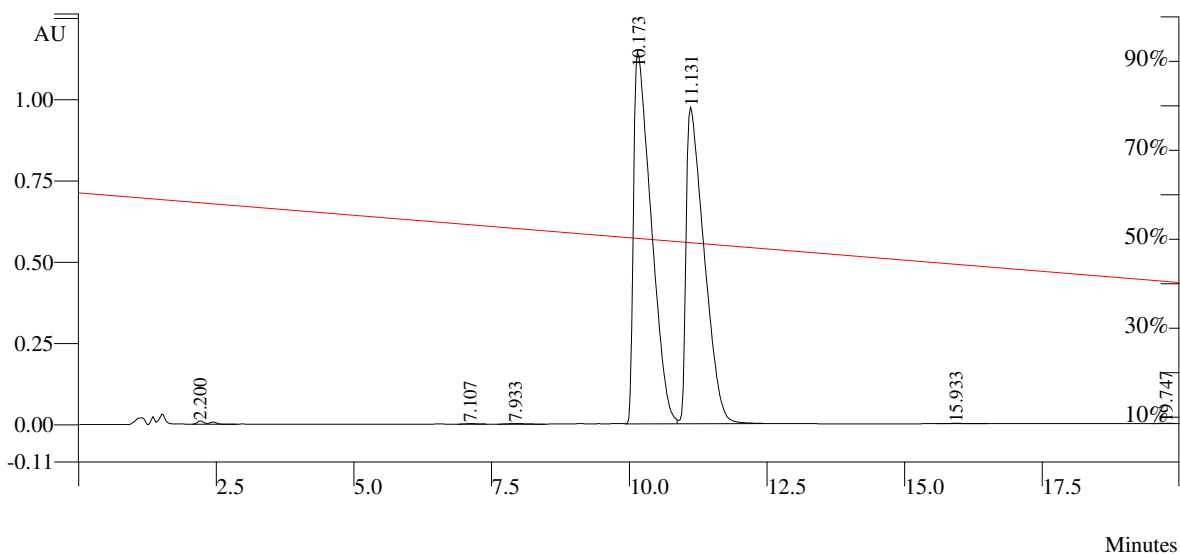
XTerra MS C-18, 5um, 3.9x150 mm column
40-60% Acetonitrile with 0.1% TFA- Water with 0.1% TFA
1 ml/min

Compound

4e

Detection

254 nm

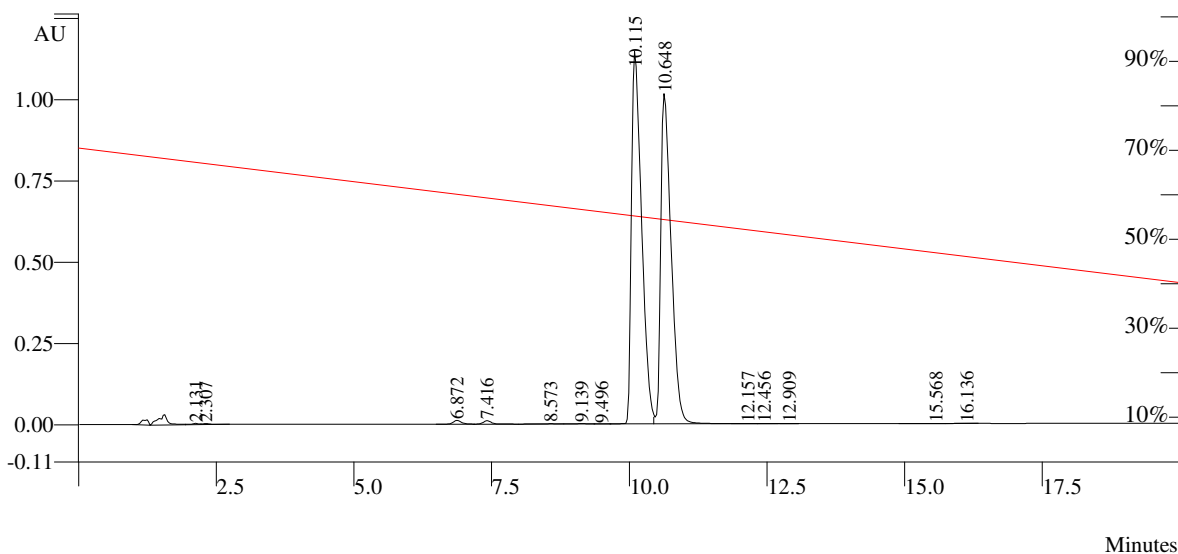


Peak No	Result (%)	Ret Time (min)	Rel Ret Time	Sep. Code	Width 1/2 (sec)	Peak Area (counts)	Peak Height (counts)
1	0.2816	2.200	0.00	BB	7.5	690213	50673
2	0.0454	7.107	0.00	BB	13.6	111358	7961
3	0.0765	7.933	0.00	BB	21.2	187414	8911
4	53.0973	10.173	0.00	BV	21.1	130160784	5872025
5	46.4307	11.131	0.00	VB	21.6	113818368	4995556
6	0.0529	15.933	0.00	BB	21.9	129601	5538
7	0.0157	19.747	0.00	BB	15.5	38433	2781
	100.0001					245136160	10943445

Method Notes

XTerra MS C-18, 5um, 3.9x150 mm column
30-60% Acetonitrile with 0.1% TFA- Water with 0.1% TFA
1 ml/min

Compound **4f**
Detection 254 nm

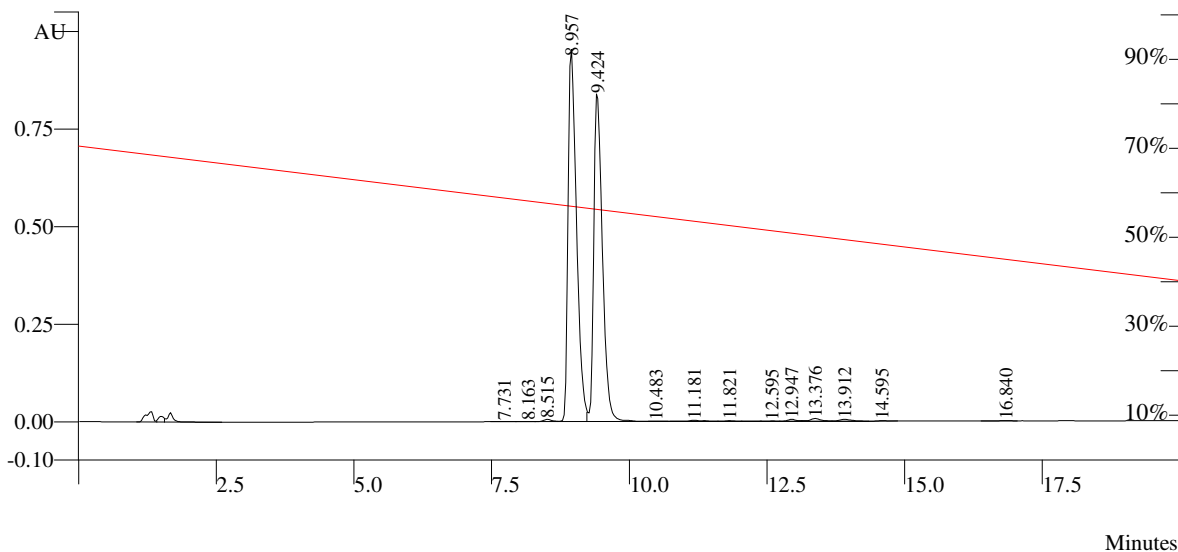


Peak No	Result (%)	Ret Time (min)	Rel Ret Time	Sep. Code	Width 1/2 (sec)	Peak Area (counts)	Peak Height (counts)
1	0.1448	2.131	0.00	VV	7.7	210849	20457
2	0.1307	2.307	0.00	VB	9.0	190351	17444
3	0.3995	6.872	0.00	BV	9.1	581566	58628
4	0.3667	7.416	0.00	VP	9.3	533835	52671
5	0.0411	8.573	0.00	PP	11.5	59784	5965
6	0.0524	9.139	0.00	PV	13.9	76301	6667
7	0.0163	9.496	0.00	VV	0.0	23717	2264
8	51.6030	10.115	0.00	VV	12.0	75129176	5876753
9	47.1527	10.648	0.00	VB	12.2	68650064	5206575
10	0.0345	12.157	0.00	TF	0.0	50256	3734
11	0.0184	12.456	0.00	TF	0.0	26741	2308
12	0.0044	12.909	0.00	TS	0.0	6442	696
13	0.0168	15.568	0.00	BP	18.9	24475	1167
14	0.0187	16.136	0.00	PB	0.0	27264	1230
	100.0000					145590832	11256559

Method Notes

XTerra MS C-18, 5um, 3.9x150 mm column
30-60% Acetonitrile with 0.1% TFA- Water with 0.1% TFA
1 ml/min

Compound **4g**
Detection **254 nm**



Peak No	Result (%)	Ret Time (min)	Rel Ret Time	Sep. Code	Width 1/2 (sec)	Peak Area (counts)	Peak Height (counts)
1	0.0296	7.731	0.00	BV	12.0	30186	2532
2	0.0352	8.163	0.00	VV	13.1	35964	3076
3	0.3168	8.515	0.00	VV	10.7	323383	28299
4	51.4618	8.957	0.00	VV	10.1	52537620	4887166
5	46.5940	9.424	0.00	VP	9.9	47568104	4301179
6	0.0213	10.483	0.00	TS	0.0	21796	2294
7	0.2199	11.181	0.00	TF	0.0	224545	14146
8	0.0689	11.821	0.00	TF	0.0	70293	7722
9	0.0505	12.595	0.00	TF	0.0	51545	2507
10	0.2583	12.947	0.00	TF	0.0	263718	25849
11	0.4733	13.376	0.00	TF	0.0	483228	36203
12	0.3663	13.912	0.00	TF	0.0	373962	25940
13	0.0764	14.595	0.00	PB	0.0	77965	7650
14	0.0277	16.840	0.00	BB	0.0	28291	1485
100.0000						102090600	9346048

Method Notes

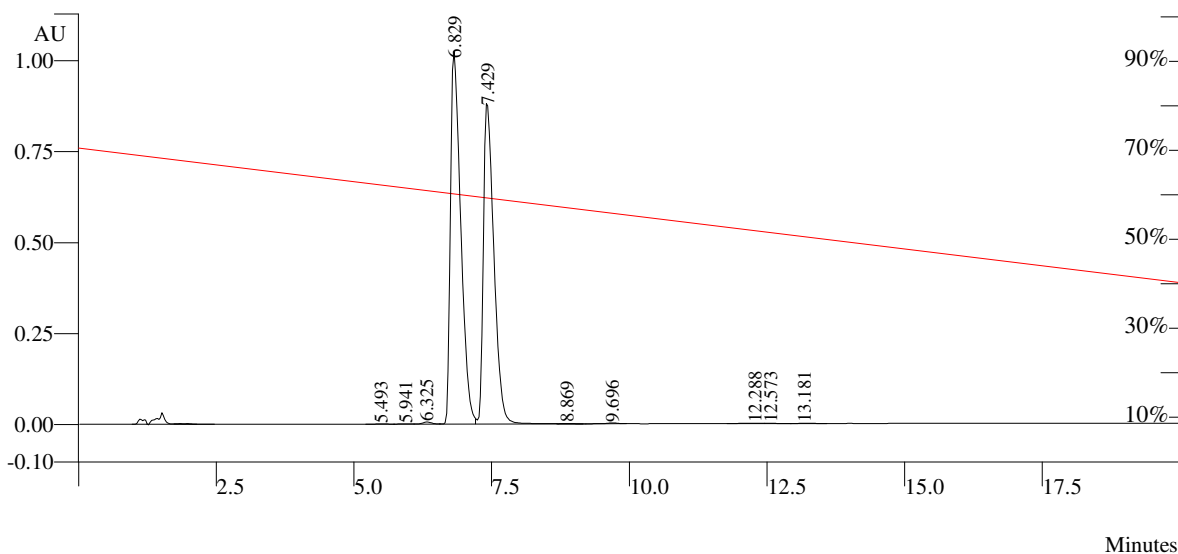
XTerra MS C-18, 5um, 3.9x150 mm column
30-60% Acetonitrile with 0.1% TFA- Water with 0.1% TFA
1 ml/min

Compound

4h

Detection

254 nm



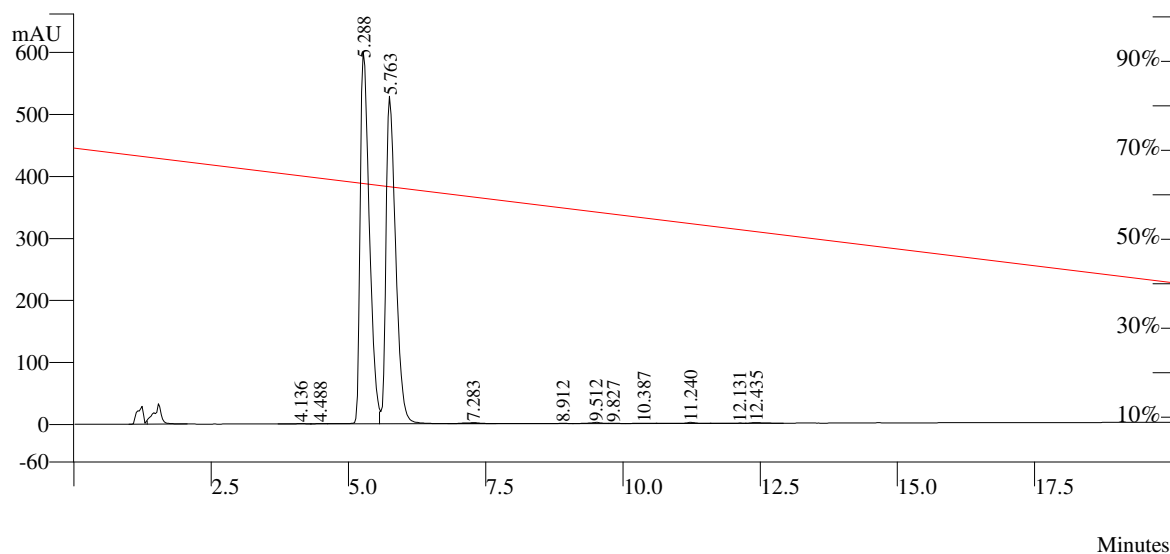
Peak No	Result (%)	Ret Time (min)	Rel Ret Time	Sep. Code	Width 1/2 (sec)	Peak Area (counts)	Peak Height (counts)
1	0.0305	5.493	0.00	BV	11.5	39459	3291
2	0.0284	5.941	0.00	VV	13.3	36801	3326
3	0.2453	6.325	0.00	VV	10.1	317349	29444
4	52.6871	6.829	0.00	VV	12.2	68157272	5246506
5	46.5998	7.429	0.00	VP	12.5	60282552	4480238
6	0.0257	8.869	0.00	TS	0.0	33258	3428
7	0.1374	9.696	0.00	PB	0.0	177749	12489
8	0.1278	12.288	0.00	BV	37.8	165279	6665
9	0.0569	12.573	0.00	VV	40.5	73569	5038
10	0.0611	13.181	0.00	VB	22.2	79067	4343
	100.0000					129362352	9794768

Method Notes

XTerra MS C-18, 5um, 3.9x150 mm column
30-60% Acetonitrile with 0.1% TFA- Water with 0.1% TFA
1 ml/min

Compound
Detection

4i
254 nm



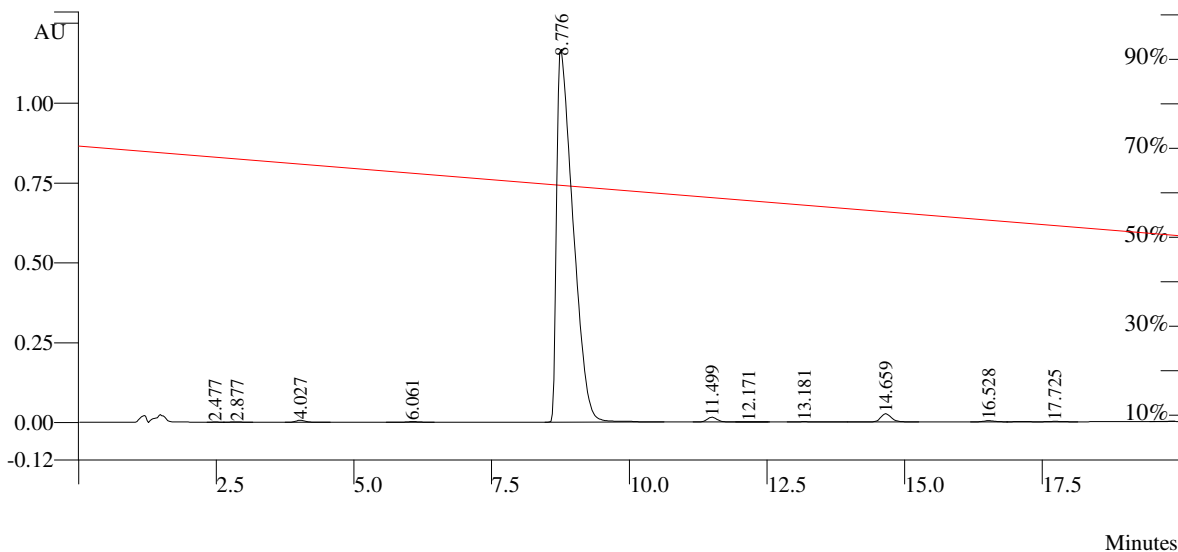
Peak No	Result (%)	Ret Time (min)	Rel Ret Time	Sep. Code	Width 1/2 (sec)	Peak Area (counts)	Peak Height (counts)
1	0.0585	4.136	0.00	BV	13.1	40806	2914
2	0.0493	4.488	0.00	VV	13.8	34370	2711
3	51.0487	5.288	0.00	VV	10.9	35620840	3076206
4	47.9881	5.763	0.00	VP	11.4	33485210	2706122
5	0.2469	7.283	0.00	TS	0.0	172315	9025
6	0.0548	8.912	0.00	PV	0.0	38242	2497
7	0.2011	9.512	0.00	VV	0.0	140343	9221
8	0.0290	9.827	0.00	VP	0.0	20269	2074
9	0.0414	10.387	0.00	PV	0.0	28880	2072
10	0.1378	11.240	0.00	VV	0.0	96163	8028
11	0.0236	12.131	0.00	VV	0.0	16436	1459
12	0.1207	12.435	0.00	VB	0.0	84228	6069
	99.9999					69778096	5828398

Method Notes

XTerra MS C-18, 5um, 3.9x150 mm column
30-50% Acetonitrile with 0.1% TFA- Water with 0.1% TFA
1 ml/min

Compound
Detection

5a
254 nm



Peak No	Result (%)	Ret Time (min)	Rel Ret Time	Sep. Code	Width 1/2 (sec)	Peak Area (counts)	Peak Height (counts)
1	0.0324	2.477	0.00	BV	8.0	41295	4736
2	0.0708	2.877	0.00	VB	12.0	90276	6638
3	0.3228	4.027	0.00	BB	11.5	411635	32450
4	0.1149	6.061	0.00	BB	12.0	146513	11084
5	96.9702	8.776	0.00	BB	19.4	123637368	5979178
6	0.7432	11.499	0.00	BB	11.4	947639	75634
7	0.0261	12.171	0.00	TS	0.0	33246	2758
8	0.0492	13.181	0.00	BP	15.2	62749	3675
9	1.3657	14.659	0.00	PB	12.2	1741210	131196
10	0.2005	16.528	0.00	BV	13.0	255669	18602
11	0.1041	17.725	0.00	VB	14.1	132743	6874
	99.9999					127500352	6272825

Method Notes

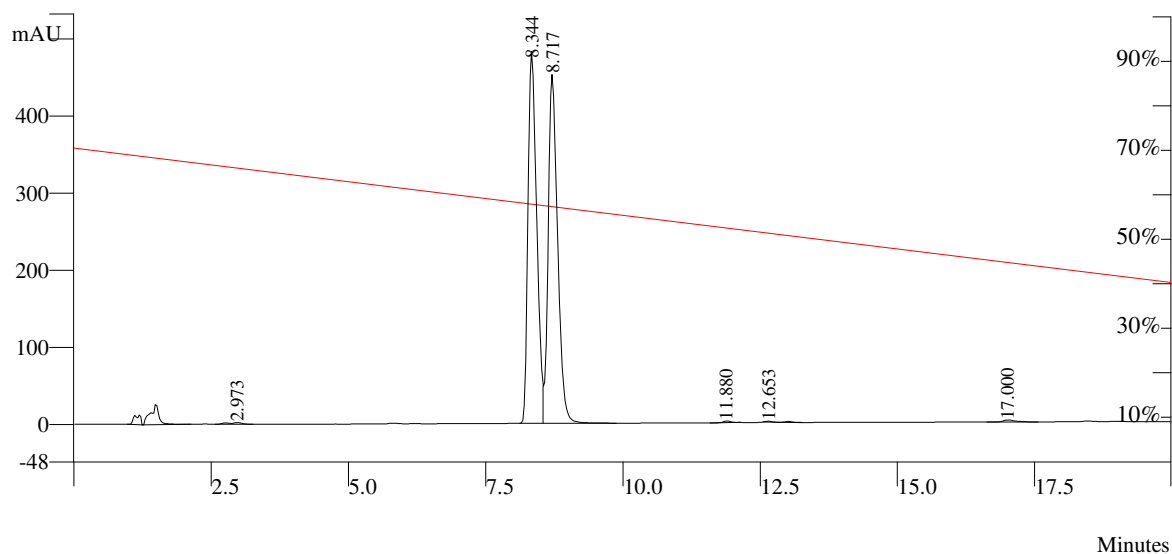
XTerra MS C-18, 5um, 3.9x150 mm column
30-60% Acetonitrile with 0.1% TFA- Water with 0.1% TFA
1 ml/min

Compound

5b

Detection

254 nm



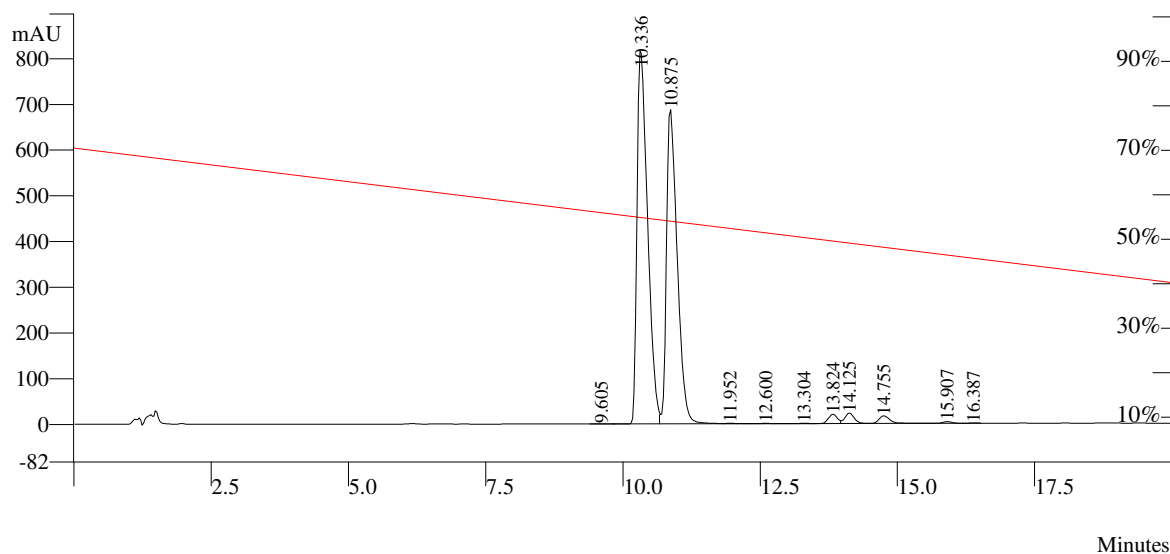
Peak No	Result (%)	Ret Time (min)	Rel Ret Time	Sep. Code	Width 1/2 (sec)	Peak Area (counts)	Peak Height (counts)
1	0.3787	2.973	0.00	BB	10.8	209751	11615
2	48.7562	8.344	0.00	BV	10.4	27005478	2471731
3	50.1153	8.717	0.00	VB	10.9	27758250	2317353
4	0.1851	11.880	0.00	BB	9.9	102531	11084
5	0.1805	12.653	0.00	BB	7.5	99989	6473
6	0.3842	17.000	0.00	BB	13.9	212826	13554
	100.0000					55388824	4831810

Method Notes

XTerra MS C-18, 5um, 3.9x150 mm column
30-60% Acetonitrile with 0.1% TFA- Water with 0.1% TFA
1 ml/min

Compound
Detection

5c
254 nm



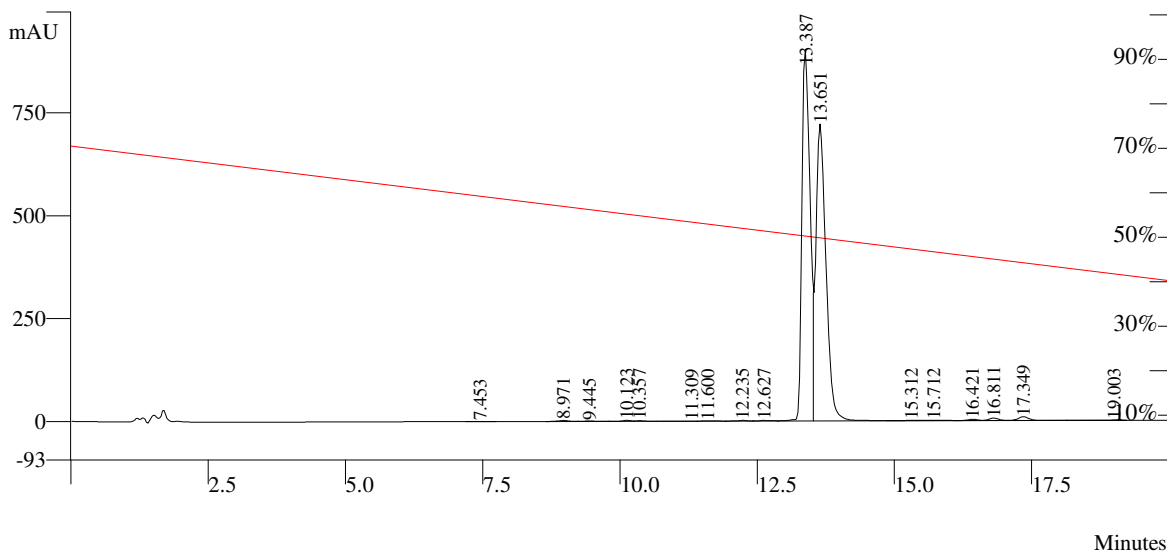
Peak No	Result (%)	Ret Time (min)	Rel Ret Time	Sep. Code	Width 1/2 (sec)	Peak Area (counts)	Peak Height (counts)
1	0.0159	9.605	0.00	BV	12.5	17229	1505
2	51.8005	10.336	0.00	VV	12.8	56072080	4150031
3	44.4002	10.875	0.00	VP	12.6	48061492	3518112
4	0.0210	11.952	0.00	TS	0.0	22713	2482
5	0.0297	12.600	0.00	TS	0.0	32184	2933
6	0.0329	13.304	0.00	TS	0.0	35611	3224
7	1.0876	13.824	0.00	PV	0.0	1177237	104383
8	1.2926	14.125	0.00	VV	0.0	1399164	117189
9	1.0863	14.755	0.00	VP	0.0	1175920	85950
10	0.1951	15.907	0.00	PP	0.0	211218	19738
11	0.0382	16.387	0.00	PB	0.0	41403	4307
	100.0000					108246248	8009854

Method Notes

XTerra MS C-18, 5um, 3.9x150 mm column
30-60% Acetonitrile with 0.1% TFA- Water with 0.1% TFA
1 ml/min

Compound
Detection

5d
254 nm



Minutes

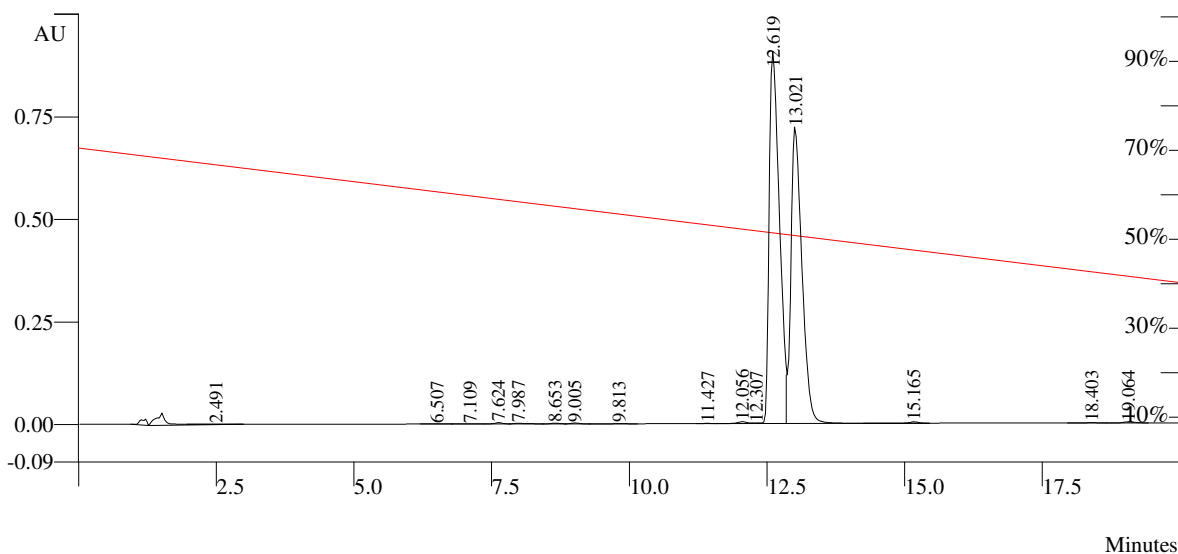
Peak No	Result (%)	Ret Time (min)	Rel Ret Time	Sep. Code	Width 1/2 (sec)	Peak Area (counts)	Peak Height (counts)
1	0.0198	7.453	0.00	BB	0.0	19234	1242
2	0.1619	8.971	0.00	BV	12.0	157615	12043
3	0.0753	9.445	0.00	VV	15.5	73263	4822
4	0.1397	10.123	0.00	VV	9.9	135994	14103
5	0.0824	10.357	0.00	VP	12.5	80153	8335
6	0.0081	11.309	0.00	PV	0.0	7837	1010
7	0.0541	11.600	0.00	VV	15.4	52658	4652
8	0.0887	12.235	0.00	VV	12.8	86370	8796
9	0.1271	12.627	0.00	VV	16.0	123734	8119
10	49.1666	13.387	0.00	VV	10.6	47851952	4621532
11	48.7128	13.651	0.00	VB	12.2	47410328	3693162
12	0.0538	15.312	0.00	TF	0.0	52358	4769
13	0.0553	15.712	0.00	TF	0.0	53859	3389
14	0.1879	16.421	0.00	TF	0.0	182894	15291
15	0.3694	16.811	0.00	TF	0.0	359477	30136
16	0.6563	17.349	0.00	TF	0.0	638759	46678
17	0.0407	19.003	0.00	TF	0.0	39636	3796
	99.9999					97326128	8481875

Method Notes

XTerra MS C-18, 5um, 3.9x150 mm column
30-60% Acetonitrile with 0.1% TFA- Water with 0.1% TFA
1 ml/min

Compound
Detection

5e
254 nm

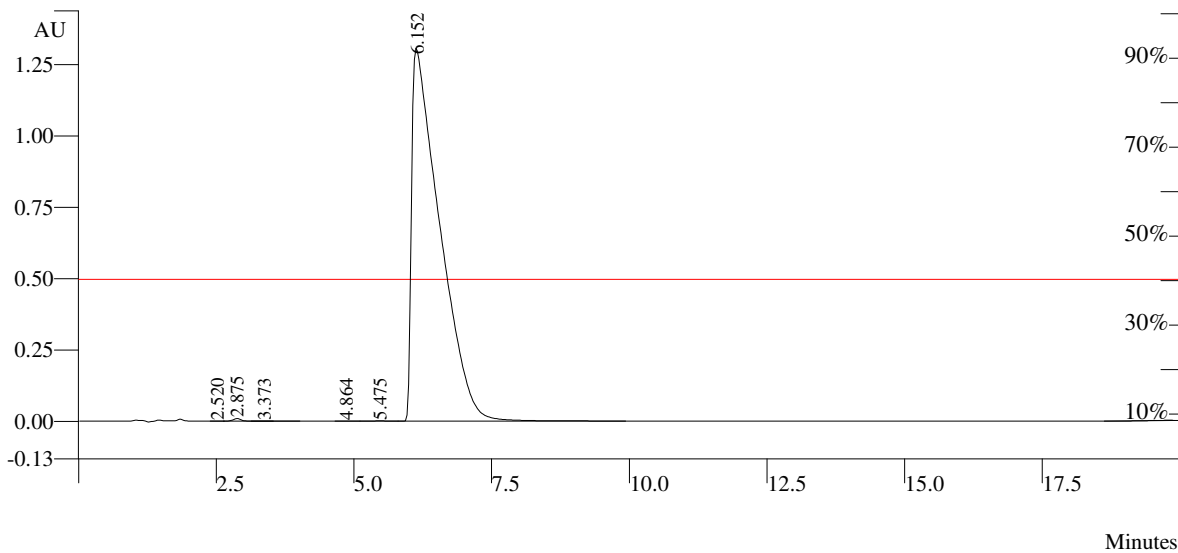


Peak No	Result (%)	Ret Time (min)	Rel Ret Time	Sep. Code	Width 1/2 (sec)	Peak Area (counts)	Peak Height (counts)
1	0.0268	2.491	0.00	TS	0.0	30274	2185
2	0.0328	6.507	0.00	BV	12.3	36998	2985
3	0.0232	7.109	0.00	VP	23.4	26105	1407
4	0.1446	7.624	0.00	PV	9.9	163103	16229
5	0.1226	7.987	0.00	VV	10.9	138259	10338
6	0.0824	8.653	0.00	VV	11.7	92870	8696
7	0.0963	9.005	0.00	VV	11.4	108626	10332
8	0.0315	9.813	0.00	VB	0.0	35486	2002
9	0.0276	11.427	0.00	BV	11.8	31083	2633
10	0.2611	12.056	0.00	VV	10.6	294379	23577
11	0.0496	12.307	0.00	VV	10.6	55978	8717
12	52.8397	12.619	0.00	VV	12.5	59583864	4648046
13	45.8883	13.021	0.00	VB	12.6	51745264	3702878
14	0.1831	15.165	0.00	TS	0.0	206496	17743
15	0.0410	18.403	0.00	BP	13.6	46235	2570
16	0.1494	19.064	0.00	PB	13.9	168522	11951
	100.0000					112763536	8472289

Method Notes

XTerra C18, 3.9 mm x 150 mm
60% Acetonitrile - 40% Water both with 0.1% TFA
1 ml/min

Compound **6a**
Detection 254 nm



Peak No	Result (%)	Ret Time (min)	Rel Ret Time	Sep. Code	Width 1/2 (sec)	Peak Area (counts)	Peak Height (counts)
1	0.0114	2.520	0.00	BV	7.8	27104	3335
2	0.2227	2.875	0.00	VB	8.6	529750	49136
3	0.0106	3.373	0.00	TS	0.0	25142	2053
4	0.0123	4.864	0.00	BP	11.5	29248	2365
5	0.0376	5.475	0.00	PP	12.6	89461	6419
6	99.7054	6.152	0.00	PB	33.0	237131952	6645061
	100.0000					237832656	6708369

Method Notes

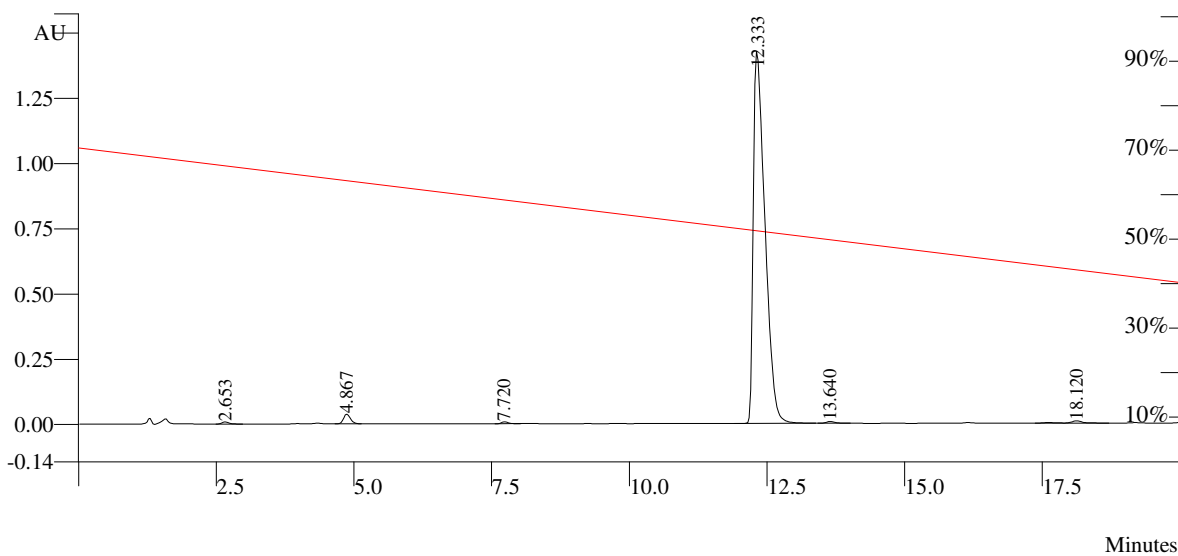
XTerra MS C-18, 5um, 3.9x150 mm column
30-60% Acetonitrile with 0.1% TFA- Water with 0.1% TFA
1 ml/min

Compound

6b

Detection

254 nm



Peak No	Result (%)	Ret Time (min)	Rel Ret Time	Sep. Code	Width 1/2 (sec)	Peak Area (counts)	Peak Height (counts)
1	0.3184	2.653	0.00	BB	7.5	352528	43044
2	1.5278	4.867	0.00	BB	8.2	1691690	191686
3	0.2480	7.720	0.00	BB	8.6	274561	33740
4	96.9297	12.333	0.00	BB	13.8	107325128	7309652
5	0.3327	13.640	0.00	BB	9.8	368346	33286
6	0.6434	18.120	0.00	BB	11.5	712412	42976
100.0000						110724656	7654384