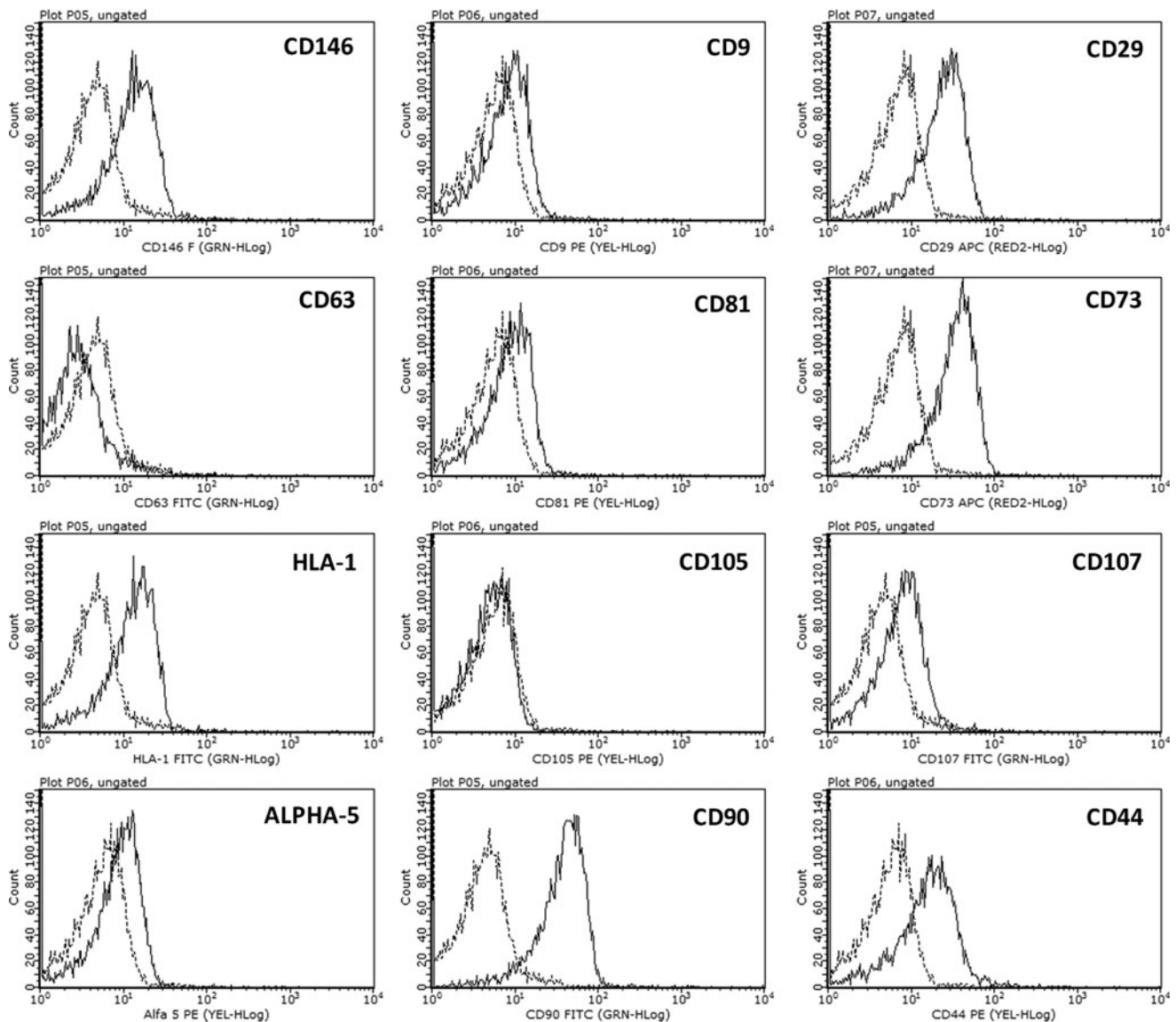


## Supplementary Data



**SUPPLEMENTARY FIG. S1.** Cytofluorimetric characterization of extracellular vesicles derived from mesenchymal stromal cells (MSC-EVs). Representative FACS analyses of MSC-EVs expressing the CD9, CD29, CD44, CD63, CD73, CD81, CD90, CD105, CD107, CD146, HLA + I, and alpha-V. *Dotted lines* indicate the isotypic controls. Four different EV preparations were analyzed with similar results. The statistical analysis between relevant antibodies and the isotypic control was significant ( $P < 0.001$ ). FACS, fluorescence activated cell sorting.