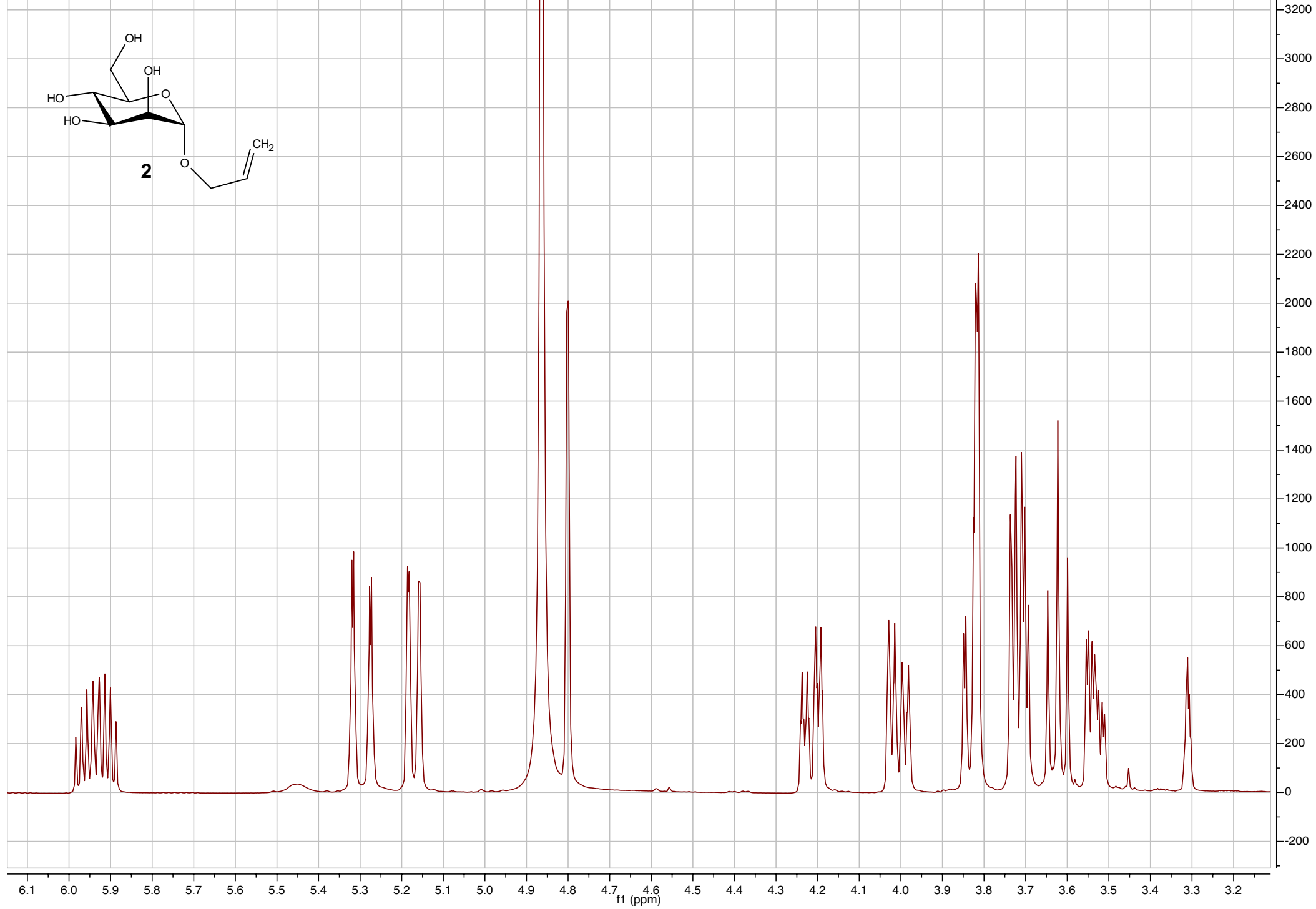
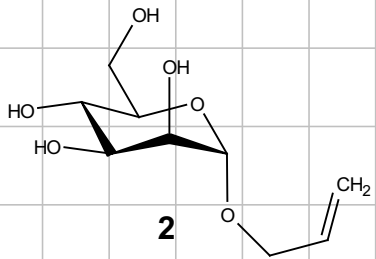
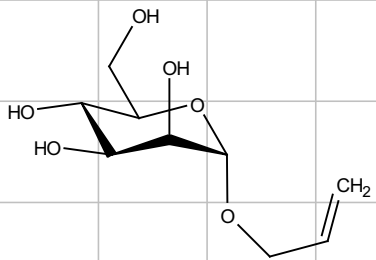


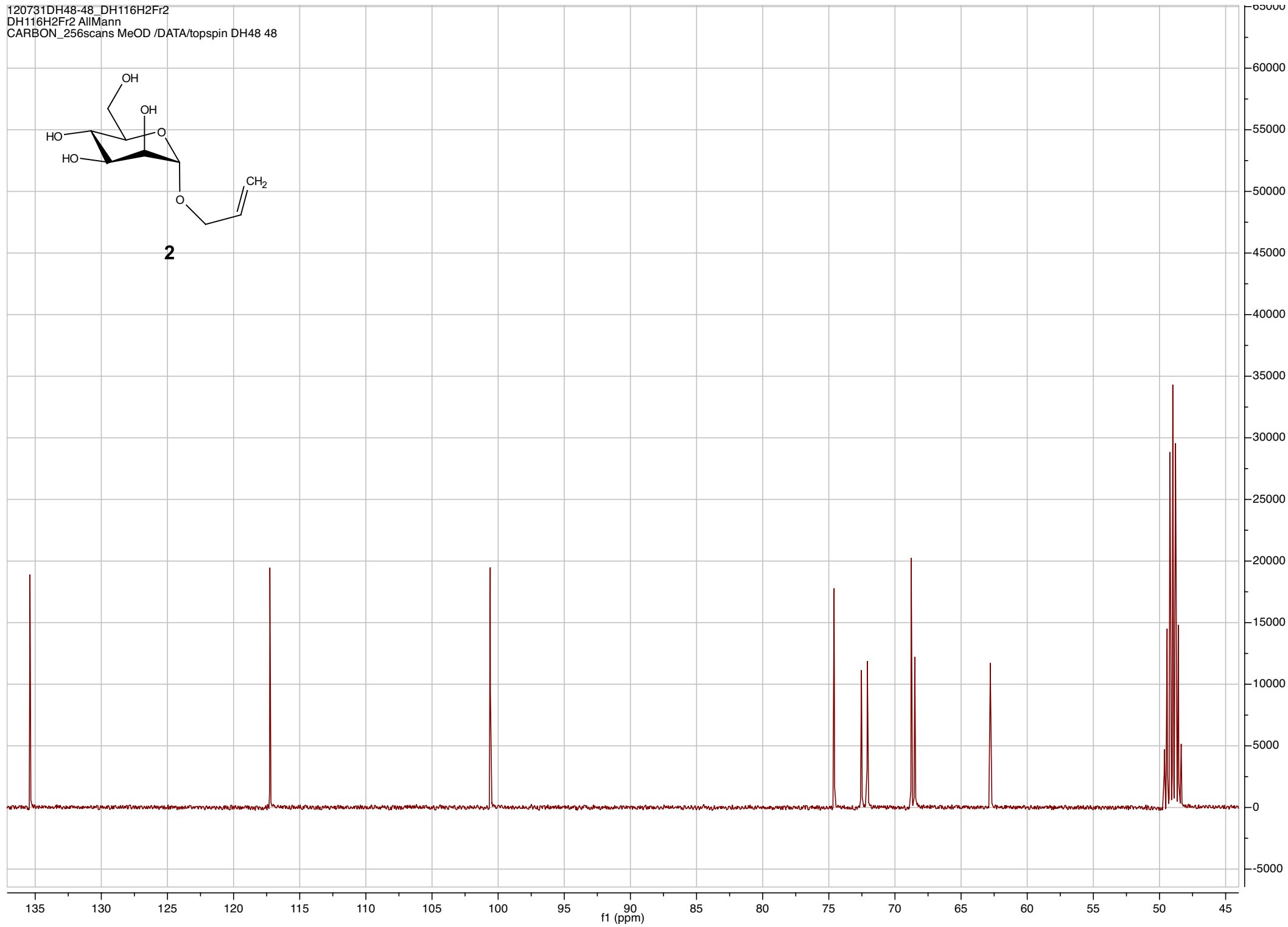
120731DH48-48_DH116H2Fr2
DH116H2Fr2 AllMann
PROTON_8scans MeOD /DATA/topspin DH48 48



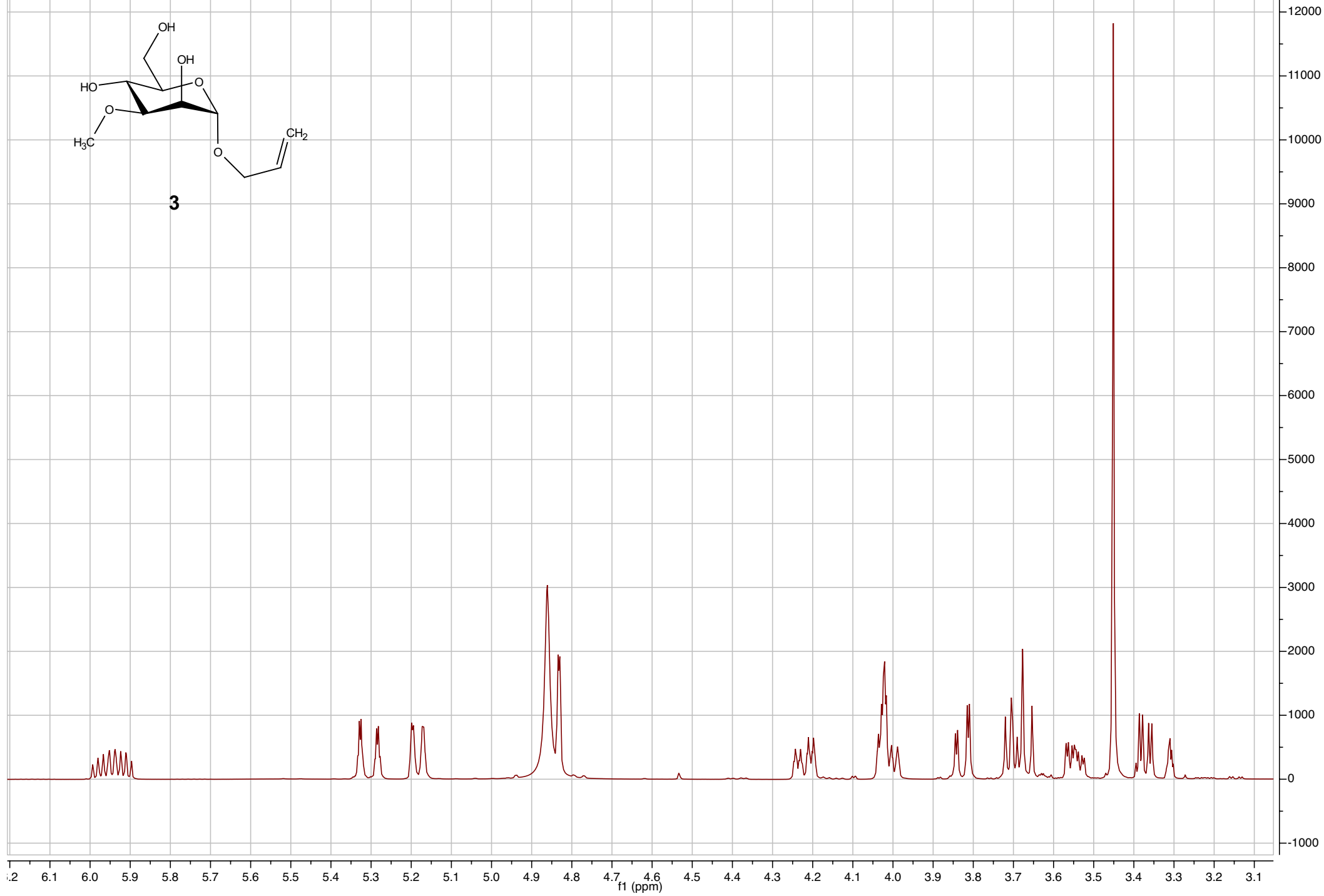
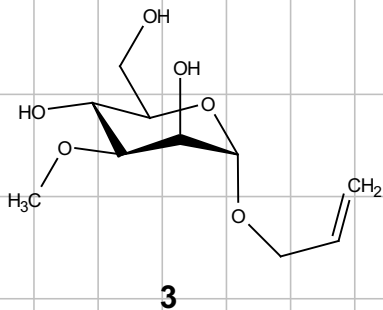
120731DH48-48_DH116H2Fr2
DH116H2Fr2 AllMann
CARBON_256scans MeOD /DATA/topspin DH48 48



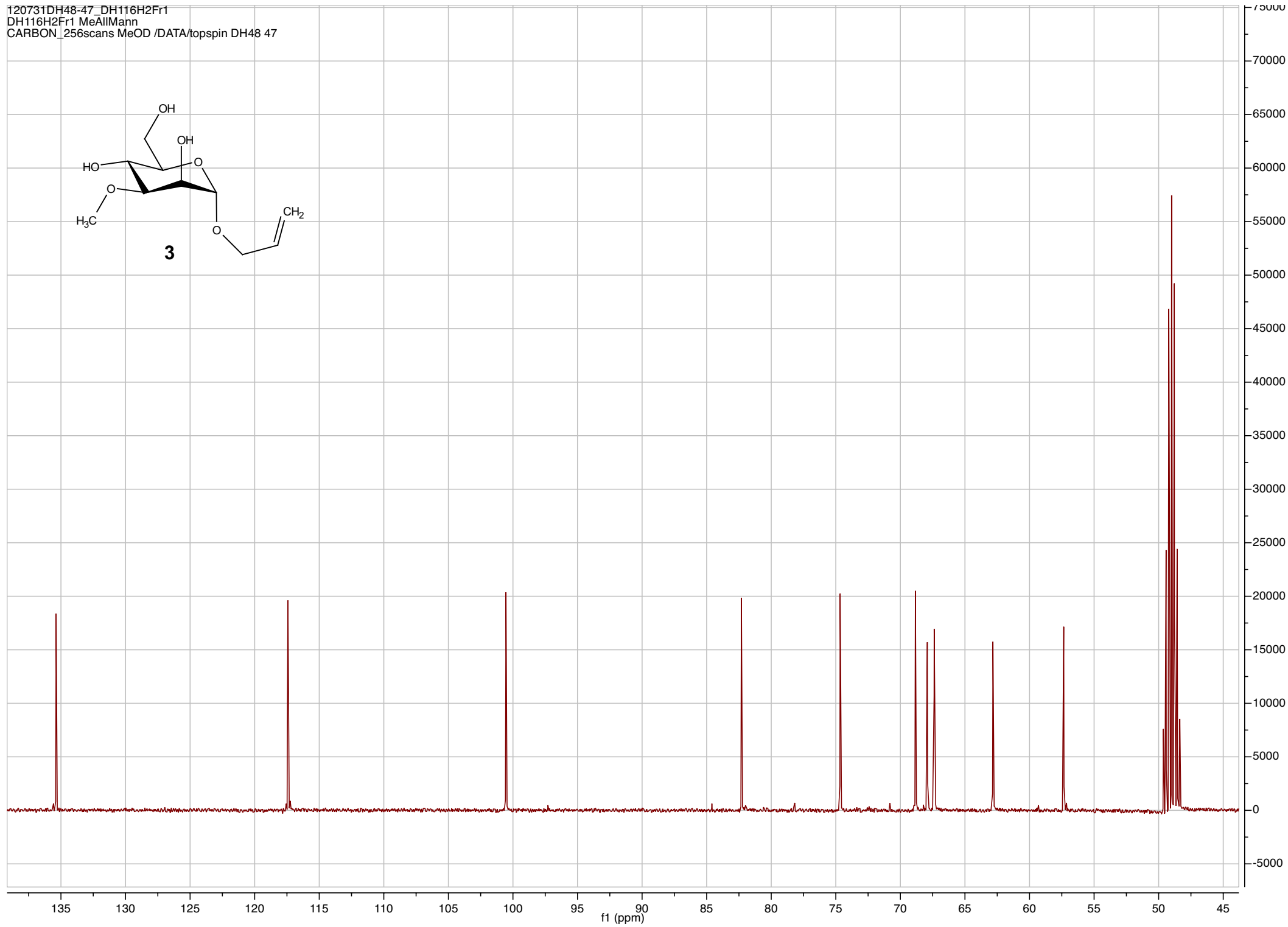
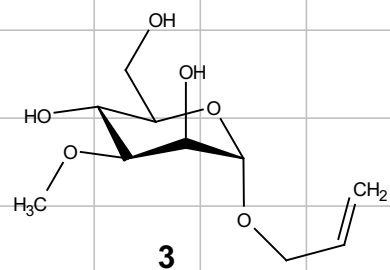
2



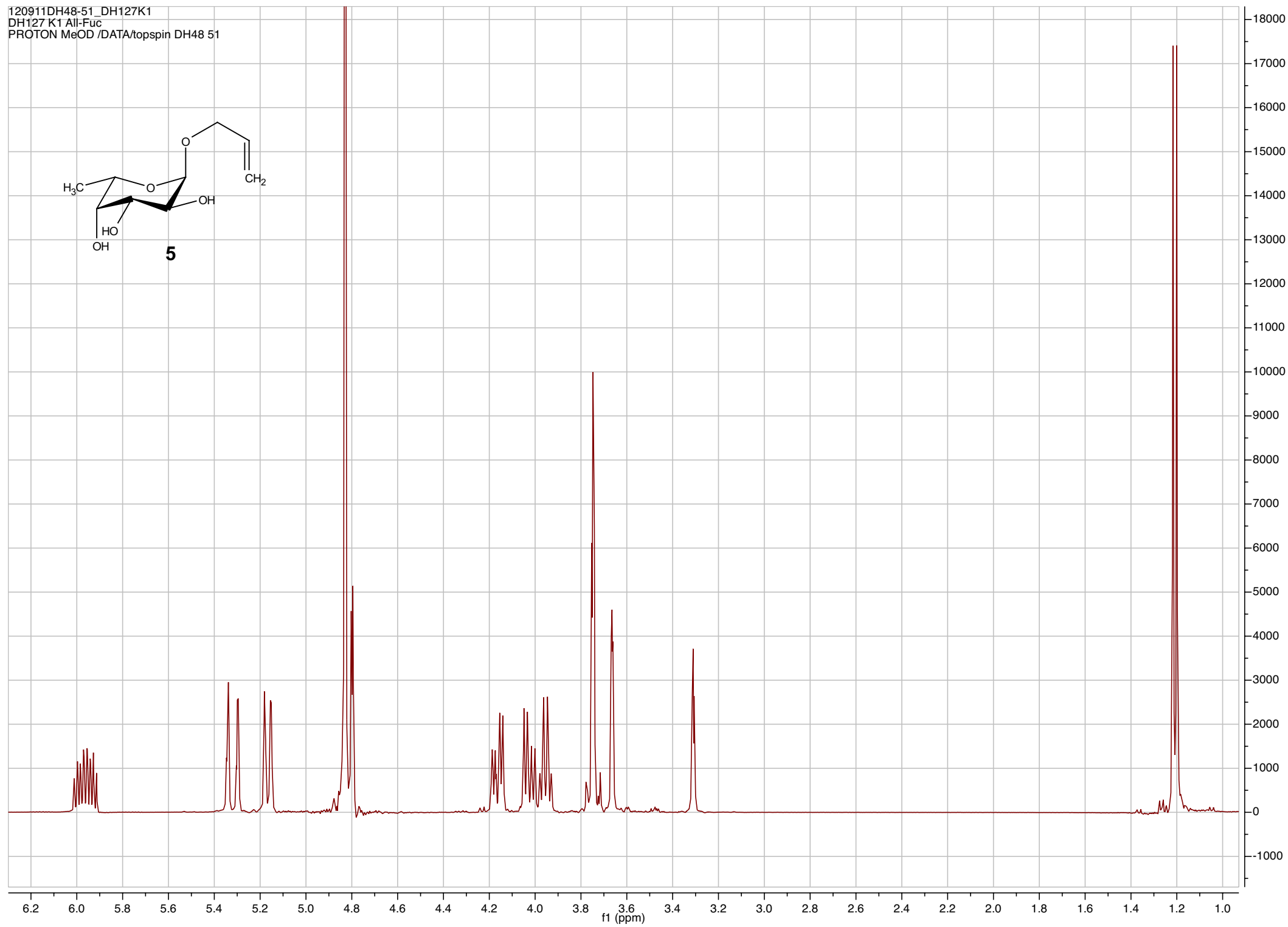
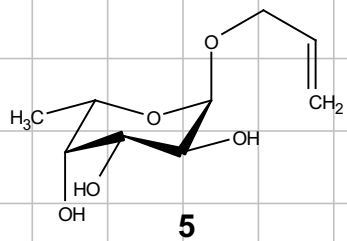
120731DH48-47_DH116H2Fr1
DH116H2Fr1 MeAllMann
PROTON_8scans MeOD /DATA/topspin DH48 47



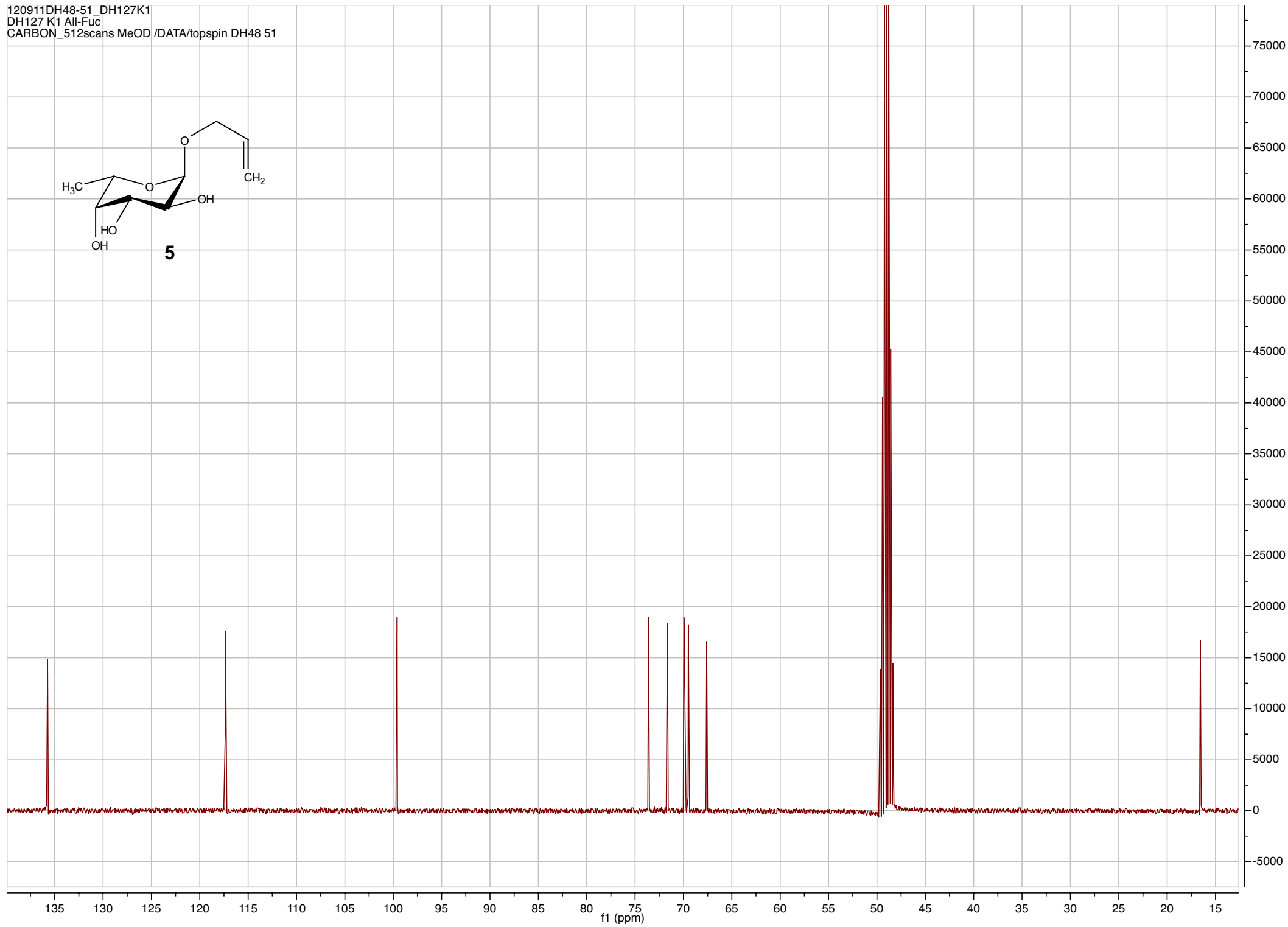
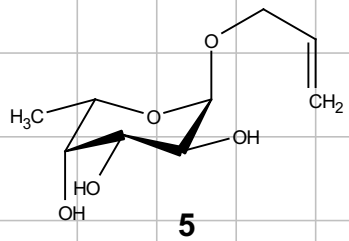
120731DH48-47_DH116H2Fr1
DH116H2Fr1 MeAllMann
CARBON_256scans MeOD /DATA/topspin DH48 47



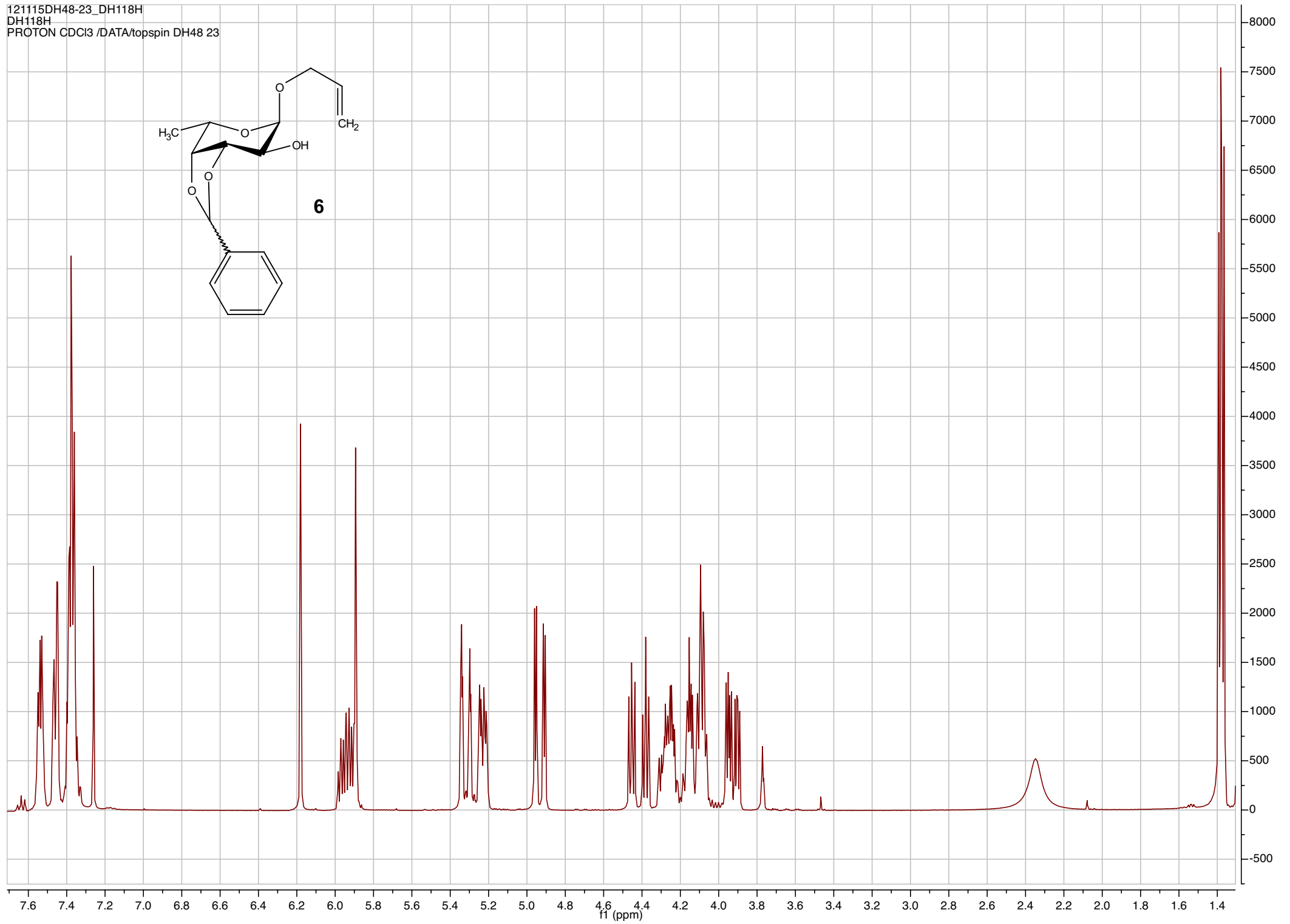
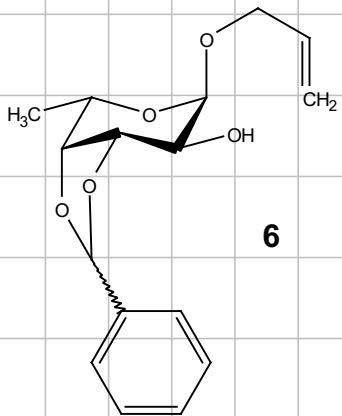
120911DH48-51_DH127K1
DH127 K1 All-Fuc
PROTON MeOD /DATA/topspin DH48 51



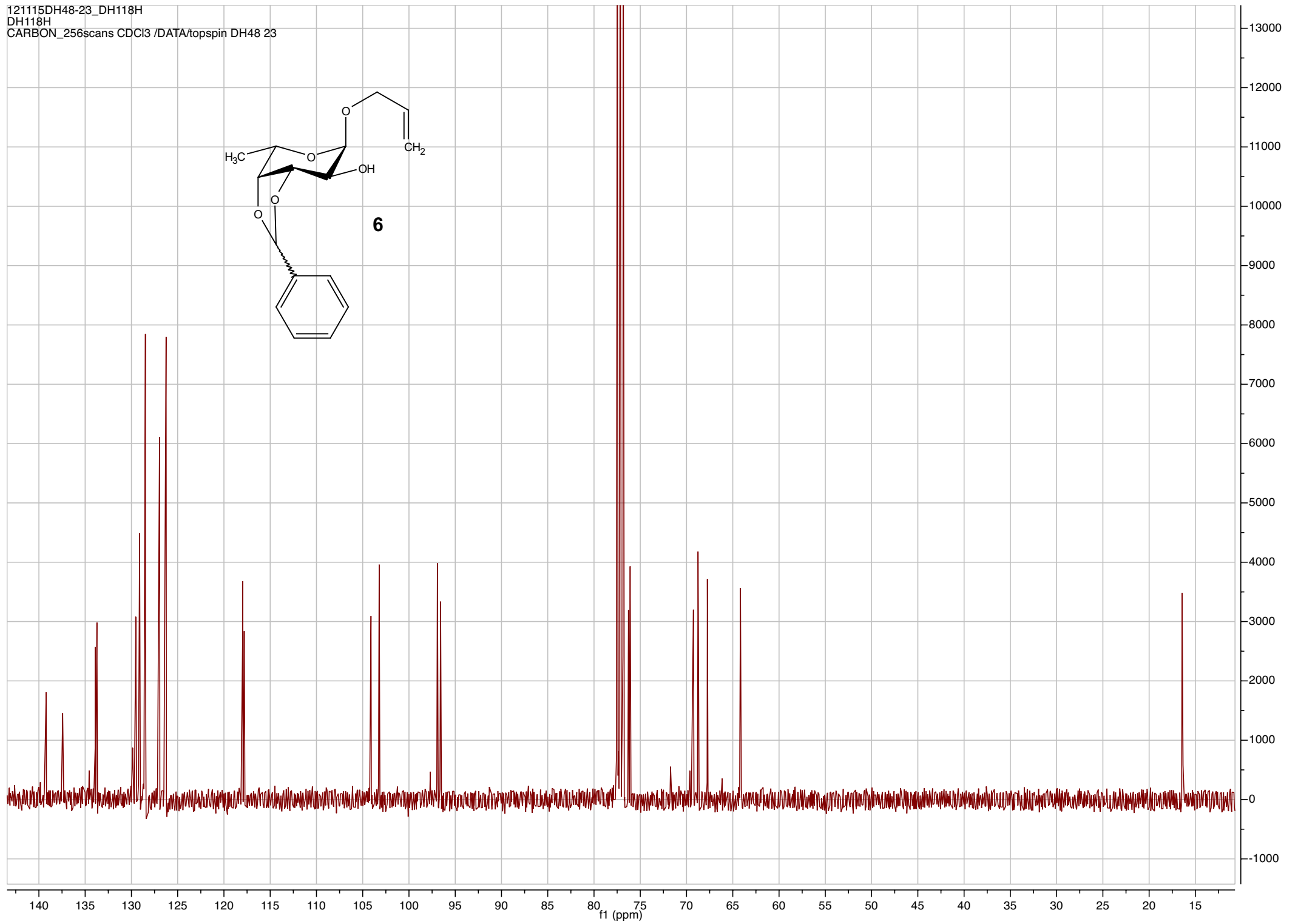
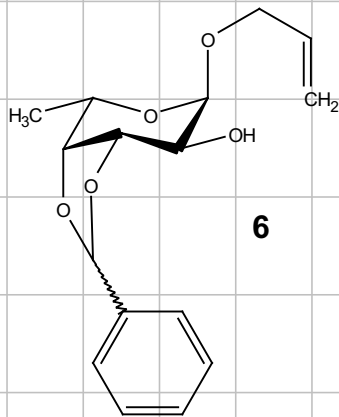
120911DH48-51_DH127K1
DH127 K1 All-Fuc
CARBON_512scans MeOD /DATA/topspin DH48 51



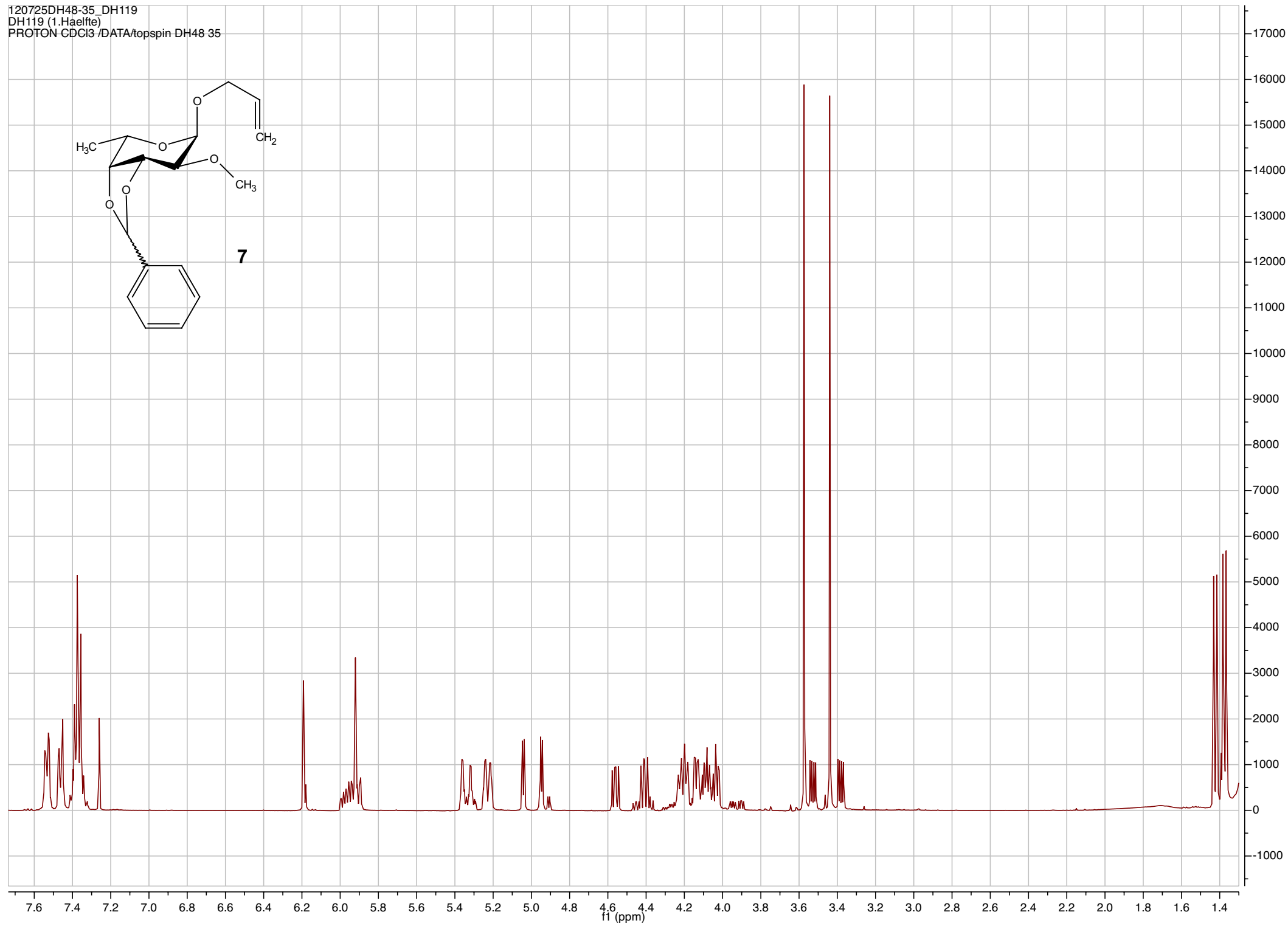
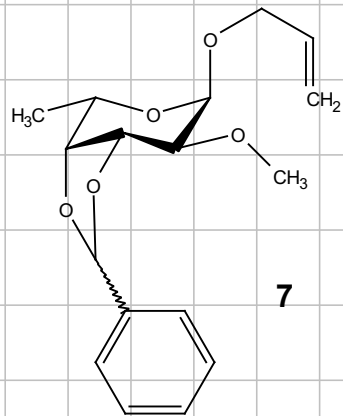
121115DH48-23_DH118H
DH118H
PROTON CDCI3 /DATA/topspin DH48 23

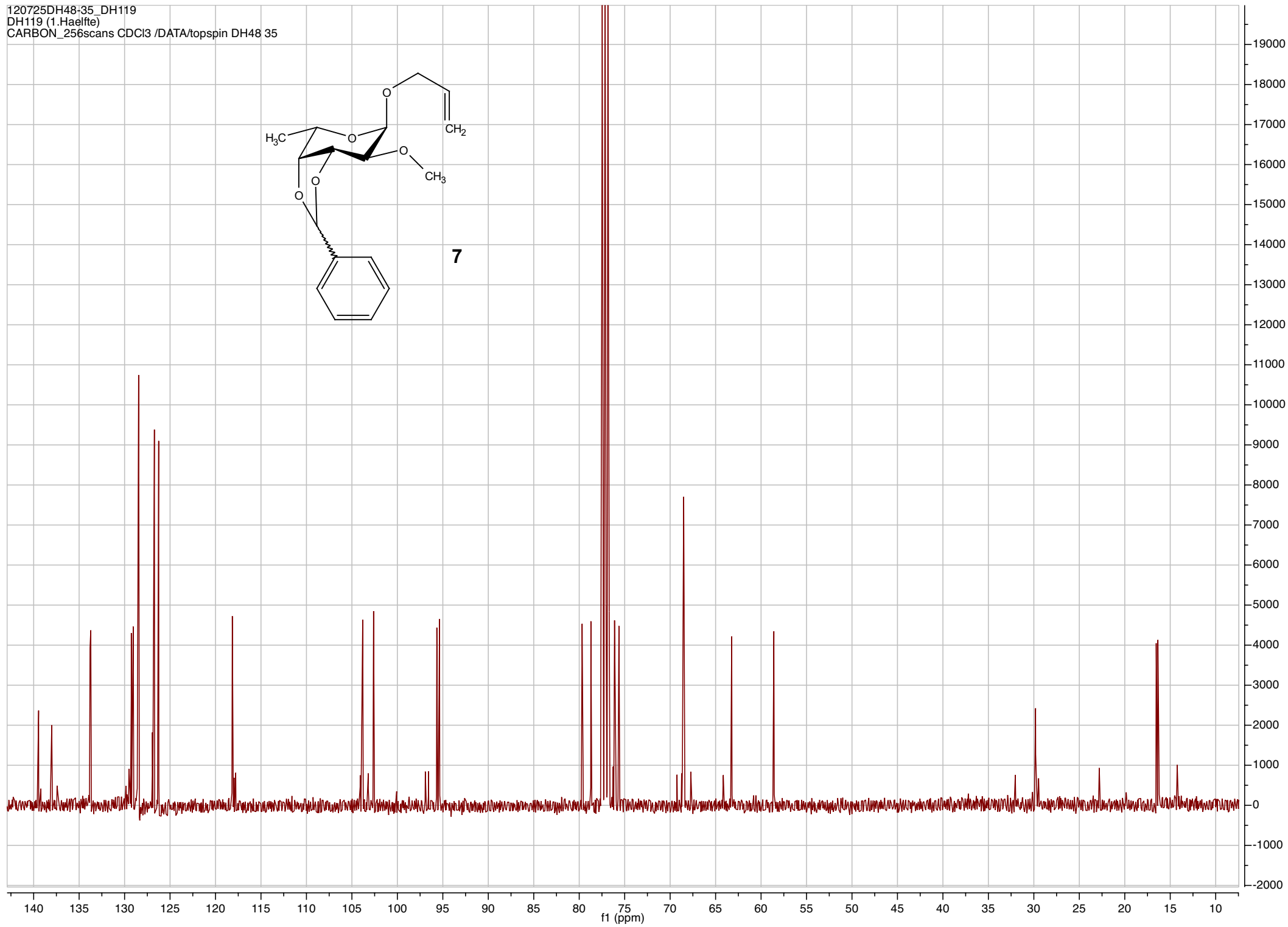
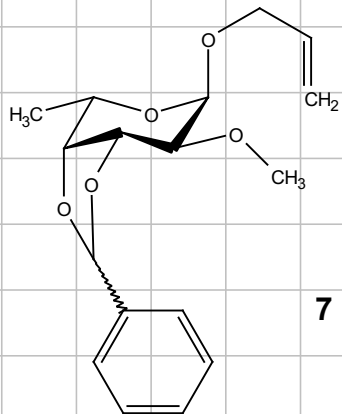


121115DH48-23_DH118H
DH118H
CARBON_256scans CDCI3 /DATA/topspin DH48 23

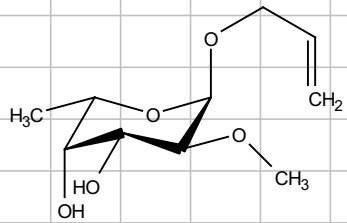


120725DH48-35_DH119
DH119 (1.Haelfte)
PROTON CDCl3 /DATA/topspin DH48 35

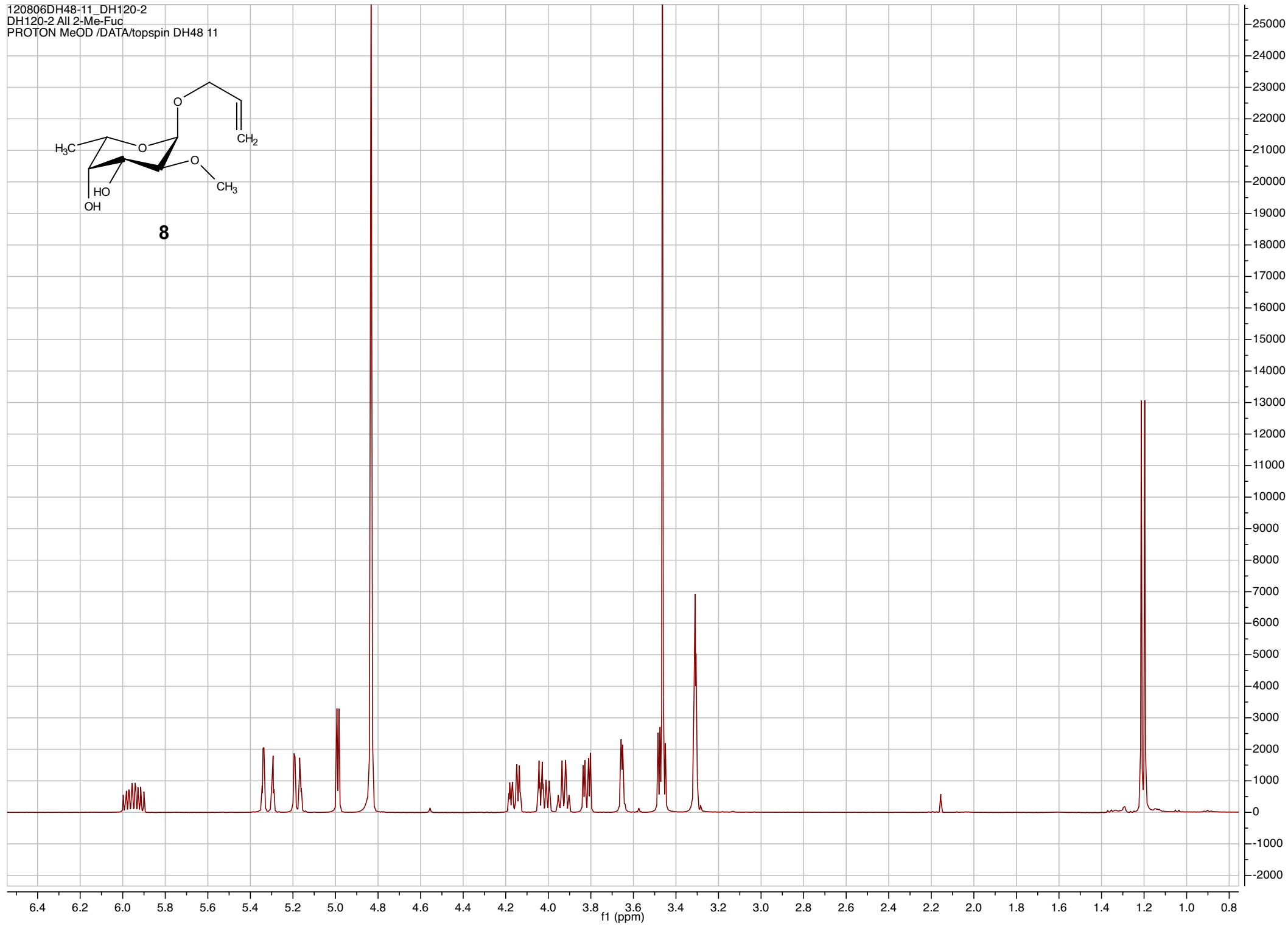




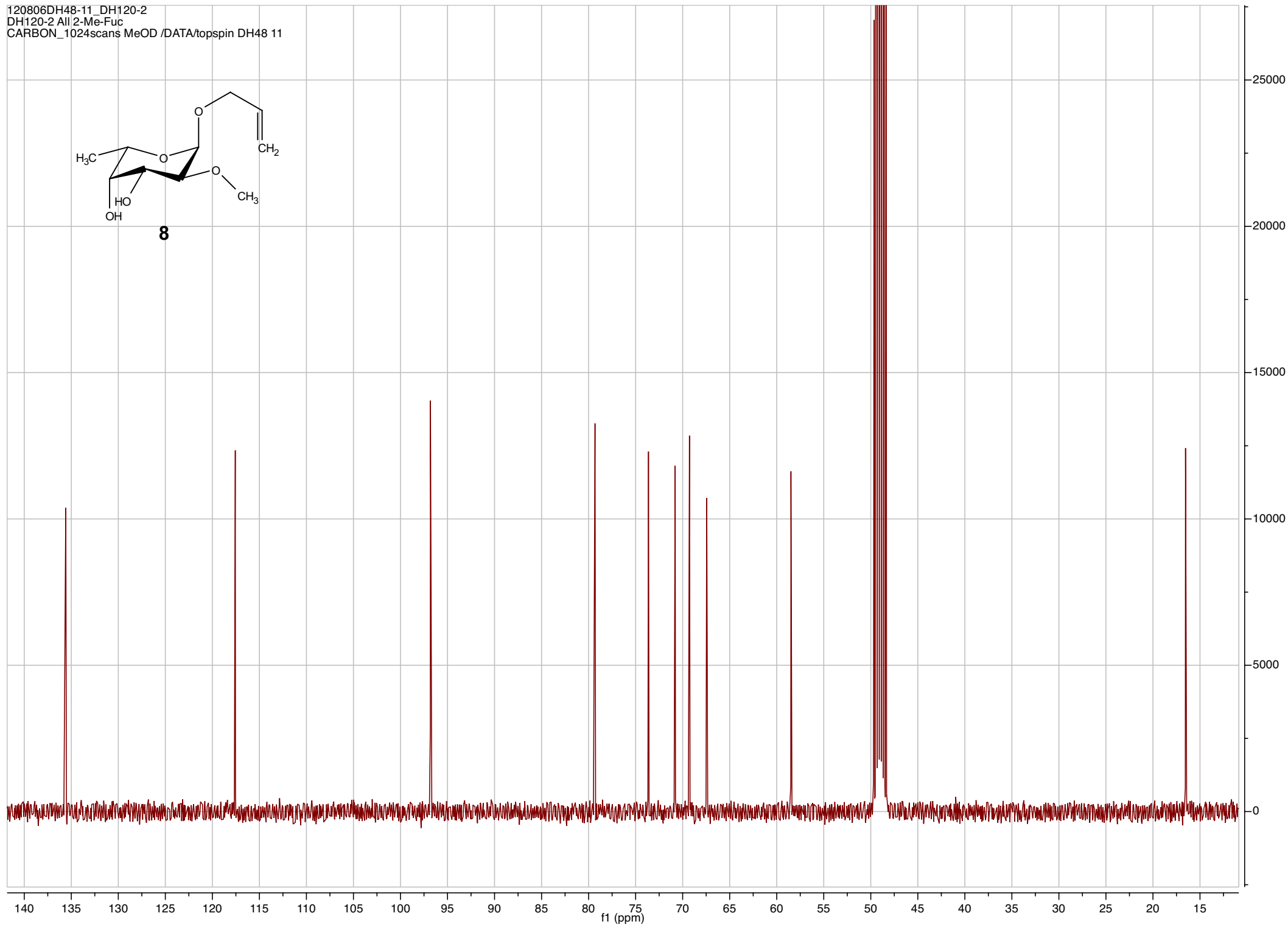
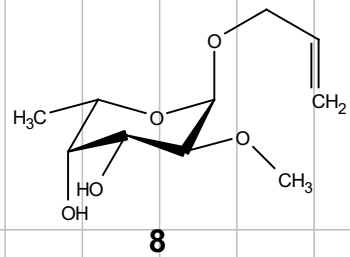
120806DH48-11_DH120-2
DH120-2 All 2-Me-Fuc
PROTON MeOD /DATA/topspin DH48 11



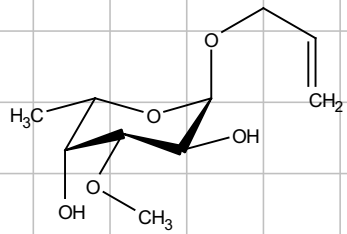
8



120806DH48-11_DH120-2
DH120-2 All 2-Me-Fuc
CARBON_1024scans MeOD /DATA/topspin DH48 11



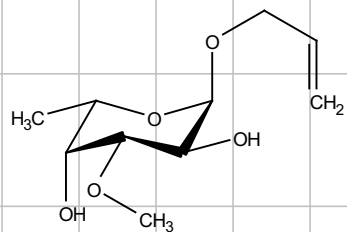
120920DH48-51DH128bFr1a
DH128b Fr. 1a
PROTON MeOD /DATA/topspin DH48 51



9



120920DH48-51DH128bFr1a
DH128b Fr, 1a
CARBON_256scans MeOD /DATA/topspin DH48 51



9

