

Supporting Information

Alam et al. 10.1073/pnas.1323408111

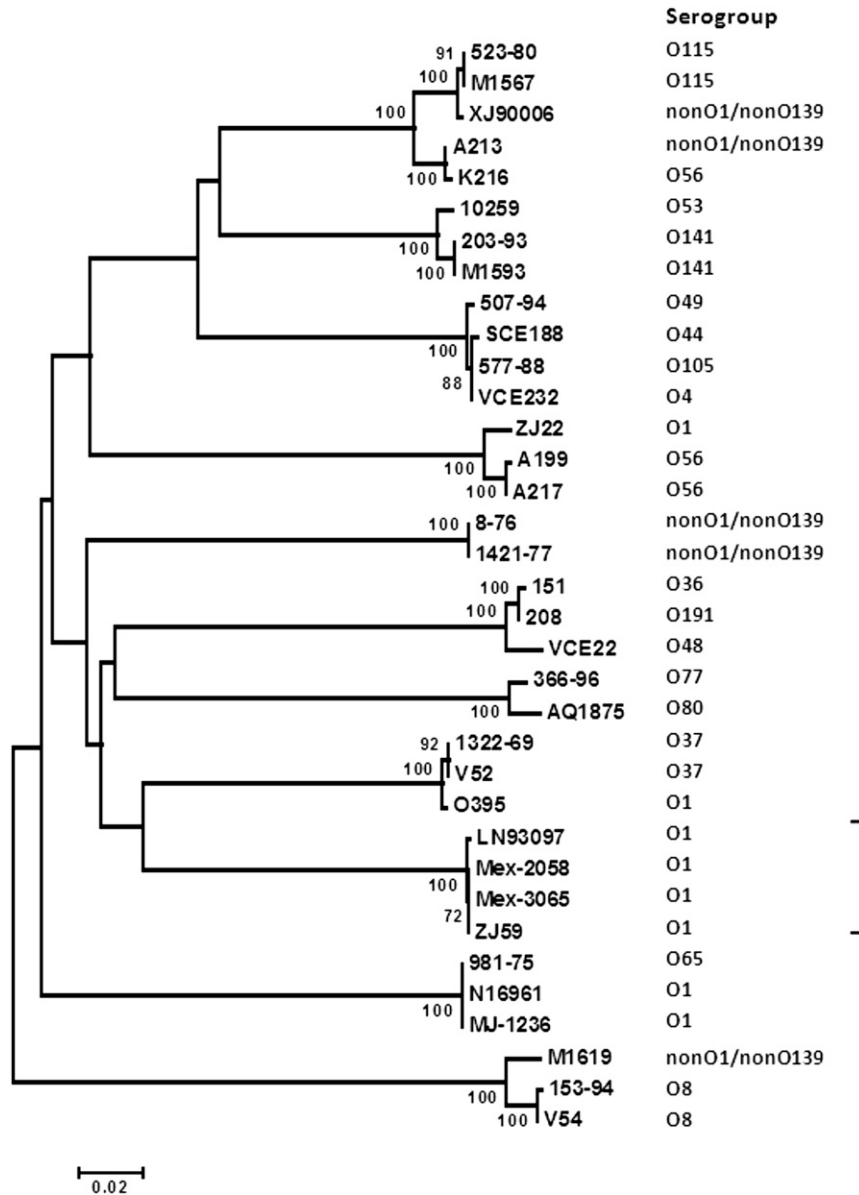


Fig. S1. The *tcpA* phylogenetic tree was constructed using neighbor joining. Mex-2058 and Mex-3065 strains represent the *TcpA* variant of *Vibrio cholerae* O1 biotype El Tor isolated in Mexico during 2000–2004 and share the cluster with *TcpA* of *V. cholerae* O1 strains isolated in China obtained from GenBank. All other *TcpA* sequences were from GenBank. Bootstrap values are percentages of 1,000 replications and, if 50% or greater, are indicated at the nodes.

