

File S1: Figure S1-5

Figure S1: Comparison of down-sampled DNA/RNA-seq data size and detected RDDs number between whole dataset and down-sampled subsets.

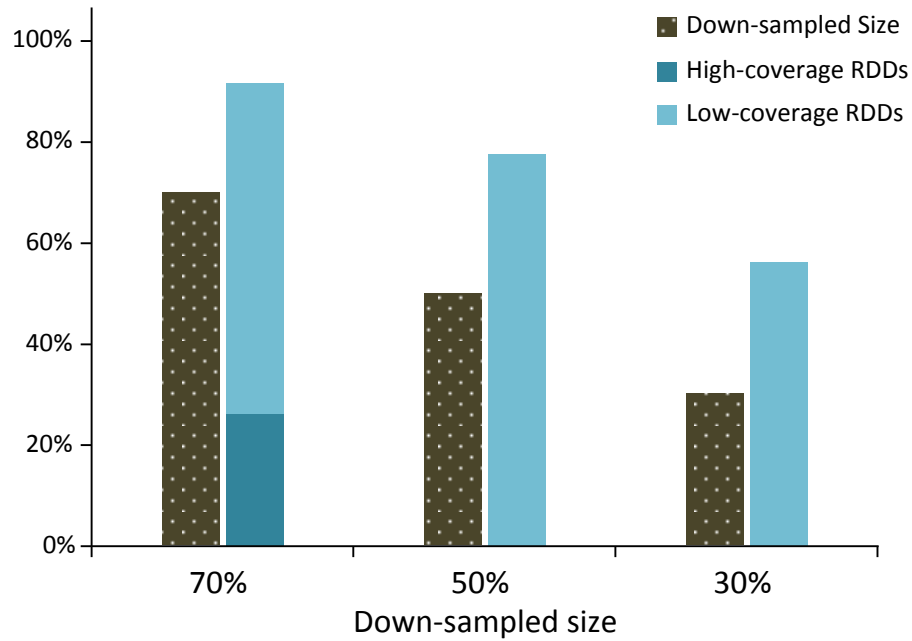


Figure S2: The distribution of RDD site type across different regions in the genome

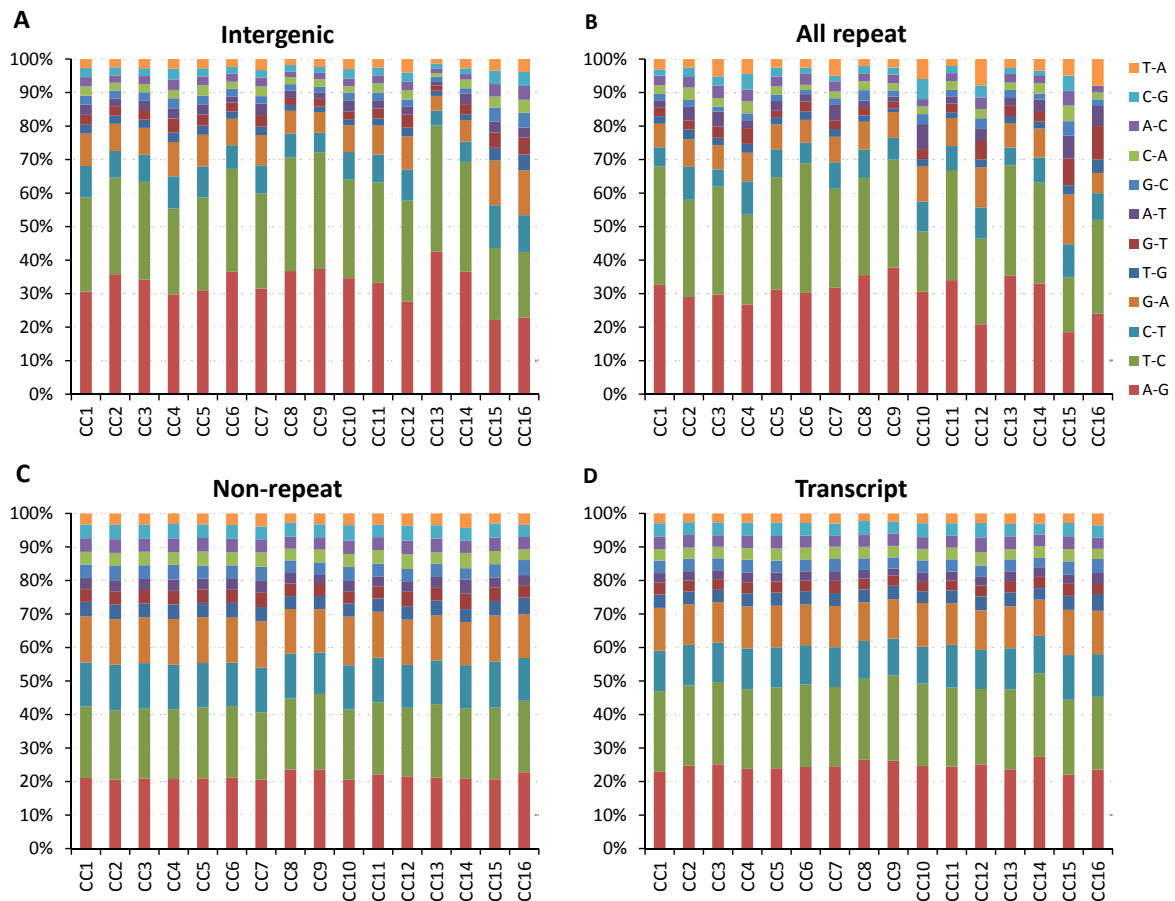


Figure S3: RDD site type distribution in Alu repeat, non-Alu repeat and non-repeat regions

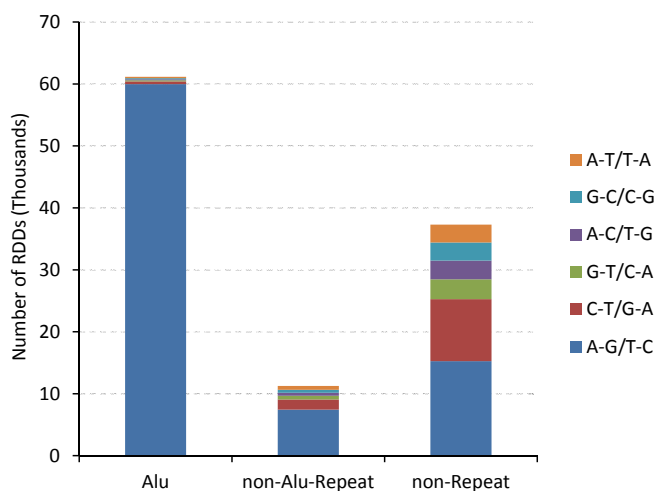


Figure S4: The distribution of RDDs in genic regions. The ratio of intronic RDDs ranges from 8.45% to 61.09% while ncRNAs' ranges from 13.9% to 68.55% and correlation coefficient is -0.95.

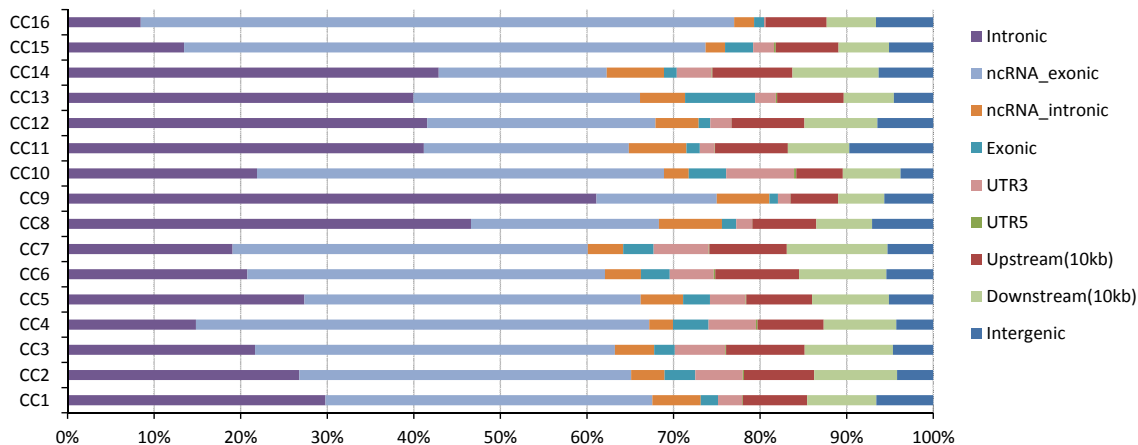


Figure S5: percentage of the genes with miRNA target RDDs that were up-regulated in primary prostate tumor in published microarray datasets.

