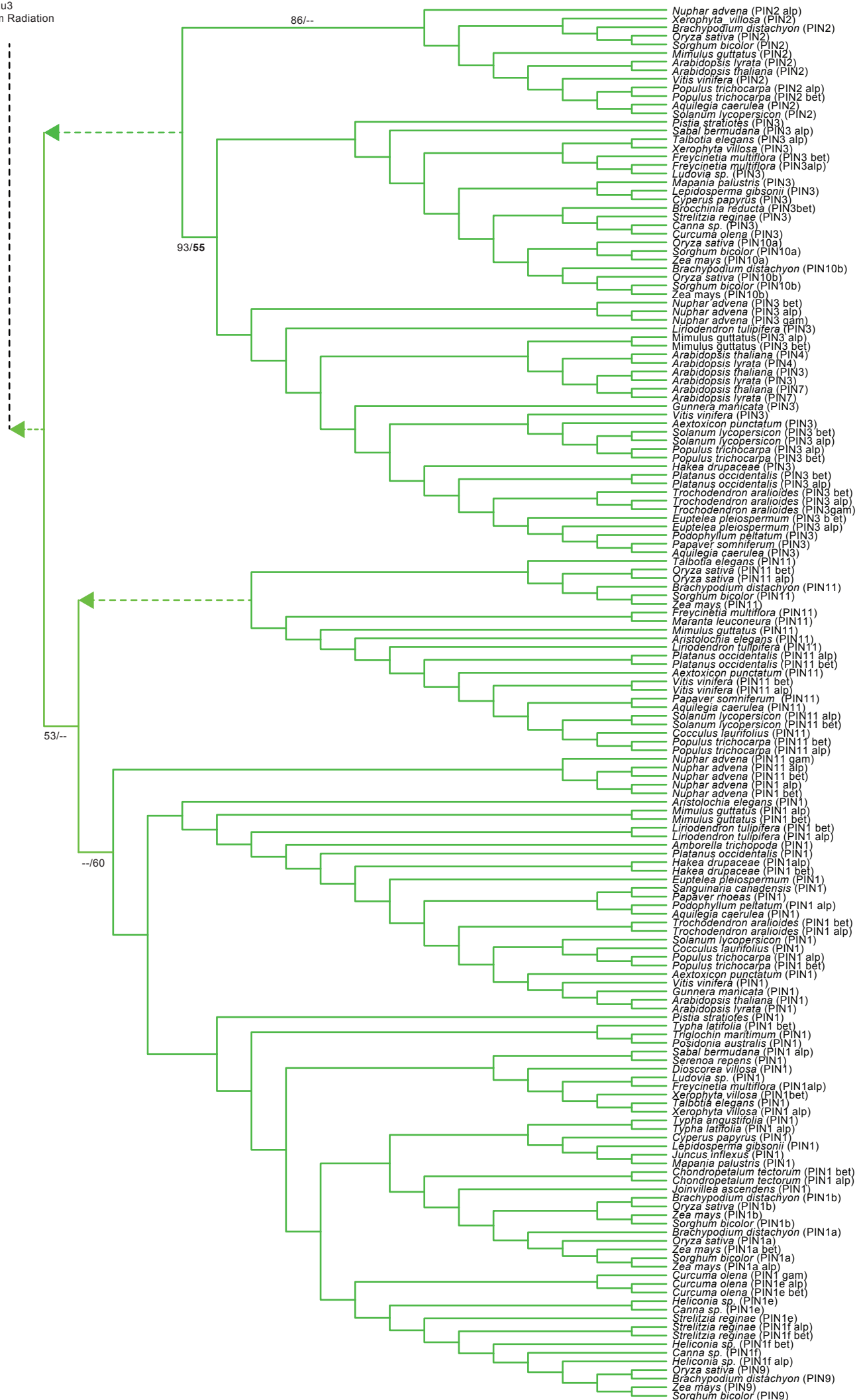


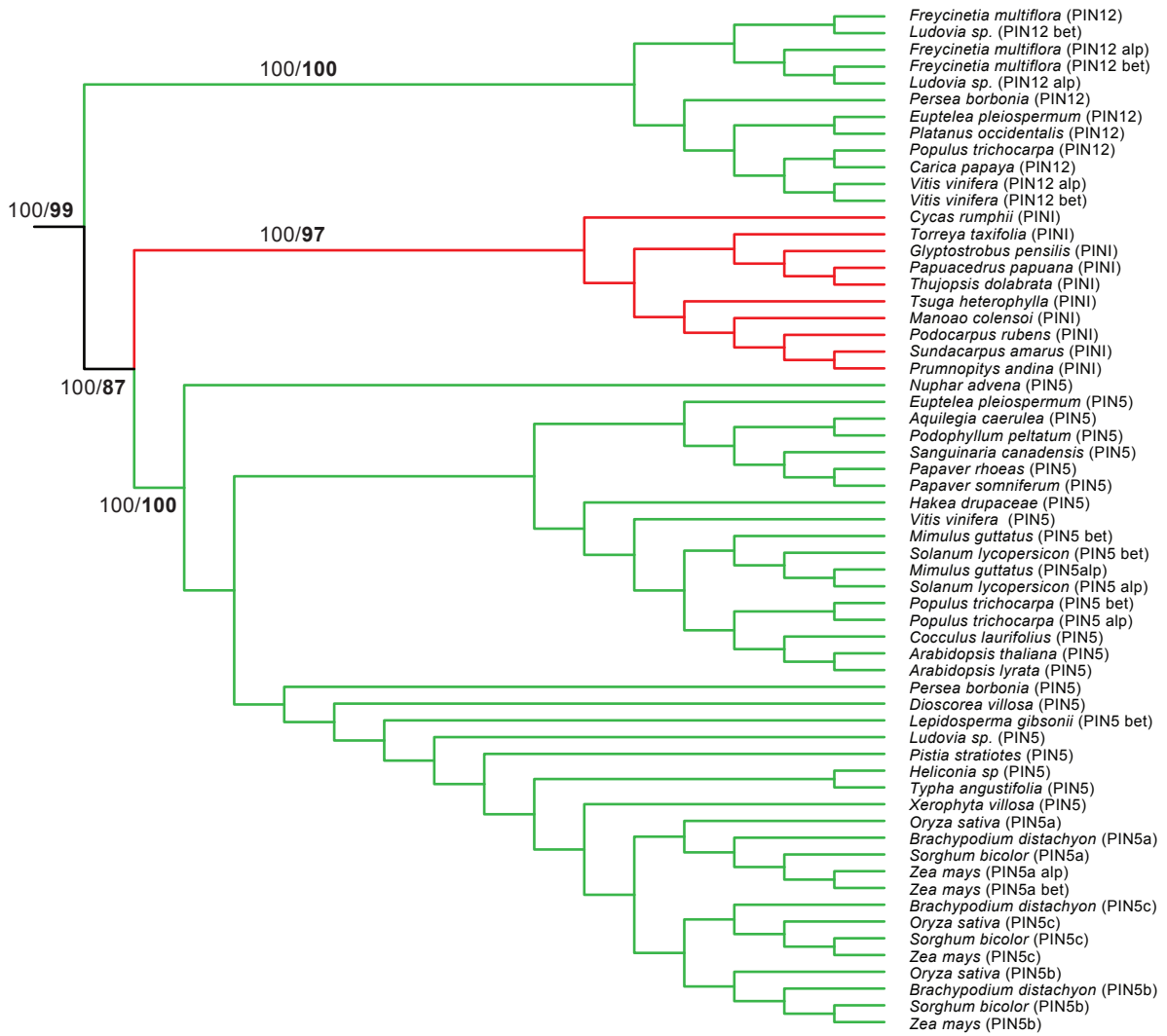
Eu3



Additional Figure 1: Analyses of individual lineages Eu1, Eu2, Eu3, Cladograms depicting topologies derived from GARLI analyses (analyses conducted with bryophyte and lycophte outgroups but outgroups not shown). Support values shown for the major nodes, absent values for major nodes indicate no support. ML bootstrap support values on the left, posterior probabilities derived from bayesian analyses on the right in bold.



Eu1



Eu2

