

 **50% OFF** Individual CD Pricing  
**Buy online now and save!** ▶ **Pulmonary CD Collection**  
 While supplies last

 **50% OFF** Individual CD Pricing  
**Buy online now and save!** ▶ **Pulmonary CD Collection**  
 While supplies last

[Sign in](#) | [Register](#)

*Enter words / phrases / DOI*

[Advanced Search](#)

[← Previous Article](#)

**February 2013**  
Volume 266, Issue 2

[Next Article →](#)

[+ SHARE](#)

**Article Tools**

- [Add to myRSNA](#)
- [Add to Favorites](#)
- [Email to a Friend](#)
- [Download Citation](#)
- [Track Citations](#)
- [Rights & Permissions](#)

**Original Research**  
Gastrointestinal Imaging

**Neuroendocrine Liver Metastasis Treated by Using Intraarterial Therapy: Volumetric Functional Imaging Biomarkers of Early Tumor Response and Survival**

Vivek Gowdra Halappa, MD, , Celia Pamela Corona-Villalobos, MD, , Susanne Bonekamp, DVM, PhD, , Zhen Li, MD, , Diane Reyes, RN, , David Cosgrove, MBBCh, , Timothy M. Pawlik, MD, , Luis Alberto Diaz, MD, , Nikhil Bhagat, MD, , John Eng, MD, , Jean-François Geschwind, MD, and , Ihab R. Kamel, MD, PhD

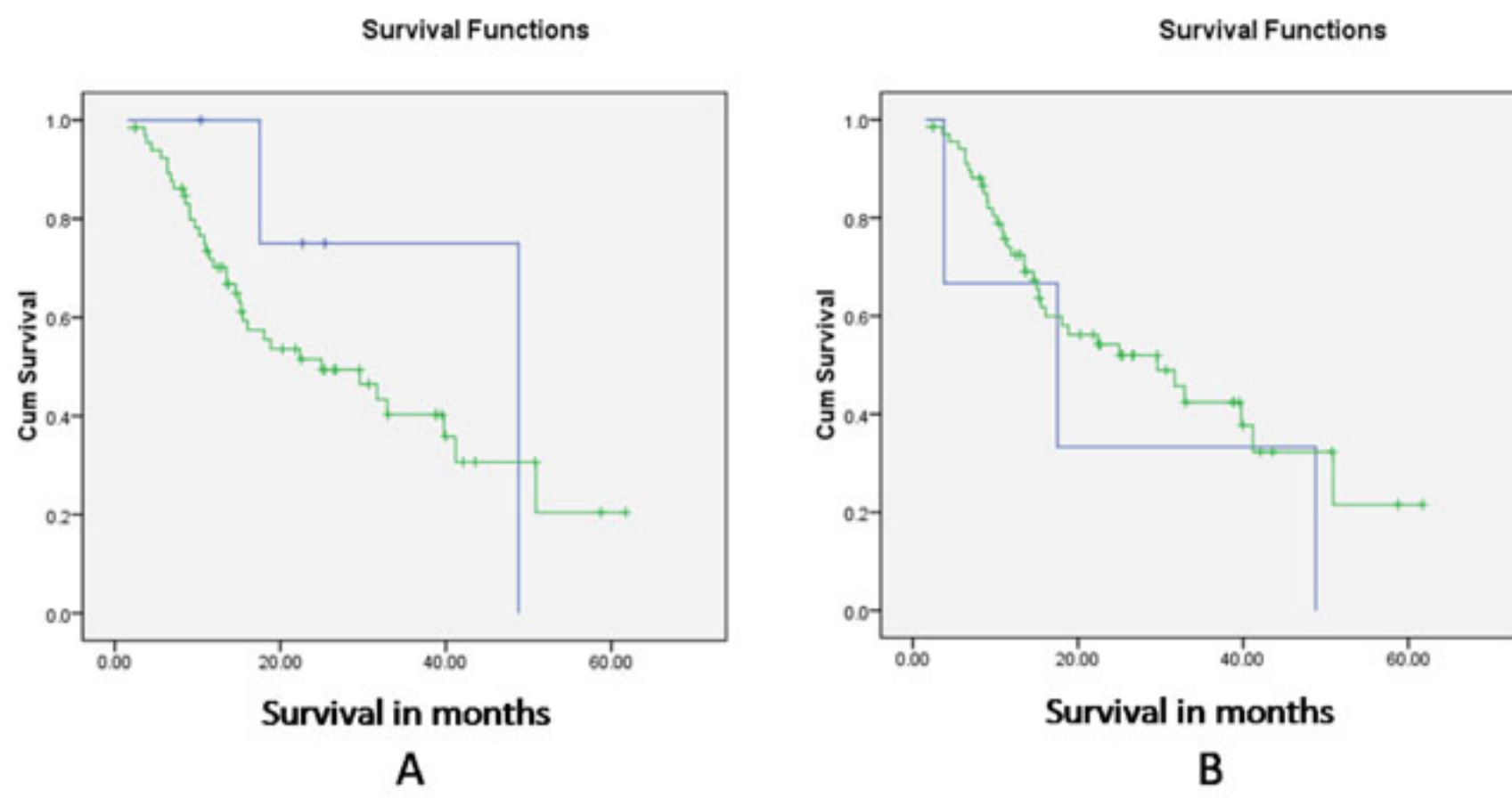
From the Russell H. Morgan Department of Radiology and Radiological Sciences (V.G.H., C.P.C., S.B., Z.L., D.R., N.B., J.E., J.F.G., I.R.K.), Sidney Kimmel Comprehensive Cancer Center (D.C., L.A.D.), and Department of Surgery (T.M.P.), Johns Hopkins Hospital, 600 N Wolfe St, Room 143, Baltimore, MD 21287.

DOI: <http://dx.doi.org/10.1148/radiol.12120495>

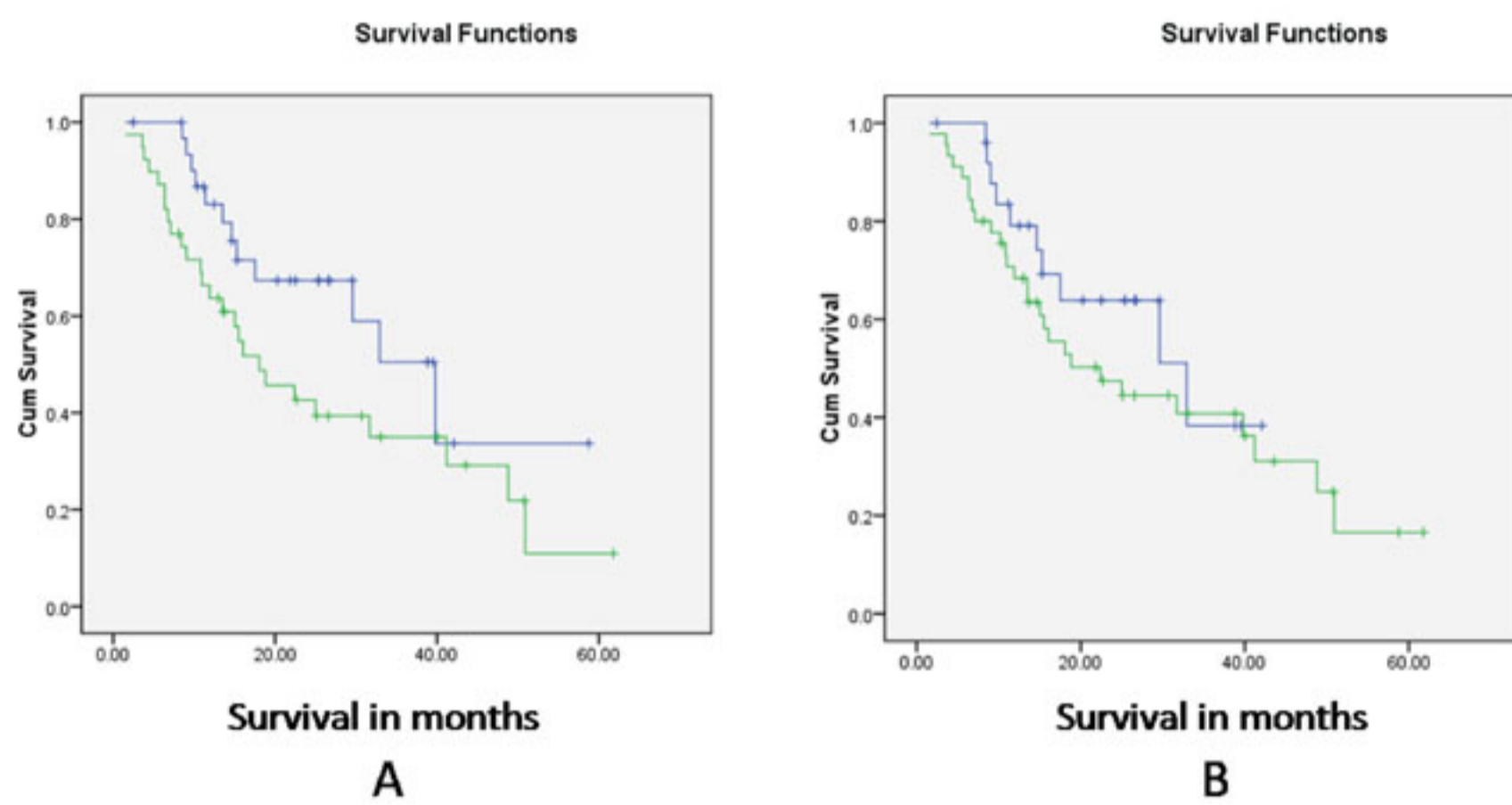
[Abstract](#) | 
 [Full Text](#) | 
 [Figures](#) | 
 [References](#) | 
 [Supplemental Materials](#) | 
 [PDF](#)

© [RSNA](#), 2012

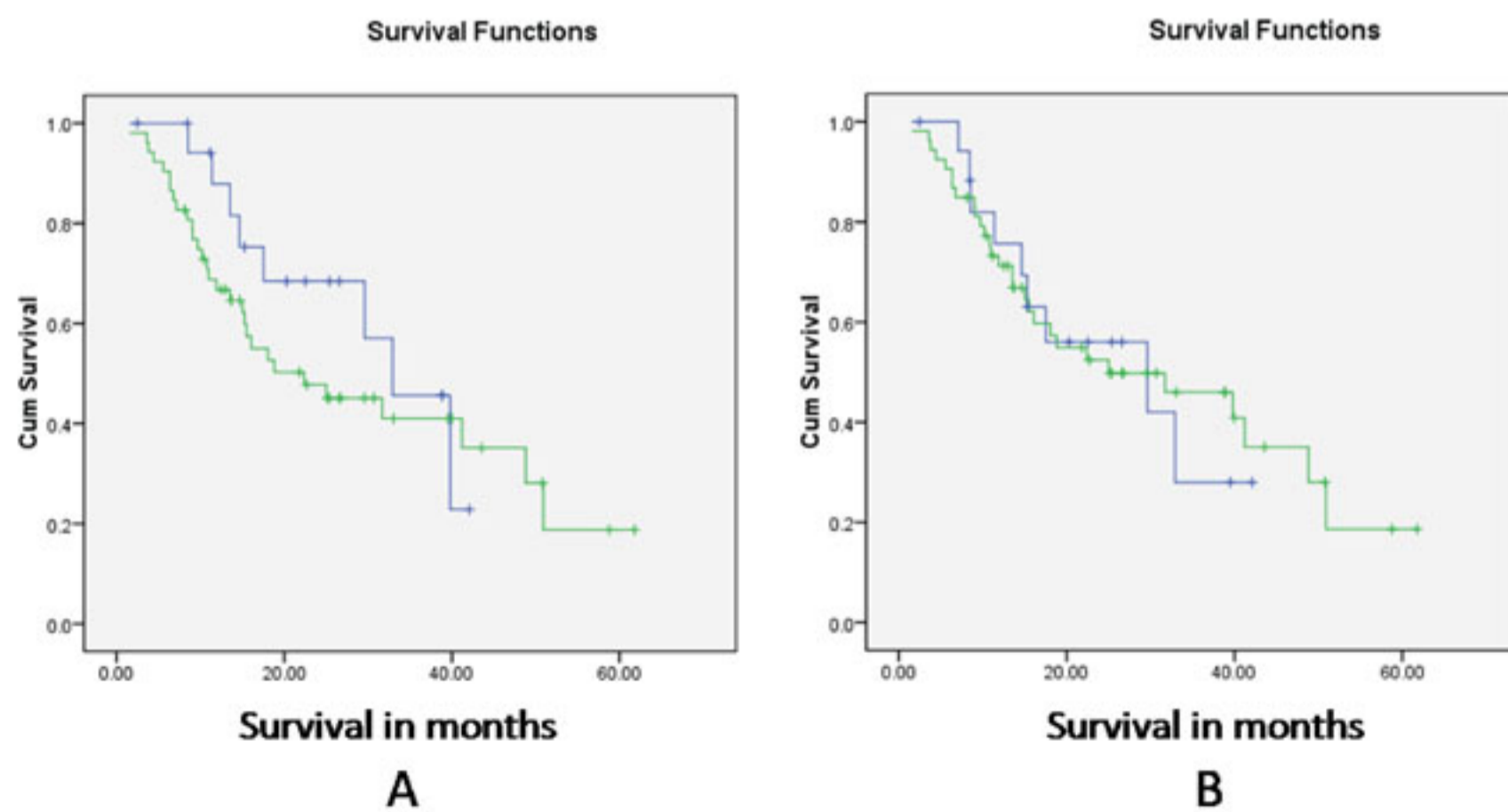
**Supplemental Figures**



**Figure E1:** Kaplan-Meier curves for assessing response according to RECIST criteria for **(a)** index lesion (log-rank test,  $P < .442$ ) and **(b)** up to two target lesions (log-rank test,  $P < .378$ ). Blue curve = responders (complete response and partial response). Green curve = nonresponders (stable disease and progressive disease). *Cum* = cumulative.



**Figure E2:** Kaplan-Meier curves for assessing response according to EASL criteria for **(a)** index lesion (log-rank test,  $P < .067$ ) and **(b)** up to two target lesions (log-rank test,  $P < .317$ ). Blue curve = responders (complete response and partial response). Green curve = nonresponders (stable disease and progressive disease). *Cum* = cumulative.



**Figure E3:** Kaplan-Meier curves for assessing response according to mRECIST criteria for **(a)** index lesion (log-rank test,  $P < .362$ ) and **(b)** up to two target lesions (log-rank test,  $P < .926$ ). Blue curve = responders (complete response and partial response). Green curve = nonresponders (stable disease and progressive disease). *Cum* = cumulative.

