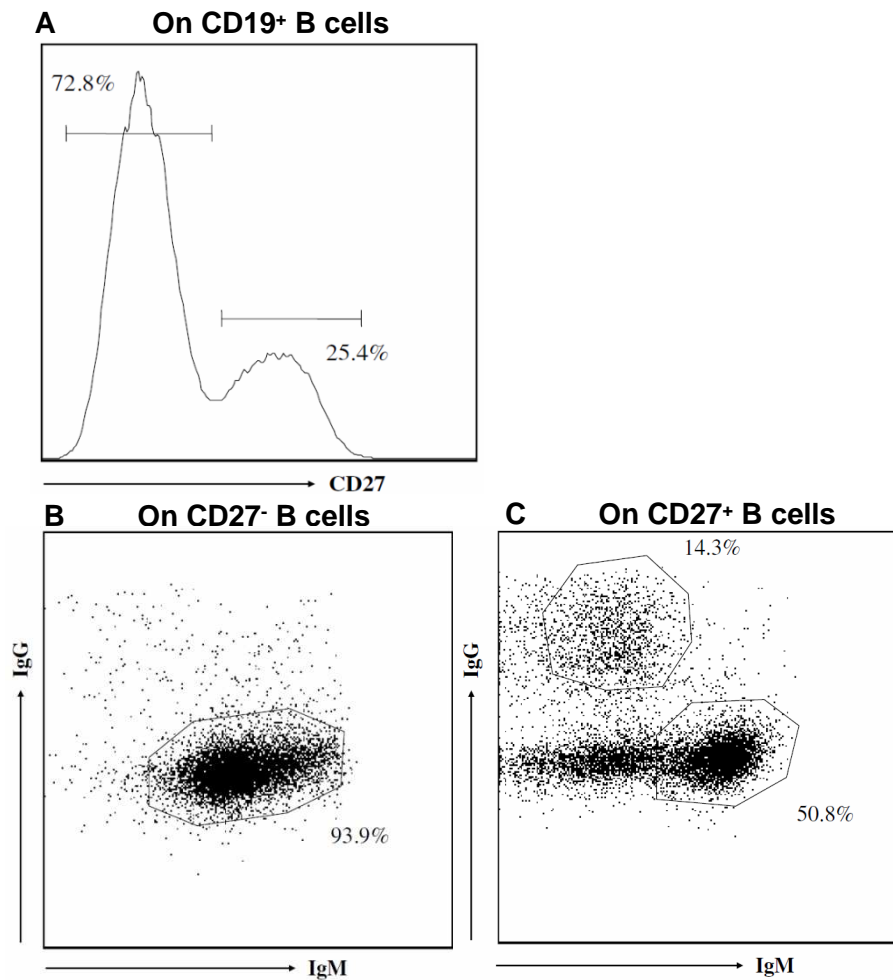
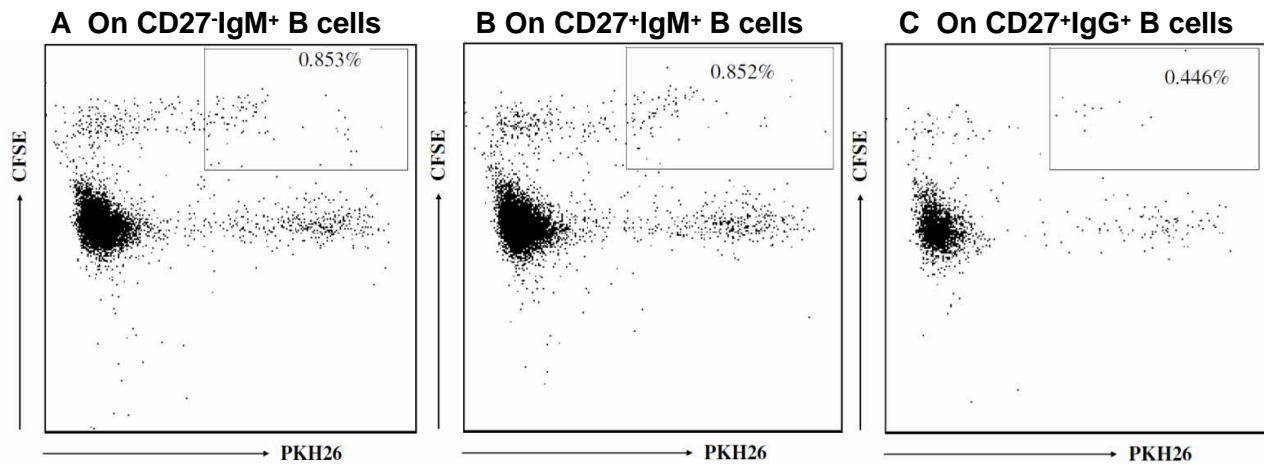


Supplemental Figure 1



Supplemental Figure 1: Representative CD27⁻IgM⁺, CD27⁺IgM⁺ and CD27⁺IgG⁺ B cells sorting. A) Gating strategy for the flow cytometric isolation of CD27⁻ and CD27⁺ PB B cells. B) Dot plots indicate the sizes of CD27⁻IgM⁺ B cells and C) CD27⁺IgM⁺ and CD27⁺IgG⁺ B-cell subsets sorted for the limiting dilution studies. Gates show percentages of CD27⁻IgM⁺ (B), CD27⁺IgM⁺ and CD27⁺IgG⁺ B cells (C).

Supplemental Figure 2



Supplemental Figure 2: Gating strategy for anti-D-specific PB B cells. R₂R₂ RhD⁺ red blood cells (RBCs) were stained with either red-fluorescent PKH26 or green-fluorescent CFSE membrane dyes and then incubated with PB B cells. Gates show percentages of double positive dots representing anti-D-specific CD27-IgM⁺ (A), CD27⁺IgM⁺ (B) and CD27⁺IgG⁺ (C) B cells isolated from the hyperimmunized RhD-4 anti-D donor.

Supplemental Table 1: Reverse primer sequences for nested Ig-PCR on RACE products and Forward (F), Reverse (R) and extra reverse (S) primer sequences for nested BCL6-PCR

R1-C _γ 1-4	5'-TGTCCACCTTGGTGTGCTGGGCT-3'
R1-C _μ	5'-CACTGGAAGAGGCACGTTCTTTTCT-3'
R1-C _κ	5'-ACACTCTCCCCTGTTGAAGCTCTTTG-3'
R1-C _λ	5'-TGAACATTCTGTAGGGGCCACTGTCTT-3'
R2-C _γ 1-4	5'-TTCGGGGAAGTAGTCCTTGACCAG-3'
R2-C _μ	5'-GGAATTCTCACAGGAGACGAGGG-3'
R2-C _κ	5'-CAGATTTCAACTGCTCATCAGATGGC-3'
R2-C _λ	5'-CACCAGTGTGGCCTTGTTGGCTTG-3'
BCL6-1F	5'-GCCGGACACCAGGTGATTATT-3'
BCL6-1R	5'-CTCTCATTAGGAAGATCACGGC-3'
BCL6-2F	5'-AATGCTTTGGCTCCAAGTTTTC-3'
BCL6-2R	5'-TAGACACGATACTTCATCTCATCTG-3'
BCL6-S	5'-CAAGGAAAGCAGTTTGCAAGC-3'