

Suppl. Fig. 1

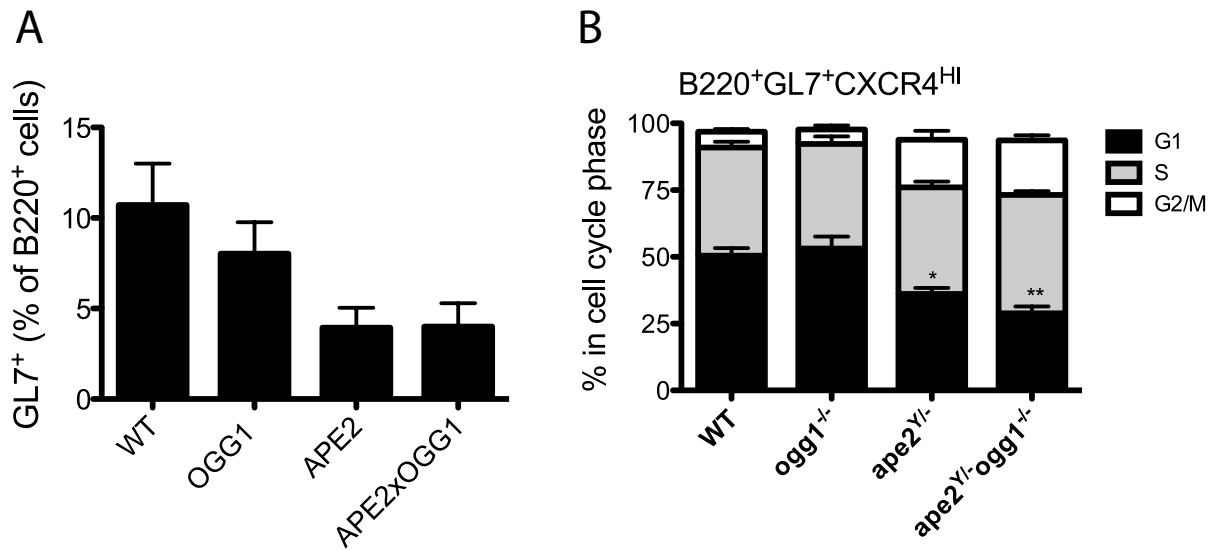


Figure S1. Germinal center defect in APE2-deficient mice is not more severe on an Ogg1-deficient background. (A) PP GL7⁺ GC cells shown as a percent of B220⁺ cells, as determined by flow cytometry. (B) Propidium iodide stain for DNA content of PP cells gated on B220⁺GL7⁺CXCR4^{HI} cells shows fewer cells in G1 phase in APE2-deficient and APE2-OGG1- doubly-deficient GC cells (mean \pm SEM, n=4, *p<0.05, **p<0.01 vs. WT for G1 phase. Slight increase in the double knockout relative to APE2 single knockout was very consistent, but not statistically significant.