

FIGURE LEGENDS:**Figure 1. Screening, Randomization, and Enrollment of Study Couples**

When we considered only the first 2 cycles of treatment, the results were identical except for two couples in the IVF arm who discontinued treatment after the first IVF cycle.

^a 25 couples chose to discontinue treatment after a median of 4.0 cycles (interquartile range, 3 to 5 cycles) over a median duration of 12.2 months (interquartile range, 8.8 to 17.4 months).

^b The median duration of follow-up for these couples whom we were unable to contact was 18.3 months (interquartile range, 12.0 to 21.4 months) and was 17.5 months (interquartile range 12.3 to 21.9 months) among couples who completed follow-up.

Supplemental Figures 1a & 1b. Kaplan-Meier estimates of cumulative incidence of pregnancy leading to delivery of a live born, for the controlled ovarian hyperstimulation arms combined versus immediate IVF.

Analysis used a Cox proportional hazards model. Supplemental Figure 1b includes treatment cycle-independent pregnancies. HR = Hazard Ratio

Supplemental Table 1. Number (%) of women with adverse outcomes and multiple births from treatment and independent pregnancies combined.

	Randomization arm			Total
	Clomiphene/IUI	Gonadotropin/IUI	Immediate IVF	
<i>No. women randomized</i>	51	52	51	154
Adverse cycle outcomes:				
Hyperstimulation ^a	2 (3.9)	3 (5.8)	3 (5.9)	8 (5.2)
Ectopic or heterotopic pregnancy	1 (2.0)	3 (5.8)	0 (0)	4 (2.6)
Spontaneous abortion (< 20 weeks) ^b	8 (15.7)	10 (19.2)	11 (21.6)	29 (18.8)
Therapeutic abortion (< 20 weeks)	0 (0)	0 (0)	1 (2.0) ^c	1(0.6)
Selective reduction	0 (0)	1 (1.9) ^d	0 (0)	1 (0.6)
Fetal demise (≥ 20 weeks)	1 (2.0)	0 (0)	0 (0)	1 (0.6)
<i>No. of women with live birth(s):</i>	25	22	24	71
Multiple births:				
Twins ^e	6 (24.0)	3 (13.6)	3 (12.5)	12 (16.9)
Triplets	0 (0)	0 (0)	1 (4.2)	1 (1.4)
Neonatal death	0 (0)	0 (0)	0 (0)	0 (0)
Pre-term delivery (< 37 weeks)	4 (16.0)	6 (27.3)	2 (8.3)	12 (16.9)
Birth weight (of one or more babies) ^f				
Low (1500-2500 g)	2 (8.0)	2 (9.1)	2 (8.3)	6 (8.5)
Very low (<1500 g)	2 (8.0)	1 (4.5)	0 (0)	3 (4.2)

^a In the FSH/IUI arm one woman had two episodes of hyperstimulation.

^b There were 4, 2, and 2 women with a treatment-cycle independent pregnancy resulting in spontaneous abortion in the CC/IUI, FSH/IUI, and immediate IVF arms, respectively. There were multiple occurrences of SABs: two women had 2 SABs and one had 3 SABs in the CC/IUI arm, two women had 2 SABs in the FSH/IUI arm, and two women had 2 SABs in the immediate IVF arm.

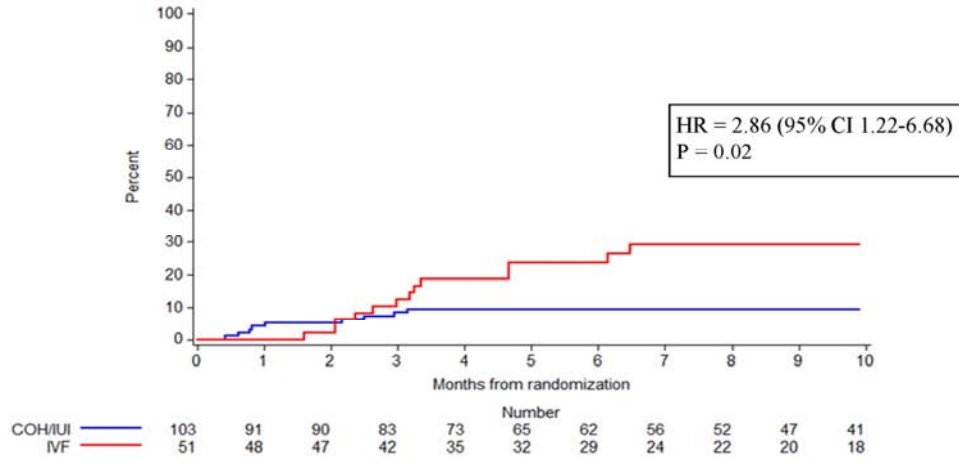
^c Therapeutic abortion in a treatment-cycle independent pregnancy.

^d Pregnancy with two fetal sacs of which one was selectively reduced and one was subsequently spontaneously aborted.

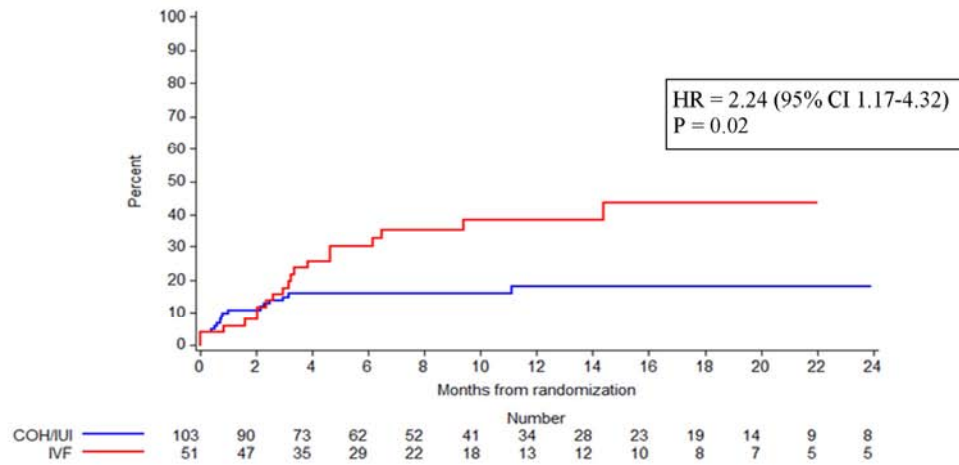
^e One set from CC/IUI, four sets from IVF, and one set from a treatment-cycle independent pregnancy in the CC/IUI arm; one set from FSH/IUI, and two from IVF in the FSH/IUI arm; and three from IVF in the IVF arm.

^f There were two twin gestations (1 CC/IUI and 1 FSH/IUI) with one low birth weight and one very low birth weight twin.

ACCEPTED MANUSCRIPT



Supplemental Figure 1a



Supplemental Figure 1b