

Visual Field Profile of Optic Neuritis

A Final Follow-up Report From the Optic Neuritis Treatment Trial From Baseline Through 15 Years

John L. Keltner, MD; Chris A. Johnson, PhD; Kimberly E. Cello, BS; Mariya Dontchev, MPH; Robin L. Gal, MSPH; Roy W. Beck, MD, PhD; for the Optic Neuritis Study Group

Arch Ophthalmol. 2010;128(3):330-337

eTable 1. Reader Agreement^a

Readers in Agreement	No. (%) of Visual Fields
Visits 1-8 and Years 1-5, 10, and 15	
3/3	7052 (67.7)
2/3	2832 (27.2)
0/3	537 (5.1)
Total	10 421 (100)
Retest, Visits 1-8	
3/3	232 (59.8)
2/3	135 (34.8)
0/3	21 (5.4)
Total	388 (100)

^aTwenty-two visual fields were omitted due to very poor patient reliability.

eTable 2. Frequency of VF Abnormalities for the Affected and Fellow Eyes

Classification	Baseline (Visit 1)	Visits 2-8	Years				
			1	5	10	15	
No. of VFs							
AE	423	3003	422	389	263	233	
FE	454	1731	419	391	265	236	
No. of Patients							
AE	423	437	422	389	263	233	
FE	454	439	419	391	265	236	
NLP or no VF examination performed, No. of patients							
AE	31	17	32	65	191	221	
FE	0	15	35	63	189	218	
Abnormal, No. (%) of VFs							
AE	423 (100.0)	2088 (69.5)	203 (48.1)	198 (50.9)	130 (49.4)	118 (50.6)	
FE	339 (74.7)	750 (43.3)	167 (39.9)	153 (39.1)	91 (34.3)	84 (35.6)	
Normal, No. (%) of VFs							
AE	0	915 (30.5)	219 (51.9)	191 (49.1)	133 (50.6)	115 (49.4)	
FE	115 (25.3)	981 (56.7)	252 (60.1)	238 (60.9)	174 (65.7)	152 (64.4)	

Abbreviations: AE, affected eye; FE, fellow eye; NLP, no light perception; VF, visual field.

eTable 3. Association of VF Classifications With Mean MD and Mean PSD in the Affected Eye

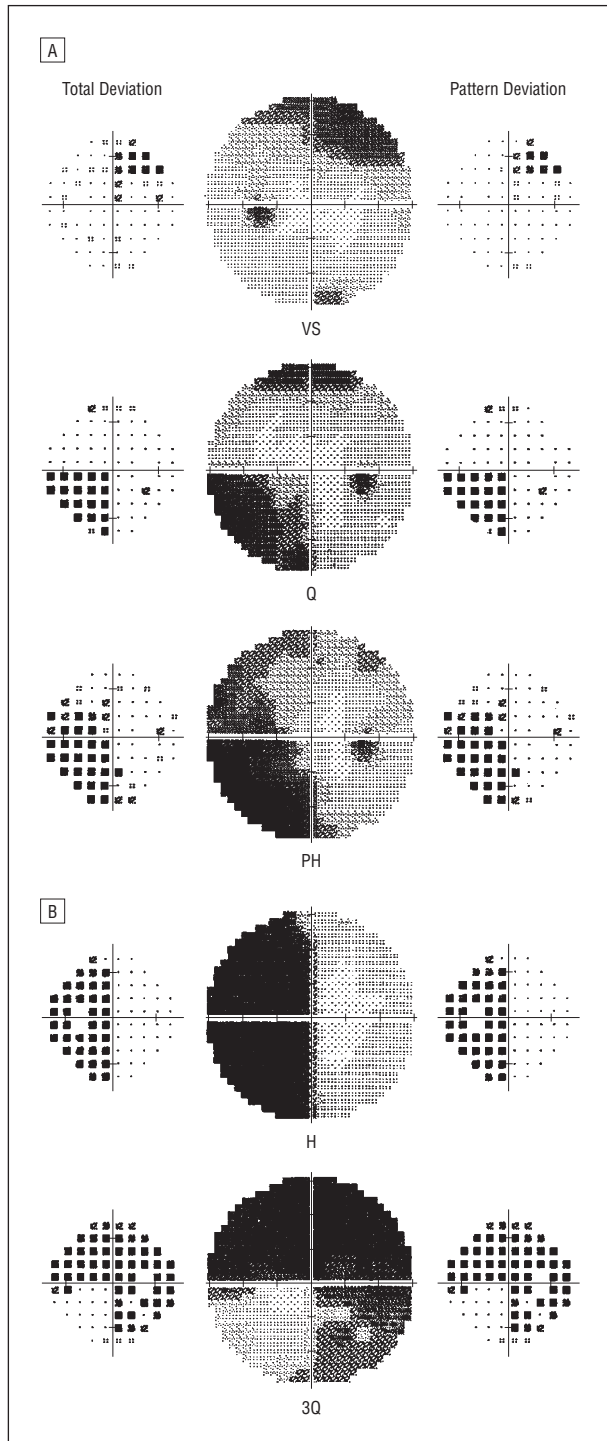
Classification	No. of VFs (n=3664)	MD, Mean (25th-75th Percentile)	No. of VFs (n=247)	Mean PSD
Total loss	488	-27.87 (-32.27 to -24.05)	15	8.33
Three quadrants	10	-18.08 (-20.07 to -16.85)	0	...
Peripheral rim	4	-17.28 (-17.86 to -16.71)	0	...
Altitudinal	86	-16.49 (-18.91 to -14.84)	1	9.44
Central	541	-14.13 (-24.85 to -4.35)	11	3.98
Hemianopia	17	-12.27 (-15.47 to -10.53)	0	...
Quadrant	40	-7.64 (-9.57 to -5.97)	4	9.79
Arcuate	436	-10.36 (12.94 to -7.45)	29	7.10
Partial hemianopia	23	-10.11 (-13.16 to -6.84)	1	10.81
Centrocecal	45	-6.77 (-8.56 to -3.64)	4	7.33
Partial arcuate	519	-4.92 (-6.01 to -3.59)	51	3.84
Widespread	259	-4.36 (-5.14 to -3.38)	16	2.27
Vertical step	87	-3.78 (-4.79 to -2.45)	6	5.88
Partial peripheral rim	54	-3.23 (-3.61 to -2.34)	7	6.39
Multiple foci	133	-2.88 (-3.64 to -2.38)	11	3.70
Nasal step	67	-2.34 (-2.99 to -1.26)	6	4.65
Superior depression	17	-2.33 (-3.39 to -1.27)	1	3.66
Enlarged blind spot	77	-2.23 (-2.84 to -1.42)	9	2.67
Temporal wedge	44	-1.93 (-2.83 to -1.30)	3	5.78
Paracentral	712	-1.81 (-2.53 to -1.26)	72	2.72
Inferior depression	5	-1.35 (-2.06 to -0.56)	0	...

Abbreviations: ellipses, data not available; MD, mean deviation; PSD, pattern standard deviation; VF, visual field.

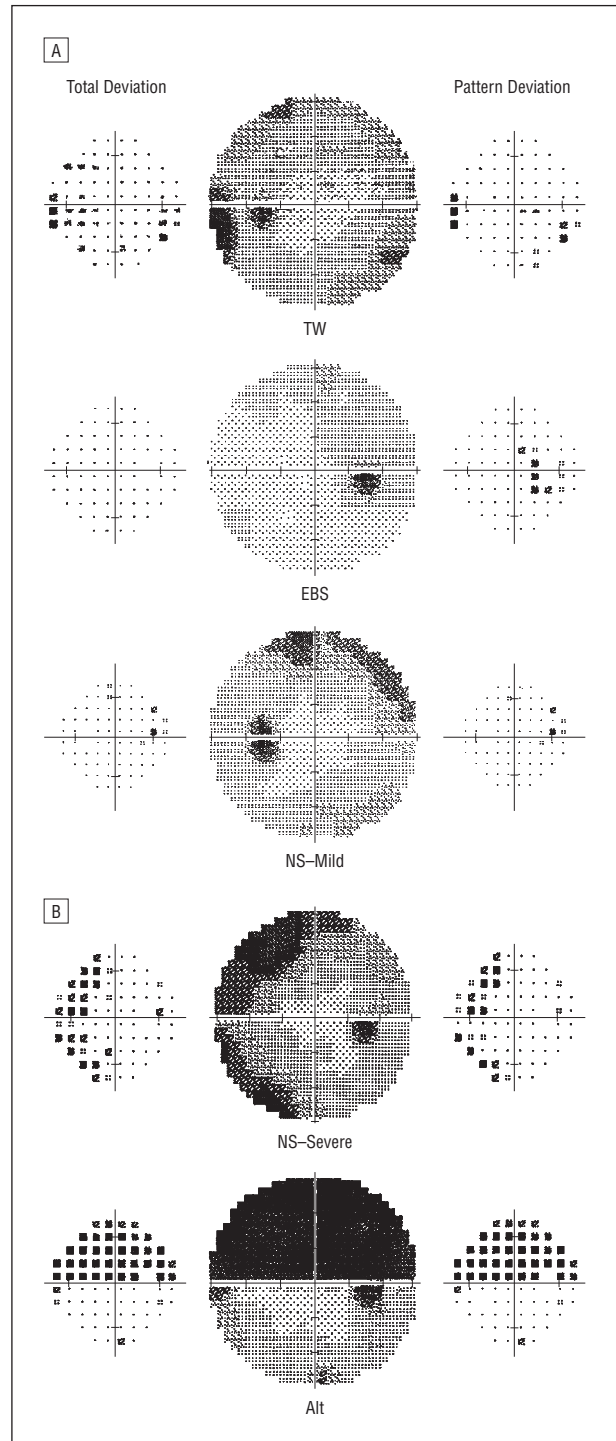
eTable 4. Association of VF Classifications With Mean MD and Mean PSD in the Fellow Eye

Classification	No. of VFs (n=1916)	MD, Mean (25th to 75th Percentile)	No. of VFs (n=176)	Mean PSD
Total loss	21	-27.13 (-31.25 to -24.65)	7	7.52
Peripheral rim	14	-11.59 (-15.88 to -7.53)	1	12.94
Altitudinal	4	-10.70 (-19.16 to -2.24)	0	...
Arcuate	163	-9.67 (-11.37 to -7.29)	19	7.08
Centrocecal	4	-8.93 (-13.45 to -4.41)	0	...
Three quadrants	1	-8.41 (-8.41 to -8.41)	0	...
Central	26	-8.30 (-13.94 to -3.24)	2	6.46
Quadrant	13	-6.16 (-7.20 to -4.47)	2	10.69
Partial hemianopia	5	-4.88 (-7.05 to -3.03)	0	...
Hemianopia	4	-4.69 (-5.99 to -3.39)	3	6.31
Partial arcuate	395	-4.39 (-5.39 to -3.43)	37	4.38
Widespread	145	-4.27 (-4.70 to -3.37)	14	2.30
Partial peripheral rim	64	-2.88 (-3.96 to -1.60)	8	6.41
Multiple foci	144	-2.72 (-3.50 to -2.07)	6	3.53
Vertical step	44	-2.44 (-3.39 to -1.75)	4	3.71
Nasal step	124	-2.02 (-2.83 to -1.26)	11	3.47
Paracentral	663	-1.52 (-2.44 to -0.74)	54	2.72
Superior depression	11	-1.40 (-2.35 to -0.11)	1	2.36
Inferior depression	13	-1.37 (-2.27 to -0.59)	2	3.81
Temporal wedge	33	-0.95 (-1.80 to -0.34)	1	3.41
Enlarged blind spot	25	-0.86 (-2.38 to 0.82)	4	2.71

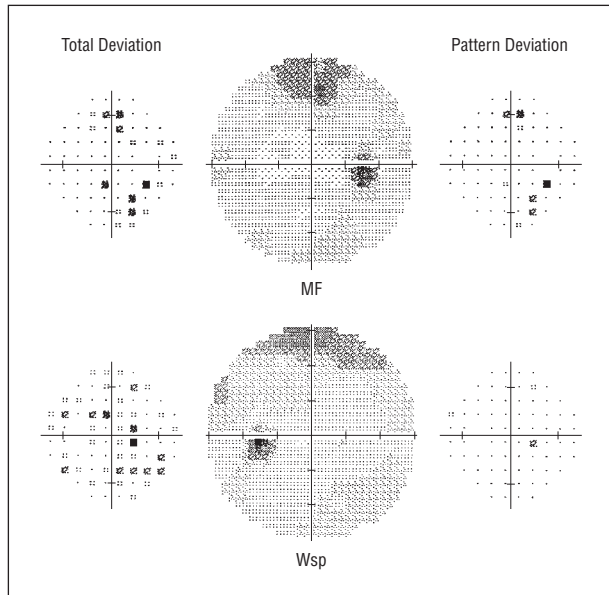
Abbreviations: ellipses, data not available; MD, mean deviation; PSD, pattern standard deviation; VF, visual field.



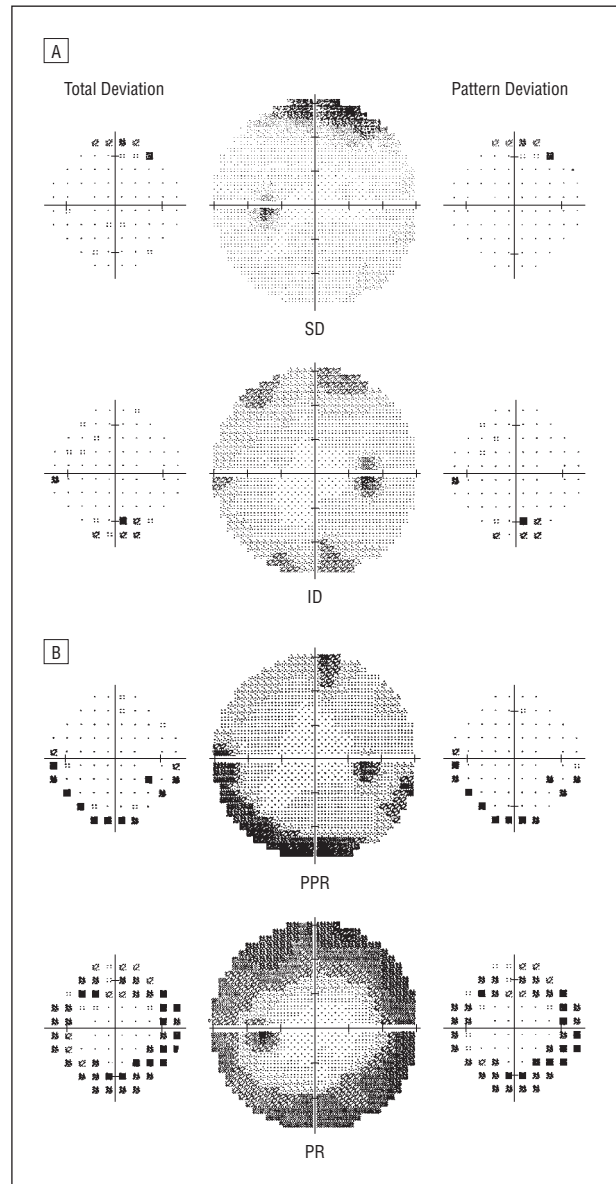
eFigure 1. Neurological visual field abnormality classifications. A, Vertical step (VS), quadrant (Q), and partial hemianopia (PH). B, Hemianopia (H) and 3 quadrants (3Q).



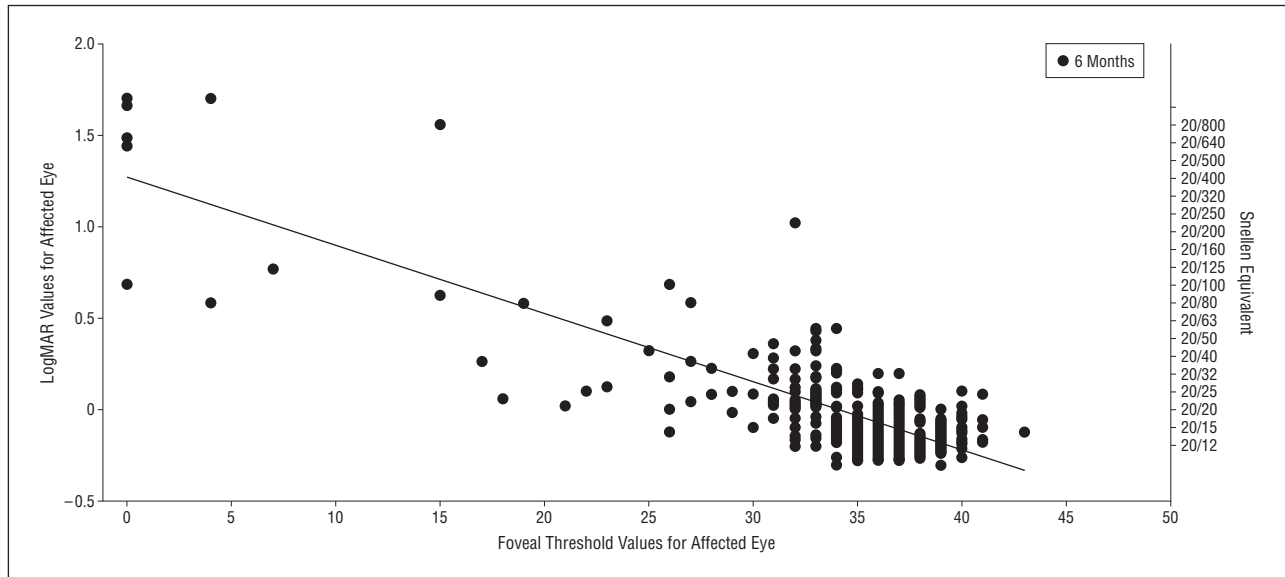
eFigure 2. Optic nerve visual field nerve fiber bundle abnormality classifications. A, Temporal wedge (TW), enlarged blind spot (EBS), nasal step—mild (NS—Mild). B, Nasal step—severe (NS—Severe) and altitudinal (Alt).



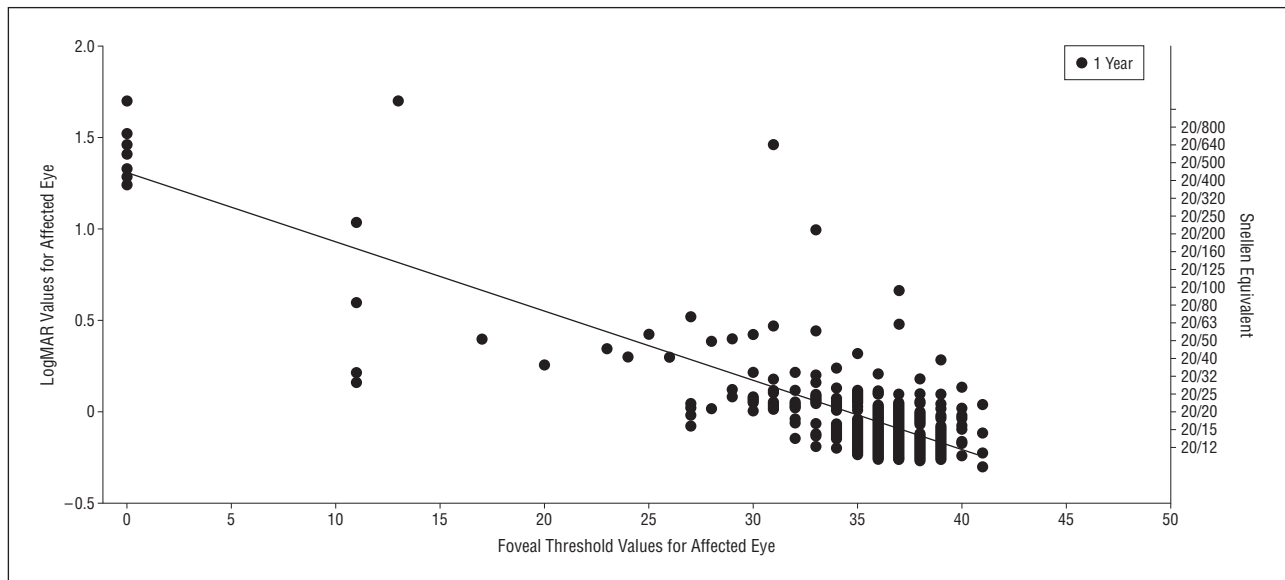
eFigure 3. Optic nerve visual field abnormality classifications. Diffuse abnormalities: multiple foci (MF) and widespread (Wsp).



eFigure 4. Artifactual visual field abnormality classifications. A, Superior depression (SD) and inferior depression (ID). B, Partial peripheral rim (PPR) and peripheral rim (PR).



eFigure 5. Foveal threshold vs Snellen and logMAR (logarithm of the minimum angle of resolution) visual acuity and contrast sensitivity in the affected eye at 6 months. Pearson correlation for foveal threshold and logMAR values, $r = -0.84$; and for foveal threshold and contrast sensitivity, $r = 0.81$.



eFigure 6. Foveal threshold vs Snellen and logMAR (logarithm of the minimum angle of resolution) visual acuity and contrast sensitivity in the affected eye at 1 year. Pearson correlation for foveal threshold and logMAR values, $r = -0.84$; and for foveal threshold and contrast sensitivity, $r = 0.79$.